

Sure-Feed Engineering Inc.

PLACER

CD HOPPER

Operation & Parts Manual



SURE-FEED ENGINEERING

12050 49th STREET NORTH - CLEARWATER, FL. 33762-4301
PHONE: 727.571.3330 - FAX: 727.571.3443 - TOLL FREE: 1.800.INSERTER
web: sure-feed.com

PLACER

OWNERS MANUAL

Table of Contents

- 1. Installation guide**
- 2. Set-up/operation instructions**
- 3. Cleaning**
- 4. Troubleshooting**
- 5. Parts manual**
- 6. Electrical schematic**
- 7. Not available**

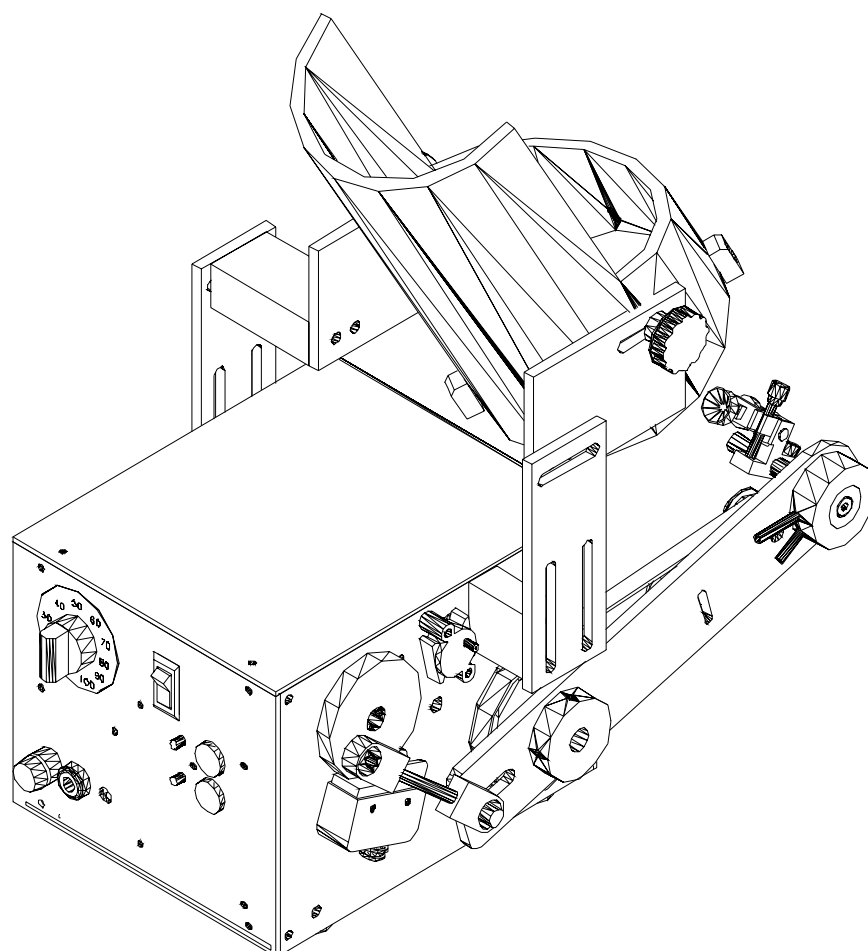
INSTALLATION OF SURE-FEED PLACER

Sure-Feed Engineering Inc.
Set-up / Operation Instructions

1. Locate the 1/4-20 knobs (Fig. 5-6, #8) on the placer hopper and loosen them.
2. Slide the CD hopper all the way back to the end of the slots on the hopper mounting bracket (5-6, #4) then tighten the knobs.
3. Locate the speed dial on the back of the Placer (5-7, #20) and turn it counter clockwise all the way to 0.
4. Turn the power on (Fig. 5-7, #7). Press the red button on the back of the Placer (Fig. 5-7, #14), and then press the green button. When you hear a click it means the clutch is disengaged. Locate the actuating disk (Fig. 5-4, #5) on the right hand side of the Placer with the red and green button facing you. Rotate the actuating disk by hand clockwise. The picker arm (Figure 5-5, #2) will start to move downward, reach the bottom point, and then begin to move back up toward the hopper. When it reaches a position 2" away from the hopper, stop. This is its home position. The action of turning the actuating disk as discussed in this procedure is called "jogging".
5. Press the green button on the back of the Placer, jog the placer until the picker arm reaches its highest point, and then turn the power off.
6. Place one test Cd from the job you are running into the hopper (Figure 5-6).
7. Loosen the 1/4-20 knobs on the hopper, and adjust the hopper forward until the CD in the hopper touches the suction cup (Fig. 5-5, #16).

8. Place the test CD in the hopper and line the suction cup directly to the center of it under the hole.
9. Adjust the hopper so that the angle of the CD matches the angle of the suction cup perfectly.
10. Tighten the 1/4-20 knobs. Make sure the hopper does not move as you do this
11. Turn the power back on and make sure the speed dial is on 0. Push the green button and jog the picker arm. Let it move downward then up until the suction cup kisses the CD. Make sure the angle of the suction cup is the same as the angle of the test CD. You can adjust the depth of the suction cup with the thumb dial on the suction cup assembly (Fig. 5-5, #15).
12. Turn the speed knob clockwise to 45 on the speed dial and then push the green button. Make sure the picker arm is not hitting the hopper in its up stroke.

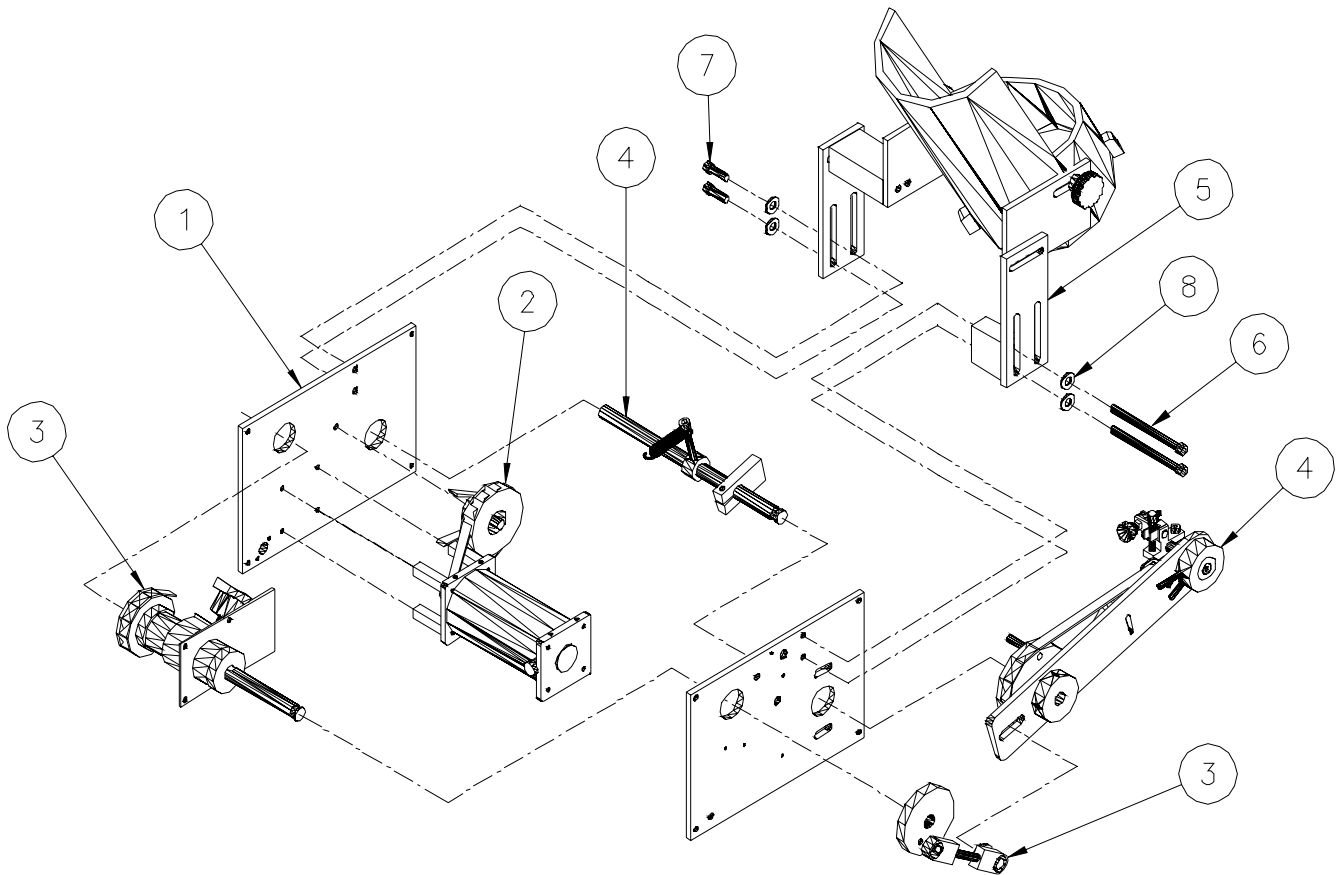
Sure-Feed Engineering Inc.
PLACER Parts Manual



PLACER ASSEMBLY (Fig. 5-1)

ITEM	PART NO.	QTY.	DESCRIPTION
1	SEE FIG. 5-2	1	CHASSIS ASSEMBLY
2	SEE FIG. 5-3	1	MOTOR ASSEMBLY
3	SEE FIG. 5-4	1	CLUTCH ASSEMBLY
4	SEE FIG. 5-5	1	ARM ASSEMBLY
5	SEE FIG. 5-6	1	HOPPER ASSEMBLY (CD)
6		2	SCREW, SKT HD, 1/4-20 X 2-3/4
7		2	SCREW, SKT HD, 1/4-20 X 3/4
8		4	WASHER, FLAT, 1/4
9	SEE FIG. 5-7	1	ELECTRICAL ASSEMBLY (NOT SHOWN)

FIG 5-1

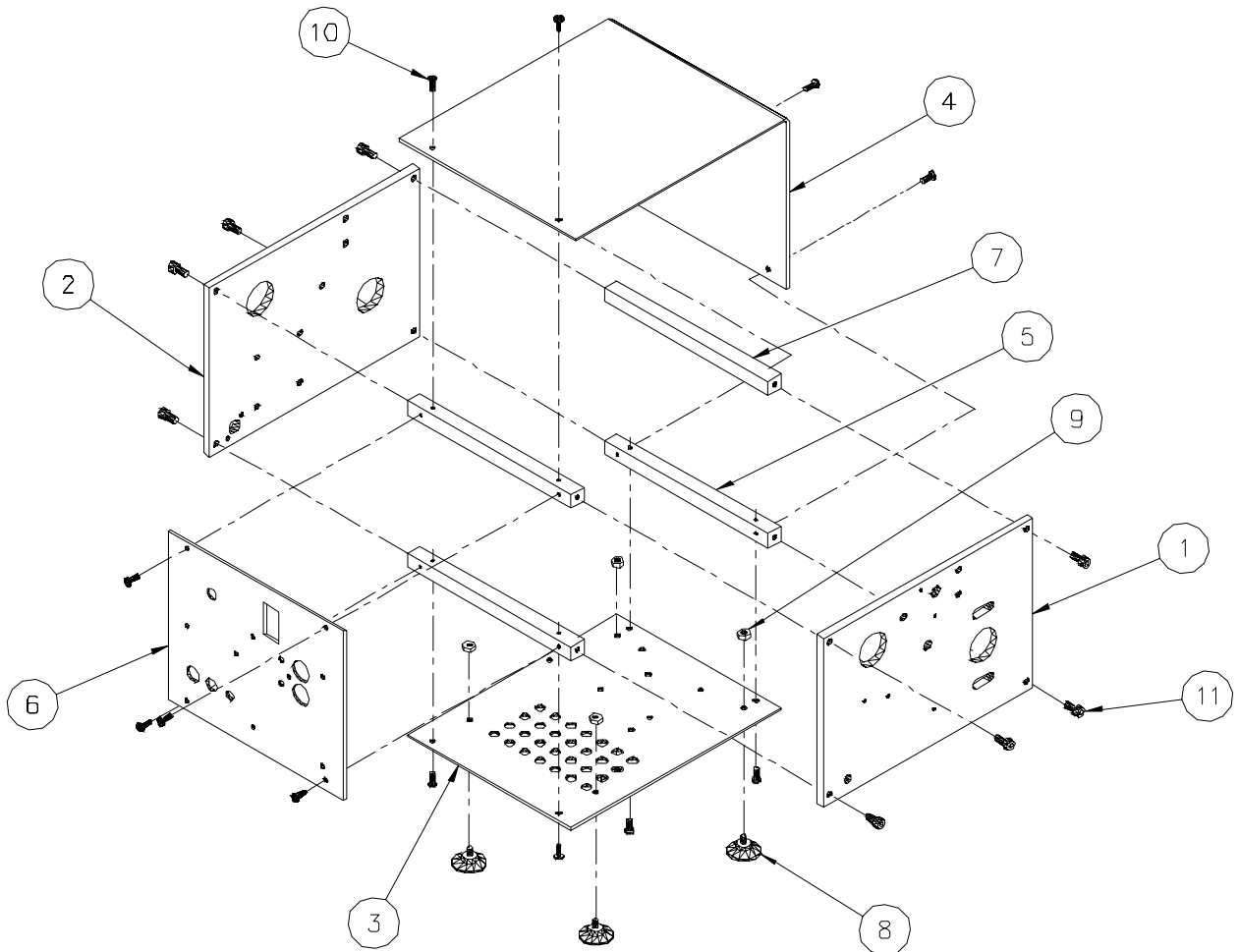


NOTE: ELECTRICAL COMPONENTS ASSEMBLY IS NOT SHOWN (ITEM 9)

CHASSIS ASSEMBLY (Fig. 5-2)

ITEM	PART NO.	QTY.	DESCRIPTION
1	11000-001	1	SIDE FRAME, RH
2	11000-002	1	SIDE FRAME, LH
3	11002-001	1	COVER, BOTTOM
4	11001-001	1	COVER, TOP
5	11003-005	3	CROSS BAR W/HOLES
6	11001-002	1	COVER, REAR
7	11003-001	1	CROSS BAR
8	99007-001	4	SUCTION CUP, FOOT.
9		4	NUT, HEX, 8-32
10		12	SCREW, PAN HD, 6-32 X 3/8
11		8	SCREW, SOCKET HD, 10-24 X 3/8

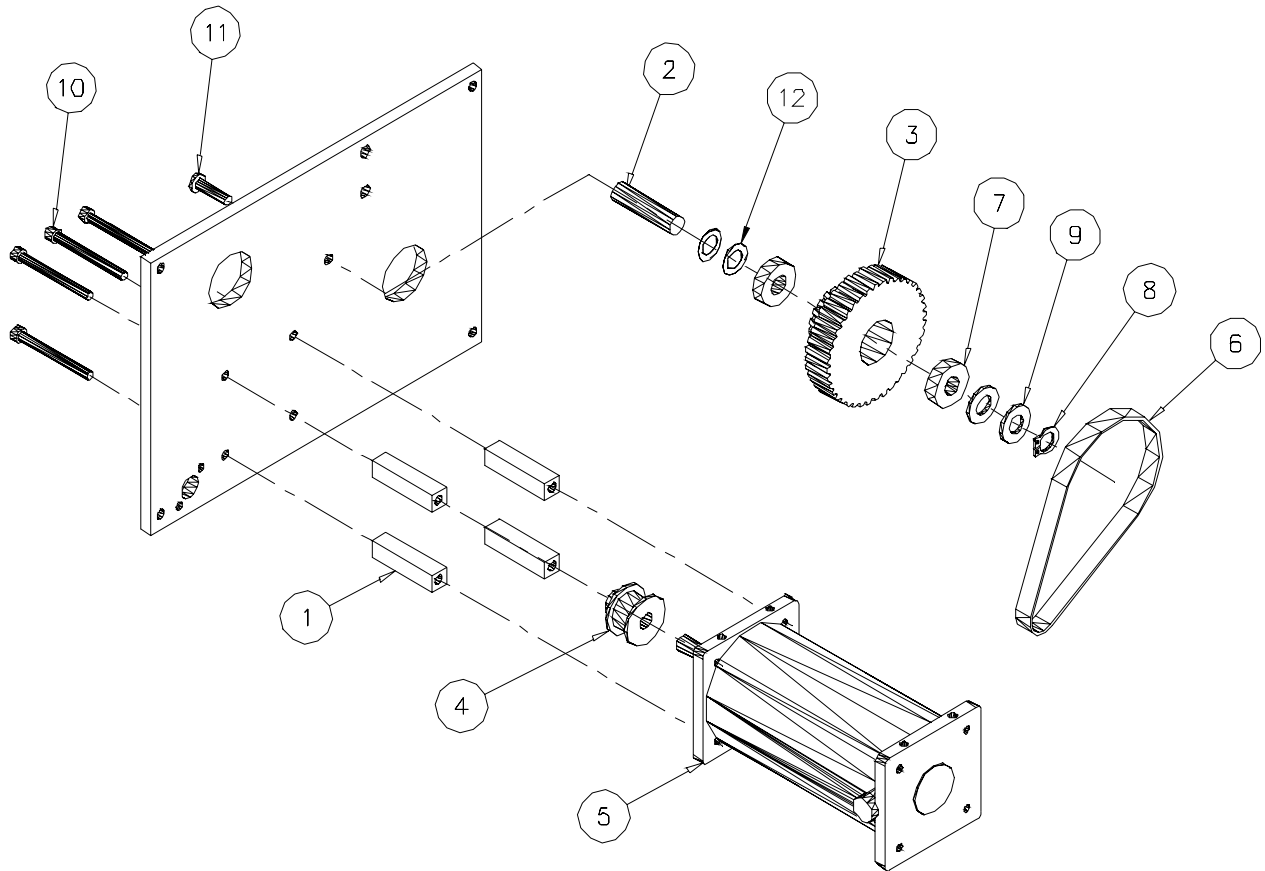
FIG 5-2



MOTOR ASSEMBLY (Fig. 5-3)

ITEM	PART NO.	QTY.	DESCRIPTION
1	11012-004	4	STANDOFF, MOTOR
2	11004-008	1	SHAFT, IDLER 1 1/2
3	13006-002	1	PULLEY, DOUBLE IDLER, 40/20XL
4	99002-008	1	PULLEY, 12XL037, 5/16" B (W/HUB)
5	99001-003	1	MOTOR, 4Z142
6	99000-002	1	BELT, TIMING, 110XL037
7	99003-008	2	BEARING, 3/8 ID X 7/8 OD SEALED
8	99022-003	1	SNAP RING, 3/8
9	99003-017	2	WASHER, NYLON, 3/8 X 1/16
10		4	SCREW, SOCKET HD, 8-32 X 2
11		1	SCREW, SOCKET HD, 10-24 X 3/4
12	99036-005	2	SHIM, ARBOR, 3/8 X 5/8 X .006

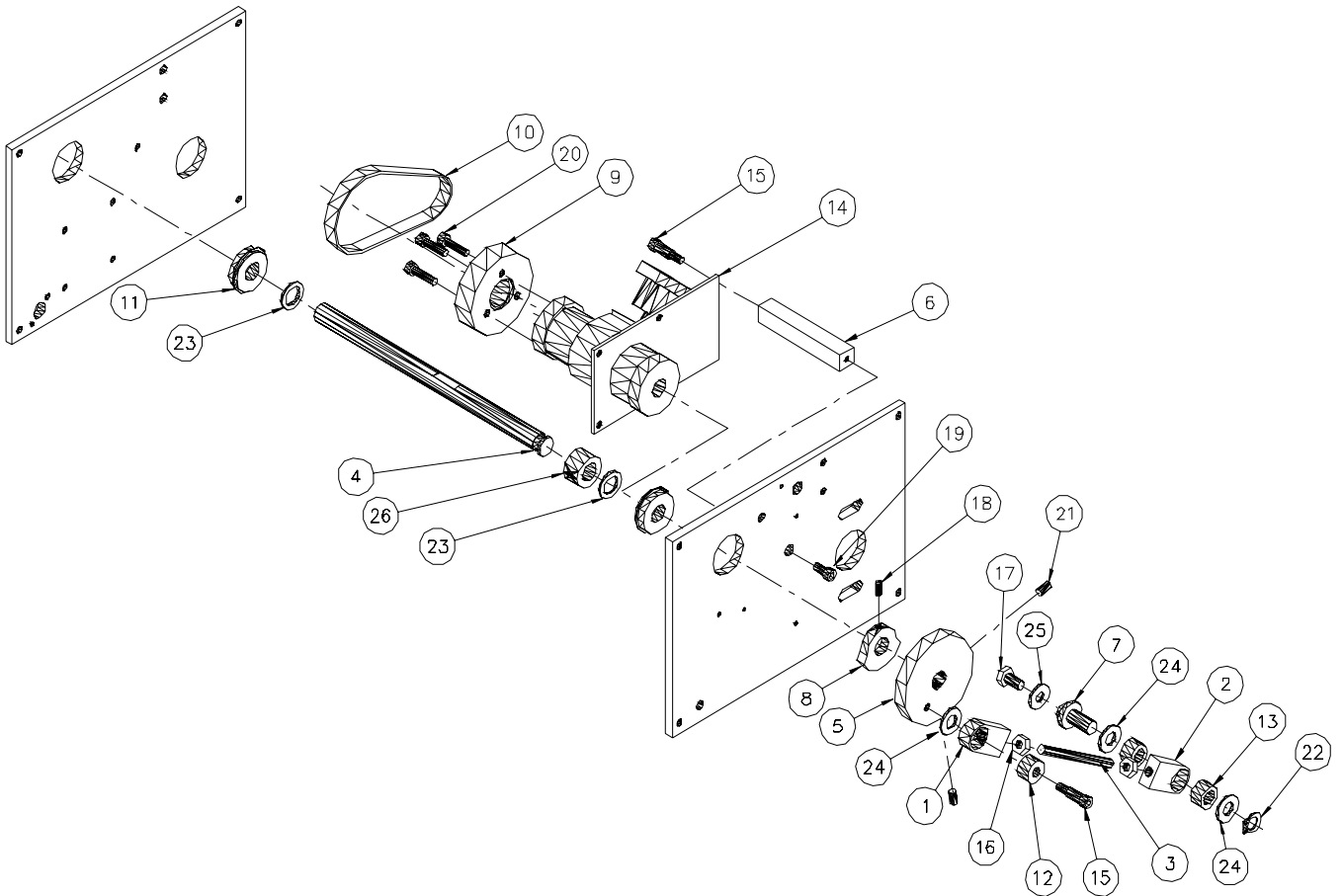
FIG 5-3



CLUTCH ASSEMBLY (Fig. 5-4)

ITEM	PART NO.	QTY.	DESCRIPTION
1	11015-003	1	ROD END, 1/4
2	11015-002	1	ROD END, 5/8
3	11004-003	1	ROD, THD, 1/4-28 X 3
4	11004-004	1	SHAFT, CLUTCH
5	11006-004	1	DISK, ACTUATING
6	11012-001	1	STANDOFF, CLUTCH STOP
7	11004-006	1	STUD, ACTUATING
8	11006-008	1	CAM, VACUUM SWITCH
9	11006-009	1	PULLEY, CLUTCH, 36XL
10	99000-002	1	BELT, TIMING, 110XL037
11	99003-007	2	BEARING, 1/2 ID X 1 1/8 OD, SEALED W/SNAP RING
12	99003-002	2	BEARING, 1/4 ID X 5/8 OD, SEALED
13	99003-008	2	BEARING, 3/8 ID X 7/8 OD, SEALED
14	99008-004	1	CLUTCH/BRAKE
15	99033-007	2	BOLT, SHOULDER, 1/4 X 1/2
16		2	NUT, HEX, 1/4-28
17		1	BOLT, HEX, 1/4-20 X 1/2
18		1	SCREW, SET, 8-32 X 1/4
19		1	SCREW, SOCKET HD, 10-24 X 3/8
20		3	SCREW, SOCKET HD, 10-32 X 3/4
21		2	SCREW, SET, 10-24 X 1/4
22	99022-003	1	SNAP RING, 3/8
23	99003-018	3	WASHER, NYLON, 1/2 X 1/16
24	99022-017	4	WASHER, NLYON, 3/8 X 1/16
25		1	WASHER, FLAT, 1/4
26	99017-004	1	COLLAR, SET, 1/2

FIG. 5-4



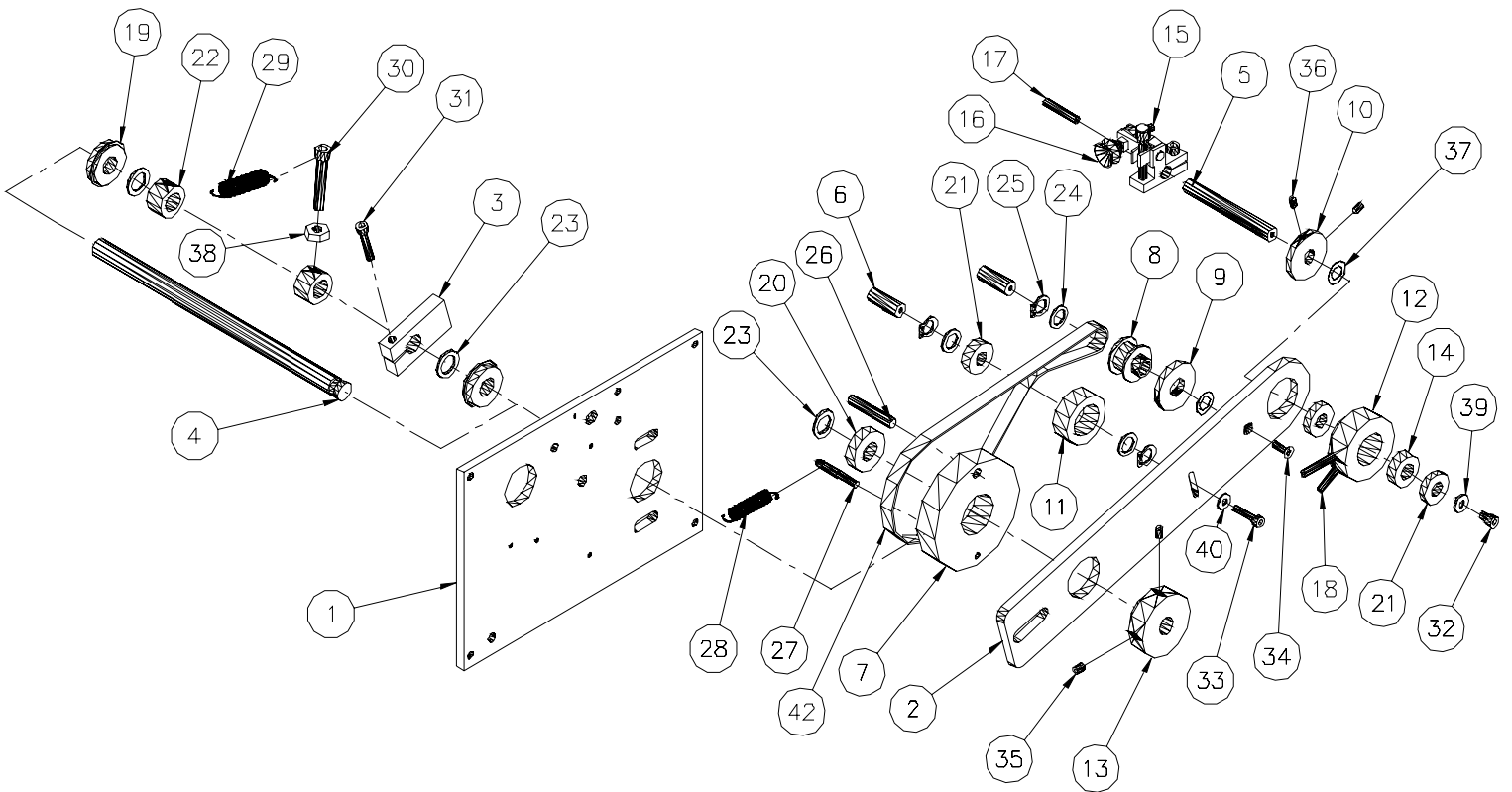
ARM ASSEMBLY (Fig. 5-5)

ITEM	PART NO.	QTY.	DESCRIPTION
1	11000-001	1	SIDE FRAME, RH (REF. FIG. 5-2)
2	11008-001	1	ARM, PICKER
3	11015-001	1	LINK, ARM
4	11004-001	1	SHAFT, MAIN
5	11004-005	1	SHAFT, VACUUM MANIFOLD
6	11004-007	2	SHAFT, IDLER, 1 1/8 LONG
7	11006-005	1	PULLEY, 48XL037
8	11006-003	1	PULLEY, SPUR GEAR
9	11006-011	1	SPUR GEAR, .4844 DIA
10	11006-001	1	SPUR GEAR, .375 DIA
11	11006-006	1	PULLEY, IDLER
12	11007-001	1	BLOCK, ROTARY MANIFOLD
13	11006-007	1	COLLAR, ARM
14	11006-002	2	SPACER, VACUUM MANIFOLD
15	99007-002	1	SUCKER CUP ASSY, ADJ
16	99007-003	1	SUCKER CUP
17	11004-010	1	TUBE, VACUUM, 1 1/8
18	11004-009	2	TUBE, VACUUM, 1 1/2
19	99003-007	2	BEARING, 1/2 X 1 1/8 OD, SEALED W/SNAP RING
20	99003-003	1	BEARING, 1/2 X 1-1/8, SEALED
21	99003-008	3	BEARING, 3/8 X 7/8, SEALED
22	99017-004	2	COLLAR, SET, 1/2
23	99003-018	2	WASHER, NYLON, 1/2 X 1/16
24	99003-017	3	WASHER, NYLON, 3/8 X 1/16
25	99022-003	3	SNAP RING, 3/8
26	99006-022	1	PIN, DOWEL, 1/41 1/2
27	11004-002	1	STUD, SPRING CLIP
28	99005-023	1	SPRING, EXPANSION
29	99005-022	1	SPRING, EXPANSION

ARM ASSEMBLY (CONT') (Fig. 5-5)

ITEM	PART NO.	QTY.	DESCRIPTION
30		1	SCREW, SOCKET, HD, 1/4-28 X 1 1/2
31		1	SCREW, SOCKET HD, 10-24 X 1
32		1	SCREW, SOCKET HD, 10-32 X 1/4
33		1	SCREW, SOCKET HD, 8-32 X 3/4
34		1	SCREW, FLAT HD, 8-32 X 1/2
35		2	SCREW, SET, 10-24 X 1/4
36		2	SCREW, SET, 8-32 X 1/4
37	99036-005	2	SHIM, ARBOR, 3/8 X 5/8 X .006
38		1	NUT, HEX, 1/4-28
39		1	WASHER, FLAT, #10
40		1	WASHER, FLAT, #8
41	99031-005	4'	TUBING, 1/8 ID X 1/4 OD (NOT SHOWN)
42	99000-017	1	BELT, TIMING, 190XL037

FIG. 5-5

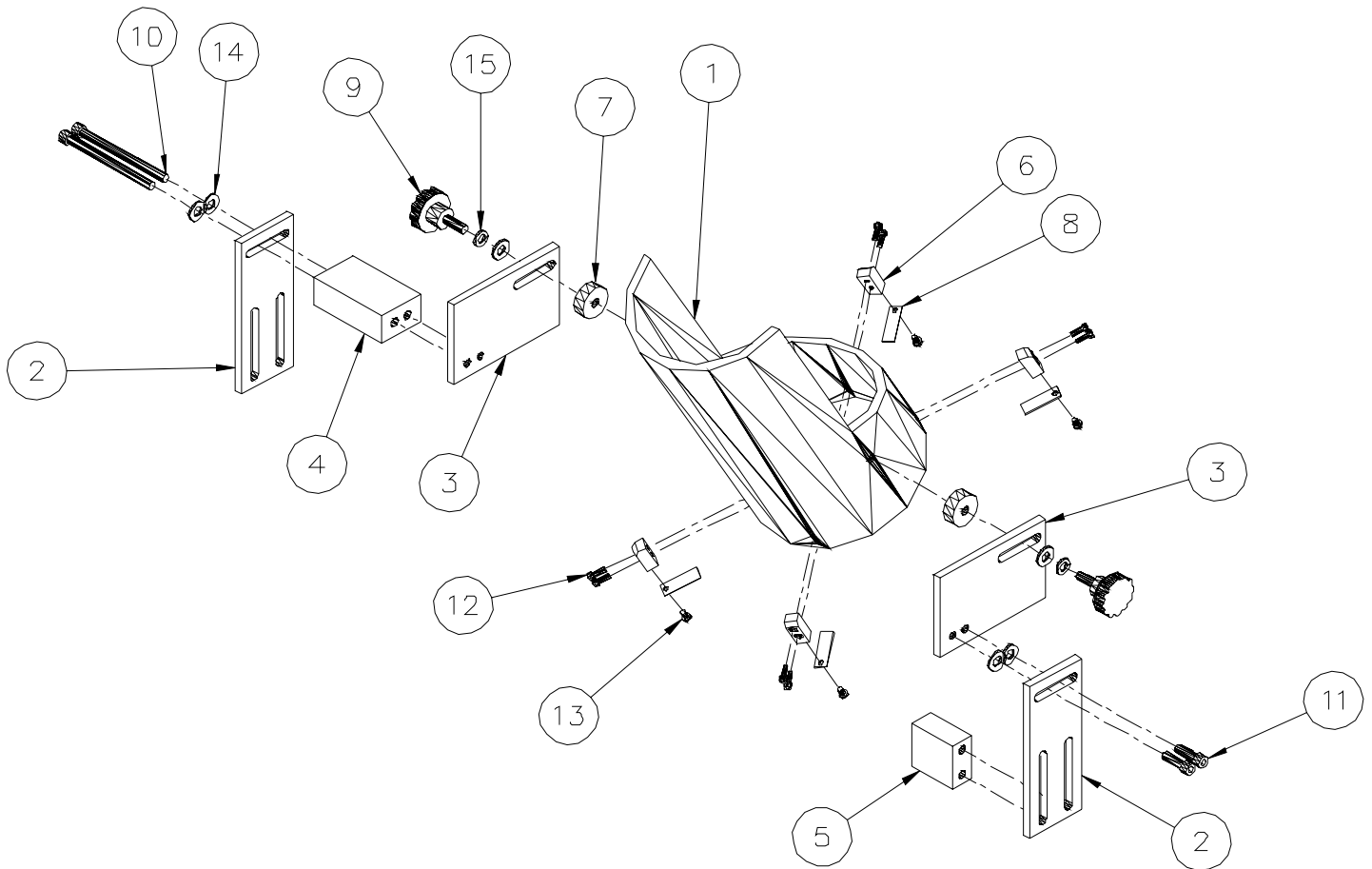


NOTE: TUBING (ITEM 41) NOT SHOWN

HOPPER ASSEMBLY (CD) (Fig. 5-6)

ITEM	PART NO.	QTY.	DESCRIPTION
1	11005-007	1	HOPPER, CD
2	11011-003	2	PLATE, HOPPER MTG. (TALL)
3	11011-005	2	PLATE, CD HOPPER MTG.
4	11012-003	1	BLOCK, HOPPER MTG. (LONG)
5	11012-002	1	BLOCK, HOPPER MTG. (STD)
6	11007-005	4	BLOCK, TAB MTG, CD HOPPER
7	11012-005	2	SPACER, CH HOPPER
8	99039-005	4	TAB, CD HOPPER
9	99004-004	2	KNOB, 1/4-20
10		2	SCREW, SKT HD, 1/4-20 X 3-1/2
11		2	SCREW, SKT HD, 1/4-20 X 3/4
12		8	SCREW, SKT HD, 6-32 X 3/8
13		4	SCREW, PAN HD, 6-32 X 1/4
14		4	WASHER, FLAT, 1/4
15		2	WASHER, LOCK, 1/4

FIG. 5-6

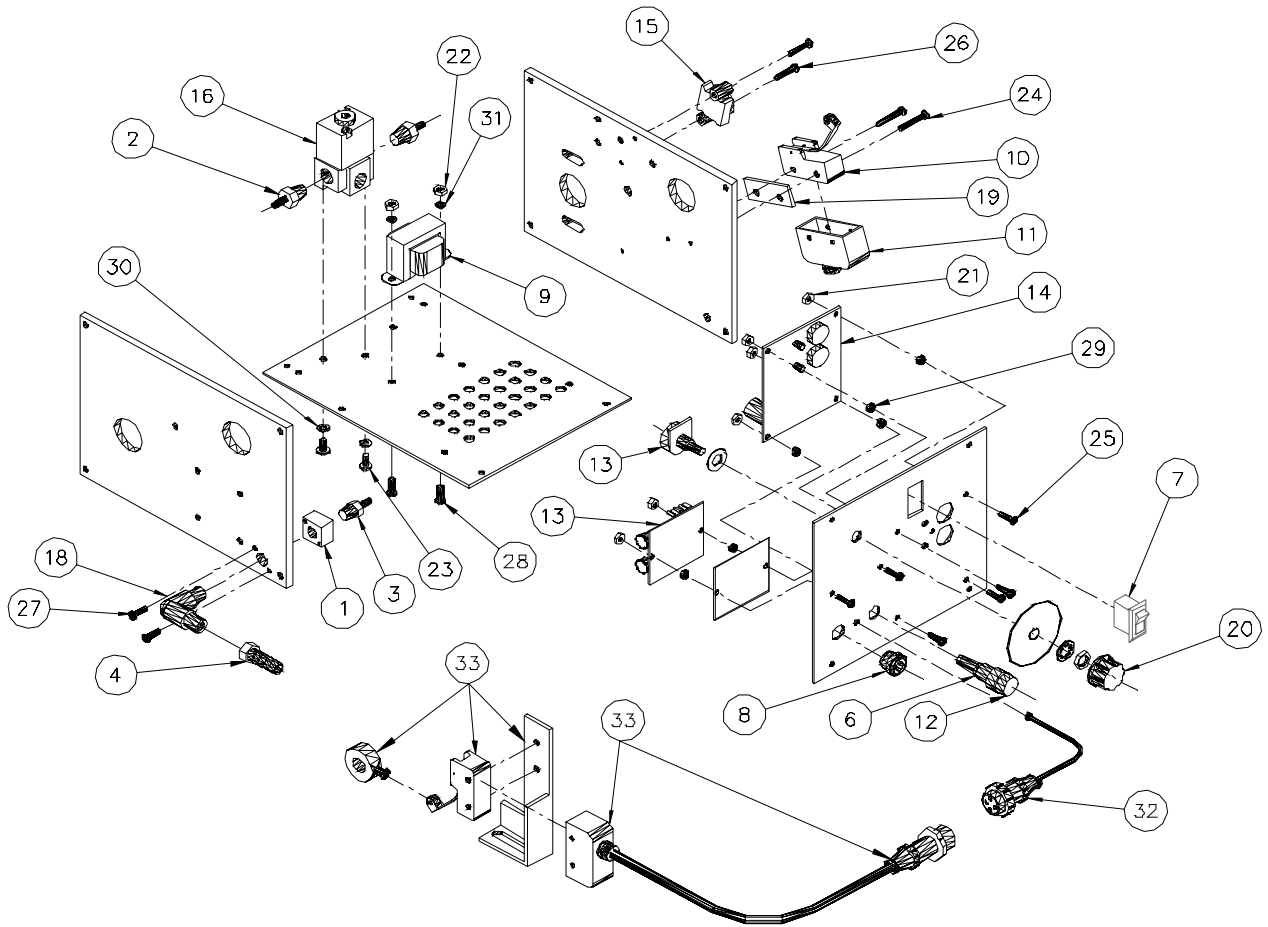


ELECTRICAL/VACUUM ASSEMBLY (Fig. 5-7)

ITEM	PART NO.	QTY.	DESCRIPTION
1	11007-007	1	MANIFOLD, AIR
2	99028-062	2	BARB, HOSE, 1/4 NPT X 1/8 T
3	99028-042	1	BARB, HOSE, 1/8 NPT X 1/8 T
4	99028-076	1	BARB, HOSE, 1/4 NPT (FEMALE) X 3/8T
5	98007-001	1	CORD, POWER (NOT SHOWN)
6	98004-010	1	HOLDER, FUSE
7	98000-001	1	SWITCH, ON/OFF
8	98015-008	1	STRAIN RELIEF, 5/16 (FOR POWER CORD)
9	98008-001	1	TRANSFORMER
10	98000-020	1	SWITCH, LIMIT W/ ROLLER
11	98000-021	1	COVER, LIMIT SWITCH
12	98004-007	1	FUSE, 3.15 AMP
13	98005-001	1	CONTROLLER, MOTOR, 90V DC
14	98006-011	1	CIRCUIT BOARD, OPERATE/RESET
15	98009-012	1	SENSOR, PRESSURE, VACUUM
16	99025-013	1	VALVE, SOLENOID
17	99031-005	4'	TUBING, CLEAR VYNYL, 1/4OD X 1/8 ID (NOT SHOWN)
18	99028-075	1	FITTING, MALE ELBOW, 1/4 NPT X 1/4 NPT (BRASS)
19	99036-006	1	SPACER, LIMIT SWITCH
20	99004-015	1	KNOB, SPEED POT
21		7	NUT, HEX, 6-32
22		2	NUT, HEX, 8-32
23		2	SCREW, PAN HD, 10-32 X 3/8
24		2	SCREW, PAN HD, 6-32 X 1
25		7	SCREW, 6-32 X 1/2
26		2	SCREW, PAN HD, 6-32 X 3/4
27		2	SCREW, PAN HD, 6-32 X 3/8
28		2	SCREW, PAN HD, 8-32 X 1/4
29		7	SPACER, #6 SCREW (CIRCUIT BOARD)
30		2	WASHER, LOCK, #10
31		2	WASHER, LOCK, #8

ITEM	PART NO.	QTY.	DESCRIPTION
32	11016-001	1	TRIGGER CONNCTION ASSEMBLY
	98016-040	1	PLUG, AMP, SERIES 1, 11-4 STD.
	98016-015	1	BACKSHELL, PLASTIC, SIZE 11
33	11016-002	1	TRIGGER SWITCH ASSEMBLY
	98016-058	1	RECEPT, FREE HANGING, AMP SERIES 1, 11-4 STD.
	98016-015	1	BACKSHELL, PLASTIC, SIZE 11
	98000-020	1	SWITCH, TRIGGER W/ ROLLER
	98000-021	1	COVER, TRIGGER SWITCH
	17009-002	1	BRACKET, TRIGGER SWITCH MTG.
	99017-022	1	COLLAR, SLPIT, 1/2 ID (USED AS TRIGGER CAM)

FIG. 5-7



NOTE: POWER CORD (ITEM 5) AND TUBING (ITEM 17) NOT SHOWN

Sure-Feed Engineering Inc.
Placer Electrical Schematic

