



***DIRECT MAIL SOLUTIONS***

***STANDARD  
6' COLLECTING  
CONVEYOR***

***Parts Manual***

12050 49th STREET NORTH - CLEARWATER, FL. 33762-4301  
PHONE: 727.571.3330 - FAX: 727.571.3443 - TOLL FREE: 1.800.INSERTER

***Pitney Bowes***  
***Direct Mail Solutions***

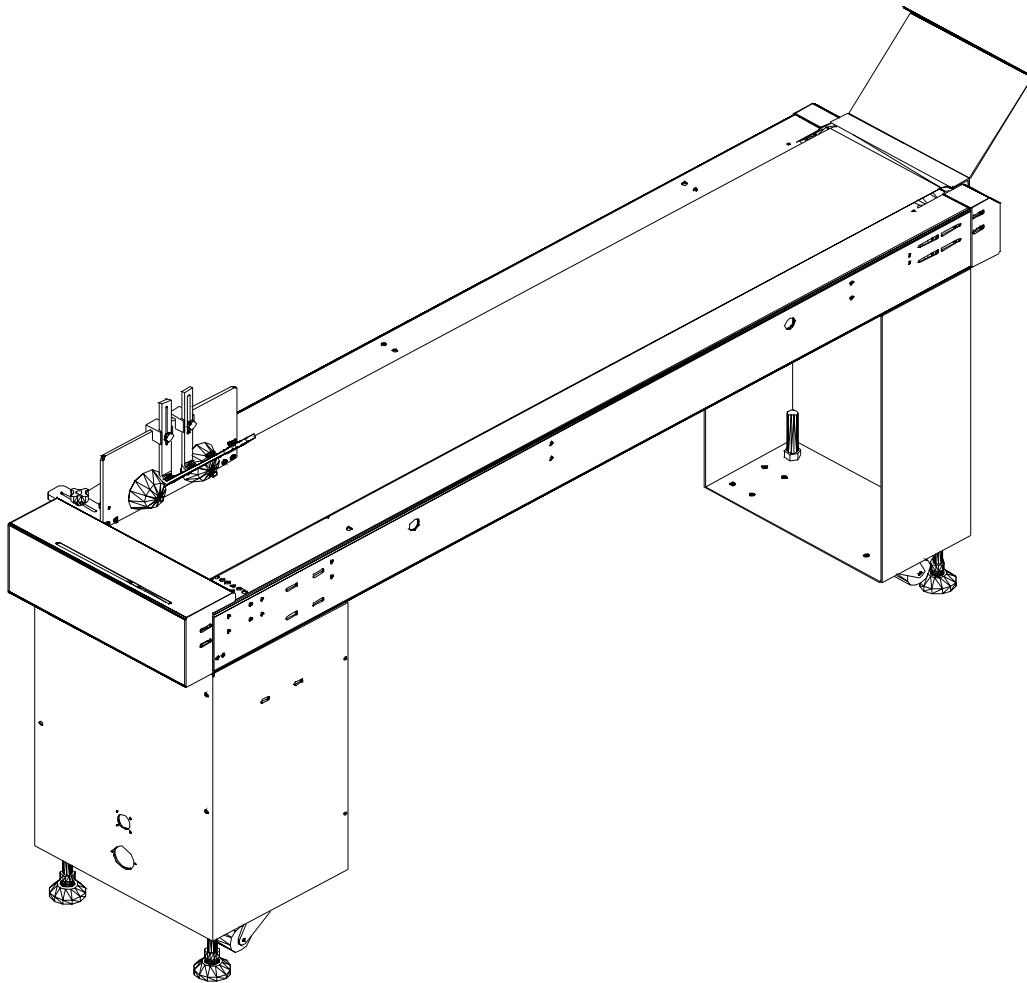
***TABLE OF CONTENTS***

**6' COLLECTING CONVEYOR**

|   |    |
|---|----|
| 6' COLLECTING CONVEYOR ASSEMBLY (Fig. 1)..... | 3  |
| DRIVE ASSEMBLY (Fig. 2).....                  | 5  |
| IDLER ASSEMBLY (Fig. 3) .....                 | 7  |
| KNOCK DOWN ASSEMBLY (Fig. 4) .....            | 9  |
| ELECTRICAL ASSEMBLY (Fig. 5).....             | 11 |

***Pitney Bowes  
Direct Mail Solutions***

## ***6' COLLECTING CONVEYOR***



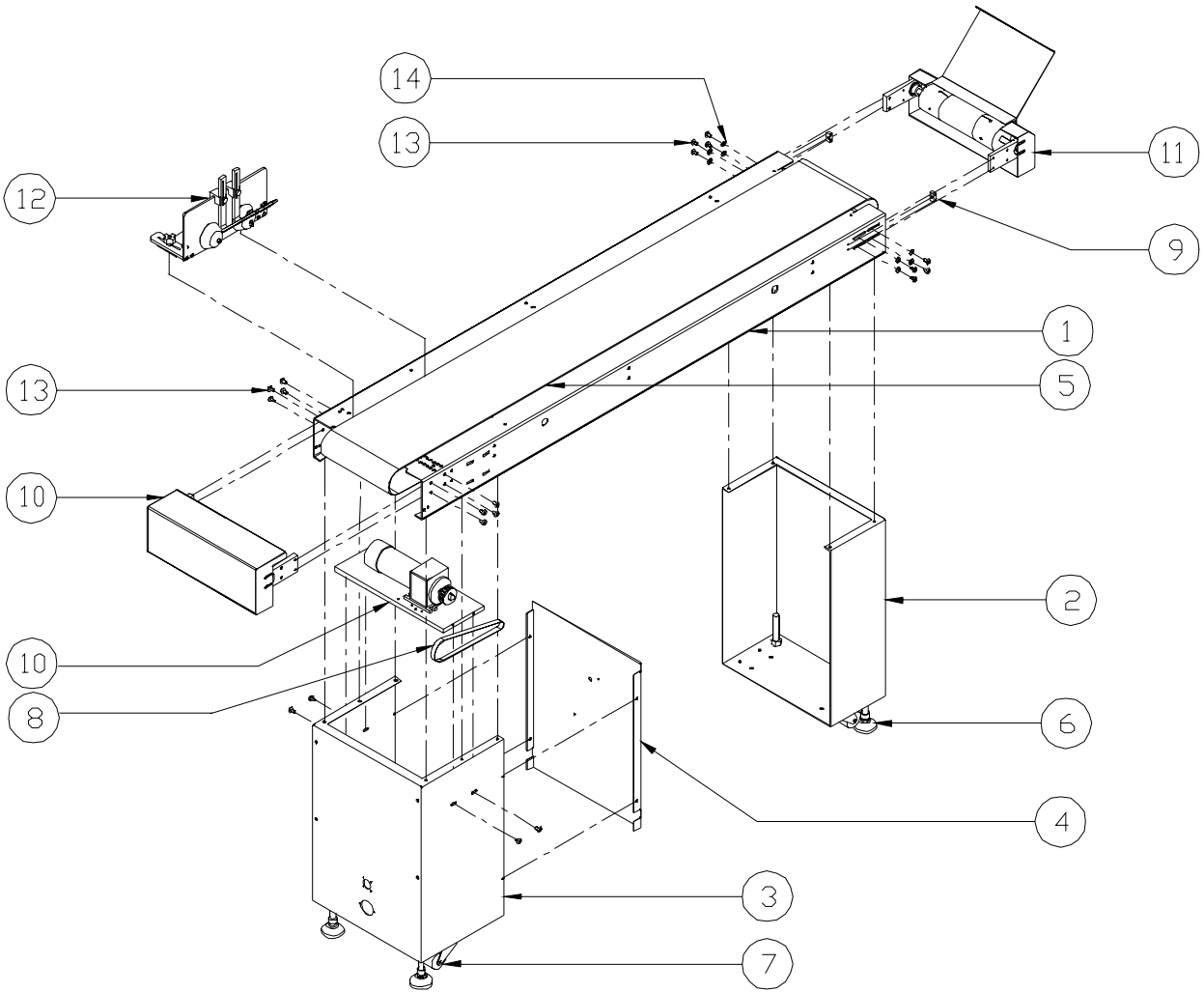
***Pitney Bowes***  
***Direct Mail Solutions***

**6' COLLECTING CONVEYOR ASSEMBLY (Fig. 1)**

| <b>ITEM</b> | <b>PART NO.</b> | <b>QTY.</b> | <b>DESCRIPTION</b>                |
|-------------|-----------------|-------------|-----------------------------------|
| 1           | 12000-014       | 1           | SIDEFRAAME, SHINGLE CONVEYOR      |
| 2           | 12010-003       | 1           | LEG, CONVEYOR IDLER, 30"          |
| 3           | 12010-004       | 1           | LEG, CONVEYOR DRIVE, 30"          |
| 4           | 12013-024       | 1           | GUARD, CONVEYOR DRIVE LEG         |
| 5           | 99000-116       | 1           | BELT, ENDLESS, 10"W X 12'-1" LONG |
| 6           | 99010-001       | 4           | FOOT, ADJUSTABLE, 5/8-11          |
| 7           | 99010-002       | 4           | CASTOR, 2" DIAM., DOUBLE WHEEL    |
| 8           | 99000-063       | 1           | BELT, TIMING, 210L050             |
| 9           | 12007-002       | 2           | BLOCK, BEARING ADJUSTING          |
| 10          | SEE FIG. 2      | 1           | DRIVE ASSEMBLY                    |
| 11          | SEE FIG. 3      | 1           | IDLER ASSEMBLY                    |
| 12          | SEE FIG. 4      | 1           | KNOCK DOWN ASSEMBLY               |
| 13          |                 | 20          | SCREW, BUT HD, 1/4-20 X 1/2       |
| 14          |                 | 8           | WASHER, FLAT, 1/4                 |

# Pitney Bowes Direct Mail Solutions

FIG. 1



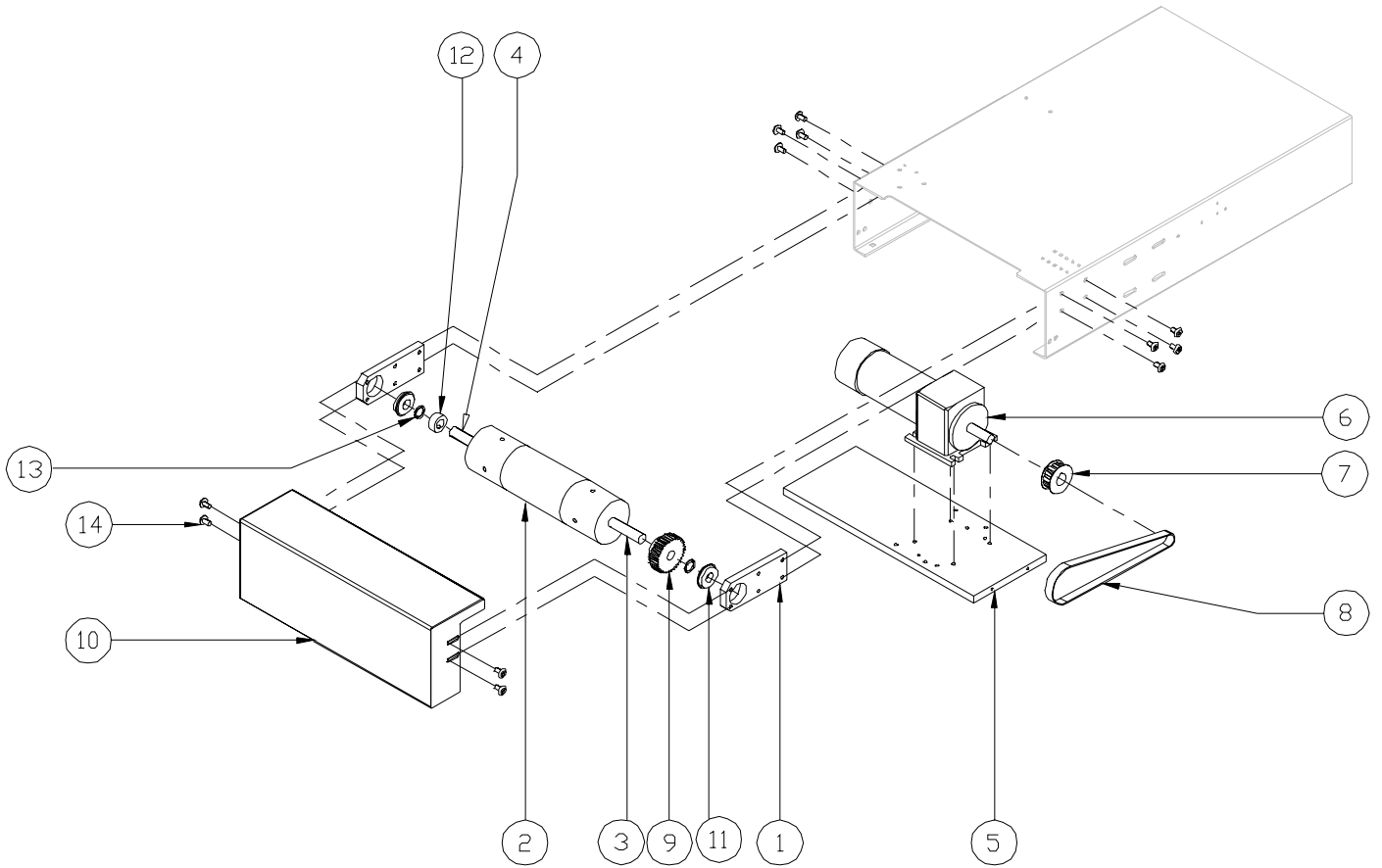
***Pitney Bowes***  
***Direct Mail Solutions***

**6' COLLECTING CONVEYOR (Fig. 2)**  
**DRIVE ASSEMBLY**

| <b>ITEM</b> | <b>PART NO.</b> | <b>QTY.</b> | <b>DESCRIPTION</b>                          |
|-------------|-----------------|-------------|---|
| 1           | 12007-001       | 2           | BLOCK, BEARING                              |
| 2           | 12006-018       | 1           | PULLEY, 10" CROWNED                         |
| 3           | 12004-012       | 1           | SHAFT, STUB DRIVE                           |
| 4           | 12004-013       | 1           | SHAFT, STUB IDLER                           |
| 5           | 12011-005       | 1           | PLATE, MOTOR MTG.                           |
| 6           | 99001-014       | 1           | GEAR MOTOR, 1/8 HP, 167 RPM                 |
| 7           | 99002-041       | 1           | PULLEY, 14L050, 5/8 BORE                    |
| 8           | 99000-063       | 1           | BELT, TIMING, 210L050                       |
| 9           | 99002-047       | 1           | PULLEY, 20L050, 5/8 BORE                    |
| 10          | 12011-006       | 1           | ENC CAP, DRIVE END                          |
| 11          | 99003-006       | 2           | BEARING, SEALED, 5/8 X 1-3/8 (W/ SNAP RING) |
| 12          | 99017-029       | 1           | COLLAR, CALMP ON, 5/8                       |
| 13          | 99003-021       | 2           | WASHER, NYLON, 5/8                          |
| 14          |                 | 12          | SCREW, BUTTON HD, 1/4-20 X 1/2              |

**Pitney Bowes**  
**Direct Mail Solutions**

**FIG. 2**



***Pitney Bowes***  
***Direct Mail Solutions***

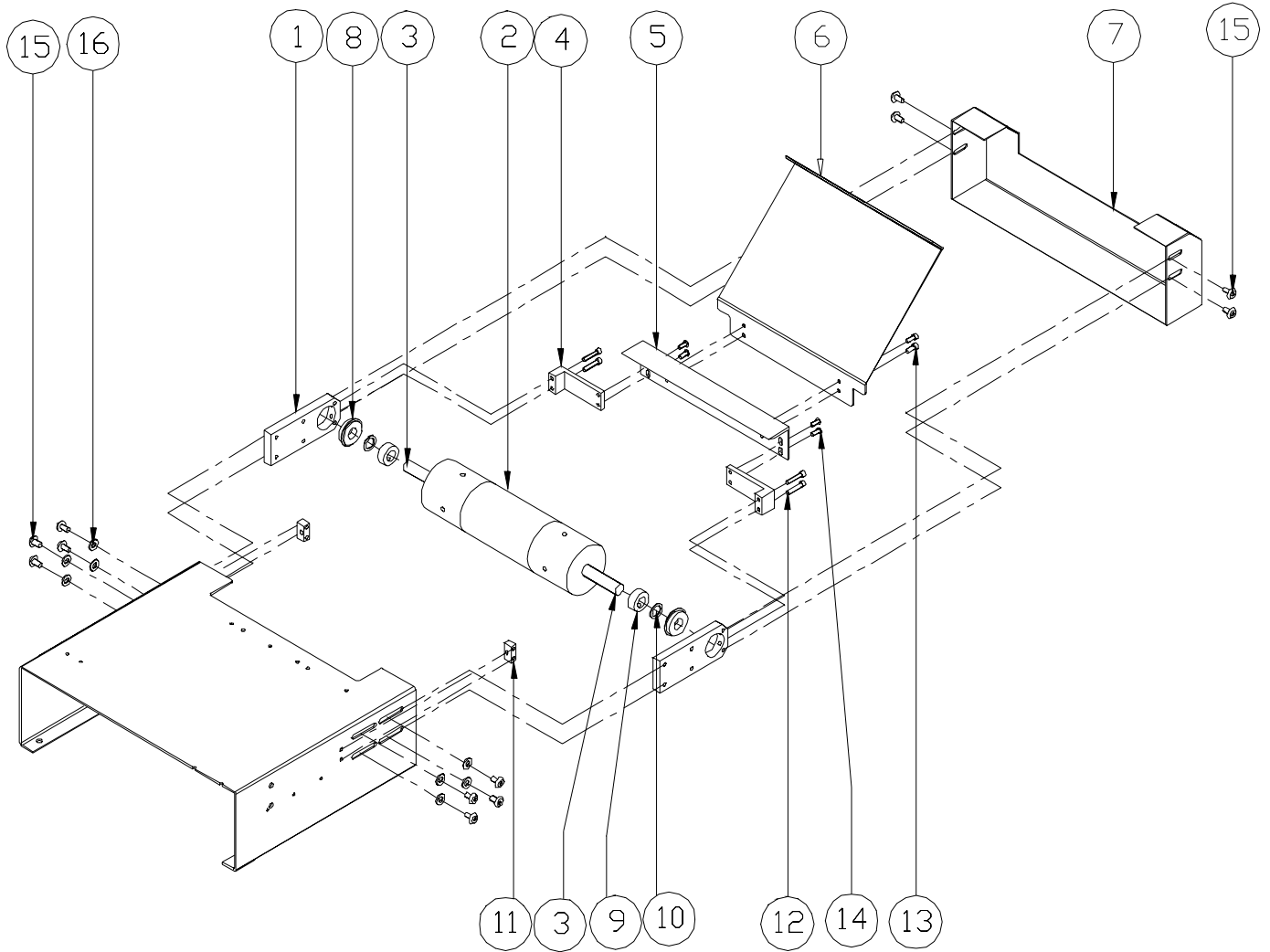
**6' COLLECTING CONVEYOR (Fig. 3)**  
**IDLER ASSEMBLY**

| <b>ITEM</b> | <b>PART NO.</b> | <b>QTY.</b> | <b>DESCRIPTION</b>                   |
|-------------|-----------------|-------------|--------------------------------------|
| 1           | 12007-033       | 2           | BLOCK, BEARING MTG.                  |
| 2           | 12006-018       | 1           | PULLEY, 10" CROWNED                  |
| 3           | 12004-013       | 2           | SHAFT, STUB IDLER                    |
| 4           | 12007-032       | 2           | BLOCK, GUIDE MTG.                    |
| 5           | 12005-027       | 1           | GUIDE, DISCHARGE TRANSFER            |
| 6           | 12011-035       | 1           | PLATE, ACCUMULATOR                   |
| 7           | 12013-021       | 1           | END CAP, IDLER ROLLER                |
| 8           | 99003-006       | 2           | BEARING, 5/8 X 1-3/8, SEALED W/ S.R. |
| 9           | 99017-029       | 2           | COLLAR, CLAMP ON, 5/8                |
| 10          | 99003-021       | 2           | WASHER, NYLON, 5/8 X 1/16            |
| 11          | 12007-002       | 2           | BLOCK, BEARING ADJ.                  |
| 12          |                 | 4           | SCREW, SKT HD, #10-24 X 1-1/4        |
| 13          |                 | 4           | SCREW, SKT HD, #10-24 X 3/8          |
| 14          |                 | 4           | SCREW, BUTTON HD, #10-24 X 3/4       |
| 15          |                 | 12          | SCREW, BUTTON HD, 1/4-20 X 1/2       |
| 16          |                 | 12          | WASHER, FLAT, 1/4                    |



**Pitney Bowes**  
**Direct Mail Solutions**

**FIG. 3**



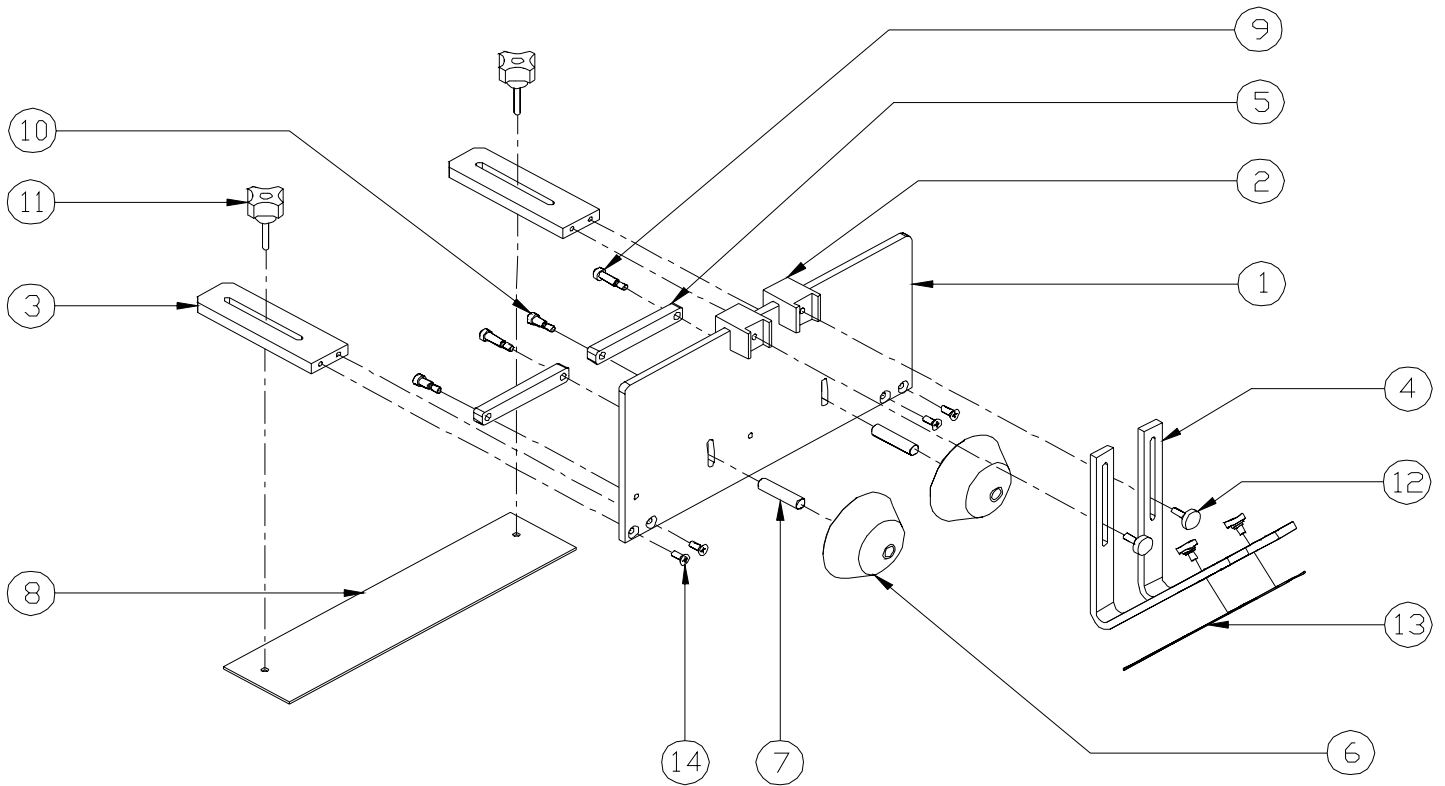
***Pitney Bowes***  
***Direct Mail Solutions***

**6' COLLECTING CONVEYOR (Fig. 4)**  
**KNOCK DOWN ASSEMBLY**

| <b>ITEM</b> | <b>PART NO.</b> | <b>QTY.</b> | <b>DESCRIPTION</b>             |
|-------------|-----------------|-------------|--------------------------------|
| 1           | 12011-007       | 1           | PLATE, KNOCK DOWN MTG.         |
| 2           | 12007-007       | 2           | BRACKET, KNOCK DOWN MTG.       |
| 3           | 12007-006       | 2           | BAR, KNOCK DOWN PLATE MTG      |
| 4           | 12008-001       | 2           | BRACKET, KNOCK DOWN            |
| 5           | 12008-021       | 2           | BAR, ROLLER MTG.               |
| 6           | 12006-020       | 2           | ROLLER, KNOCK DOWN             |
| 7           | 12004-028       | 2           | SHAFT, KNOCK DOWN ROLLER       |
| 8           | 12011-043       | 1           | PLATE, SPACER                  |
| 9           | 99033-002       | 2           | BOLT, SHOULDER, 1/4 X 5/8      |
| 10          | 99033-004       | 2           | BOLT, SHOULDER, 1/4 X 3/8      |
| 11          | 99004-019       | 2           | KNOB, MALE, #10-24 X 3/4       |
| 12          | 99004-002       | 4           | KNOB, #10 SCREW                |
| 13          | 12005-007       | 2           | STRAP, KNOCK DOWN              |
| 14          |                 | 4           | SCREW, FLAT HEAD, #10-24 X 1/2 |

**Pitney Bowes**  
**Direct Mail Solutions**

**FIG. 4**



***Pitney Bowes***  
***Direct Mail Solutions***

**SPEED SORT CONVEYOR (Fig. 5)**  
**ELECTRICAL ASSEMBLY**

| <b>ITEM</b> | <b>PART NO.</b> | <b>QTY.</b> | <b>DESCRIPTION</b>                        |
|-------------|-----------------|-------------|---|
| 1           | 98016-023       | 3           | CONNECTOR, 2-POS MALE, .093               |
| 2           | 98016-024       | 3           | CONNECTOR, 2-POS FEMALE, .093             |
| 3           | 98015-001       | 1           | STRAIN RELIEF, 1/2"                       |
| 4           | 98016-074       | 1           | RECEPTICAL, FLANGED, 3-PIN                |
| 5           | 98006-037       | 1           | SPEED POT, 1 MEG                          |
| 6           | 98016-036       | 1           | SPEED POT, 10K                            |
| 7           | 98006-021       | 2           | KNOB, SPEED POT                           |
| 8           | 98006-004       | 1           | DIAL, SPEED POT                           |
| 9           | 98004-001       | 1           | CIRCUIT BREAKER, 2 AMP                    |
| 10          | 98005-001       | 1           | MOTOR CONTROLLER, 90V DC                  |
| 11          | 98006-002       | 1           | RAW I/O BOARD                             |
| 12          | 98001-001       | 1           | TERMINAL STRIP, 10-CONNECTION             |
| 13          | 98008-001       | 1           | TANSFORMER, 24 VAC                        |
| 14          | 98016-011       | 1           | RECEPTICAL, SQ FL, 4-POS FEMALE           |
| 15          | 12013-016       | 1           | ENCLOSURE, ELECTRICAL                     |
| 16          | 12013-017       | 1           | COVER, ENCLOSURE                          |
| 17          | 98016-115       | 3           | CONNECTOR, 3-POS MALE, .093               |
| 18          | 98016-116       | 3           | CONNECTOR, 3-POS FEMALE, .093             |
| 19          | 98009-023       | 1           | SENSOR, PHOTOELECTRIC TRIGGER             |
| 20          | 98016-062       | 1           | CONNECTOR, 6-POS MALE, .093 (NOT SHOWN)   |
| 21          | 98016-063       | 1           | CONNECTOR, 6-POS FEMALE, .093 (NOT SHOWN) |
| 22          | 98016-036       | 4           | QUICK CONNECT, .250 (NOT SHOWN)           |

# Pitney Bowes Direct Mail Solutions

FIG. 5

