

DRYER BASE SYSTEM

Parts Manual



12050 49th Street North
Clearwater, Florida 33762

Phone: 727-571-3330 Fax: 727-571-3443
TOLL FREE: 1-800-INSERTER
Web: www.sure-feed.com

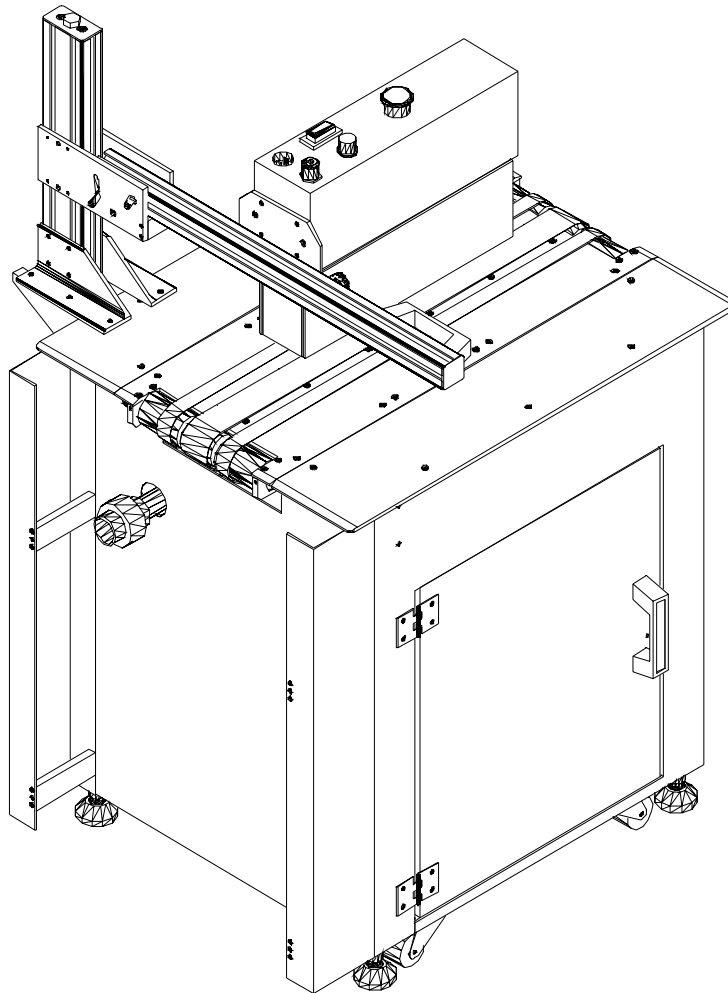
TABLE OF CONTENTS

DRYER BASE SYSTEM

DRYER BASE SYSTEM ASSEMBLY (Fig. 1).....	3
FRAME ASSEMBLY (Fig. 2)	5
CONVEYOR DRIVE ASSEMBLY (Fig. 3).....	7
DRIVE SHAFT / TENSIONER ASSEMBLY (Fig. 4).....	9
IDLER PULLEY / BELT GUIDE ASSEMBLY (Fig. 5).....	11
VACUUM ASSEMBLY (Fig. 6)	13

Sure-Feed
Engineering Inc

DRYER BASE SYSTEM



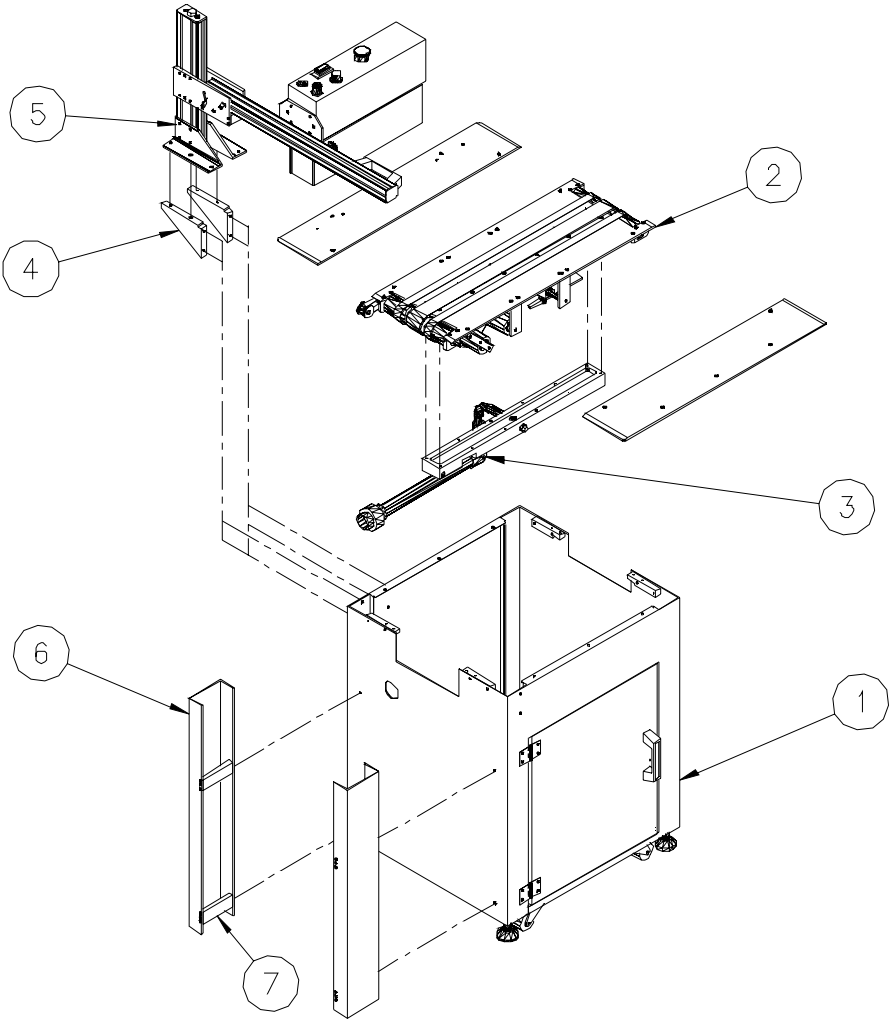
Sure-Feed
Engineering Inc

DRYER BASE SYSTEM ASSEMBLY (Fig. 1)

ITEM	PART NO.	QTY.	DESCRIPTION
1	SEE FIG. 2	1	FRAME ASSEMBLY
2	SEE FIG. 3-5	1	CONVEYOR DRIVE ASSEMBLY
3	SEE FIG. 6	1	VACUUM ASSEMBLY
4	16007-015	2	BLOCK, DRYER SUPPORT
5	98021-001	1	SPEED DRYER ASSEMBLY
6	16011-015	2	PANEL, INK JET / DRYER MTG.
7	16012-006	4	SPACER, CABINET STIFFENING
8	NOT SHOWN	4	SCREW, FLAT HD, 6-32 X 1/2 (CABINET SPACER)
9	NOT SHOWN	2	SCREW, SKT HD, 14-20 X 3/4 (CABINET SPACER)

Sure-Feed
Engineering Inc

FIG. 1

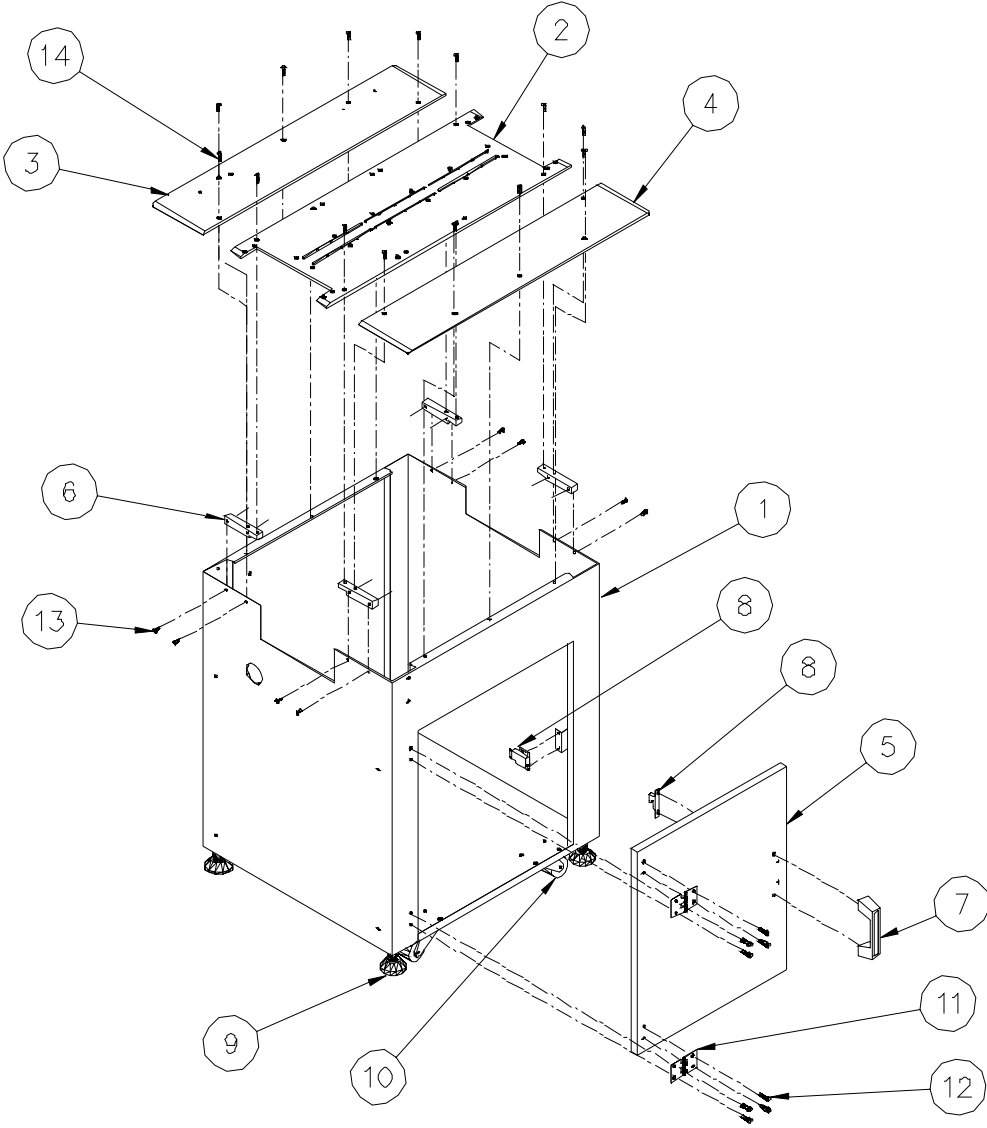


Sure-Feed
Engineering Inc

DRYER BASE SYSTEM (Fig. 2)
FRAME ASSEMBLY

ITEM	PART NO.	QTY.	DESCRIPTION
1	16000-004	1	BASE, FRAME WELDMENT, DRYER CONVEYOR
2	16011-012	1	PLATE, DRYER, TOP CENTER
3	16011-014	1	PLATE, DRYER, TOP LH
4	16011-013	1	PLATE, DRYER, TOP RH
5	16013-005	1	DOOR, RH
6	16007-014	4	BLOCK, TOP PLATE MTG.
7	99012-001	1	HANDLE, DOOR
8	99013-001	1	LATCH, DOOR
9	99010-001	4	FOOT, ADJUSTABLE, 5/8-11
10	99010-002	4	CASTER, 2"
11	99011-002	2	HINGE, DOOR
12		8	SCREW, SKT HD, 1/4-20 X 5/8
13		8	SCREW, BUTTON HD, 10-24 X 1/2
14		14	SCREW, FLAT HD, 10-24 X 5/8
15	NOT SHOWN	4	NUT, HEX, 5/8-11 (ADJ. FOOT)
16	NOT SHOWN	8	NUT, HEX, 1/4-20 (DOOR HINGE)
17	NOT SHOWN	8	WASHER, FLAT, 1/4 (DOOR HINGE)
18	NOT SHOWN	16	SCREW, HEX HD, 5/16-18 X 3/4 (WHEELS)
19	NOT SHOWN	16	WASHER, LOCK, 5/16 (WHEELS)
20	NOT SHOWN	16	WASHER, FLAT, 5/16 (WHEELS)
21	NOT SHOWN	16	NUT, HEX, 5/16-18 (WHEELS)

FIG. 2

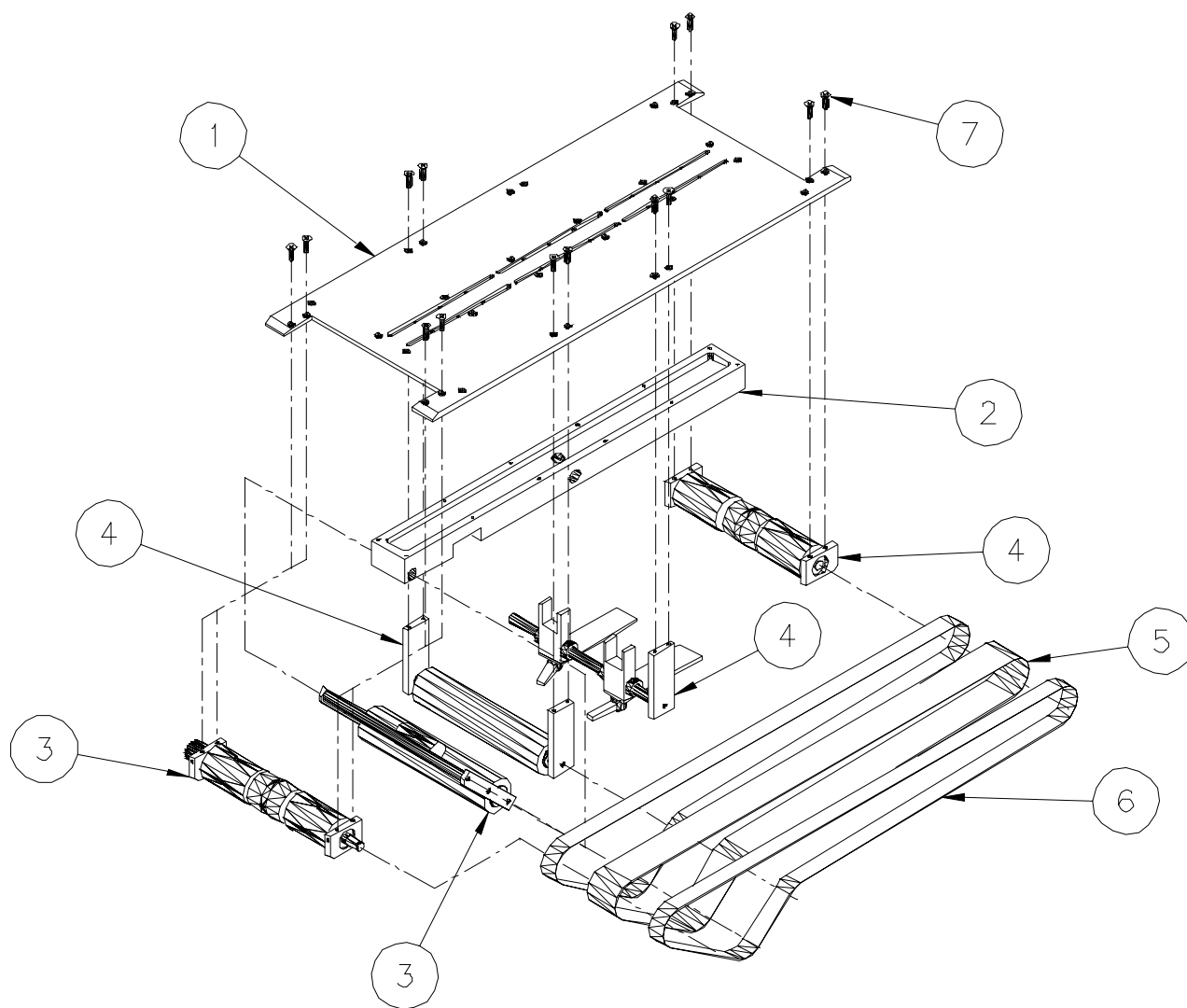


Sure-Feed
Engineering Inc

DRYER BASE SYSTEM (Fig. 3)
CONVEYOR DRIVE ASSEMBLY

ITEM	PART NO.	QTY.	DESCRIPTION
1	16011-012	1	PLATE, DRYER, CENTER (REF. FIG. 2)
2	16007-012	1	BLOCK, MANIFOLD, DRYER CONVEYER
3	SEE FIG. 4	1	DRIVE SHAFT / TENSIONER ASSEMBLY
4	SEE FIG. 5	1	PULLEY IDLER / BELT GUIDE ASSEMBLY
5	16014-002	1	BELT, HI-TEMP, 2" WIDE X 62.50
6	99000-061	2	BELT, HI-TEMP, 1" WIDE X 62.50
7		14	SCREW, FLAT HD, 1/4-20 X 5/8
8	NOT SHOWN	12	SCREW, FLAT HD, 10-24 X 1/2 (MANIFOLD MTG.)

FIG. 3



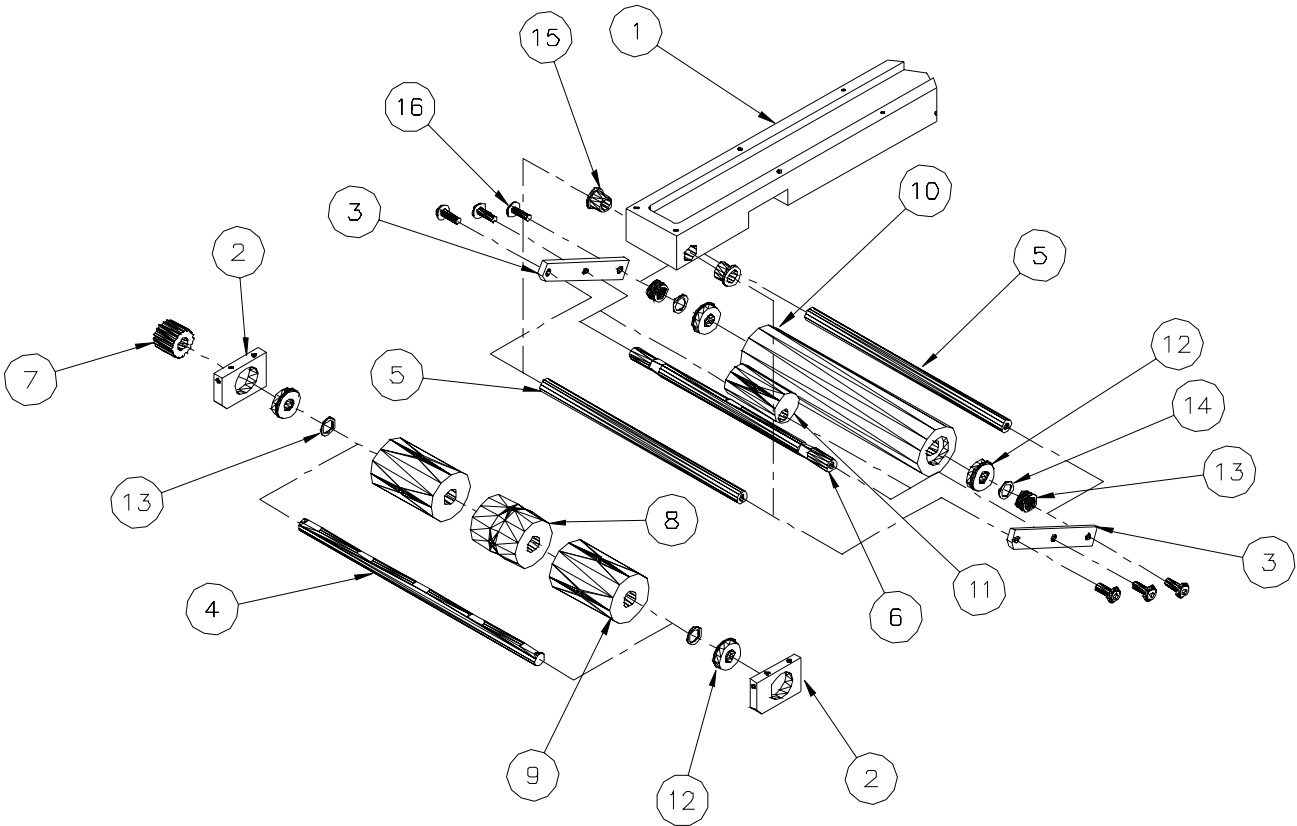
Sure-Feed
Engineering Inc

DRYER BASE SYSTEM – CONVEYOR DRIVE (Fig. 4)
DRIVE SHAFT / TENSIONER ASSEMBLY

ITEM	PART NO.	QTY.	DESCRIPTION
1	16007-012	1	BLOCK, MANIFOLD, DRYER (REF. FIG. 3)
2	16007-013	2	BLOCK, BEARING
3	16008-002	2	BAR, IDLER TENSIONER
4	16004-012	1	SHAFT, DRIVE
5	16004-004	2	SHAFT, PIVOT
6	16004-003	1	SHAFT, TENSIONER
7	99002-026	1	PULLEY, 18XL037, 1/2 BORE W/OUT FLANGES
8	16006-010	1	PULLEY, DRIVE (CROWNED)
9	16006-011	2	PULLEY, DRIVE (3-3/8 FLAT)
10	16006-002	1	PULLEY, IDLER
11	16006-003	1	PULLEY, ECCENTRIC
12	99003-007	4	BEARING, SEALED, 1/2 X 1-1/8
13	99003-018	14	WASHER, NYLON, 1/2 X 1/16
14	99003-032	2	WASHER, NYLON, 1/2 X 1/32
15	99003-043	2	BUSHING, FL, 1/2 X 5/8 X 1/2
16		6	SCREW, BUTTON HD, 1/4-20 X 3/4

Sure-Feed
Engineering Inc

FIG. 4

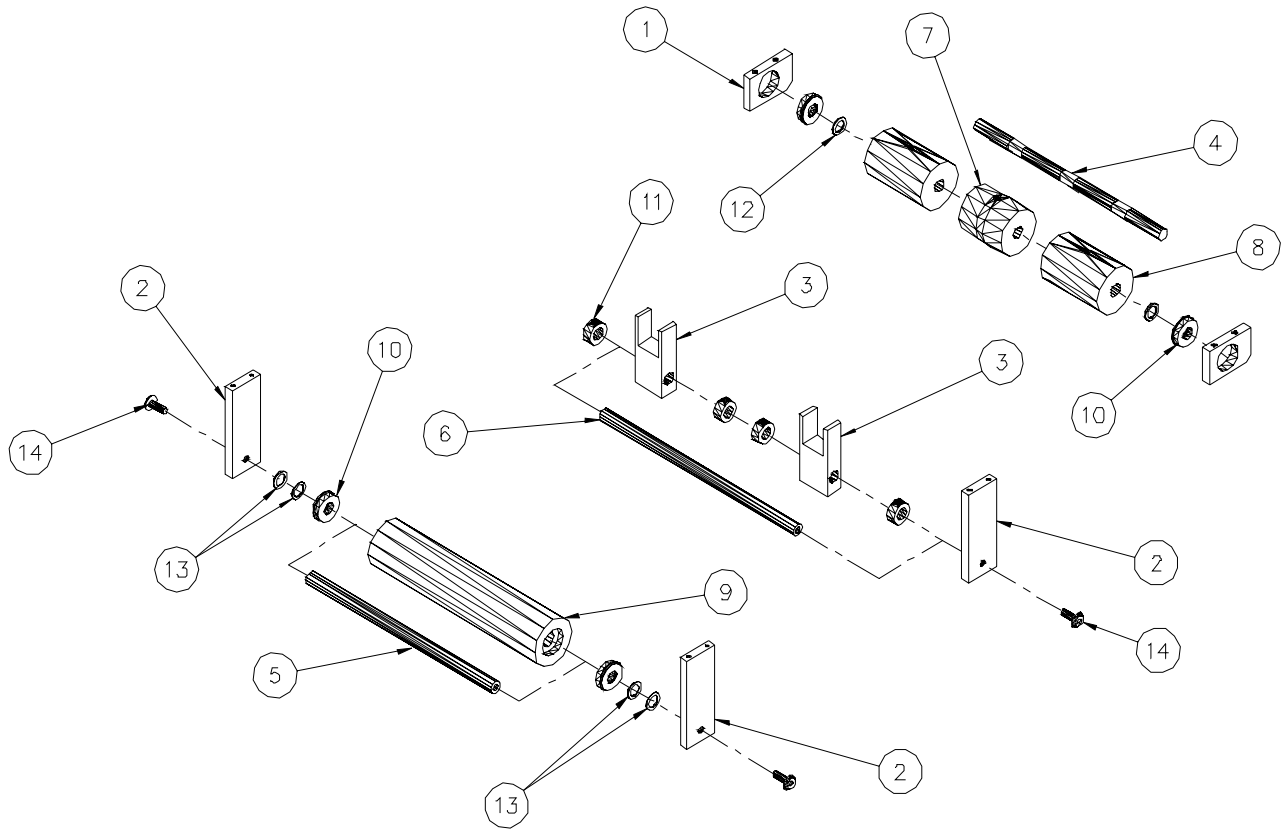


Sure-Feed
Engineering Inc

**DRYER BASE SYSTEM – CONVEYOR DRIVE (Fig. 5)
 IDLER PULLEY / BELT GUIDE ASSEMBLY**

ITEM	PART NO.	QTY.	DESCRIPTION
1	16007-013	2	BLOCK, BEARING
2	16009-002	3	BRACKET, BELT GUIDE SUPPORT
3	16005-003	2	GUIDE, BELT, 1"
4	16004-013	1	SHAFT, IDLER
5	16004-004	1	SHAFT, PIVOT
6	16004-011	1	SHAFT, BELT GUIDE SUPPORT
7	16006-010	1	PULLEY, DRIVE (CROWNED)
8	16006-011	2	PULLEY, DRIVE (3-3/8 FLAT)
9	16006-002	1	PULLEY, IDLER
10	99003-007	4	BEARING, SEALED, 1/2 X 1-1/8
11	99017-004	4	COLLAR, SET, 1/2
12	99003-018	2	WASHER, NYLON, 1/2 X 1/16
13	99022-004	4	SNAP RING, 1/2
14		4	SCREW, BUTTON HD, 1/4-20 X 3/4

FIG. 5

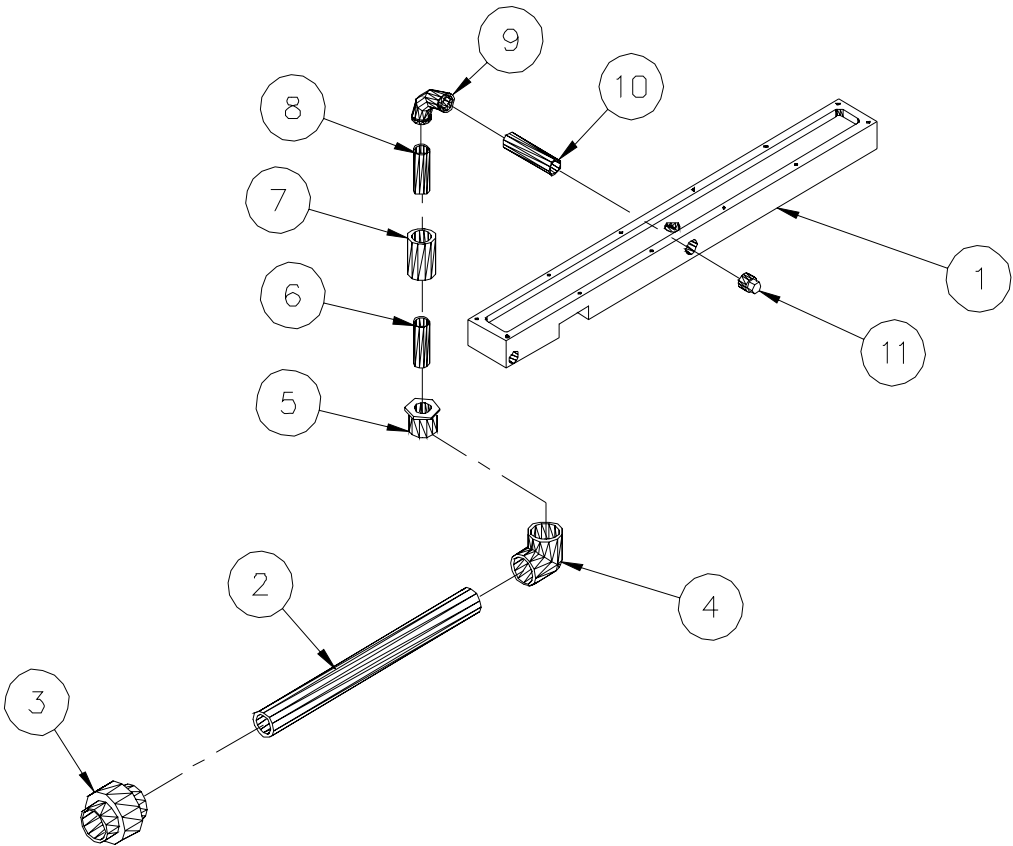


Sure-Feed
Engineering Inc

DRYER BASE SYSTEM (Fig. 6)
VACUUM ASSEMBLY

ITEM	PART NO.	QTY.	DESCRIPTION
1	16007-012	1	BLOCK, MANIFOLD
1	99028-048	2'	PIPE, PVC, 1"
3	99028-049	1	UNION, PVC, 1" NPT
4	99028-050	1	ELBOW, PVC, 1" NPT
5	99028-053	1	BUSHING, REDUCING, 1" X 3/4
6	99028-054	1'	PIPE, PVC, 3/4
7	99031-006	1	HOSE, REINFORCED EDPM, 1" ID
8	16018-013	1	HOSE NIPPLE, BRASS, 3/4 NPT X 2"
9	99028-058	1	ELBOW, BRASS, 3/4
10	99028-057	1	NIPPLE, BRASS, 3/4 NPT X 4"
11	99028-059	1	PLUG, BRASS, 3/4

FIG. 6



Sure-Feed
Engineering Inc