

SJ-30

FEEDER

Parts Manual



SURE-FEED
engineering, inc.

3360 Scherer Drive St. Petersburg, FL 33716

PHONE: 727.571.3330 FAX: 727.571.3443 1-800-INSERTER

www.sure-feed.com

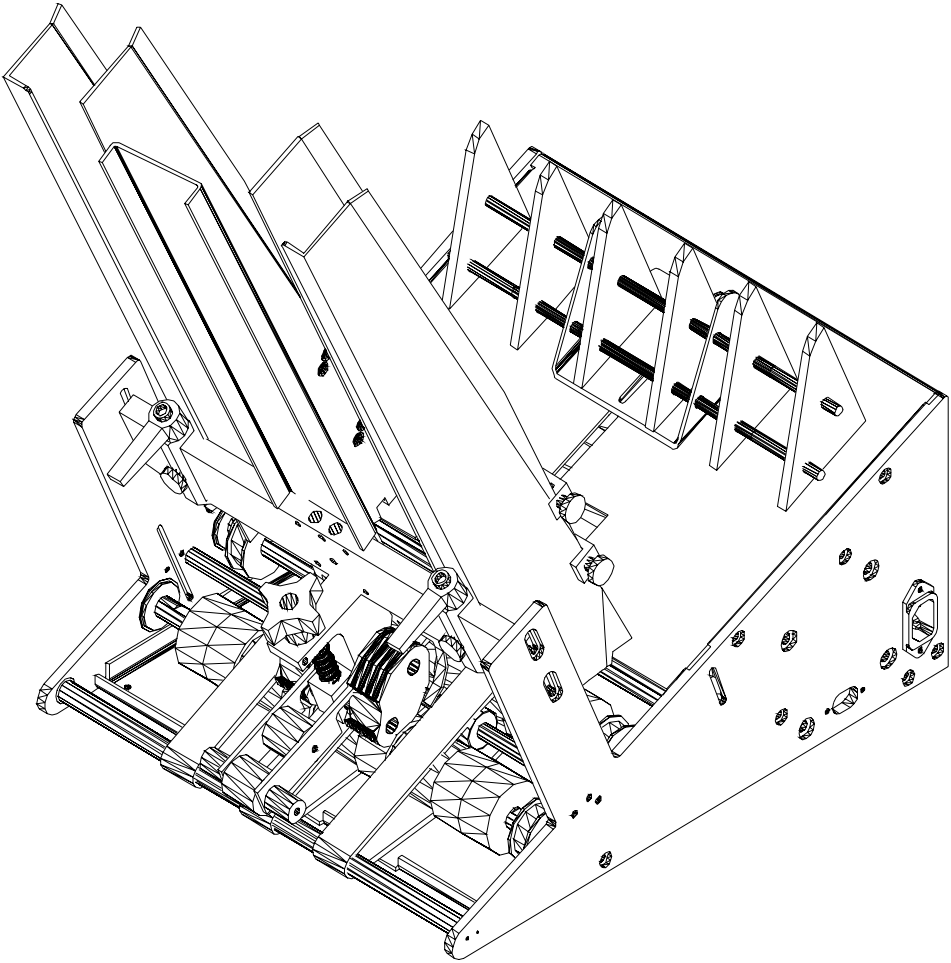
TABLE OF CONTENTS

SJ30 FEEDER

I.	SJ30 FEEDER ASSEMBLY (FIG. 1).....	3
II.	SEPERATOR DEVICE ASSEMBLY (FIG. 2).....	5
III.	SIDE GUIDE ASSEMBLY (FIG.3).....	7
IV.	FRONT, NIP, SUPPORT IDLER SHAFT ASSY (FIG.4).....	9
V.	MAIN, JACK, AND ELEVATOR SHAFT ASSY (FIG. 5).....	11
VI.	PAPER SLIDE ASSEMBLY (FIG. 6).....	13
VII.	CHASSIS / ELECTRICAL ASSEMBLY (FIG. 7).....	15
VIII.	TRAILER ARM ASSEMBLY (FIG. 8).....	17

Sure-Feed
Engineering Inc

SJ30 FEEDER



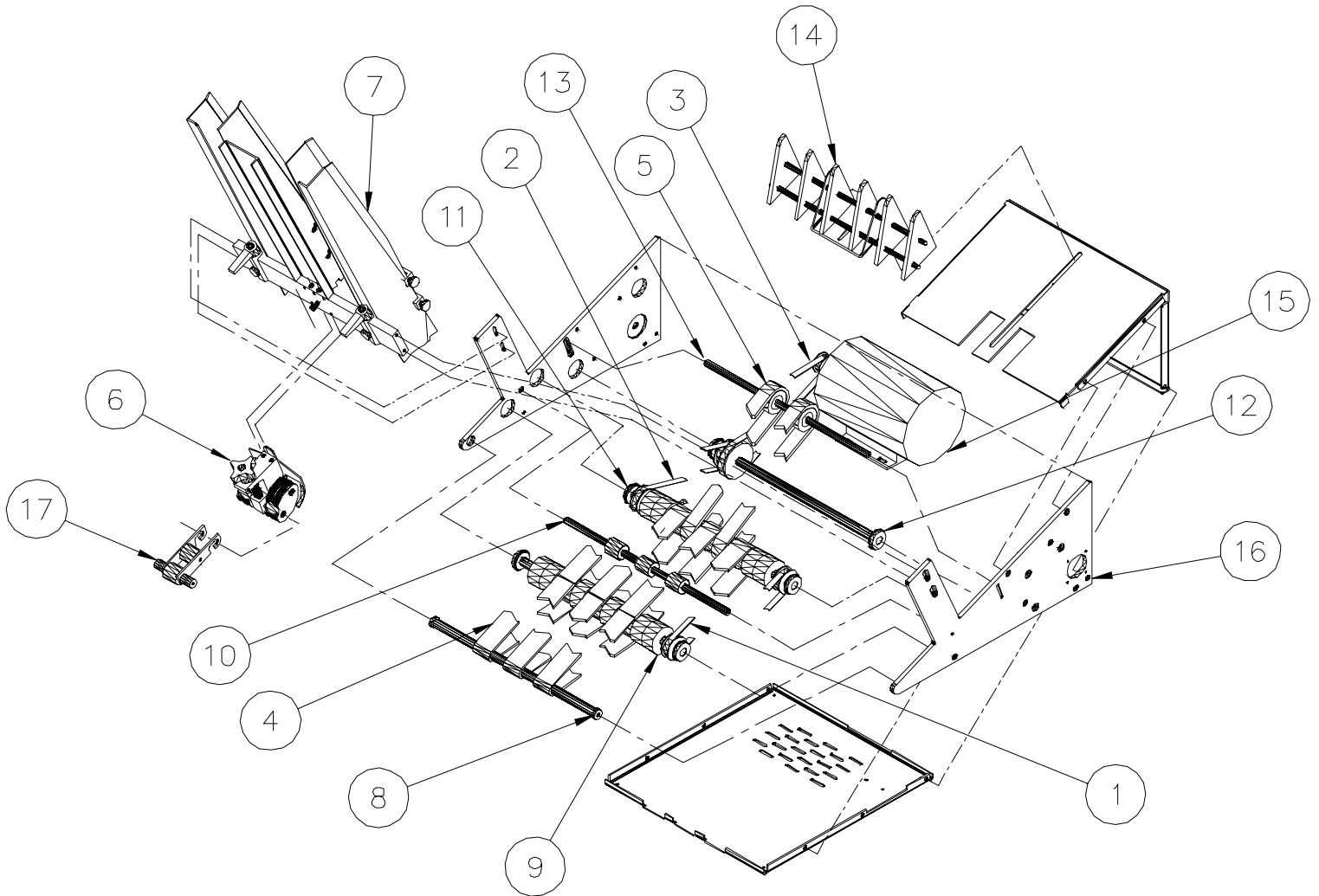
Sure-Feed
Engineering Inc

SJ30 FEEDER ASSEMBLY (Fig. 1)

ITEM	PART NO.	QTY.	DESCRIPTION
1	99000-001	1	BELT, TIMING 90XL
2	99000-002	1	BELT, TIMING 110XL
3	99000-003	1	BELT, TIMING 120XL
4	99000-004	3	BELT, RED GUM
5	99000-005	2	BELT, ELEVATOR
6	SEE FIG. 2	1	SEPERATOR DEVICE ASSEMBLY (ECO)
7	SEE FIG. 3	1	SIDE GUIDE ASSEMBLY
8	SEE FIG.4	1	FRONT SHAFT ASSEMBLY
9	SEE FIG. 4	1	NIP ROLLER SHAFT ASSEMBLY
10	SEE FIG. 4	1	SUPPORT IDLER SHAFT ASSEMBLY
11	SEE FIG. 5	1	MAIN SHAFT ASSEMBLY
12	SEE FIG. 5	1	JACK SHAFT ASSEMBLY
13	SEE FIG. 5	1	ELEVATOR SHAFT ASSEMBLY
14	SEE FIG. 6	1	PAPER SLIDE ASSEMBLY
15	SEE FIG. 7	1	MOTOR ASSEMBLY
16	SEE FIG. 7	1	CHASSIS / ELECTRICAL ASSEMBLY
17	SEE FIG. 8	1	TRAILING ARM ASSEMBLY

Sure-Feed
Engineering Inc

FIG. 1

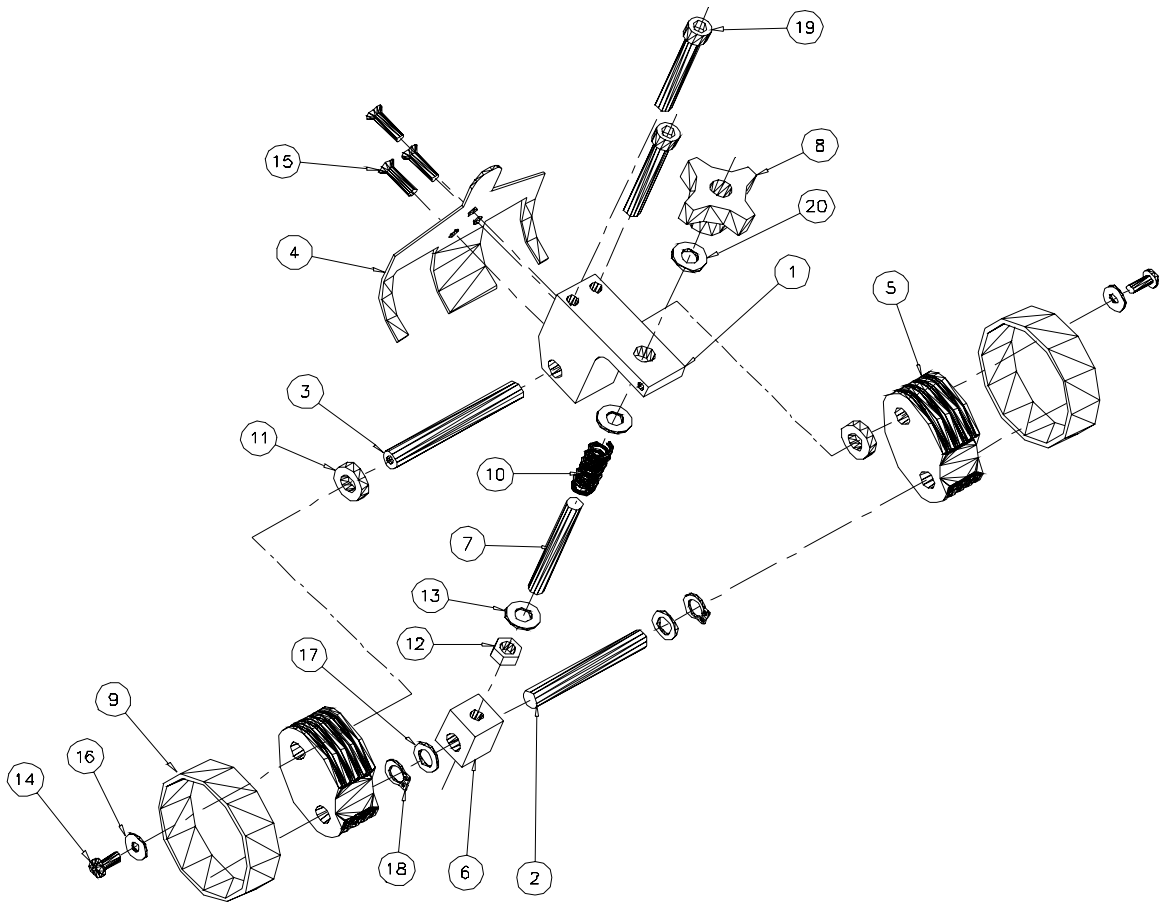


Sure-Feed
Engineering Inc

SEPARATOR DEVICE ASSEMBLY (ECO-SERIES) (Fig. 2)

ITEM	PART NO.	QTY.	DESCRIPTION
1	10007-002	1	BLOCK, FOOTBALL SEPARATOR
2	10004-059	1	SHAFT, FOOTBALL ALIGNING
3	10004-058	1	SHAFT, FOOTBALL SEPARATOR
4	10005-025	1	SHROUD, SEPARATOR
5	10007-005	2	BLOCK, FOOTBALL.
6	10007-012	1	BLOCK, SEPARATOR ADJUSTING
7	10004-028	1	STUD, SEPARATOR ADJUSTING
8	99004-001	1	KNOB, 5/16-24, FE
9	10014-001	2	BELT, SEPARATOR, 3"
10	99005-001	1	SPRING, .068 X .48 X 1-7/16"
11	10012-005	2	SPACER, FOOTBALL SEPERATOR
12		1	NUT, HEX 5/16-24
13		2	WASHER, FLAT 5/16
14		2	SCREW, PAN HD 10-24 X 3/8
15		3	SCREW, FL HD 8-32 X 1
16		2	WASHER, FLAT, #10
17	99003-017	2	WASHER, NYLON 3/8 ID X 1/16
18	99022-003	2	SNAP RING, 3/8
19		2	SCREW, SOCKET HD, 5/16-18 X 2 1/2
20	99003-015	1	WASHER, NYLON, 5/16 X 1/16

FIG. 2

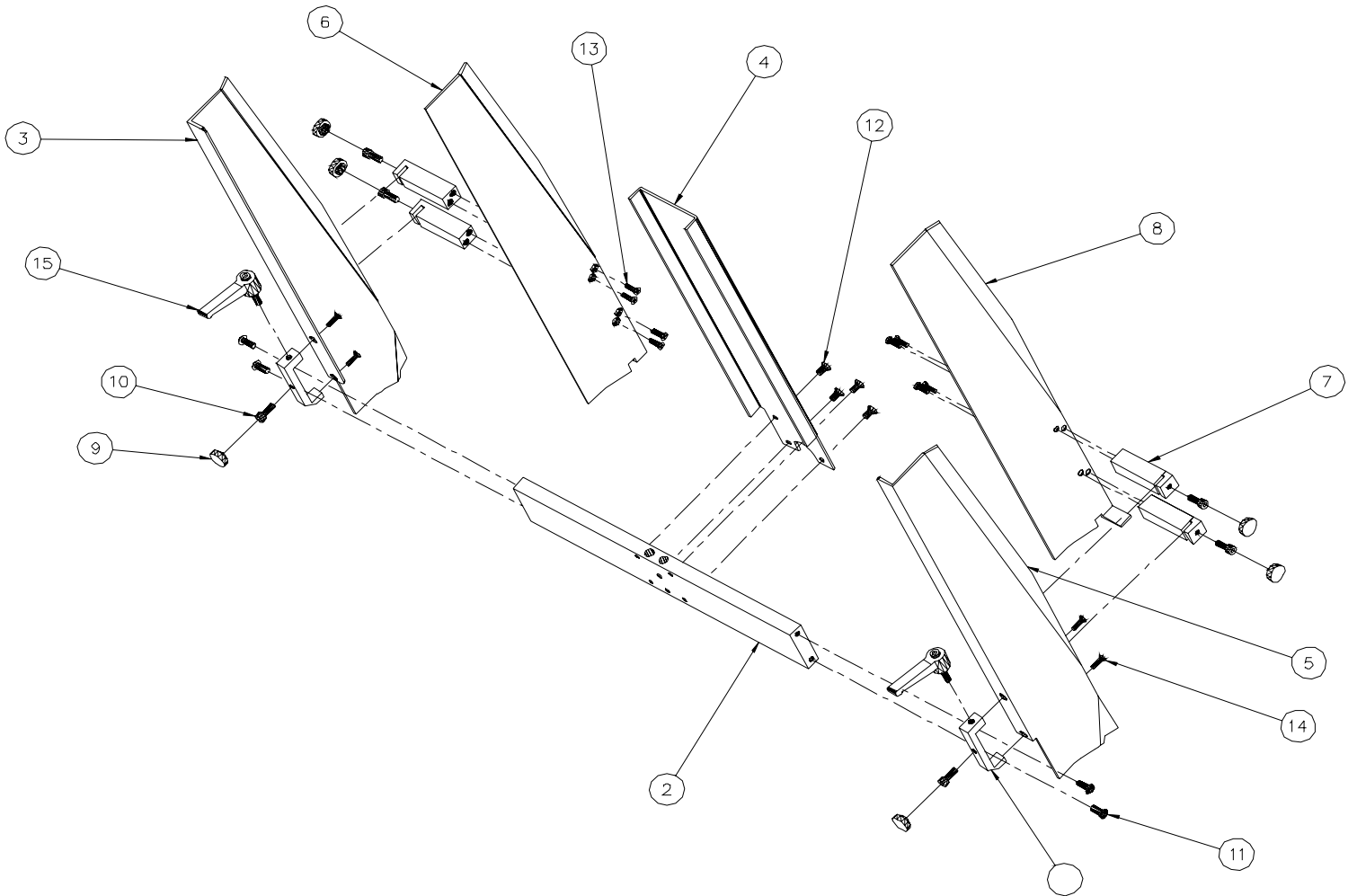


Sure-Feed
Engineering Inc

SIDE GUIDE ASSEMBLY (Fig. 3)

ITEM	PART NO.	QTY.	DESCRIPTION
1	10009-002	2	BRACKET, SIDE GUIDE MTG
2	10003-002	1	CROSS BAR, SE-1200-IJ & P
3	10005-009	1	GUIDE, SIDE RH (TALL) SE-1200
4	10005-002	1	GUIDE, FRONT PAPER (TALL)
5	10005-008	1	GUIDE, SIDE, LH (TALL) SE-1200
6	10005-014	1	GUIDE, BUSINESS RH (TALL) SE-1200
7	10007-008	4	BLOCK, BUSINESS GUIDE MTG.
8	10005-015	1	GUIDE, BUSINESS, LH (TALL) 1200
9	99004-002	6	KNOB, #10 SCREW
10		8	SCREW, SKT HD 10-24 X 1/2
11		4	SCREW, BTN HD 10-24 X 1/2
12		4	SCREW FL HD 10-24 X 3/8
13		8	SCREW FL HD 8/32 X 1/2
14		4	SCREW FL HD 6/32 X 1/2
15	99004-003	2	HANDLE, RATCHET, 10-24

FIG. 3

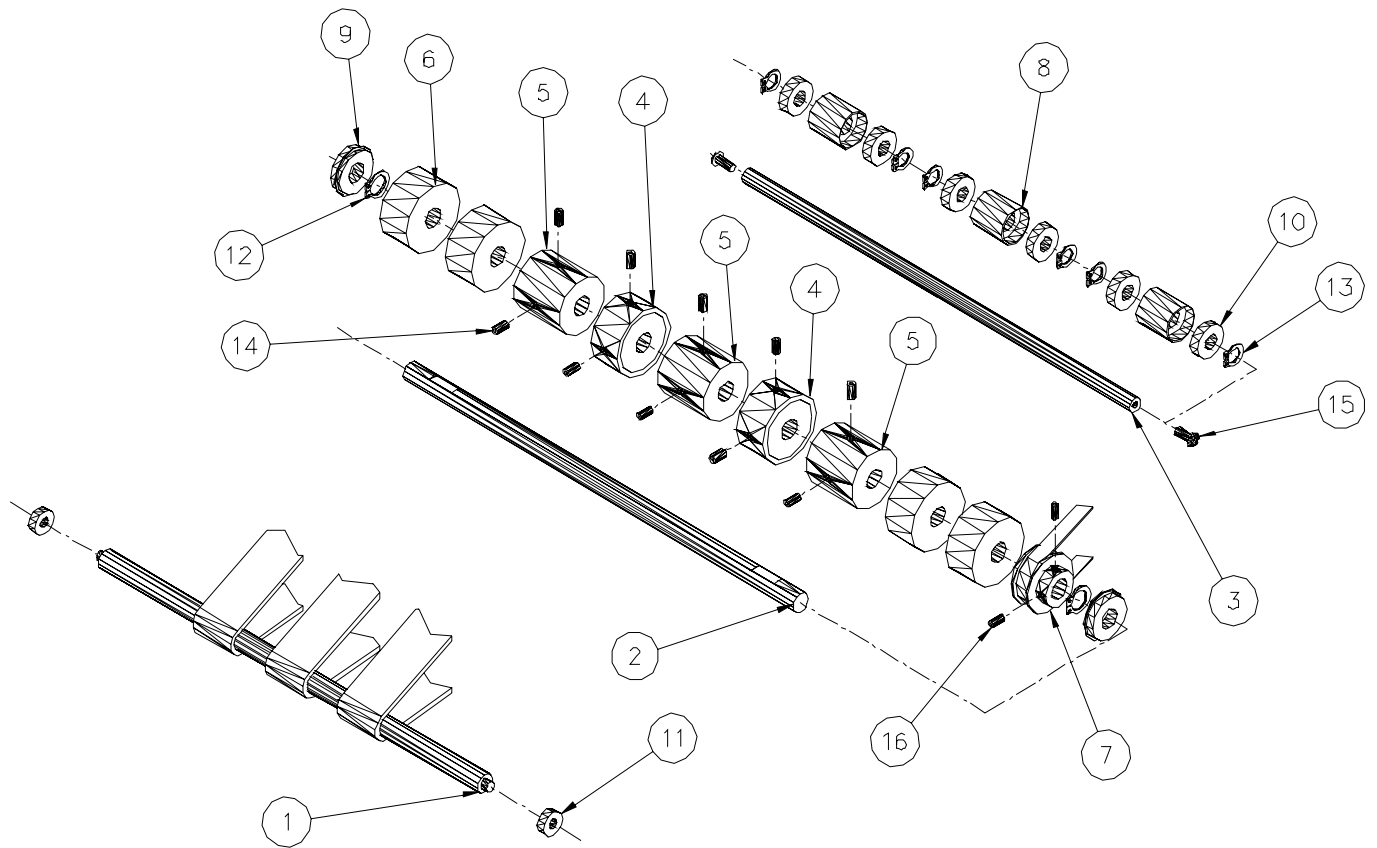


Sure-Feed
Engineering Inc

**FRONT SHAFT, NIP ROLLER SHAFT, AND
 SUPPORT SHAFT ASSEMBLY (Fig. 4)**

ITEM	PART NO.	QTY.	DESCRIPTION
1	10004-024	1	SHAFT, FRONT SE-1200-P & IJ
2	10004-022	1	SHAFT, NIP ROLLER SE-1200-P & IJ
3	10004-023	1	SHAFT, SUPPORT IDLER SE-1200-P & IJ
4	10006-013	2	NIP ROLLER
5	10006-015	3	PULLEY, MATE
6	10006-007	4	FEEDER ROLLER
7	99002-003	1	PULLEY, 20XL037 (NO HUB, 1/2" BORE)
8	10006-012	3	ROLLER, IDLER
9	99003-003	2	BEARING, 1/2" ID X 1-1/8" OD W/GROOVE
10	99003-001	6	BEARING, 3/8 ID X 7/8 OD
11	99003-002	2	BEARING, 1/4" ID X 5/8" OD SEALED
12	99022-004	2	SNAP RING 1/2
13	99022-003	6	SNAP RING 3/8
14		10	SCREW, SET 10-24 X 3/8
15		2	SCREW, BTN HD 10-24 X 1/2
16		2	SCREW, SET 8/32 X 3/8

FIG. 4

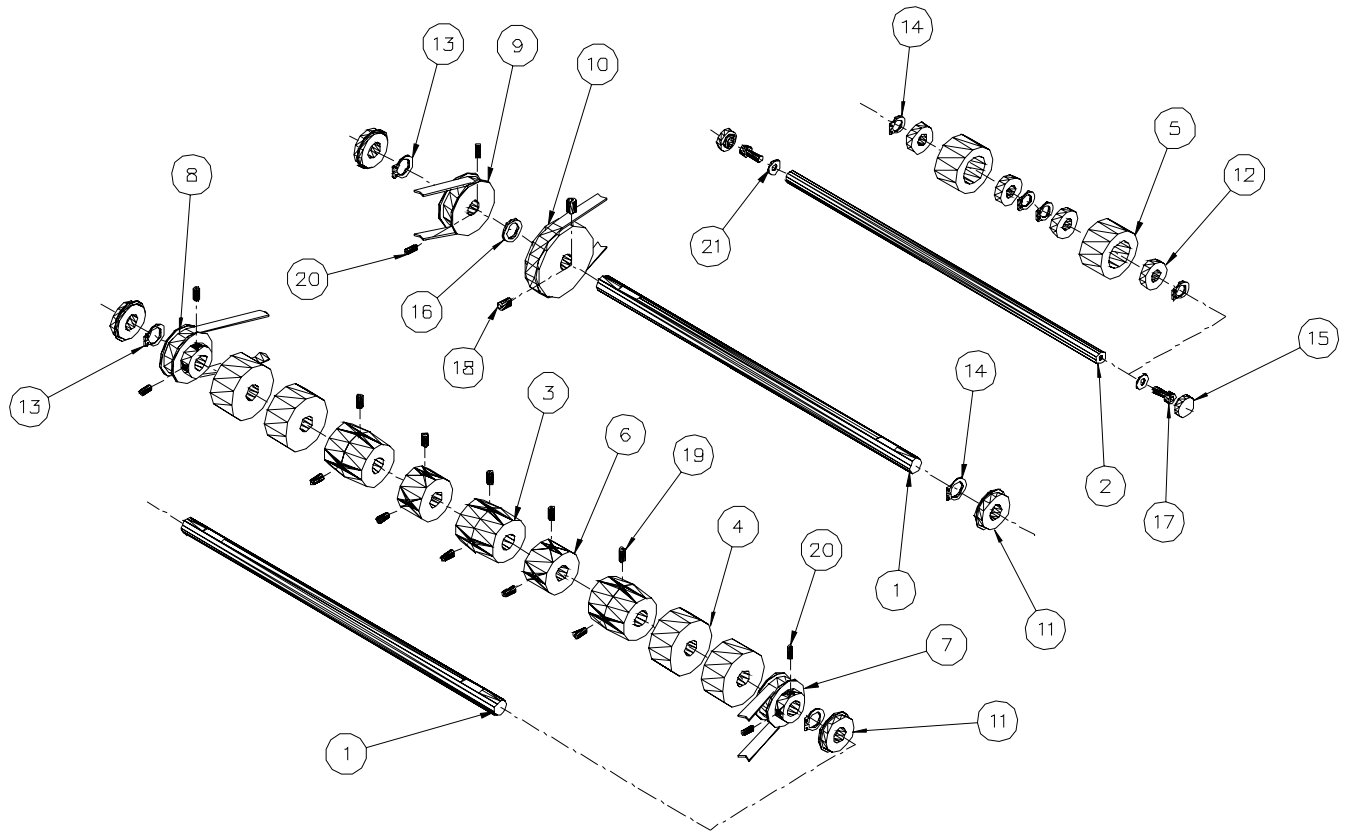


Sure-Feed
Engineering Inc

**MAIN SHAFT, JACK SHAFT, AND ELEVATOR SHAFT
ASSEMBLY (Fig. 5)**

ITEM	PART NO.	QTY.	DESCRIPTION
1	10004-022	2	SHAFT, NIP ROLLER SE-1200-P & IJ
2	10004-023	1	SHAFT, SUPPORT IDLER SE-1200-P & IJ
3	10006-018	3	PULLEY, CROWNED (GUM BELT DRIVE)
4	10006-007	4	FEEDER ROLL
5	10006-022	2	PULLEY, IDLER 24XL875
6	10006-021	2	PULLEY, DRIVE 22XL875
7	99002-003	1	PULLEY, 20XL037 (NO HUB, 1/2" BORE)
8	99002-004	1	PULLEY, 22XL037 (1/2" BORE)
9	99002-006	1	PULLEY, 24XL037 (NO HUB, 1/2" BORE)
10	99002-005	1	PULLEY, 36XL037 (1/2" BORE, NO FLANGE)
11	99003-003	4	BEARING, 1/2" ID X 1-1/8" OD W/GROOVE
12	99003-001	4	BEARING, 3/8 ID X 7/8 OD
13	99022-004	4	SNAP RING, 1/2
14	99022-003	4	SNAP RING, 3/8
15	99004-002	2	KNOB, #10 SCREW
16	99003-018	1	WASHER, NYLON, 1/2 X 1/16
17		2	SCREW, SKT HD 10-24 X 1/2
18		2	SCREW, SET 1/4-20 X 3/8
19		10	SCREW, SET 10-24 X 3/8
20		6	SCREW, SET 8/32 X 3/8
21		2	WASHER, FLAT, #10

FIG. 5

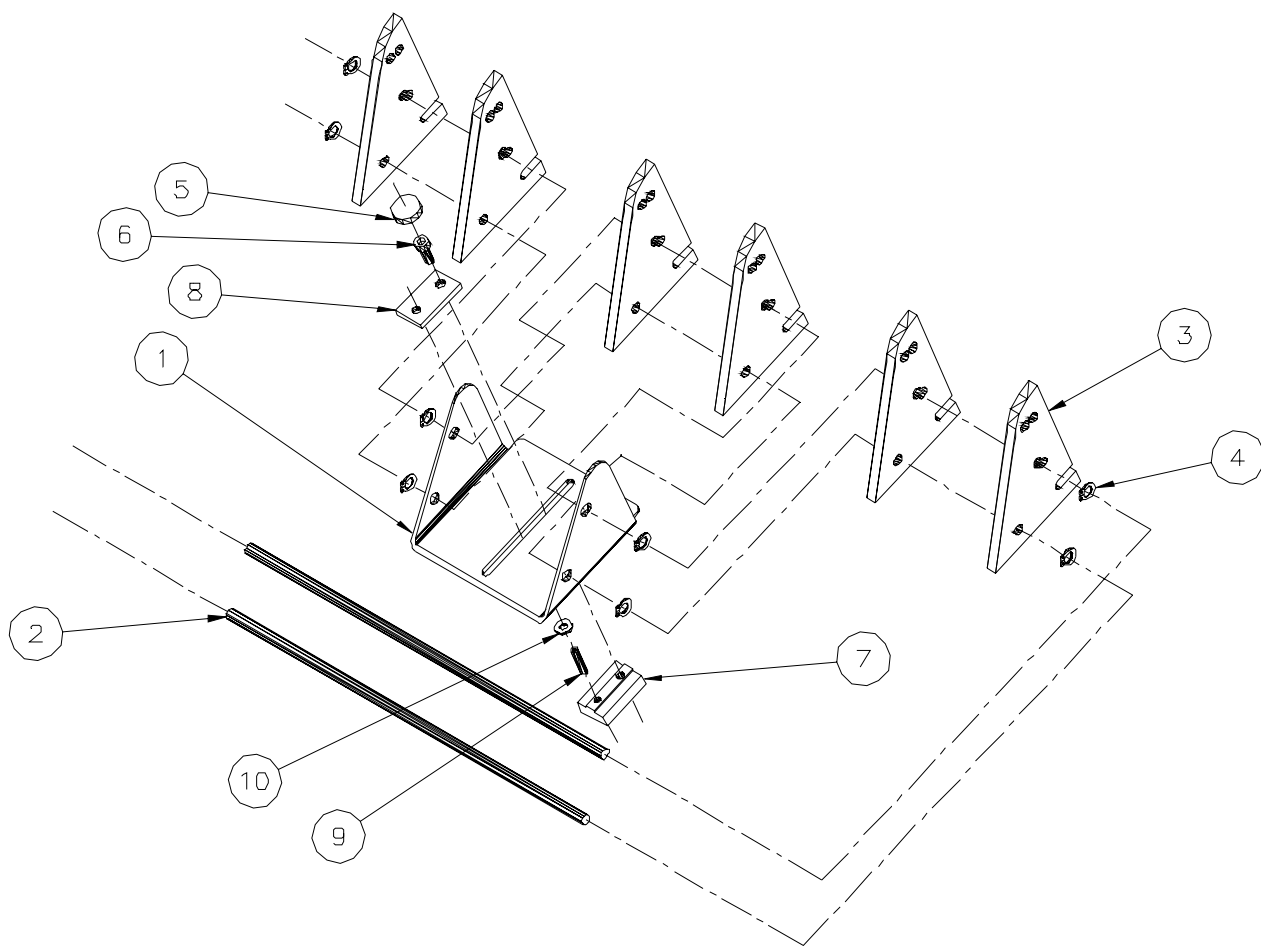


Sure-Feed
Engineering Inc

PAPER SLIDE ASSEMBLY (Fig. 6)

ITEM	PART NO.	QTY.	DESCRIPTION
1	10009-003	1	BRACKET, PAPER SLIDE
2	10004-006	2	SHAFT, PAPER SLIDE SE-1200
3	10005-016	6	SLIDE, PAPER
4	99022-001	8	RETAINING RING, 1/4"
5	99004-002	1	KNOB, #10 SCREW
6		1	SCREW, SKT HD, 10-24 X 1/2
7	10007-003	1	NUT, PAPER SLIDE
8	10007-004	1	WASHER, PAPER SLIDE
9	99006-020	1	PIN, ROLL, 5/32 X 3/4
10		1	WASHER, FLAT, #6

FIG. 6

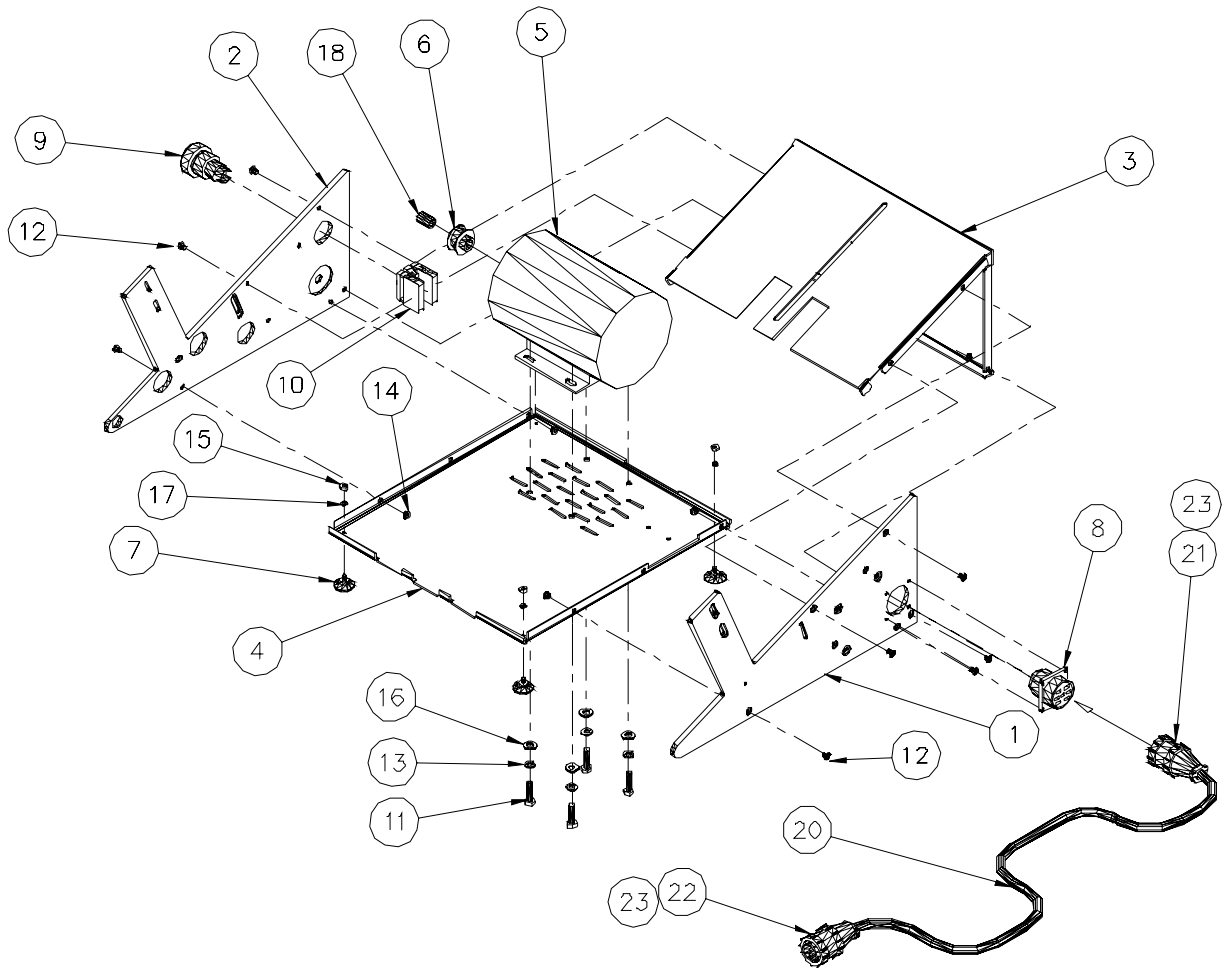


Sure-Feed
Engineering Inc

MOTOR / CHASSIS / ELECTRICAL ASSEMBLY (Fig. 7)

ITEM	PART NO.	QTY.	DESCRIPTION
1	10000-003	1	SIDE FRAME, RH SE-1200-IJ
2	10000-004	1	SIDE FRAME, LH SE-1200-IJ
3	10001-003	1	COVER, TOP
4	10002-002	1	PLATE, BOTTOM
5	99001-012	1	MOTOR, 1/6 HP, 42 FRAME
6	99002-007	1	PULLEY, MOTOR 16XL037
7	99007-001	4	SUCTION CUP, FOOT
8	98016-045	1	RECEPTICAL, SQ FL, AMP SERIES 3, 23-7 STD.
9	98000-016	1	SWITCH, PUSH / PULL, STOP
10	98000-017	1	CONTACT BLOCK ASSY, 1 X CLIP + 1 X NO + 1 X NC
11		4	SCREW, HEX HD, 1/4-20 X 3/4
12		10	SCREW, BTN HD 10-24 X 1/4
13		8	WASHER, LOCK, 1/4
14		10	NUT, PEM 10-24
15		4	NUT, HEX 8-32
16		4	WASHER, FLAT (SAE), 1/4
17		4	WASHER, LOCK #8
18	99003-050	1	BUSHING, 3/8 X 1/2 X 3/4
19	NOT SHOWN	4	NUT, HEX, 1/4-20 (MOTOR MTG.)
20	98007-002	1	CORD, INTERCONNECT, SJ30
21	98016-033	1	PLUG, AMP, SERIES 3, 23-7 STD (CONNECTS TO FEEDER – SJ30)
22	98016-013	1	PLUG, AMP, SERIES 3, 23-7 REV. (CONNECTS TO INK JET SYSTEM)
23	98016-014	2	BACKSHELL, PLASTIC, SIZE 23

FIG. 7



Sure-Feed
Engineering Inc

TRAILING ARM ASSEMBLY (Fig. 8)

ITEM	PART NO.	QTY.	DESCRIPTION
1	10011-002	2	ARM, TRAILER
2	10012-003	2	SPACER
3	10006-016	2	ROLLER
4	10004-007	2	WEIGHT
5		2	SCREW, PAN HD, 8-32 X 1 1/4
6		2	SCREW, PAN HD, 8-32 X 3/8
7		4	WASHER, LOCK INT. TOOTH #8

FIG. 8

