

SORT CONVEYOR

Parts Manual



SURE-FEED
engineering, inc.

3360 Scherer Drive St. Petersburg, FL 33716

PHONE: 727.571.3330 FAX: 727.571.3443 1-800-INSERTER

www.sure-feed.com

Sure-Feed
Engineering Inc

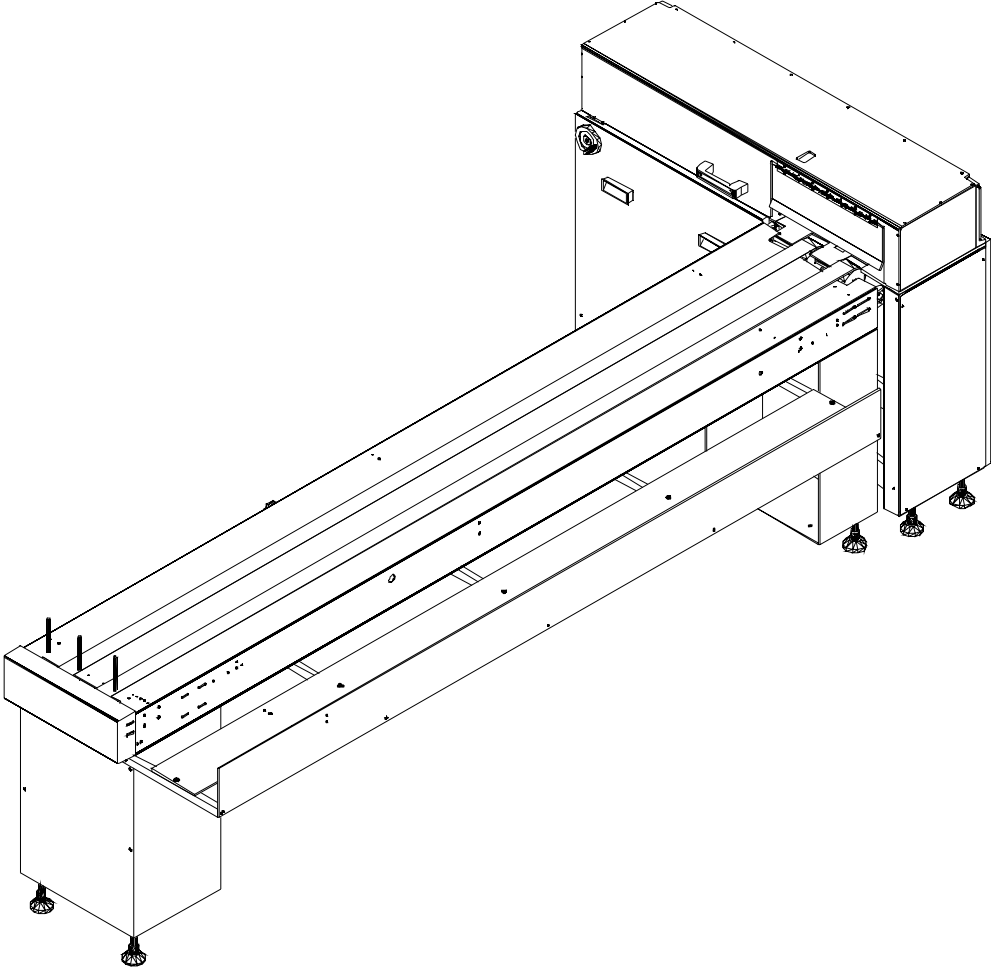


TABLE OF CONTENTS

SORT CONVEYOR

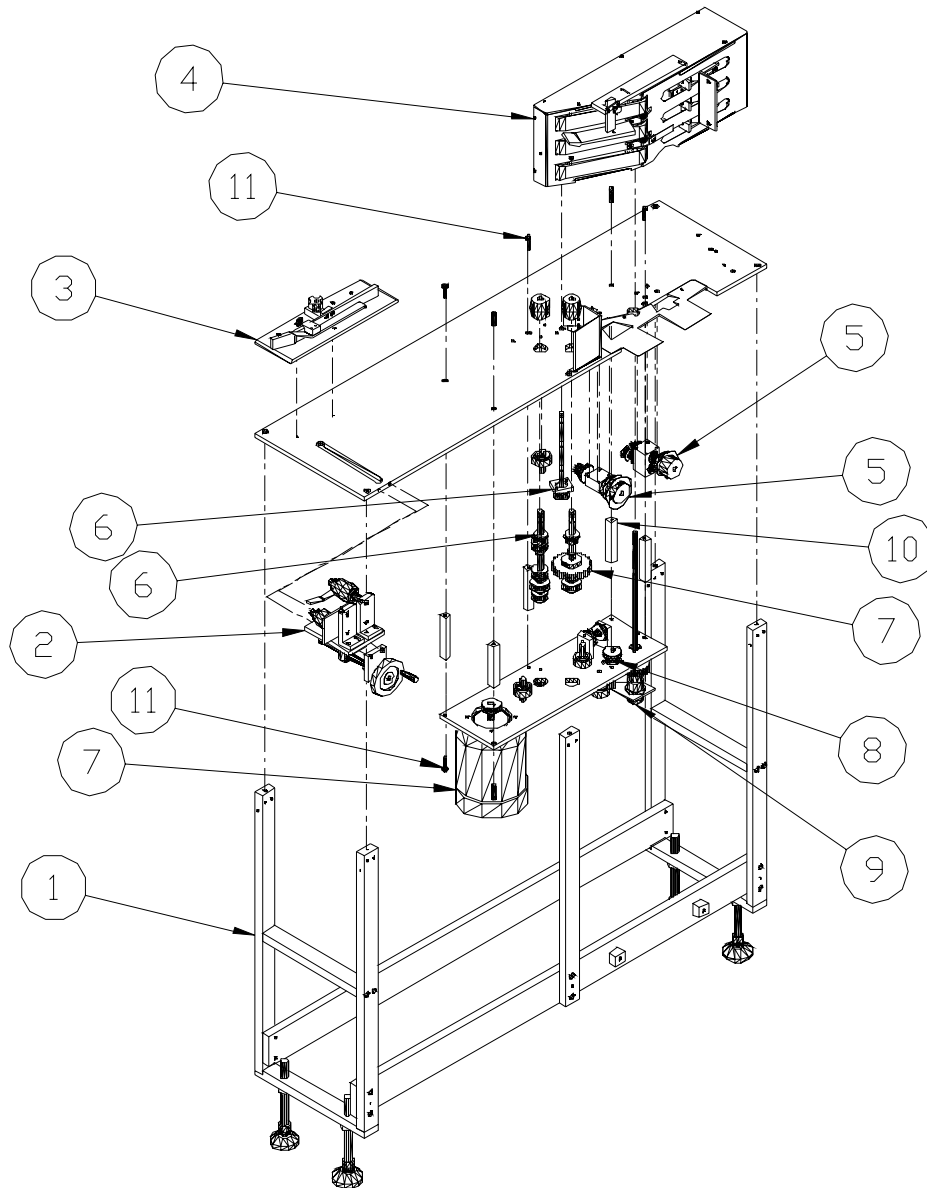
SORT CONVEYOR ASSEMBLY (Fig. 1).....	3
FRAME ASSEMBLY (Fig. 2)	5
ENTRY GUIDE ASSEMBLY (Fig. 3)	7
SKID PLATE / ENVELOPE SHROUD ASSEMBLY (Fig. 4)	9
GATE MECHANISM ENCLOSURE ASSEMBLY (Fig. 5).....	11
NIP SHAFT / PULLEY ASSEMBLY (Fig. 6).....	14
GATE MECHANISM ASSEMBLY (Fig. 7)	16
AUGER ASSEMBLY (Fig. 8)	18
NIP SHAFT DRIVE ASSEMBLY (Fig. 9).....	20
MOTOR / MAIN SHAFT DRIVE ASSEMBLY (Fig. 10)	22
AUGER DRIVE ASSEMBLY (Fig. 11).....	24
CLUTCH / DRIVE ASSEMBLY (Fig. 12).....	26
COVERS ASSEMBLY (Fig. 13)	28
COLLECTING CONVEYOR ASSEMBLY (Fig. 14).....	30
DRIVE SHAFT / MOTOR ASSEMBLY (Fig. 15).....	32
IDLER SHAFT ASSEMBLY (Fig. 16).....	34
ELECTRICAL ASSEMBLY	36
SORT CONVEYOR (Fig. 17).....	36
COLLECTING CONVEYOR (Fig. 18)	38

Sure-Feed
Engineering Inc

SORT CONVEYOR ASSEMBLY (Fig. 1)

ITEM	PART NO.	QTY.	DESCRIPTION
1	SEE FIG. 2	1	FRAME ASSEMBLY
2	SEE FIG. 3	1	ENTRY GUIDE ASSEMBLY
3	SEE FIG. 4	1	SKID PLATE / ENVELOPE SHROUD ASSEMBLY
4	SEE FIG. 5	1	GATE MECHANISM ENCLOSURE ASSEMBLY
5	SEE FIG. 8	1	AUGER ASSEMBLY
6	SEE FIG. 9	1	NIP SHAFT DRIVE ASSEMBLY
7	SEE FIG. 10	1	MOTOR / MAIN DRIVE SHAFT ASSEMBLY
8	SEE FIG. 11	1	AUGER DRIVE ASSEMBLY
9	SEE FIG. 12	1	CLUTCH / DRIVE ASSEMBLY
10	21012-001	5	SPACER, MOTOR PLATE
11		10	SCREW, SKT HD, 1/4 -20 X 3/4
12	SEE FIG 13	1	COVERS ASSEMBLY (NOT SHOWN)

FIG. 1

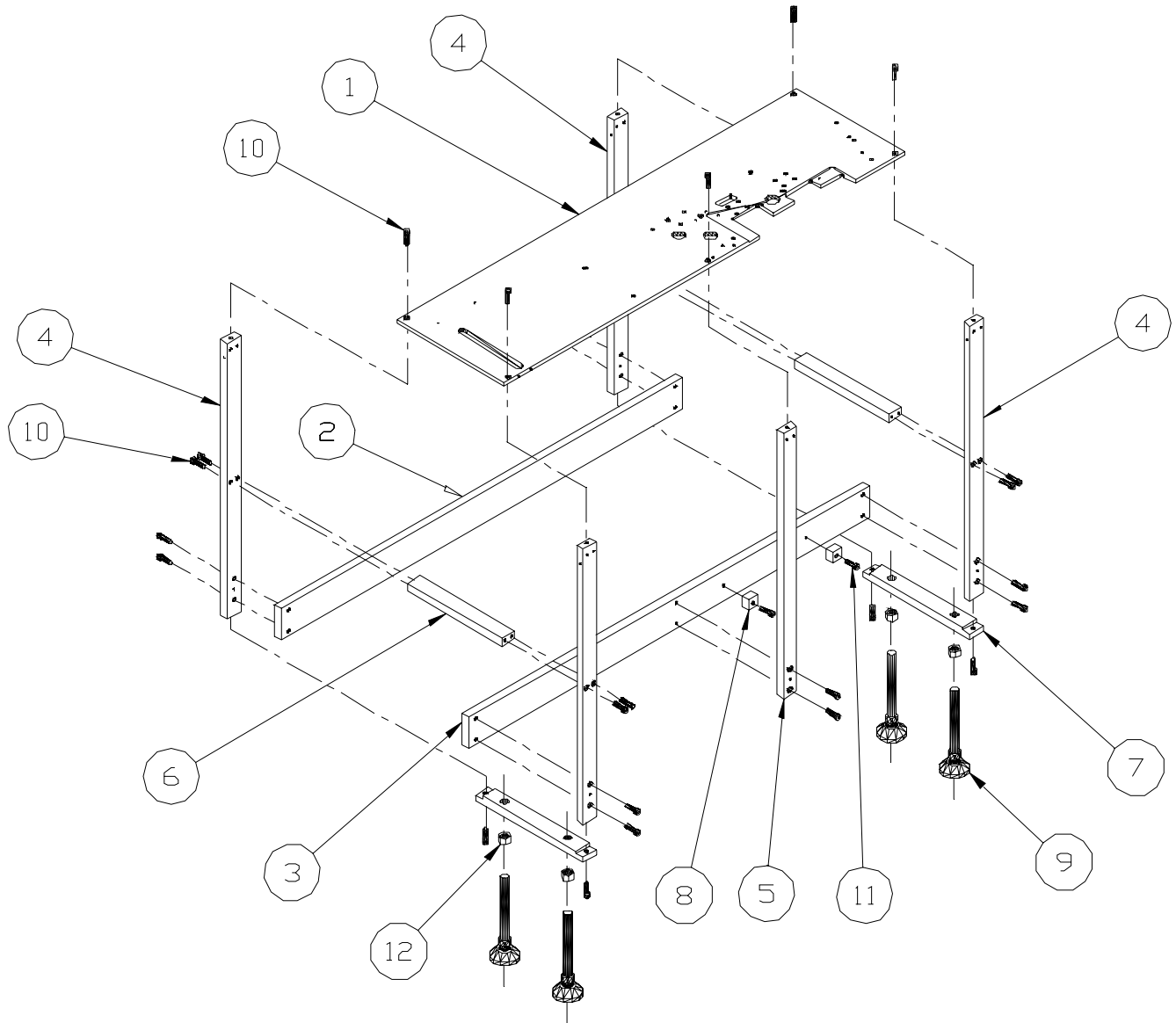


Sure-Feed
Engineering Inc

SORT CONVEYOR (Fig. 2)
FRAME ASSEMBLY

ITEM	PART NO.	QTY.	DESCRIPTION
1	21001-001	1	PLATE, DECK, SORT CONVEYOR
2	21003-004	1	CROSS BAR, SIDE
3	21003-003	1	CROSS BAR, SIDE W/ HOLES
4	21010-001	4	LEG, SUPPORT
5	21010-002	1	LEG, SIDE
6	21003-001	2	CROSS BAR, UPPER
7	21003-002	2	CROSS BAR, LOWER
8	21012-002	2	SPACER, CONVEYOR
9	99010-003	4	FOOT, 5/8-11
10		27	SCREW, SKT HD, 5/16-18 X 1
11		2	SCREW, SKT HD, 5/16-18 X 1-1/4
12		4	NUT, HEX, 5/8-11

FIG. 2

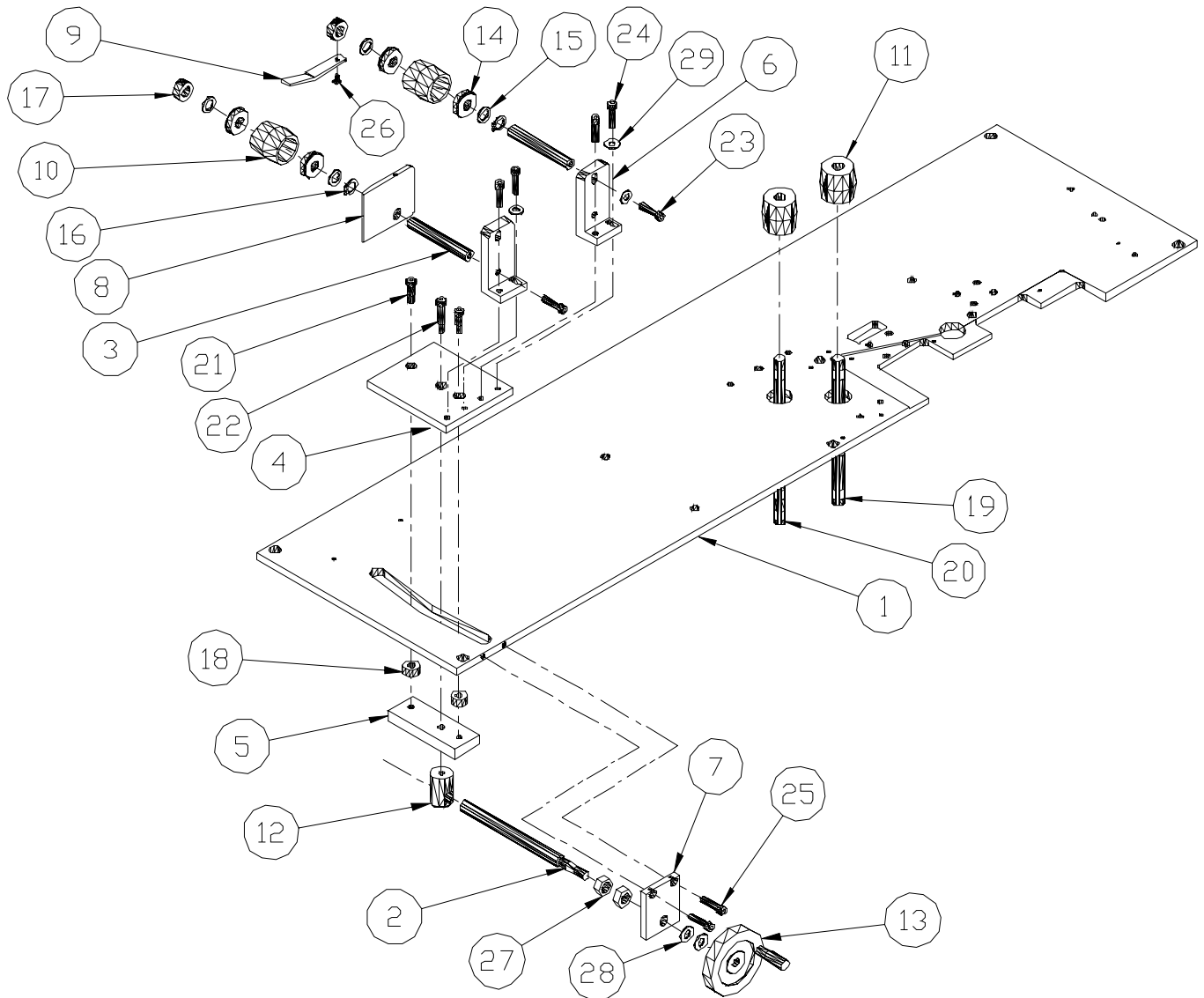


Sure-Feed
Engineering Inc

SORT CONVEYOR (Fig. 3)
ENTRY GUIDE ASSEMBLY

ITEM	PART NO.	QTY.	DESCRIPTION
1	21001-001	1	PLATE, DECK, SORT CONVEYOR (REF FIG. 2)
2	21004-024	1	SHAFT, IDLER ROLLER ADJ.
3	21004-009	2	SHAFT, IDLER PULLEY ADJ.
4	21011-010	1	PLATE, IDLER ROLLER ADJ.
5	21011-011	1	PLATE, NUT
6	21007-006	2	BLOCK, IDLER ROLLER ADJ.
7	21007-018	1	BLOCK, IDLER ROLLER ADJ.
8	21005-008	1	GUIDE, SIDE ENTRY
9	21005-007	1	GUIDE, ENTRY
10	21006-010	2	ROLLER, CROWN PULLEY, 7/8 BORE
11	10006-018	2	PULLEY, CROWNED
12	21007-019	1	BLOCK, ADJ
13	99004-008	1	HANDLE, W/ REVOLVING KNOB
14	99003-046	4	BEARING, SEALED, 1/2 ID X 7/8 OD
15	99003-018	4	WASHER, NYLON, 1/2 X 1/16
16	99022-004	2	SNAP RING, 1/2
17	99017-004	2	COLLER, SET, 1/2
18	21006-017	2	ROLLER, BELT GUIDE ADJ.
19	21004-003	1	SHAFT, MAIN
20	21004-004	1	SHAFT, INTERMEDIATE
21	99033-013	2	BOLT, SHOULDER, 5/16 X 1/2
22	99033-014	1	BOLT, SHOULDER, 5/16 X 1
23		2	SCREW, SKT HT, 1/4-20 X 1
24		4	SCREW, SKT HD, 1/4-20 X 3/4
25		2	SCREW, SKT HD, 1/4-20 X 1/2
26		1	SCREW, FLAT HD, 8-32 X 1/4
27		2	NUT, HEX, 1/2-13
28		2	WASHER, FLAT, 3/8
29		3	WASHER, FLAT, 1/2
30	99000-068	1	BELT, SORT CONVEYOR TWIST (NOT SHOWN)
31	99000-069	1	BELT, SORT CONVEYOR TWIST (NOT SHOWN)

FIG. 3

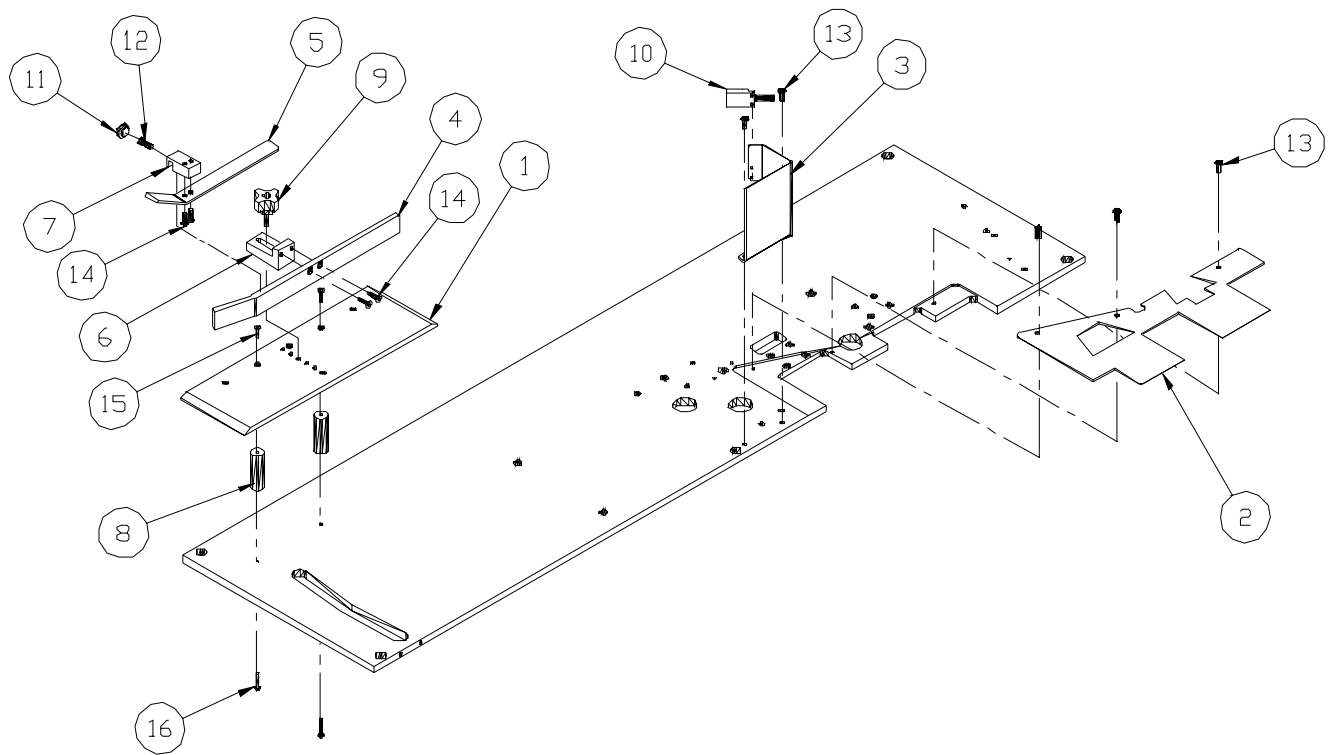


Sure-Feed
Engineering Inc

SORT CONVEYOR (Fig. 4)
SKID PLATE / ENVELOPE SHROUD ASSEMBLY

ITEM	PART NO.	QTY.	DESCRIPTION
1	21011-009	1	PLATE, SKID
2	21001-005	1	PLATE, TOP
3	21005-013	1	SHROUD, ENVELOPE KICKBACK
4	12005-009	1	GUIDE, SIDE
5	21005-023	1	GUIDE, INFEEED OVERHEAD
6	12007-008	1	BRACKET, SIDE GUIDE MTG.
7	21009-007	1	BRACKET, OVERHEAD GUIDE MGT.
8	21012-005	2	STANDOFF, SKID PLATE
9	99004-014	1	KNOB, 10-24 X 3/4 STUD
10	98009-001	1	SENSOR, BANNER, AN7
11		1	THUMB CAP, KNURLED, #10
12		1	SCREW, SKT HD, 10-24 X 1/2
13		5	SCREW, BUTTON HD, 10-24 X 3/8
14		4	SCREW, FLAT HD, 8-32 X 1/2
15		2	SCREW, FLAT HD, 6-32 X 1/2
16		2	SCREW, SKT HD, 6-32 X 5/8

FIG. 4



Sure-Feed
Engineering Inc

SORT CONVEYOR (Fig. 5)
GATE MECHANISM ENCLOSURE ASSEMBLY

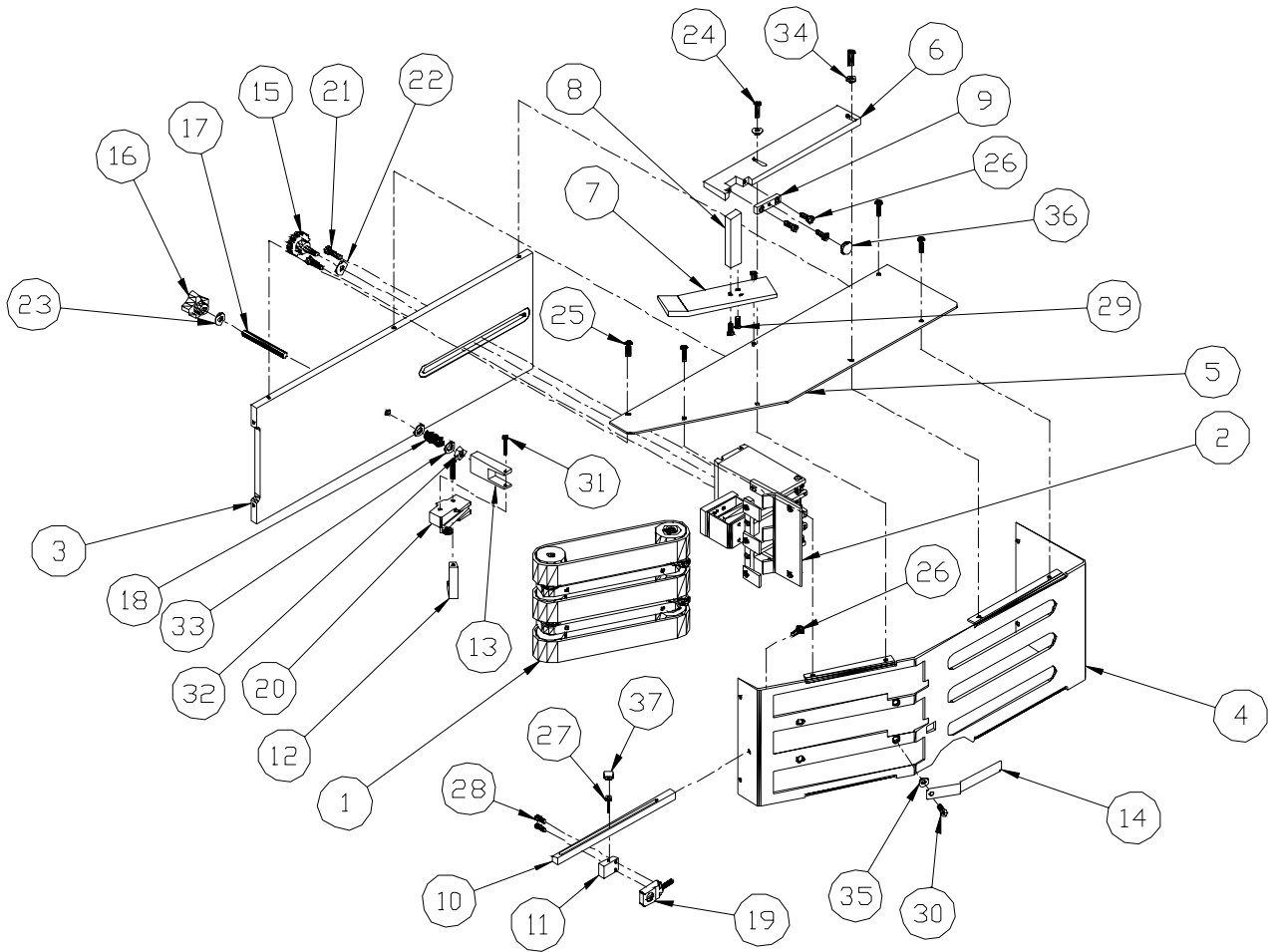
ITEM	PART NO.	QTY.	DESCRIPTION
1	(SEE FIG. 6)	1	NIP SHAFT / PULLEY ASSEMBLY
2	(SEE FIG. 7)	1	GATE MECHANISM ASSEMBLY
3	21011-003	1	PLATE, GATE MTG.
4	21005-004	1	GUIDE, ENVELOPE SIDE GUIDE
5	21013-005	1	COVER, GATE MECHANISM
6	21007-017	1	BLOCK, GUIDE MTG (25 DEGREES)
7	21005-016	1	GUIDE, OVERHEAD
8	21008-013	1	BAR, OVERHEAD GUIDE ADJ.
9	21011-008	1	PLATE, CLAMP
10	21008-007	1	BAR, SENSOR MTG.
11	21009-003	1	BLOCK, SENSOR MTG.
12	21009-005	1	BRACKET, LIMIT SWITCH MTG.
13	21009-006	1	BRACKET, CLEVIS, MICROSWITCH
14	21005-020	1	GUIDE, LIMIT SWITCH PRESSURE
15	99004-004	1	KNOB, 1/4-20
16	99004-001	1	KNOB, FEMALE, 5/16-24
17	99006-027	1	STUD, 5/16-24 X 2-3/4
18	99005-011	1	SPRING, COMPRESSION, .041 X .36 X 1.5
19	98009-001	1	SENSOR, BANNER, AN7
20	98000-020	1	SWITCH, LIMIT W/ ROLLER
21	99033-004	2	BOLT, SHOULDER, 1/4 X 3/8
22	99003-015	1	WASHER, NYLON, 5/16 X 1/16
23	99003-013	1	WASHER, NYLON, 1/4 X 1/16
24		2	SCREW, BUTTON HD, 10-24X 3/4
25		5	SCREW, BUTTON HD, 10-24 X 1/2
26		4	SCREW, SKT HD, 10-24 X 1/2
27		1	SCREW, SKT HD, 8-32 X 3/4
28		2	SCREW, SKT HD, 8-32 X 1/2
29		2	SCREW, FLAT HD, 8-32 X 1/2

Sure-Feed
Engineering Inc

SORT CONVEYOR (Fig. 5)
GATE MECHANISM / PULLEY ENCLOSURE ASSEMBLY

ITEM	PART NO.	QTY.	DESCRIPTION
30		1	SCREW, BUTTON HD, 8-32 X 1/2
31		2	SCREW, PAN HD, 6-32 X 1
32		1	NUT, HEX, 5/16-24
33		2	WASHER, FLAT, 5/16
34		2	WASHER, FLAT, #10
35		1	WASHER, FLAT, #8
36		1	CAP, KNURLED, #10
37		1	CAP, KNURLED, #8

FIG. 5

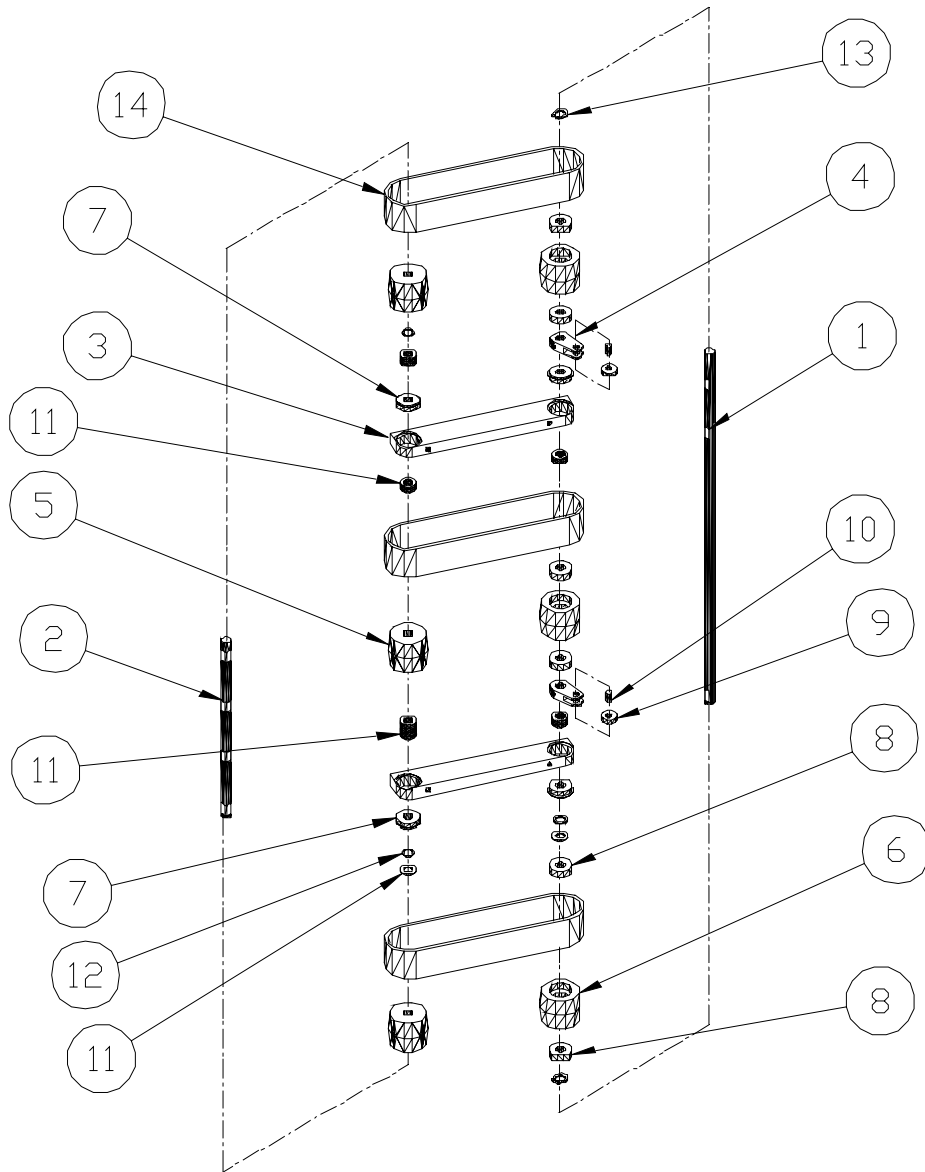


Sure-Feed
Engineering Inc

**SORT CONVEYOR (Fig. 6)
 NIP SHAFT / PULLEY ASSEMBLY**

ITEM	PART NO.	QTY.	DESCRIPTION
1	21004-022	1	SHAFT, CLUTCH, (IDLER NIP)
2	21004-021	1	SHAFT, DRIVE NIP
3	21007-007	2	BLOCK, BEARING, NIP SHAFT
4	21005-014	2	GUIDE, ENVELOPE THUMP
5	21005-004	3	PULLEY, CROWNED, 3/8 BORE
6	21006-016	3	PULLEY, NIP IDLER, 7/8 BORE
7	99003-020	4	BEARING, SEALED W/ SNAP RING, 3/8 X 7/8
8	99003-008	6	BEARING, SEALED, 3/8 X 7/8
9	99003-002	2	BEARING, SEALED, 1/4 X 5/8
10	21004-023	2	SHAFT, BEARING
11	99003-017	32	WASHER, NYLON, 3/8 X 1/16
12	99003-016	3	WASHER, NYLON, 3/8 X 1/32
13	99022-003	2	SNAP RING, 3/8
14	99000-004	3	BELT, RED GUM

FIG. 6



**SORT CONVEYOR (Fig. 7)
 GATE MECHANISM ASSEMBLY**

ITEM	PART NO.	QTY.	DESCRIPTION
1	21009-001	1	BRACKET, ACTUATOR MTG.
2	21007-008	1	BLOCK, ACTUATOR ADJ.
3	21005-002	1	GUIDE, GATE BACKSTOP
4	21008-001	2	BAR, PAPER GUIDE MTG.
5	21007-010	1	BLOCK, ACTUATOR MTG.
6	21008-002	2	BAR, PIVOT (LONG)
7	21008-003	1	BAR, PIVOT (SHORT)
8	21007-009	1	BLOCK, PAPER GUIDE MTG.
9	21005-003	3	GUIDE, GATE
10	21008-004	1	BAR, PIVOT
11	21004-012	1	SHAFT, GATE PIVOT
12	99014-003	1	ACTUATOR, SOLENOID, 24V DC
13	99017-002	2	COLLAR, SET, 1/4
14	99003-033	2	BUSHING, 1/4 X 3/8 X 1/4
15	99005-010	1	SPRING, COMPRESSION
16	99006-018	1	PIN, SPRING, 1/8 X 3/4
17	99006-019	1	PIN, SPRING, 1/8 X 3/8
18		2	SCREW, SKT HD, 1/4-20 X 1/2
19		14	SCREW, SKT HD, 8-32 X 1/2
20		5	SCREW, FLAT HD, 8-32 X 1/4
21		3	SCREW, SKT HD, 6-32 X 3/8
22		1	WASHER, FLAT, 3/8

Sure-Feed
Engineering Inc

SORT CONVEYOR (Fig. 8)
AUGER ASSEMBLY

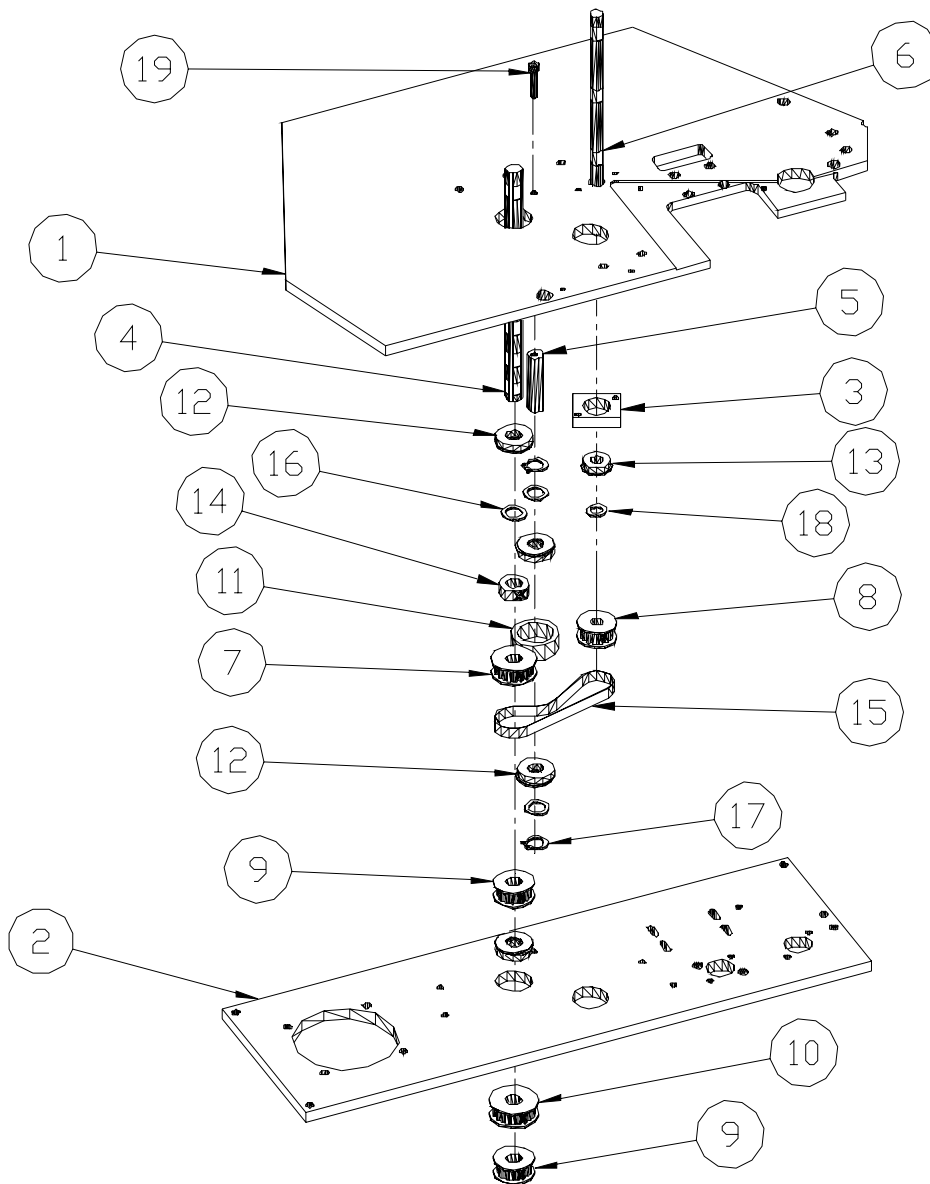
ITEM	PART NO.	QTY.	DESCRIPTION
1	21001-001	1	PLATE, DECK, SORT CONVEYOR (REF FIG. 2)
2	21007-013	1	BLOCK, BEARING, SECONDARY AUGER
3	21007-005	1	BLOCK, BEARING, AUGER
4	21005-001	1	AUGER, PAPER SORTER
5	21005-010	1	AUGER, SECONDARY
6	21004-025	1	SHAFT, SECONDARY SCREW (UPPER)
7	21004-015	1	SHAFT, SPUR GEAR
8	21004-013	1	SHAFT, DOUBLE SCREW
9	99021-002	2	GEAR, SPUR
10	99002-051	1	PULLEY, 12XL037, 5/16 BORE (ALUM)
11	99002-050	1	PULLEY, 12XL037, 5/16 BORE (ALUM) (NO FLANGES)
12	21006-011	1	PULLEY, DRIVE, GROOVED
13	99000-054	1	BELT, TIMING, 180XL037
14	21014-002	1	BELT, EAGLE
15	99003-008	6	BEARING, SEALED, 3/8 X 7/8
16	99022-003	6	SNAP RING, 3/8
17	99003-017	14	WASHER, NYLON, 3/8 X 1/16
18		8	SCREW, SKT HD, 10-24 X 1/2

Sure-Feed
Engineering Inc

**SORT CONVEYOR (Fig. 9)
 NIP SHAFT DRIVE ASSEMBLY**

ITEM	PART NO.	QTY.	DESCRIPTION
1	21001-001	1	PLATE, DECK, SORT CONVEYOR (REF FIG. 2)
2	21011-001	1	PLATE, MOTOR MTG.
3	21007-004	1	BLOCK, BEARING
4	21004-004	1	SHAFT, INTERMEDIATE
5	18004-031	1	SHAFT, STUB IDLER
6	21004-021	1	SHAFT, DRIVE NIP (REF. FIG. 6)
7	99002-046	1	PULLEY, 18XL037, 1/2 BORE, NO HUB
8	99002-030	1	PULLEY, 16XL037, 3/8 BORE, NO HUB
9	99002-007	2	PULLEY, 16XL037, 1/2 BORE, NO HUB
10	99002-003	1	PULLEY, 20XL037, 1/2 BORE, NO HUB
11	18006-009	1	PULLEY, IDLER
12	99003-007	4	BEARING, SEALED, 1/2 X 1-1/8
13	99003-009	1	BEARING, SEALED, 3/8 X 7/8
14	99017-004	1	COLLER, SET, 1/2
15	99000-041	1	BELT, TIMING, 100XL037
16	99003-018	3	WASHER, NYLON, 1/2 X 1/16
17	99022-004	2	SNAP RING, 1/2
18	99022-003	1	SNAP RING, 3/8
19		1	SCREW, SKT HD, 10-24 X 3/4

FIG. 9

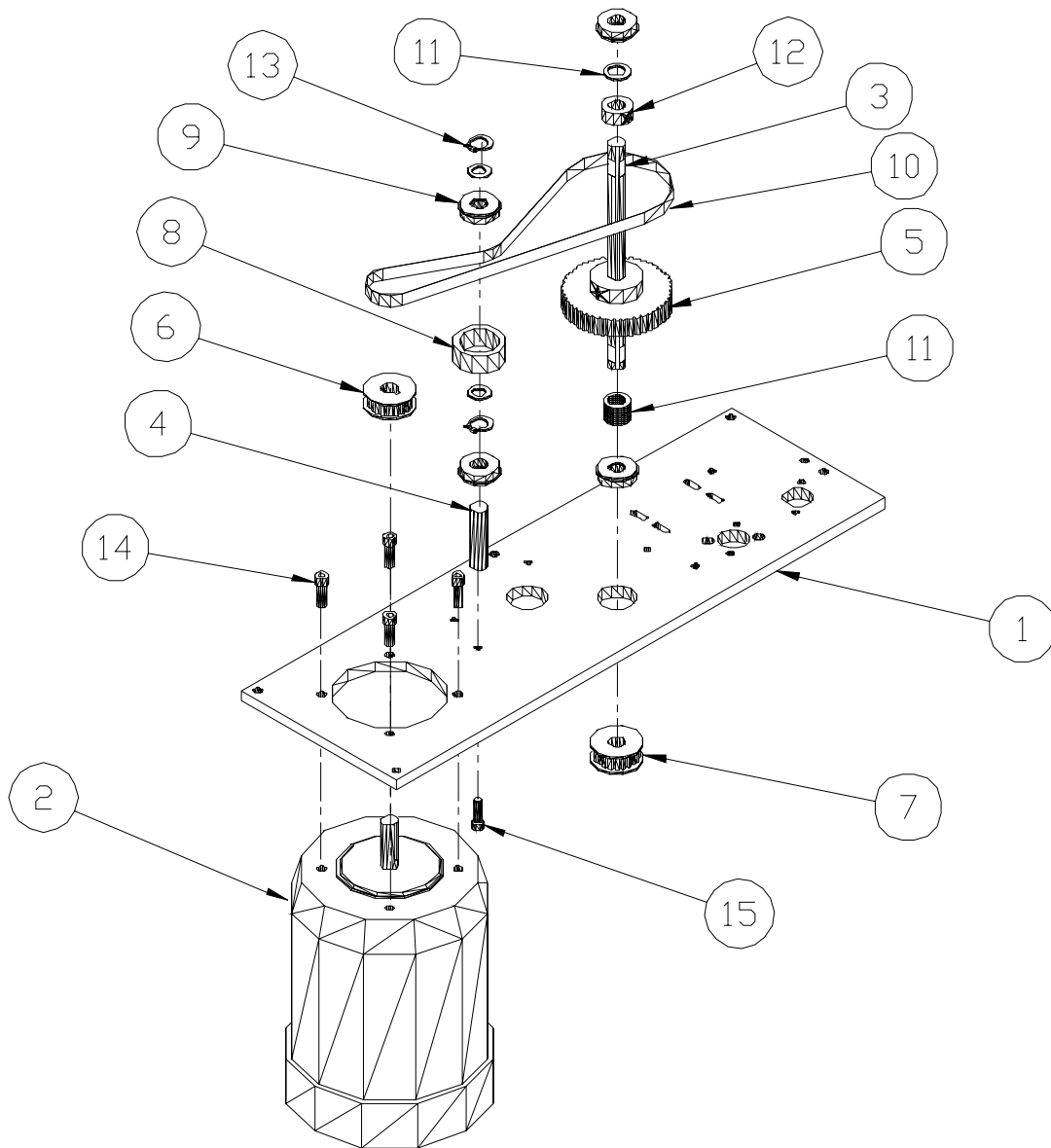


Sure-Feed
Engineering Inc

**SORT CONVEYOR (Fig. 10)
 MOTOR / MAIN SHAFT DRIVE ASSEMBLY**

ITEM	PART NO.	QTY.	DESCRIPTION
1	21011-001	1	PLATE, MOTOR MTG. (REF. FIG. 9)
1	99001-007	1	MOTOR, 1/4 HP, 48 F
3	21004-003	1	SHAFT, MAIN
4	18004-031	1	SHAFT, STUB IDLER
5	99002-025	1	PULLEY, 48XL037, 1/2 BORE, W/ HUB
6	21006-001	1	PULLEY, 20XL037, 1/2 BORE, W/ HUB AND KEYWAY
7	99002-003	1	PULLEY, 20XL037, 1/2 BORE, W/O HUB
8	18006-009	1	PULLEY, IDLER
9	99003-007	4	BEARING, SEALED, 1/2 X 1-1/8
10	99000-024	1	BELT, TIMING, 230XL037
11	99003-018	13	WASHER, NYLON, 1/2 X 1/16
12	99017-004	1	COLLER, SET, 1/2
13	99022-004	2	SNAP RING, 1/2
14		4	SCREW, SKT HD, 1/4-20 X 1
15		1	SCREW, SKT HD, 10-24 X 3/4

FIG. 10

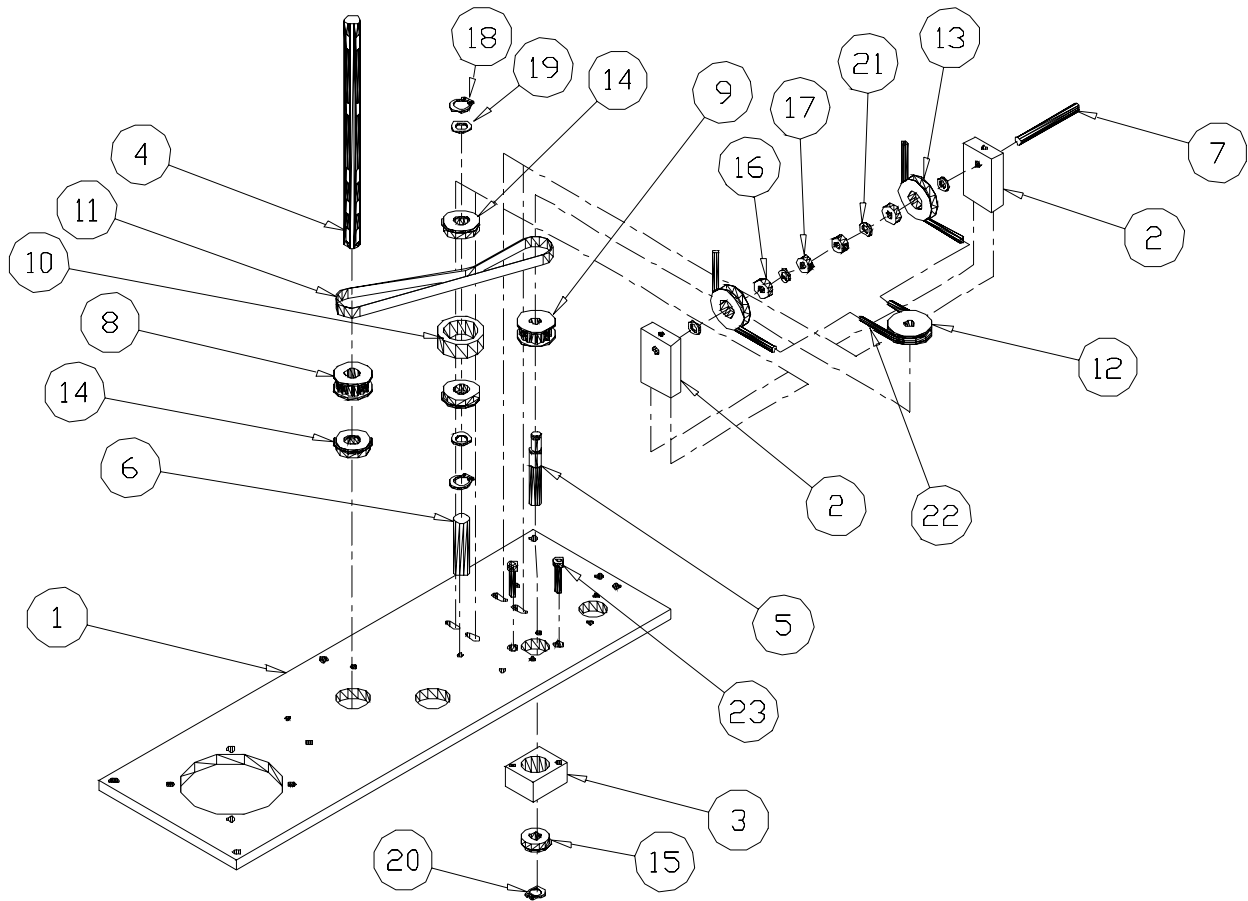


Sure-Feed
Engineering Inc

**SORT CONVEYOR (Fig. 11)
 AUGER DRIVE ASSEMBLY**

ITEM	PART NO.	QTY.	DESCRIPTION
1	21011-001	1	PLATE, MOTOR MTG. (REF. FIG. 9)
2	21007-001	2	BLOCK, IDLER PULLEY
3	21007-003	1	BLOCK, BEARING
4	21004-004	1	SHAFT, INTERMEDIATE (REF. FIG. 9)
5	21004-005	1	SHAFT, SCREW TRANSFER
6	18004-031	1	SHAFT, STUB IDLER
7	21004-006	1	SHAFT, SCREW TENSIONER
8	99002-007	1	PULLEY, 16XL037, 1/2 BORE W/O HUB
9	99002-030	1	PULLEY, 16XL037, 3/8 BORE W/O HUB
10	18006-009	1	PULLEY, IDLER
11	99000-027	1	BELT, TIMING, 160XL037
12	21006-011	1	PULLEY, DRIVE, GROOVED
13	21006-012	2	PULLEY, IDLER, GROOVED
14	99003-007	3	BEARING, SEALED, 1/2 X 1-1/8
15	99003-009	1	BEARING, SEALED, 3/8 X 7/8
16	99003-002	2	BEARING, SEALED, 1/4 X 5/8
17	99017-002	2	COLLAR, SET, 1/4
18	99022-004	2	SNAP RING, 1/2
19	99003-018	2	WASHER, NYLON, 1/2 X 1/16
20	99022-003	1	SNAP RING, 3/8
21	99003-004	4	WASHER, NYLON, 1/4 X 1/16
22	21014-002	1	BELT, EAGLE
23		2	SCREW, SKT HD, 10-24 X 3/4

FIG. 11

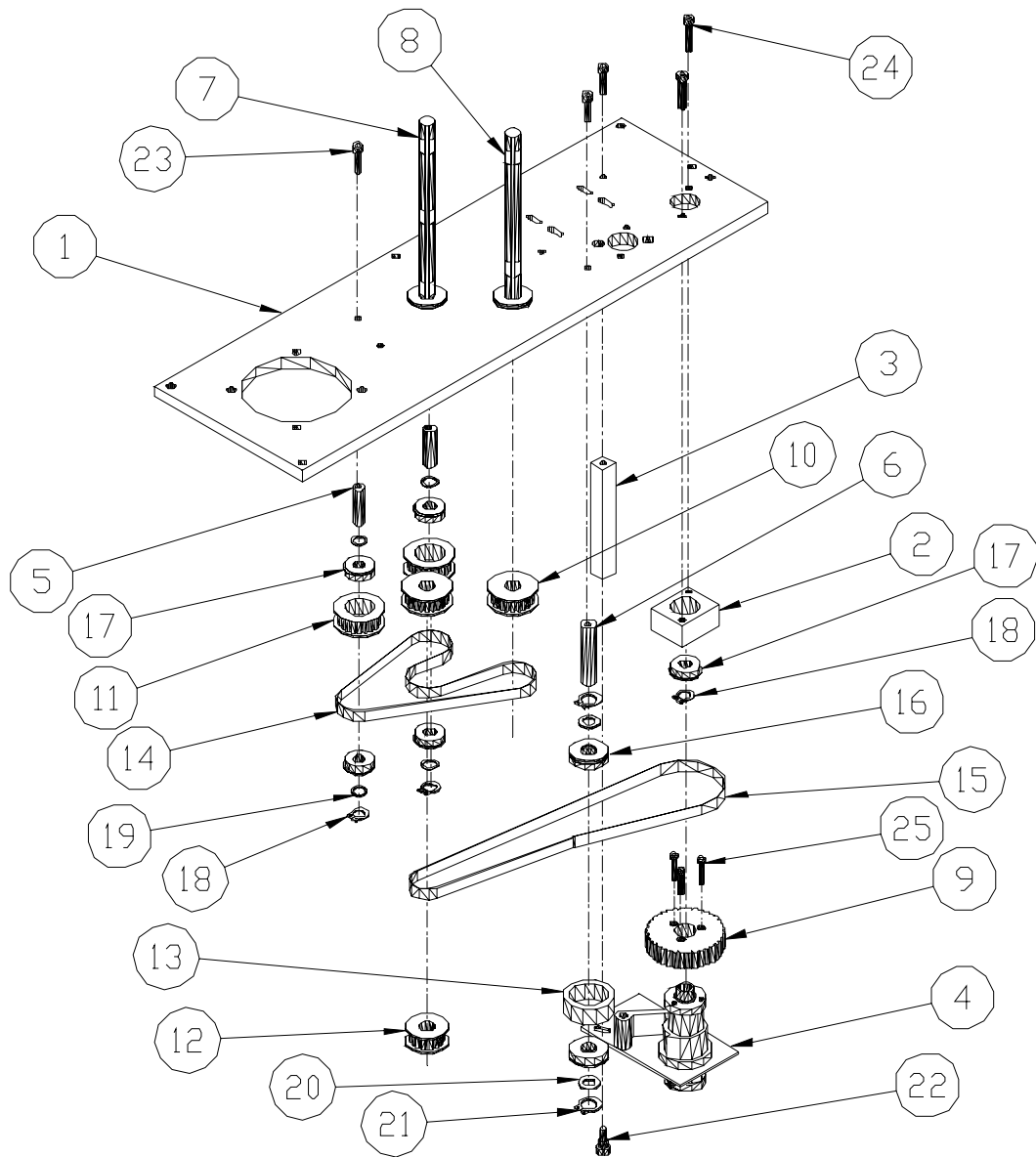


Sure-Feed
Engineering Inc

**SORT CONVEYOR (Fig. 12)
 CLUTCH / DRIVE ASSEMBLY**

ITEM	PART NO.	QTY.	DESCRIPTION
1	21011-001	1	PLATE, MOTOR MTG. (REF. FIG. 9)
1	21007-003	1	BLOCK, BEARING
3	21012-003	1	STANDOFF, CLUTCH STOP
4	99008-003	1	CLUTCH, SINGLE POS, 24V DC, CCW
5	21004-002	2	SHAFT, IDLER, 3/8 ECCENTRIC
6	18004-031	1	SHAFT, STUB IDLER
7	21004-003	1	SHAFT, MAIN (REF. FIG. 10)
8	21004-004	1	SHAFT, INTERMEDIATE (REF. FIG. 9)
9	21006-015	1	PULLEY, CLUTCH, 36XL037
10	99002-003	2	PULLEY, 20XL037, 1/2 BORE W/O HUB
11	18006-024	2	PULLEY, 20XL037, 7/8 BORE
12	99002-007	1	PULLEY, 16XL037, 1/2 BORE W/O HUB
13	18006-009	1	PULLEY, IDLER
14	99000-066	1	BELT, TIMING, DOUBLE, 190XL037
15	99000-024	1	BELT, TIMING, 230XL037
16	99003-007	2	BEARING, SEALED, 1/2 X 1-1/8
17	99003-009	5	BEARING, SEALED, 3/8 X 7/8
18	99022-003	3	SNAP RING, 3/8
19	99003-017	4	WASHER, NYLON, 3/8 X 1/16
20	99003-018	2	WASHER, NYLON, 1/2 X 1/16
21	99022-004	2	SNAP RING, 1/2
22	99033-002	1	BOLT, SHOULDER, 1/4 X 5/8
23		4	SCREW, SKT HD, 10-24 X 3/4
24		2	SCREW, SKT HD, 10-24 X 1
25		3	SCREW, SKT HD, 6-32 X 3/4

FIG. 12

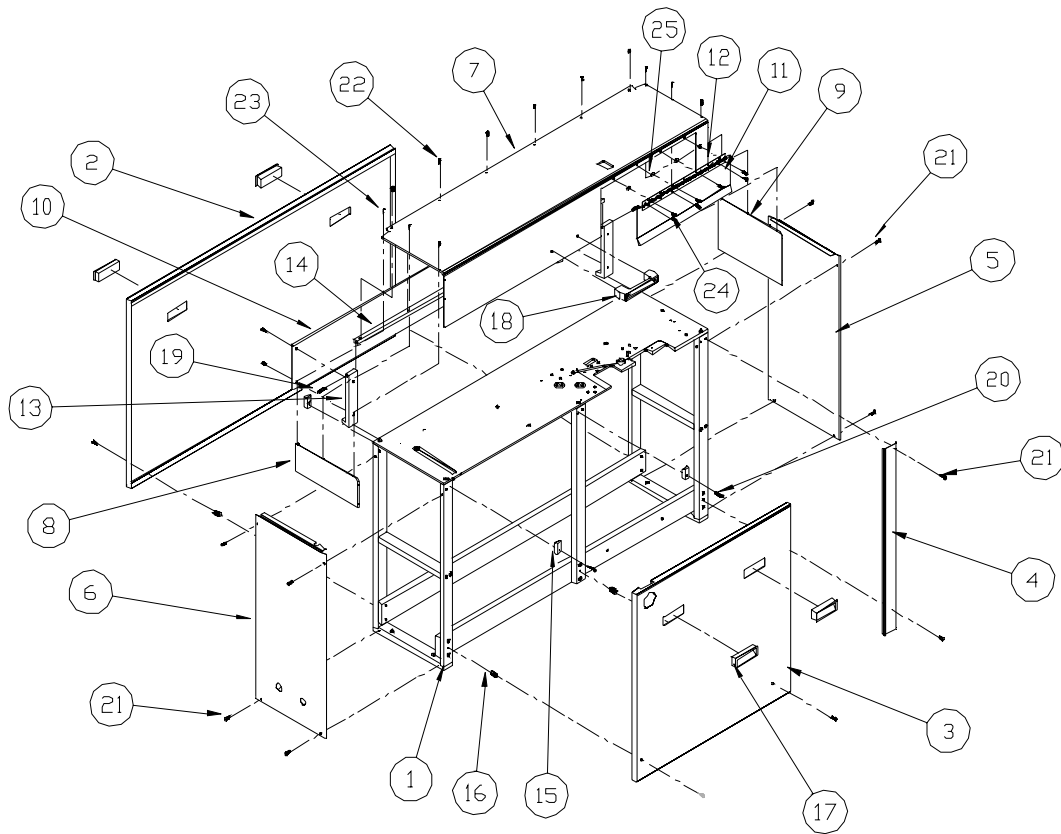


Sure-Feed
Engineering Inc

SORT CONVEYOR (Fig. 12)
COVERS ASSEMBLY

ITEM	PART NO.	QTY.	DESCRIPTION
1	REF. FIG. 1	1	FRAME ASSEMBLY
1	21013-001	1	COVER, SIDE, REAR
3	21013-002	1	COVER, SIDE, FRONT
4	21013-006	1	COVER, SIDE, RH
5	21013-004	1	COVER, END
6	21013-003	1	COVER, END W/ HOLES
7	21013-017	1	GUARD, TOP, LEXAN
8	21013-018	1	GUARD, LEXAN, INFEED
9	21013-019	1	GUARD, LEXAN, DISCHARGE
10	21013-008	1	COVER, SIDE, LEXAN
11	21013-020	1	GUARD, DOOR, LEXAN
12	21013-021	1	HINGE, DOOR
13	21007-012	2	BLOCK, COVER SUPPORT
14	21008-006	1	BAR, COVER PIVOT
15	18007-042	4	BLOCK, COVER MTG.
16	18012-006	4	STANDOFF, COVER
17	99012-002	4	HANDLE, POCKET PULL
18	99012-001	1	HANDLE, DOOR
19	99006-024	2	PIN, STUD, 5/16-24 X 1-1/8
20		2	SCREW, SKT HD, 10-24 X 1
21		14	SCREW, BUTTON HD, 10-24 X 1/2
22		10	SCREW, BUTTON HD, 8-32 X 1/2
23		10	SCREW, BUTTON, HD, 4-40 X 1/2
24		8	SCREW, PAN HD, 8-32 X 1/4
25		8	HUT, HEX, 8-32

FIG. 13

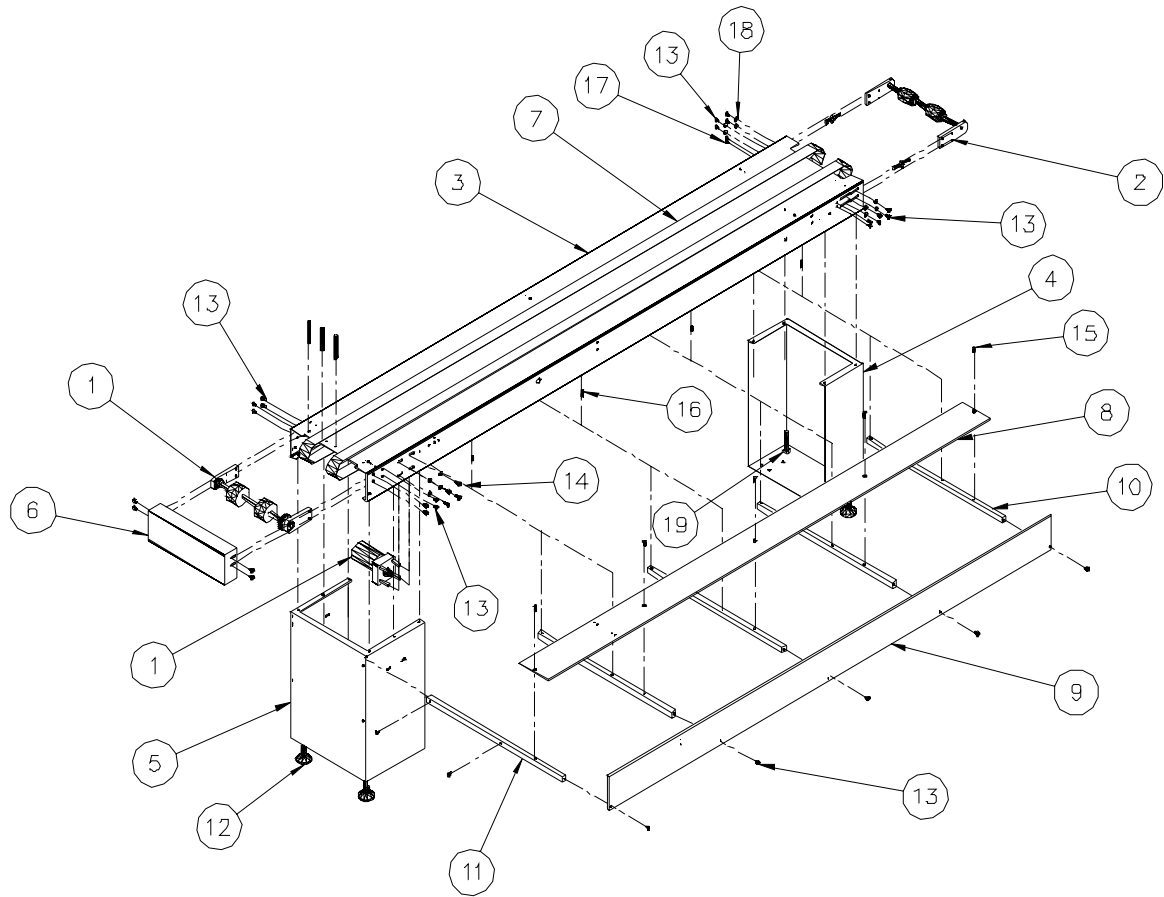


Sure-Feed
Engineering Inc

COLLECTING CONVEYOR ASSEMBLY (Fig. 14)

ITEM	PART NO.	QTY.	DESCRIPTION
1	(SEE FIG. 15)	1	DRIVE SHAFT / MOTOR ASSEMBLY
2	(SEE FIG. 16)	1	IDLER SHAFT ASSEMBLY
3	12000-007	1	SIDE FRAME, 9' CONVEYOR
4	12010-004	1	LEG, DRIVE, 30"
5	12010-003	1	LEG, IDLE, 30"
6	12011-006	1	END CAP, IDLE
7	99000-071	3	BELT, ENDLESS, 18' - 3/8" X 2-1/4" W
8	12008-006	1	BAR, TRAY SLIDE
9	12008-007	1	BAR, TRAY SLIDE (SIDE)
10	12008-004	4	BAR, TRAY SLIDE SUPPORT
11	12008-005	1	BAR, TRAY SLIDE SUPPORT (END)
12	99010-001	4	FOOT, ADJUSTING
13		31	SCREW, BUTTON HD, 1/4-20 X 1/2
14		4	SCREW, BUTTON HD, 1/4-20 X 3/4
15		5	SCREW, FLAT HD, 1/4-20 X 1/2
16		8	SCREW, SKT HD, 1/4-20 X 1/2
17		4	SCREW, BUTTON HD, 10-24 X 1/2
18		12	WASHER, FLAT, 1/4
19		4	NUT, HEX HD, 5/8-11

FIG. 14

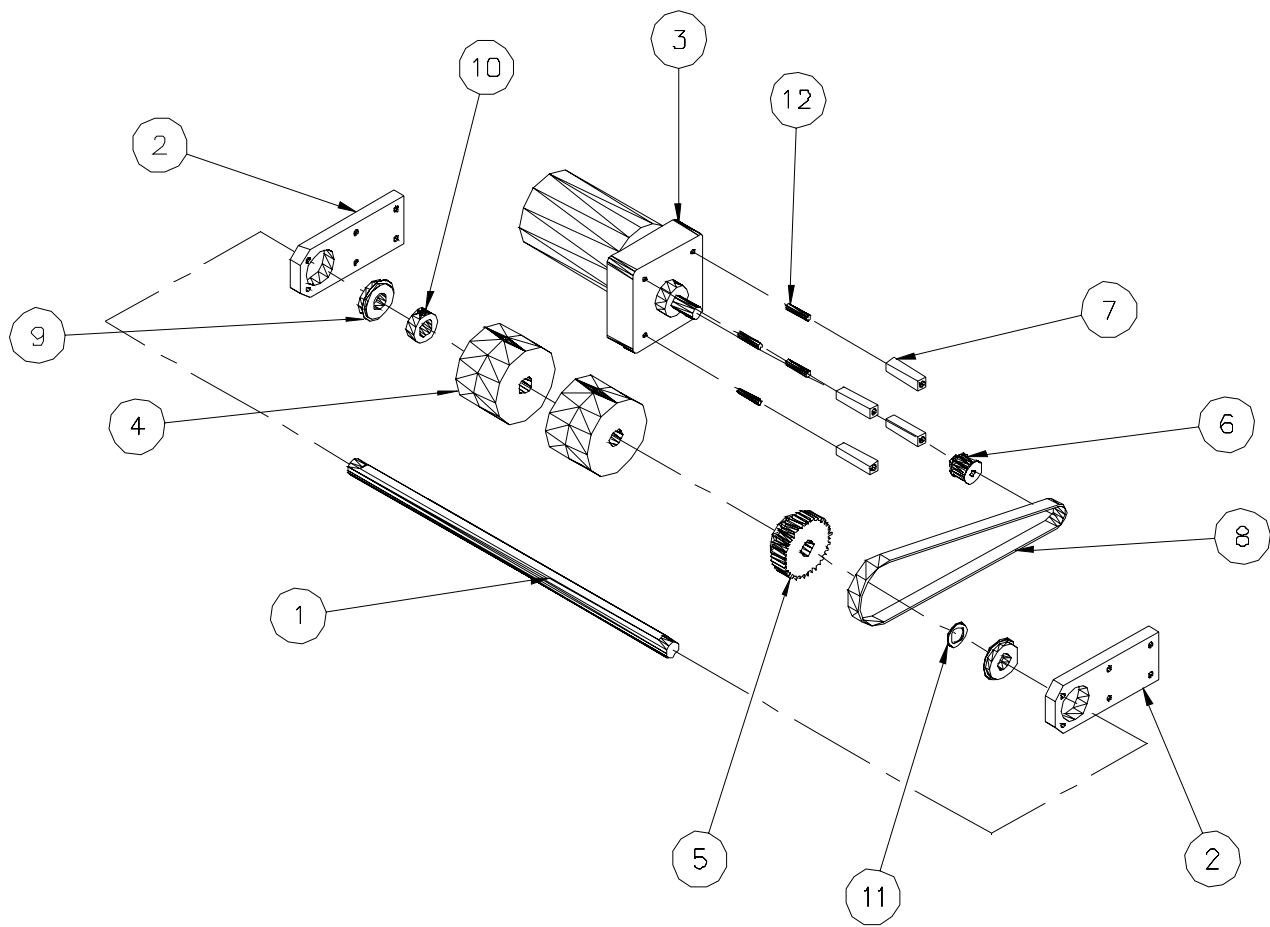


Sure-Feed
Engineering Inc

**COLLECTING CONVEYOR (Fig. 15)
 DRIVE SHAFT / MOTOR ASSEMBLY**

ITEM	PART NO.	QTY.	DESCRIPTION
1	12004-003	1	SHAFT, DRIVE, CONVEYOR
2	12007-001	2	BLOCK, BEARING
3	99001-009	1	MOTOR, 32 RPM
4	12006-010	2	PULLEY, CROWNED, 2-1/4" WIDE
5	99002-033	1	PULLEY, 36XL037
6	99002-008	1	PULLEY, 12XL037
7	12012-001	4	STANDOFF, MOTOR
8	99000-030	1	BELT, 220XL037
9	99003-006	2	BEARING, SEALED, 5/8 X 1-3/8
10	99017-005	1	COLLAR, SET, 5/8
11	99003-021	1	WASHER, NYLON, 5/8 X 1/16
12		4	SCREW, SET, 10-32 X 1

FIG. 15

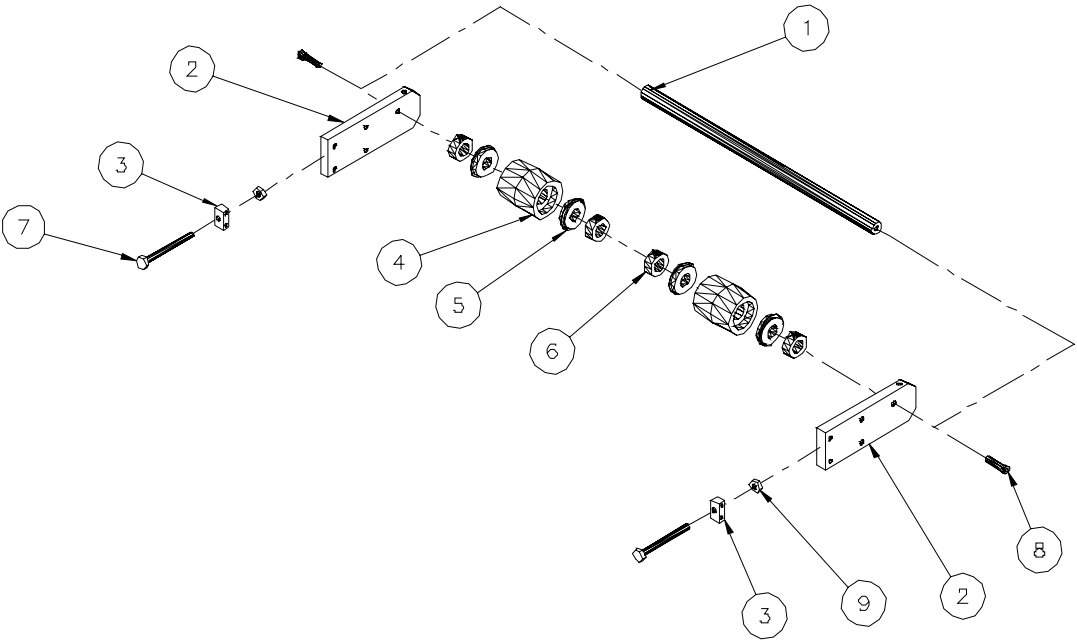


Sure-Feed
Engineering Inc

COLLECTING CONVEYOR (Fig. 16)
IDLER SHAFT ASSEMBLY

ITEM	PART NO.	QTY.	DESCRIPTION
1	12004-010	1	SHAFT, FIXED IDLER
2	12007-014	2	BLOCK, FIXED IDLER SHAFT
3	12006-002	2	BLOCK, SHAFT ADJ
4	12006-009	2	PULLEY, 2" DIAM. X 2-1/4" WIDE
5	99003-006	4	BEARING, SEALED, 5/8 X 1-3/8
6	99017-005	4	COLLAR, SET, 5/8
7		2	BOLT, HEX HD, 1/4-20 X 3
8		2	SCREW, SKT HD, 14-20 X 1
9		2	NUT, HEX, 1/4-20

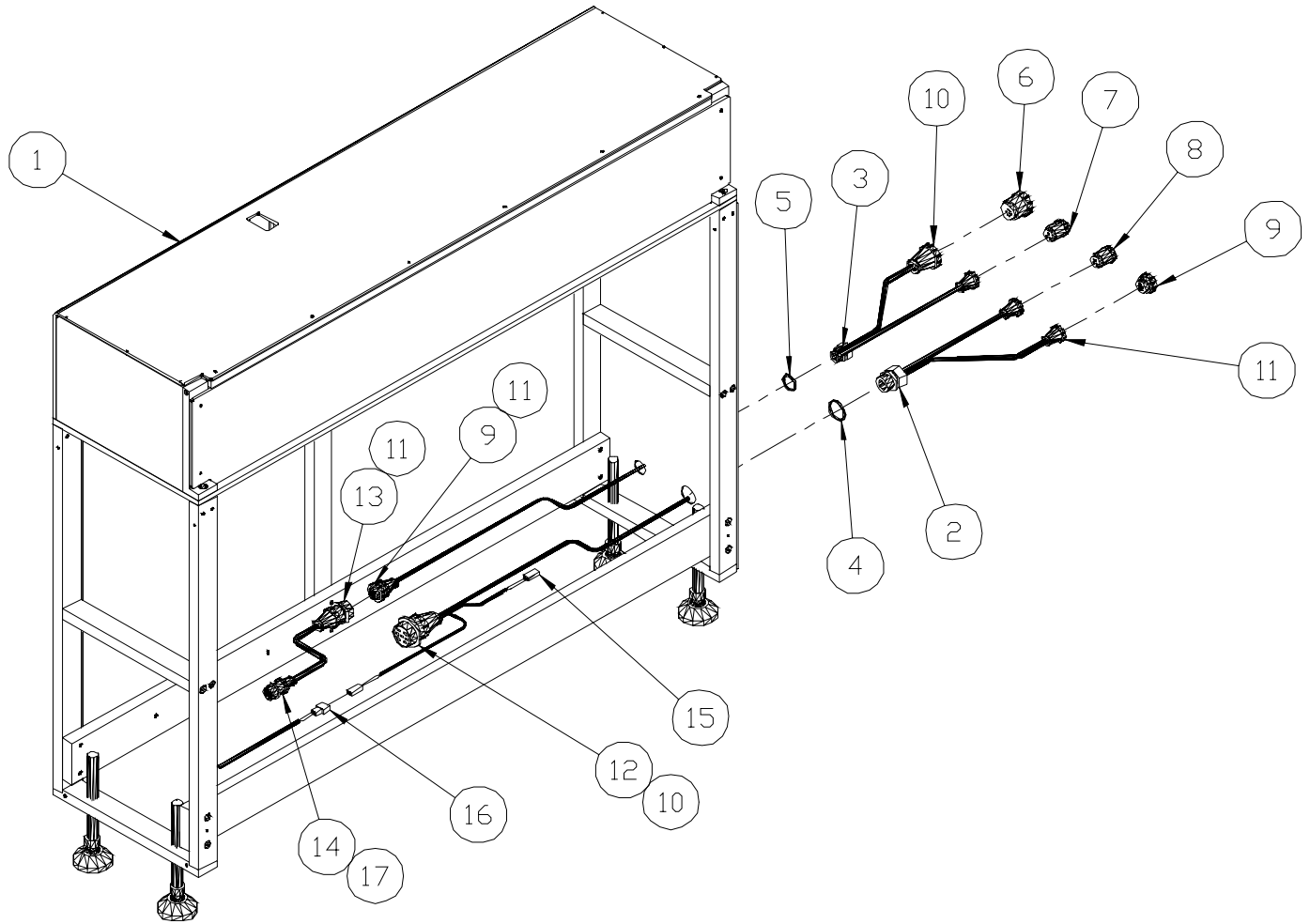
FIG. 16



**SORT CONVEYOR (Fig. 17)
ELECTRICAL ASSEMBLY**

ITEM	PART NO.	QTY.	DESCRIPTION
1	REF.	1	VERTICAL SORTER
2	98015-002	1	STRAIN RELIEF, 3/4"
3	98015-001	1	STRAIN RELIEF, 1/2"
4	98015-003	1	NUT, LOCK, 3/4"
5	98015-004	1	NUT, LOCK, 1/2"
6	98016-013	1	PLUG, AMP, SERIES 3, 23-7 REV.
7	98016-004	1	PLUG, AMP, SERIES 3, 17-3 REV.
8	98016-003	1	PLUG, AMP, SERIES 3, 17-3 STD
9	98016-012	2	PLUG, AMP, SERIES 1, 17-16 STD.
10	98016-014	2	BACKSHELL, PLASTIC, SIZE 23
11	98016-005	5	BACKSHELL, PLASTIC, SIZE 17
12	98016-034	1	RECEPTICAL, FR. HANGING, AMP, SERIES 3, 23-7 STD (CONNECTS TO ITEM 10 – FIG. 18, 23-7 STD PLUG)
13	98016-018	1	RECEPTICAL, FR. HANGING, AMP, SERIES 1, 17-16 STD
14	98016-016	1	RECEPTICAL, FR. HANGING, AMP, SERIES 1, 13-9 STD. (CONNECTS TO ITEM 11 – FIG 18, 13-9 STD PLUG)
15	98016-024	2	FEMALE CONNECTOR, 2 PIN
16	98016-023	1	MALE CONNECTOR, 2 PIN
17	98016-008	1	BACKSHELL, PLASTIC, SIZE 13

FIG. 17



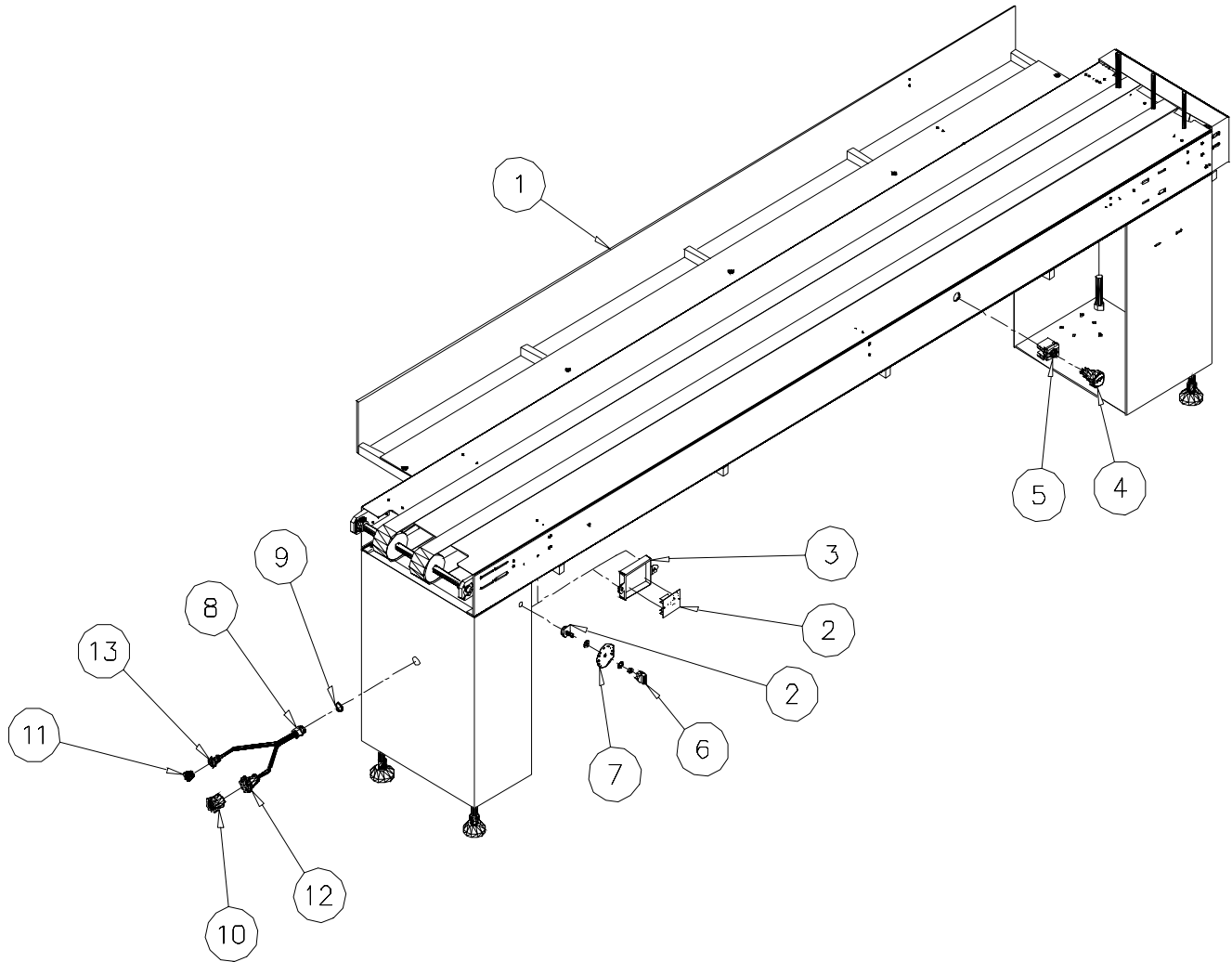
Sure-Feed
Engineering Inc

**COLLECTING CONVEYOR (Fig. 18)
 ELECTRICAL ASSEMBLY**

ITEM	PART NO.	QTY.	DESCRIPTION
1	REF.	1	COLLECTING CONVEYOR, VERTICAL SORT
2	98005-001	1	CONTROLLER, MOTOR, 90V DC W/ SPEED POT
3	98014-005	1	COVER, DC MOTOR CONTROLLER
4	98000-016	1	STOP BUTTON, PUSH / PULL MUSHROOM HEAD
5	98000-017	1	CONTACT BLOCK, 1 X NO + 1 X NC + CLIP
6	99004-015	1	KNOB, SPEED POT
7	98006-004	1	DAIL, SPEED POT
8	98015-001	1	STRAIN RELIEF, 1/2
9	98015-003	1	NUT, LOCK, 1/2
10	98016-033	1	PLUG, AMP, SERIES 3, 23-7 STD
11	98016-007		PLUG, AMP, SERIES 1, 13-9 STD
12	98016-014	1	BACKSHELL, PLASTIC, SIZE 23
13	98016-008	1	BACKSHELL, PLASTIC, SIZE 13
14	98016-023	1	MALE CONNECTOR, 2 PIN (NOT SHOWN)
15	98016-024	1	FEMALE CONNECTOR, 2 PIN (NOT SHOWN)

Sure-Feed
Engineering Inc

FIG. 18



NOTE: MALE / FEMALE 2 PIN CONNECTORS NOT SHOWN (ITEMS 14 & 15)