

PITNEY BOWES

SPEED SORT CONVEYOR

SSCON9-DRY CONTACT

Parts Manual



 **Pitney Bowes**

DIRECT MAIL SOLUTIONS

12050 49th STREET NORTH - CLEARWATER, FL. 33762-4301
PHONE: 727.571.3330 - FAX: 727.571.3443 - TOLL FREE: 1.800.INSERTER
web: sure-feed.com

PITNEY BOWES

VERSION HISTORY

The table below summarizes the history of this document as it is published onto the company website(s). It identifies the version, date of issue and revisions and changes.

VERSION	DATE	CHANGES
PARTS-SSCON9-DRY CONTACT	01-16-09	Initial release

REVISION CONVENTIONS-DOCUMENT

VERSION: name of document with revision_level of entire document- level designates minor changes that do not require revision change

DATE: date of issue for copying and publication of document.

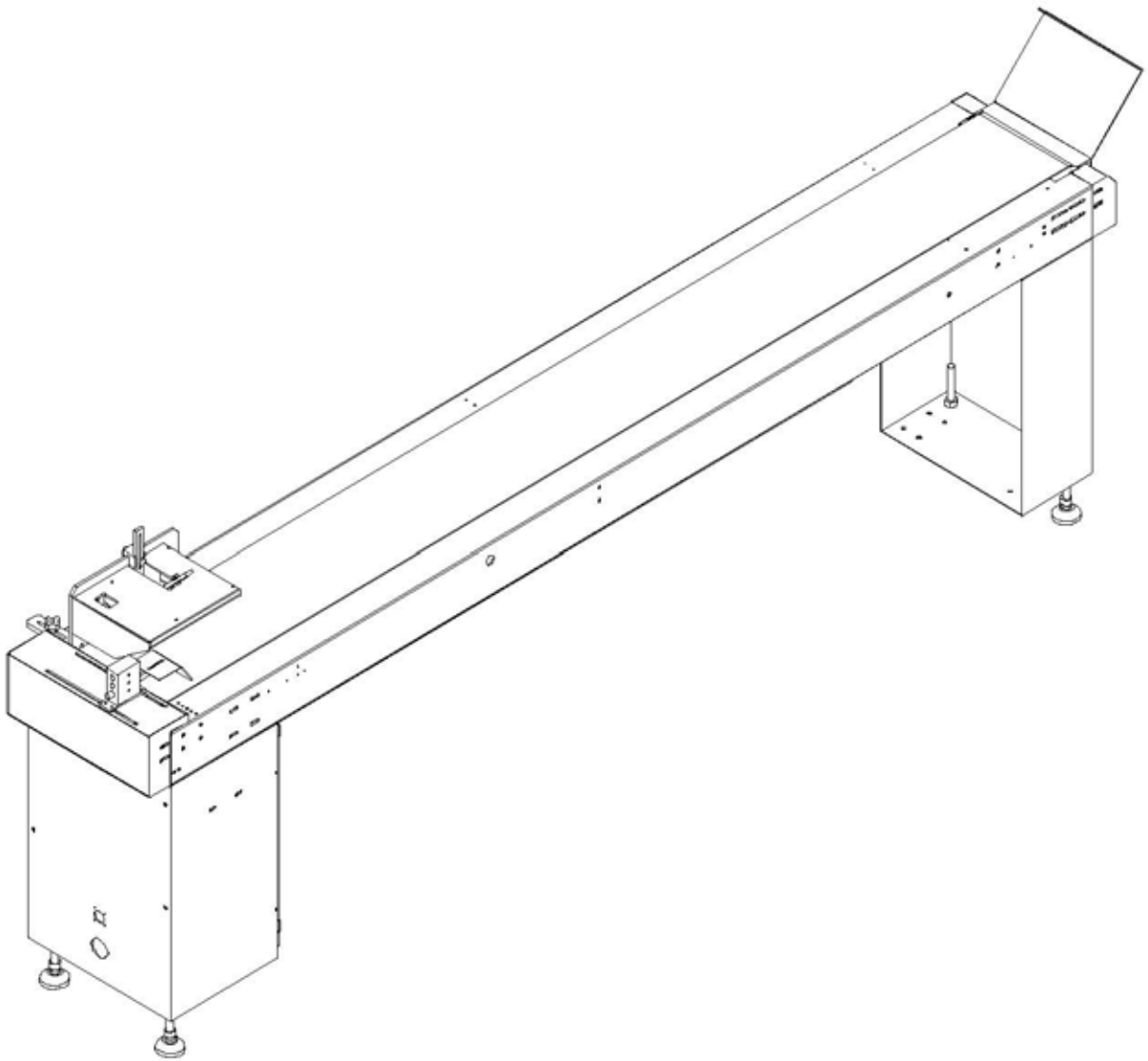
CHANGES: details of document revision_level.

TABLE OF CONTENTS

SPEED SORT CONVEYOR-DRY CONTACT

<u>SPEED SORT CONVEYOR ASSEMBLY (Fig. 1)</u>	4-5
<u>BEARING BLOCKS/ROLLER/PULLEY (Fig. 2A-2D)</u>	6-7
<u>END CAP ADJ GUIDE ASSEMBLY (Fig. 3)</u>	8
<u>SPEED SORT ASSEMBLY (Fig. 4A-4B)</u>	9-12
<u>PNEUMATICS ASSEMBLY (Fig. 5A-5B)</u>	13-14
<u>ELECTRICAL ASSEMBLY (Fig. 6)</u>	15-18

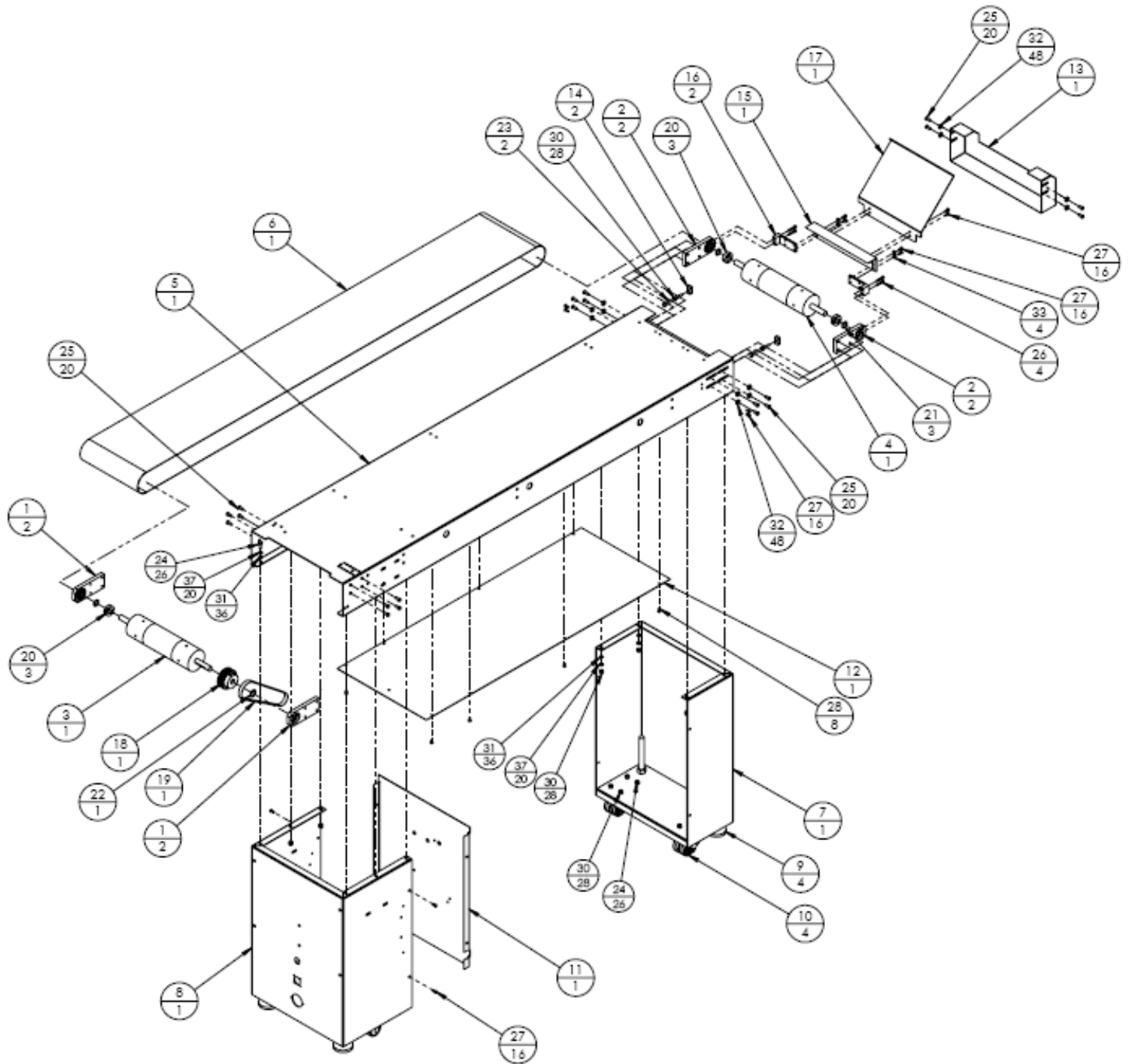
SPEED SORT CONVEYOR



**SPEED SORT CONVEYOR ASSEMBLY (Fig. 1)
12020-028**

ITEM	PART NO.	QTY	DESCRIPTION
1	12020-102	2	ASSY, BEARING BLOCK, DRIVE
2	12020-103	2	ASSY, BEARING BLOCK, IDLER
3	12020-100	1	ASSY, DRIVE ROLLER, 3"
4	12020-101	1	ASSY, IDLER PULLEY, 3"
5	12000-007	1	SIDE FRAME, CONVEYOR, 6'
6	99000-117	1	BELT, ENDLESS, 10"W X 12'-1" LONG
7	12010-003	1	LEG, CONVEYOR IDLER, 30"
8	12010-004	1	LEG, CONVEYOR DRIVE, 30"
9	99010-001	4	FOOT, ADJUSTABLE, 5/8-11
10	99010-002	4	CASTER, 2" DIAM., DOUBLE WHEEL
11	12013-024	1	GUARD, CONVEYOR DRIVE LEG
12	12002-005	1	COVER, BOTTOM
13	12013-021	1	COVER, REAR ROLLER
14	12007-002	2	BLOCK, BEARING ADJUSTING
15	12005-027	1	GUIDE, DISCHARGE TRANSFER
16	12007-032	2	BLOCK, GUIDE MOUNTING
17	12011-035	1	PLATE, ACCUMULATOR
18	99002-047	1	PULLEY, TIMING, 24L050, 1/2B W/ 1/8KWAY
19	99000-063	1	BELT, TIMING, 210L050
20	99017-029	3	COLLAR, ONE PIECE, SPLIT-1/2B
21	99003-021	3	WASHER, NYLON, 5/8 X 1/16
22	99036-008	1	WASHER, STEEL
23	-	2	HBOLT, 1/4-20 X 3
24	-	26	HBOLT, 1/4-20 X 3/4
25	-	20	SCREW, BUT HD, 1/4-20 X 5/8
26	-	4	SCREW, SKT HD, #10-24 X 1
27	-	16	SCREW, BUT HD, #10-24 X 1/2
28	-	8	SCREW, BUT HD, #10-24 X 3/8
29	-	4	HEX NUT, 5/8-11
30	-	28	HEX NUT, 1/4-20
31	-	36	WASHER, STAR, 1/4
32	-	48	WASHER, FLAT, 1/4
33	-	4	WASHER, FLAT, #10

FIG. 1



**SPEED SORT CONVEYOR (Fig. 2A -2D)
BEARING BLOCKS / ROLLER / PULLEY**

ITEM	PART NO.	QTY	DESCRIPTION
1	12020-102	2	ASSY, BEARING BLOCK, DRIVE FIG 2A
	12007-001	1 EA	BLOCK, BEARING
	99003-006	1 EA	BEARING, SEALED, 5/8 X 1-3/8 (W/ SNAP RING)
2	12020-103	2	ASSY, BEARING BLOCK, IDLER FIG 2B
	12007-033	1 EA	BLOCK, BEARING
	99003-006	1 EA	BEARING, SEALED, 5/8 X 1-3/8 (W/ SNAP RING)
3	12020-100	1	ASSY, DRIVE ROLLER, 3" FIG 2C
	12006-018	1	PULLEY, 10" CROWNED
	12004-012	1	SHAFT, STUB DRIVE
	12004-013	1	SHAFT, STUB IDLER
4	12020-101	1	ASSY, IDLER PULLEY, 3" FIG 2D
	12004-013	2	SHAFT, STUB IDLER
	12006-018	1	PULLEY, 10" CROWNED

FIG. 2A

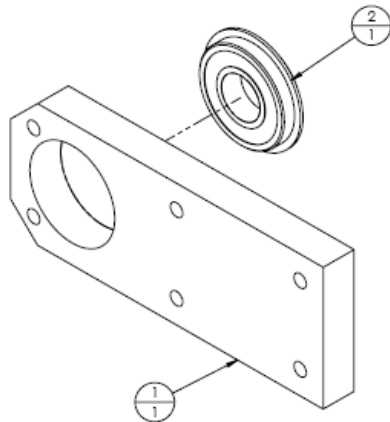
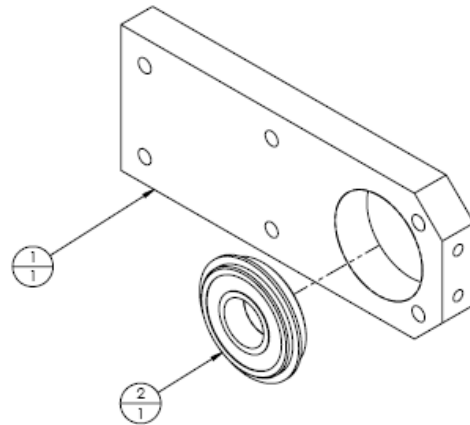


FIG. 2B



PITNEY BOWES

FIG. 2C

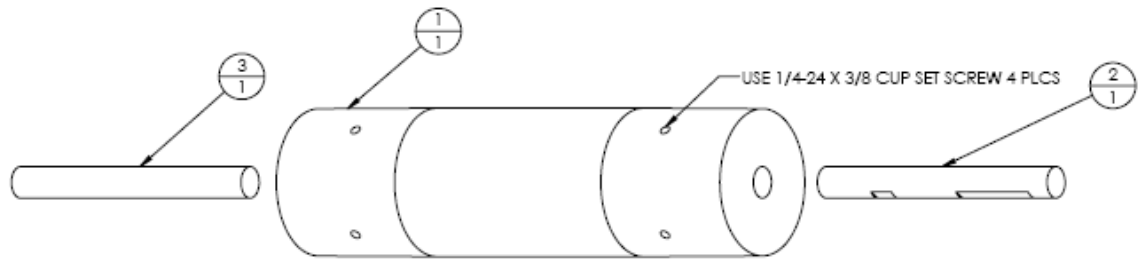
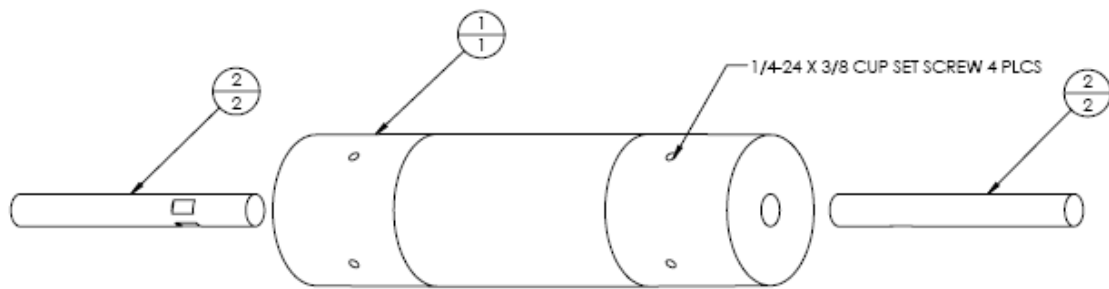
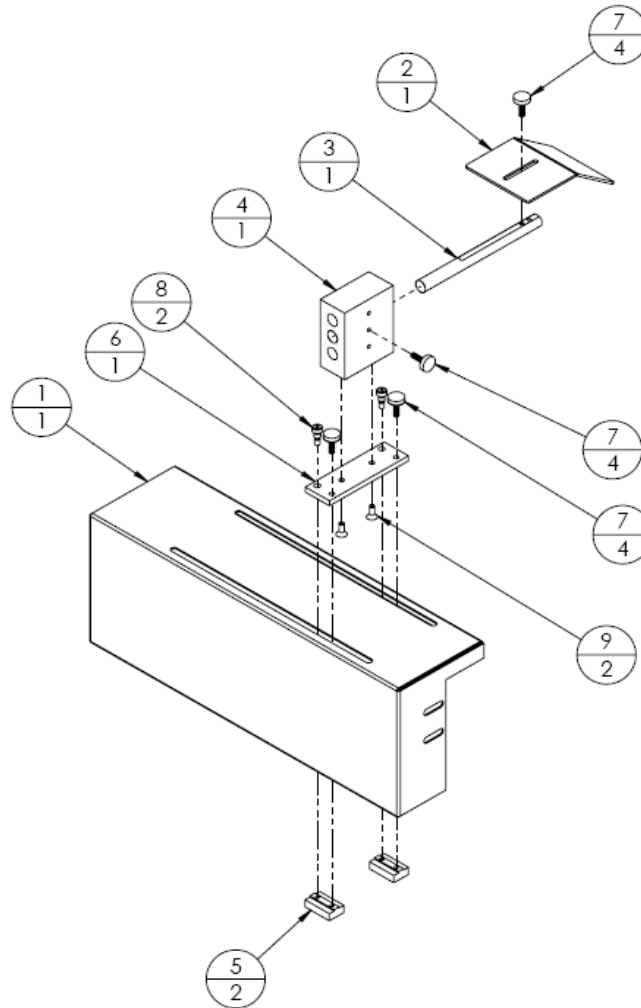


FIG. 2D



**SPEED SORT CONVEYOR (Fig. 3)
END CAP ADJ. GUIDE ASSEMBLY 12020-071**

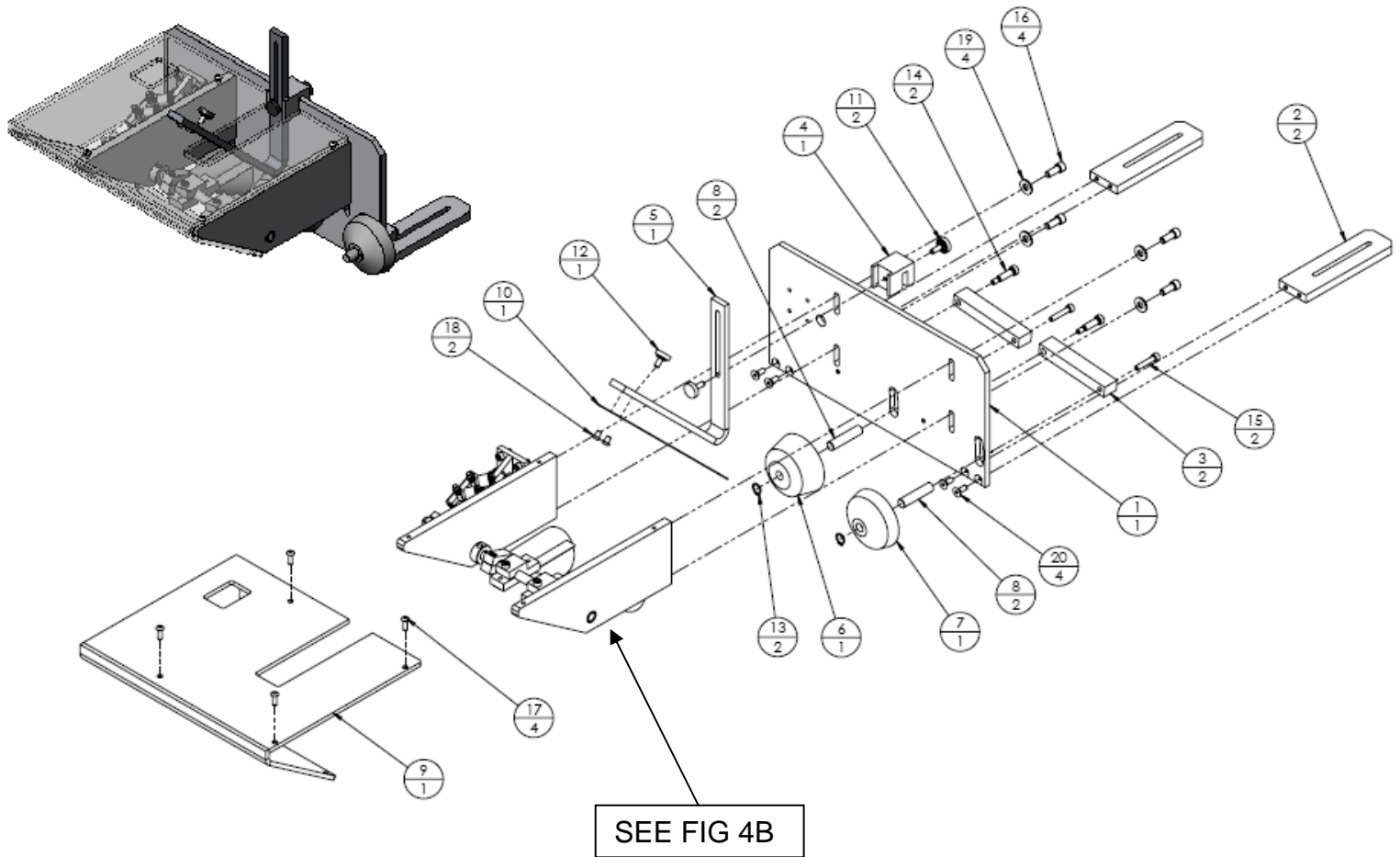
ITEM	PART NO.	QTY	DESCRIPTION
1	12013-018	1	END CAP, IDLER END W/ SLOTS
2	10005-103	1	WEDGE, GUIDE
3	12004-040	1	SHAFT, GUIDE SUPPORT
4	12007-028	1	BLOCK, KNOCK DOWN MTG.
5	12007-029	2	TEE NUT, KNOCK DOWN
6	12008-020	1	BAR, KNOCK DOWN SUPPORT
7	10020-429	4	KNOB, #10 SCREW
8	99033-006	2	SHOULDER BOLT, 1/4 X 1/4
9		2	SCREW, FLAT HD, #10-24 X 1/2



**SPEED SORT CONVEYOR (Fig. 4A)
SPEED SORT ASSEMBLY 12020-026**

ITEM	PART NO.	QTY	DESCRIPTION
1	12011-033	1	PLATE, SPEED SORT MTG.
2	12007-006	2	BAR, KNOCKDOWN PLATE MTG
3	12008-028	2	BAR, KNOCKDOWN ROLLER MTG.
4	12007-007	1	BRACKET, KNOCK DOWN MTG
5	12008-001	1	BRACKET, KNOCKDOWN
6	12006-023	1	CONE, STOP (LONG)
7	12006-022	1	CONE, STOP (SHORT)
8	12004-034	1	SHAFT, 1-3/8" ROLLER
9	12013-019	1	COVER, SPEED SORT
10	12005-007	1	STRAP, KNOCKDOWN
11	10020-317	2	ASSY, KNOB, #10-24 X 1/2
12	10020-316	1	ASSY, KNOB, #10-24 X 3/8
13	99022-003	2	SNAP RING, 3/8
14	99033-005	2	BOLT, SHOULDER, 1/4 X 3/4
15	-	2	SHCS, #10-24 X 1
16	-	4	SHCS, 1/4-20 X 5/8
17	-	4	SBHCS, #8-32 X 1/2
18	-	2	SBHCS, 310-24 X 1/4
19	-	4	FLAT WASHER, 1/4
20	-	4	SFHCS, #10-24 X 1/2

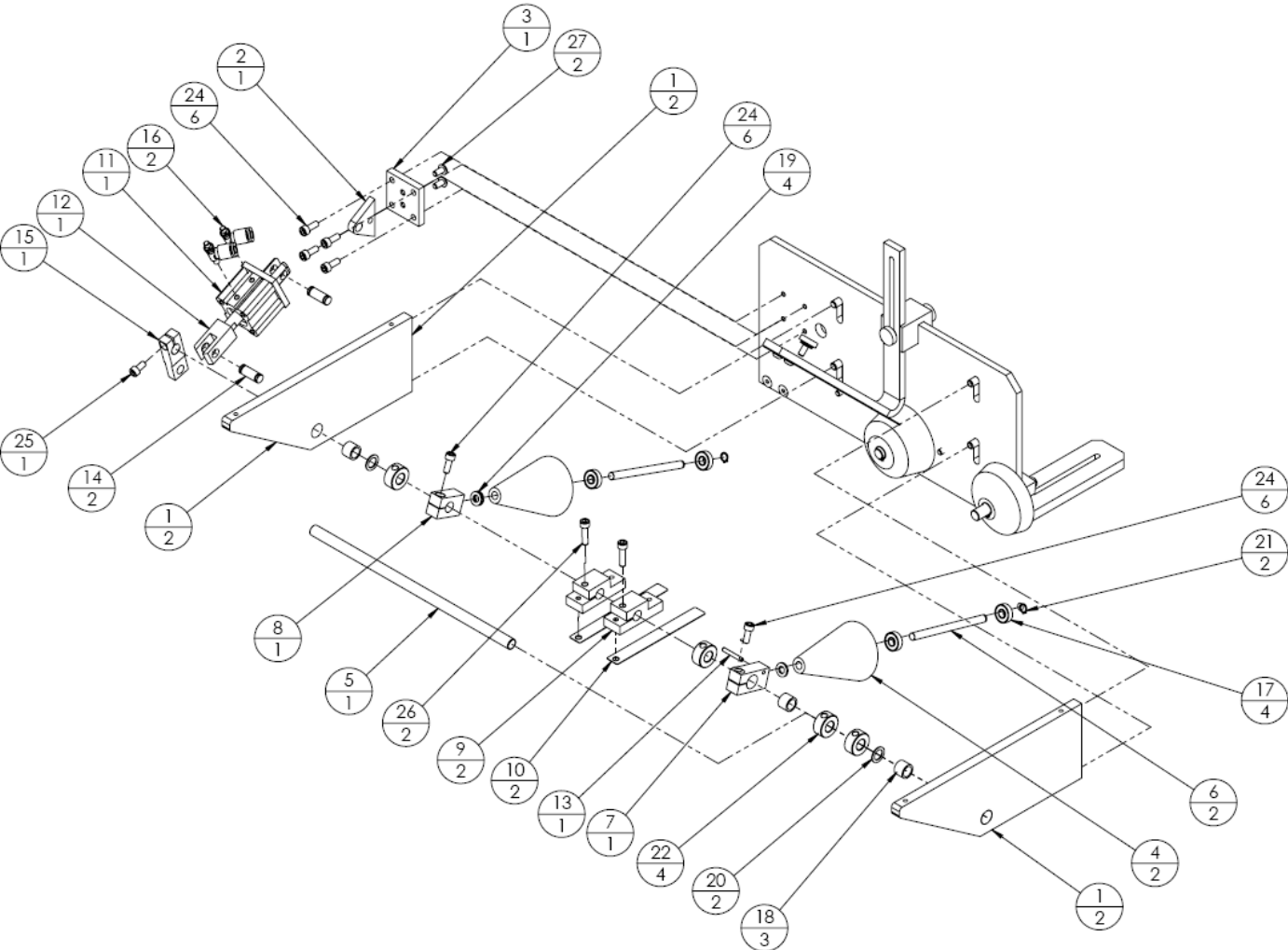
FIG. 4A



**SPEED SORT CONVEYOR (Fig. 4B)
SPEED SORT ASSEMBLY 12020-026**

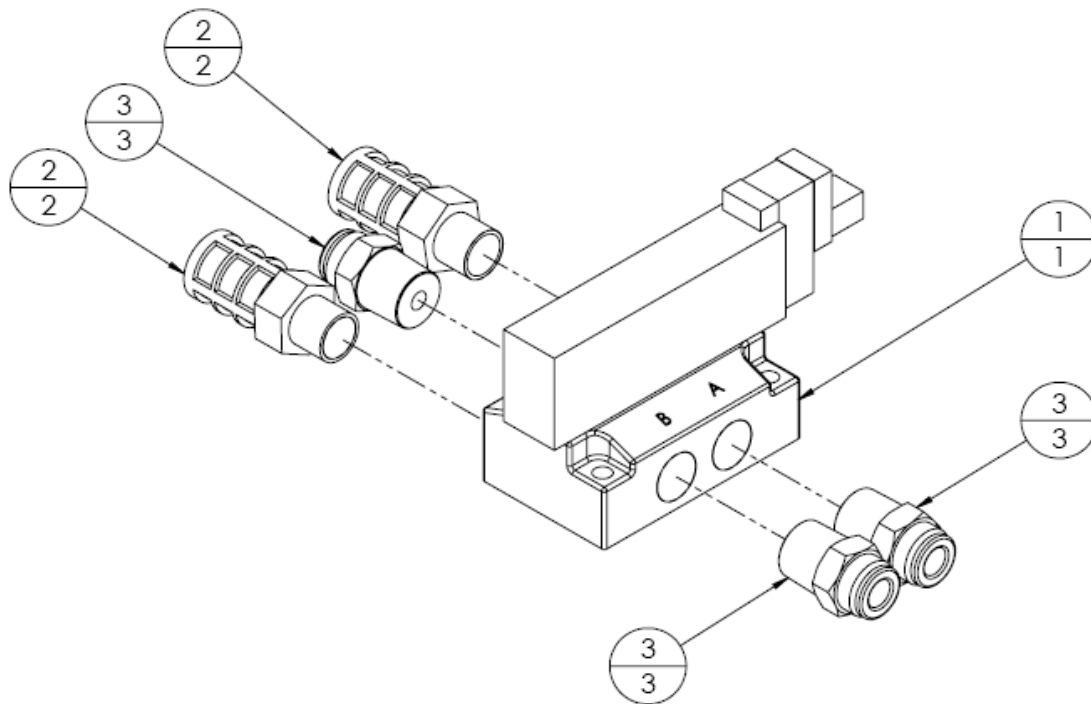
ITEM	PART NO.	QTY	DESCRIPTION
1	12011-034	1	PLATE, SIDE MTG.
2	12007-030	1	BLOCK, CLEVIS
3	12007-031	1	BLOCK, CLEVIS MTG.
4	12006-021	2	ROLLER, KNOCKDOWN
5	12004-032	1	SHAFT, CONE PIVOT
6	12004-030	2	SHAFT, KNOCKDOWN ROLLER MTG
7	12009-009	1	BRACKET, KNOCKDOWN ROLLER ADJ.
8	12009-010	1	BRACKET, CONE PIVOT
9	21009-016	2	BRACKET, SPRING STEEL
10	12005-031	2	GUIDE, SPRING STEEL
11	99014-016	1	CYLINDER, COMPACT, 20mm B X 12mm ST
12	99014-018	1	CLEVIS, DOUBLE ROD
13	99006-041	1	PIN, SPRING, 1/8 X 7/8
14	99014-019	2	PIN, CLEVIS
15	12009-011	1	BRACKET, CYLINDER
16	99028-126	2	FITTING, FLO-CONTROL, #10-32 X 1/4 TUBE
17	99003-002	4	BEARING, 1/4 X 5/8 SEALED
18	99003-077	3	BUSHING, SLEEVE, 3/8 X 1/2 X 3/8
19	99003-013	4	WASHER, NYLON, 1/4 X 1/16
20	99003-016	2	WASHER, NYLON, 3/8 X 1/32
21	99022-024	2	SNAP RING, EXTERNAL, 1/4
22	99017-003	4	COLLAR, SHAFT, 3/8
23	99031-012	9 FT	TUBING, CLEAR, 1/4" (NOT SHOWN)
24	-	6	SHCS, #10-24 X 1/2
25	-	1	SHCS, #10-24 X 3/8
26	-	2	SHCS, #10-24 X 3/4
27	-	2	SBHCS, #10-24 X 3/8

FIG. 4B



**SPEED SORT CONVEYOR (Fig. 5A)
PNEUMATICS ASSEMBLY (SOLENOID) 12020-029**

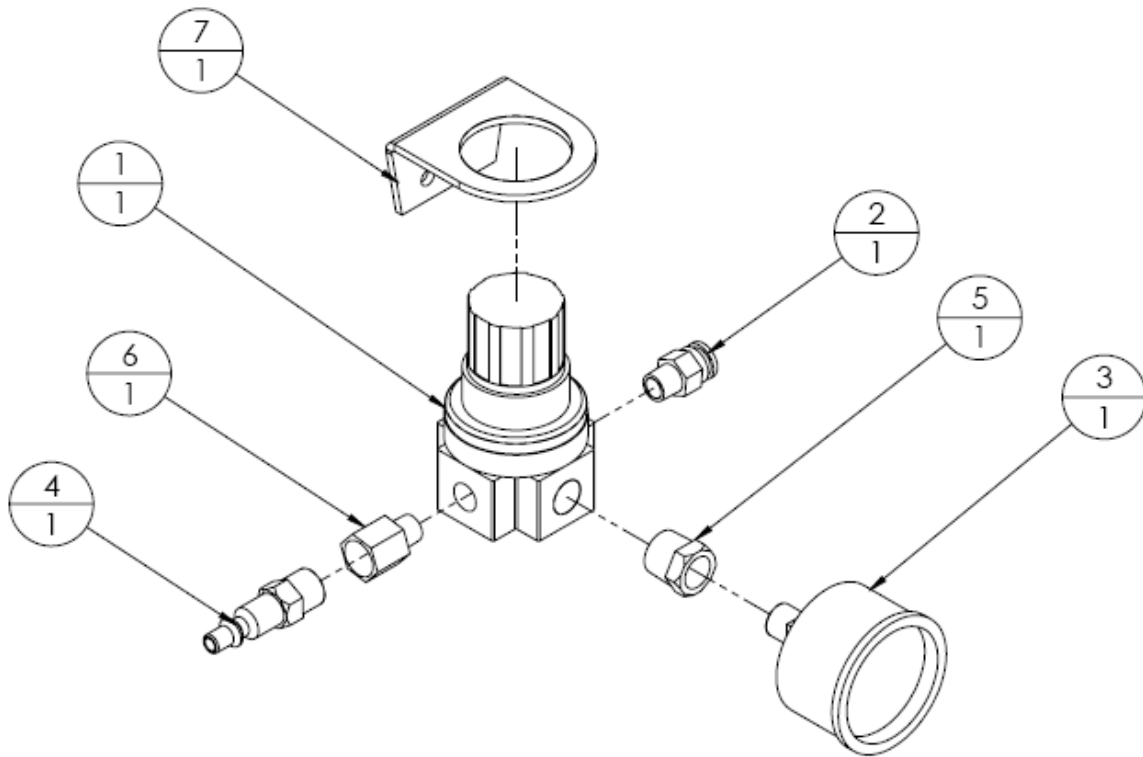
ITEM	PART NO.	QTY	DESCRIPTION
1	99025-012	1	SOLENOID, 2-POS, 24V DC
2	99028-006	2	MUFFLER, 1/4 NPT
3	99028-082	3	FITTING, MALE CONNECTOR, 1/4 NPT X 1/4 TUBE
N/S	98016-024	1	CONNECTOR, 2 POS RECEPTACLE
N/S	98016-056	2	CONTACT, SOCKET, 24-18 AWG



**SPEED SORT CONVEYOR (Fig. 5B)
PNEUMATICS ASSEMBLY (REGULATOR) 12020-110**

ITEM	PART NO.	QTY	DESCRIPTION
1	99026-015	1	REGULATOR
2	99028-016	1	FITTING, MALE CONNECTOR, 1/8 NPT X 1/4 TUBE
3	99030-003	1	GAUGE, 0-160 PSI
4	99028-119	1	COUPLING, QUICK DISCONNECT, 1/4 X 1/4 NPT
5	99028-120	1	BUSHING, 1/4 NPT MALE X 1/4 NPT FEMALE
6	99028-118	1	ADAPTOR, 1/8 NPT MALE X 1/4 NPT FEMALE
7	99026-007	1	BRACKET, REGULATOR MTG.

FIG. 5B



**SPEED SORT CONVEYOR (Fig. 6)
ELECTRICAL ASSEMBLY**

ITEM	PART NO.	QTY	DESCRIPTION
REF	12021-046	1	ASSY, MOTOR-TUV (SEE FIG 6A)
1	12011-005	1	PLATE, MOTOR MOUNT
2	99001-014	1	GEARMOTOR, 1/8 HP 167 RPM
3	99002-041	1	PULLEY, TIMING 14L050 5/8B
4	-	4	FLAT WASHER, 1/4
5	-	4	BOLT, HEX HEAD, 1/4-20 X 3/4
-	98016-023	1	CONNECTOR, 2-POS MALE, .093
-	98016-057	2	CONTACT, PIN, 24-18 AWG
REF	12021-036	1	ASSY, MASTER ELECTRICAL-DRY CONTACT (FIG 6B)
1	12021-097	1	ASSY, ELECTRICAL BOX (NO DRAWING)
	12013-016	1	ENCLOSURE, ELECTRICAL
	12013-026	1	COVER, ENCLOSURE
	98005-001	1	MOTOR CONTROLLER, 90V DC
	98008-001	1	TRANSFORMER, 24 VAC
	98001-002	1	TERMINAL STRIP, 12-CONNECTION
	98023-005	1	I/O BOARD
	98016-023	2	CONNECTOR, 2-POS PLUG, .093
	98016-024	1	CONNECTOR, 2-POS RECEPTACLE, .093
	98016-115	1	CONNECTOR, 3-POS PLUG, .093
	98016-116	1	CONNECTOR, 3-POS RECEPTACLE, .093
	98016-081	1	CONNECTOR, 4-POS RECEPTACLE, .093
	98016-063	1	CONNECTOR, 6-POS PLUG, .093
	98016-057	10	CONTACT, PIN, 24-18 AWG
	98016-056	5	CONTACT, SOCKET, 24-18 AWG
	98001-035	4	CONTACT, SOCKET, 22-26 AWG
	98015-023	1	FINISHING PLUG, 7/8 HOLE
	98015-017	3	FINISHING PLUG, 1-1/8 HOLE
	98015-002	1	STRAIN RELIEF, 3/4"
2	12021-082	1	ASSY, TRIGGER SENSOR (NO DRAWING)
	98009-023	1	SENSOR, PHOTOELECTRIC TRIGGER
	98016-086	1	CONNECTOR, 4-POS PLUG, .093
	98001-044	4	CONTACT, PIN, 26-22 AWG

PITNEY BOWES

ITEM	PART NO.	QTY.	DESCRIPTION
3	12021-092	1	ASSY, CABLE, POWER INLET (NO DRAWING)
	98016-074	1	RECEPTACLE, FLANGED, 3-PIN
	98004-002	1	CIRCUIT BREAKER, 1 AMP
	98016-116	1	CONNECTOR, 3-POS RECEPTACLE, .093
	98016-056	3	CONTACT, SOCKET, 24-18 AWG
4	12021-027	1	ASSY, POWER CABLE (NON-TUV) (NO DRAWING)
	98003-010	1	PLUG, 3 PIN, 2 POLE, 15A, 115V
	98016-073	1	PLUG,HUBBEL, 3 PIN, 1 POLE, 115
	98010-010	12 FT	WIRE, 16/3, SJOOW BLACK
5	12021-093	1	ASSY, CABLE, DRY CONTACT (NO DRAWING)
	98016-011	1	RECEPTACLE, SQ FL, 4-POS FEMALE
	98016-062	1	CONNECTOR, 6-POS RECEPTACLE, .093
	98016-027	4	CONTACT, SOCKET, 24-20 AWG
	98016-056	4	CONTACT, SOCKET, 24-18 AWG
6	12021-096	1	ASSY, 10K SPEED POT (NO DRAWING)
	98006-036	1	SPEED POT, 10K
	98016-115	1	CONNECTOR, 3-POS PLUG, .093
	98016-057	3	CONTACT, PIN, 24-18 AWG
7	12021-094	1	ASSY, 1 MEG SPEED POT (NO DRAWING)
	98006-037	1	SPEED POT, 1 MEG
	98016-024	1	CONNECTOR, 2-POS RECEPTACLE, .093
	98016-056	4	CONTACT, SOCKET, 24-18 AWG
8	98006-021	2	KNOB, POTENTIOMETER
9	98006-004	2	DIAL, SPEED POT
10	98015-023	4	FINISHING PLUG, 7/8 HOLE
11	98015-017	1	FINISHING PLUG, 1-1/8
12	12021-095	1	ASSY, CABLE, MOTOR POWER (NOT SHOWN)
	98016-024	1	CONNECTOR, 2-POS RECEPTACLE, .093
	98016-023	1	CONNECTOR, 2-POS PLUG, .093
	98016-056	2	CONTACT, SOCKET, 24-18 AWG
	98016-057	1	CONTACT, PIN, 24-18 AWG
	98010-075	3 FT	CABLE, SHIELDED, 18/3

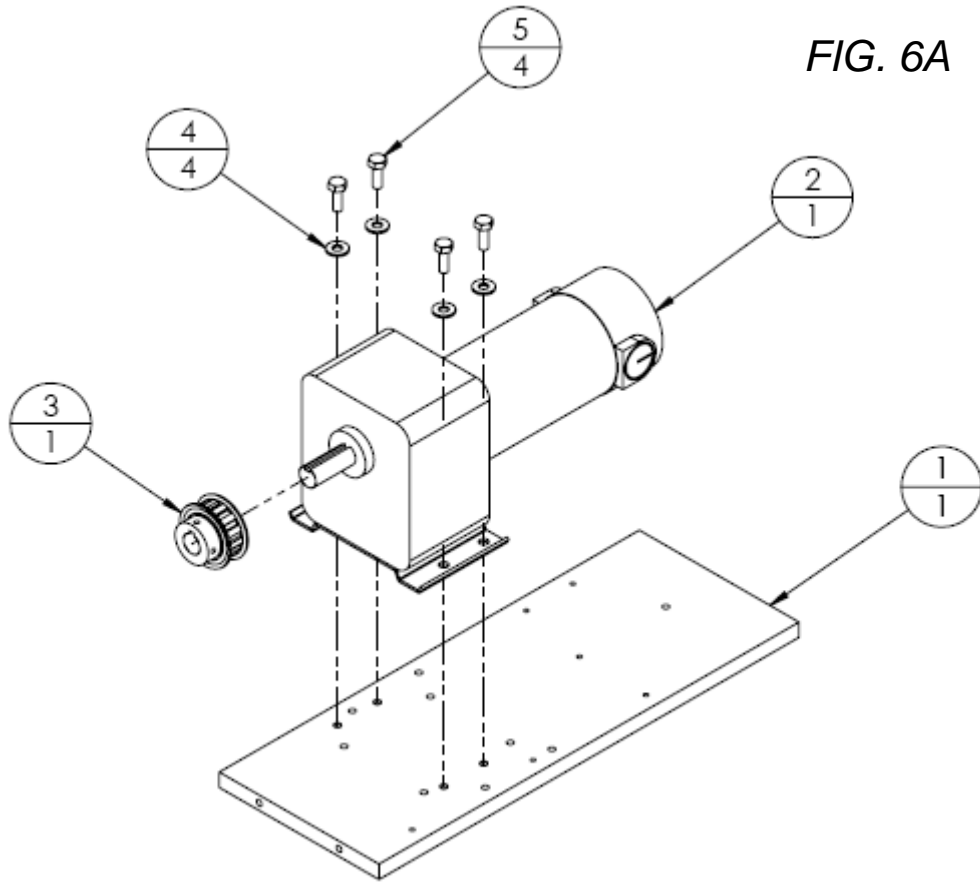


FIG. 6B

