

STAND ALONE DRYER BASE

Parts Manual



12050 49th Street North
Clearwater, Florida 33762

Phone: 727-571-3330 Fax: 727-571-3443
TOLL FREE: 1-800-INSERTER
Web: www.sure-feed.com

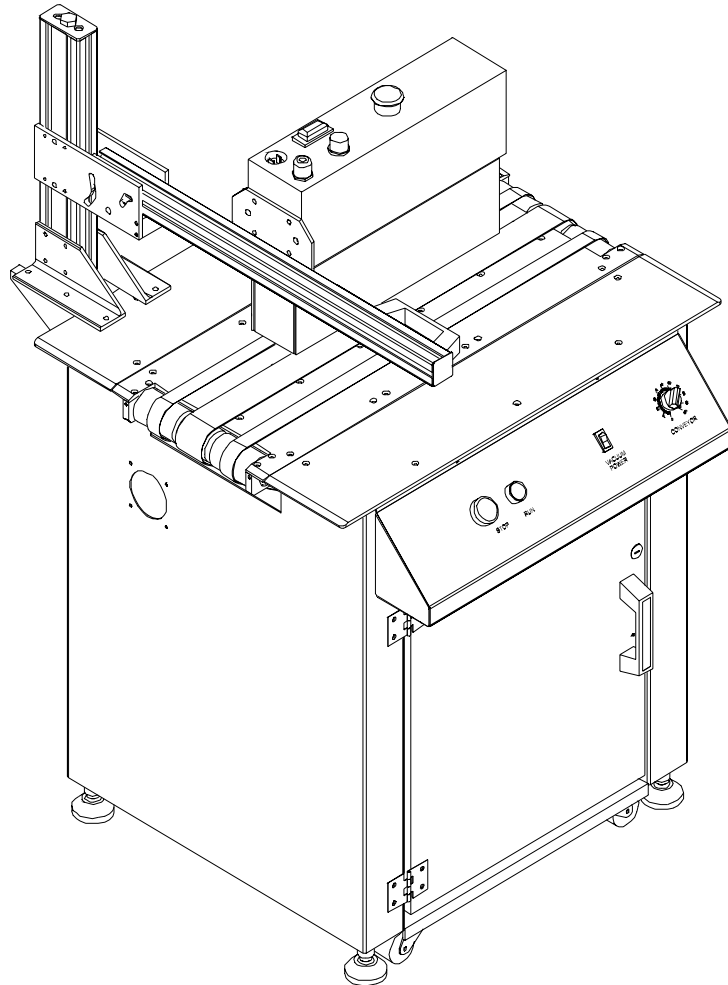
TABLE OF CONTENTS

DRYER BASE SYSTEM

DRYER BASE SYSTEM ASSEMBLY (FIG. 1).....	3
FRAME ASSEMBLY (FIG. 2).....	5
CONVEYOR DRIVE ASSEMBLY (FIG. 3).....	7
IDLER SHAFT / TENSIONER ASSEMBLY (FIG. 4).....	9
DRIVE SHAFT ASSEMBLY (FIG. 5).....	11
BELT GUIDE ASSEMBLY (FIG. 6).....	13
VACUUM ASSEMBLY (FIG. 7).....	15
ELECTRICAL ENCLOSURE ASSEMBLY (FIG. 8).....	17
CONTROL CONSOLE ASSEMBLY (FIG. 9).....	20
BASE ELECTRICAL ASSEMBLY (FIG. 10).....	22

Sure-Feed
Engineering Inc

STAND ALONE DRYER BASE SYSTEM



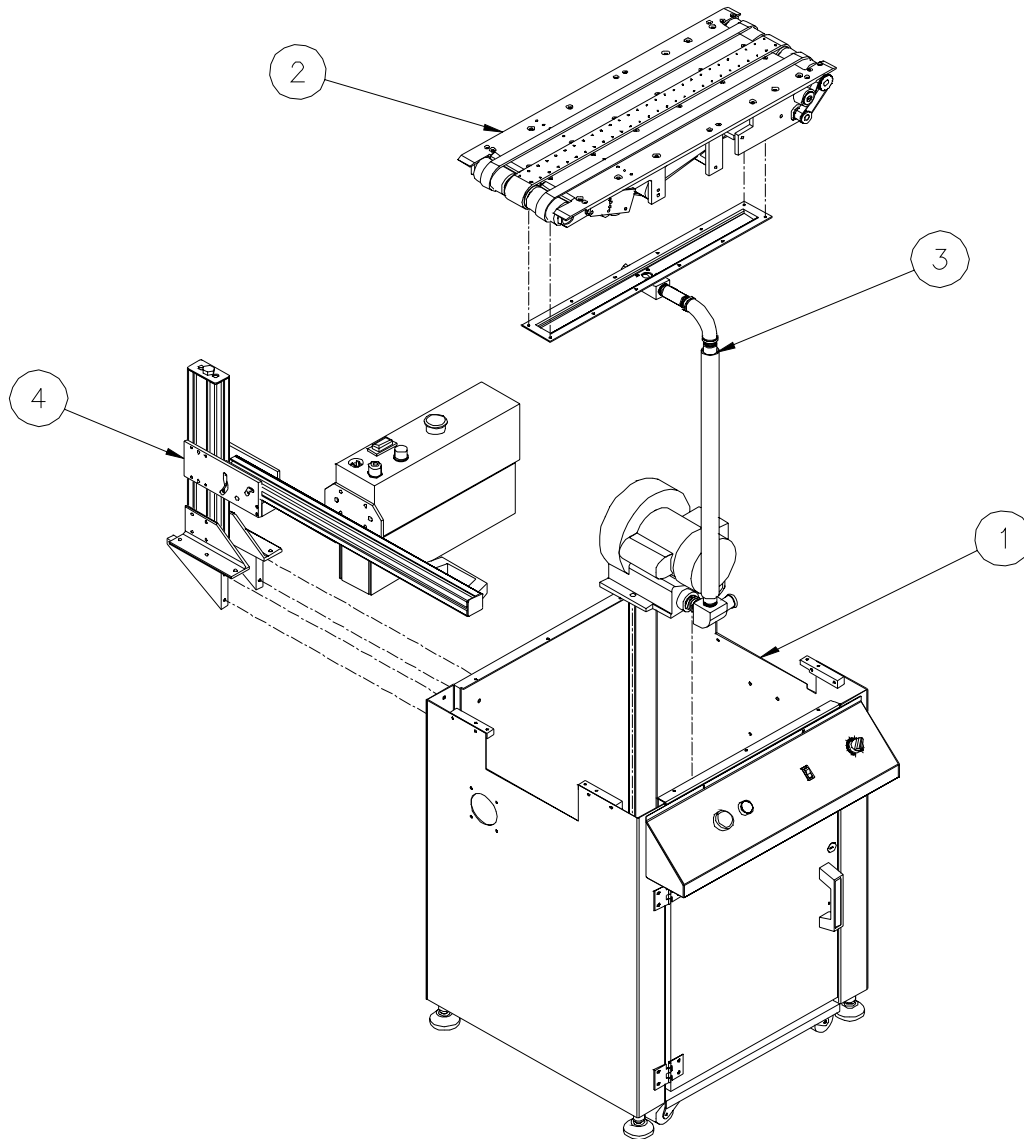
Sure-Feed
Engineering Inc

DRYER BASE SYSTEM ASSEMBLY (Fig. 1)

ITEM	PART NO.	QTY.	DESCRIPTION
1	SEE FIG. 2	1	FRAME ASSEMBLY
2	SEE FIG. 3-6	1	CONVEYOR DRIVE ASSEMBLY
3	SEE FIG. 7	1	VACUUM ASSEMBLY
4	98021-001	1	SPEED DRYER ASSEMBLY

Sure-Feed
Engineering Inc

FIG. 1



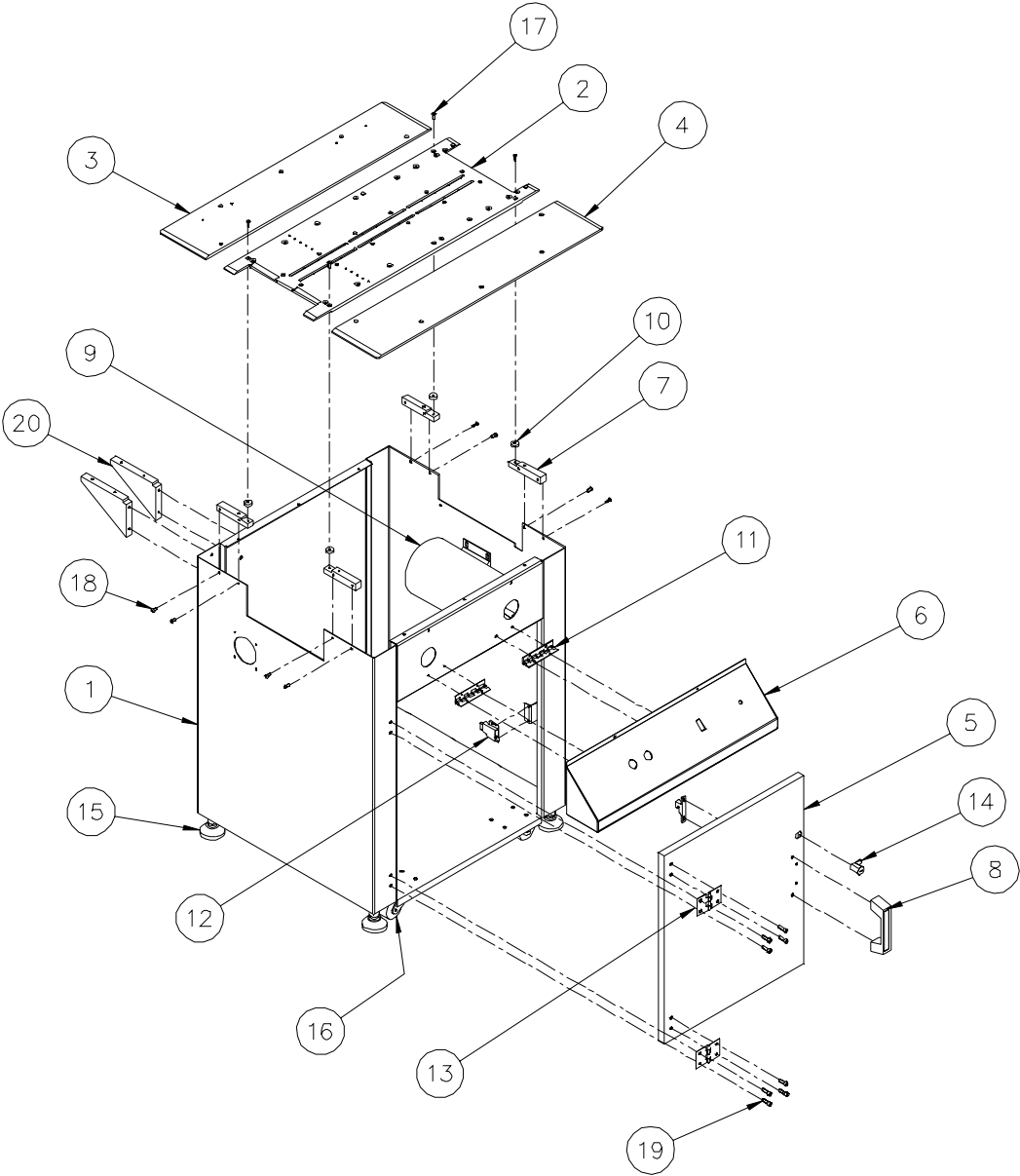
Sure-Feed
Engineering Inc

DRYER BASE SYSTEM (Fig. 2)
FRAME ASSEMBLY

ITEM	PART NO.	QTY.	DESCRIPTION
1	16000-016	1	BASE, FRAME WELDMENT, DRYER CONVEYOR
2	16011-078	1	PLATE, DRYER, TOP CENTER
3	16011-028	1	PLATE, DRYER, TOP LH
4	16011-027	1	PLATE, DRYER, TOP RH
5	16013-051	1	DOOR, LH
6	16013-033	1	ENCLOSURE, ELECTRICAL CONTROL
7	16007-014	4	BLOCK, TOP PLATE MTG.
8	99012-001	1	HANDLE, DOOR
9	99001-025	1	MOTOR, 1/2 HP 56 FRAME
10	16012-003	4	STANDOFF, HI TEMP
11	16013-013	2	HINGE, ELECTRICAL CONTROL CONSOLE
12	99013-001	1	LATCH, DOOR
13	99011-002	2	HINGE, DOOR
14	99039-034	1	LATCH, ENCLOSURE
15	99010-001	4	FOOT, ADJUSTABLE, 5/8-11
16	99010-002	4	CASTER, 2"
17		14	SCREW, FLAT HD, 10-24 X 5/8
18		8	SCREW, BUTTON HD, 10-24 X 1/2
19		8	SCREW, SKT HD, 1/4-20 X 5/8
20	16007-015	2	BLOCK, DRYER SUPPORT
	NOT SHOWN	16	SCREW, HEX HD, 5/16-18 X 3/4 (WHEELS)
	NOT SHOWN	16	NUT, HEX, 5/16-18 (WHEELS)
	NOT SHOWN	16	WASHER, FLAT, 5/16 (WHEELS)
	NOT SHOWN	16	WASHER, LOCK, 5/16 (WHEELS)
	NOT SHOWN	8	NUT, HEX, 1/4-20 (DOOR HINGE)
	NOT SHOWN	8	WASHER, FLAT, 1/4 (DOOR HINGE)
	NOT SHOWN	4	NUT, HEX, 5/8-11 (ADJ. FOOT)

Sure-Feed
Engineering Inc

FIG. 2



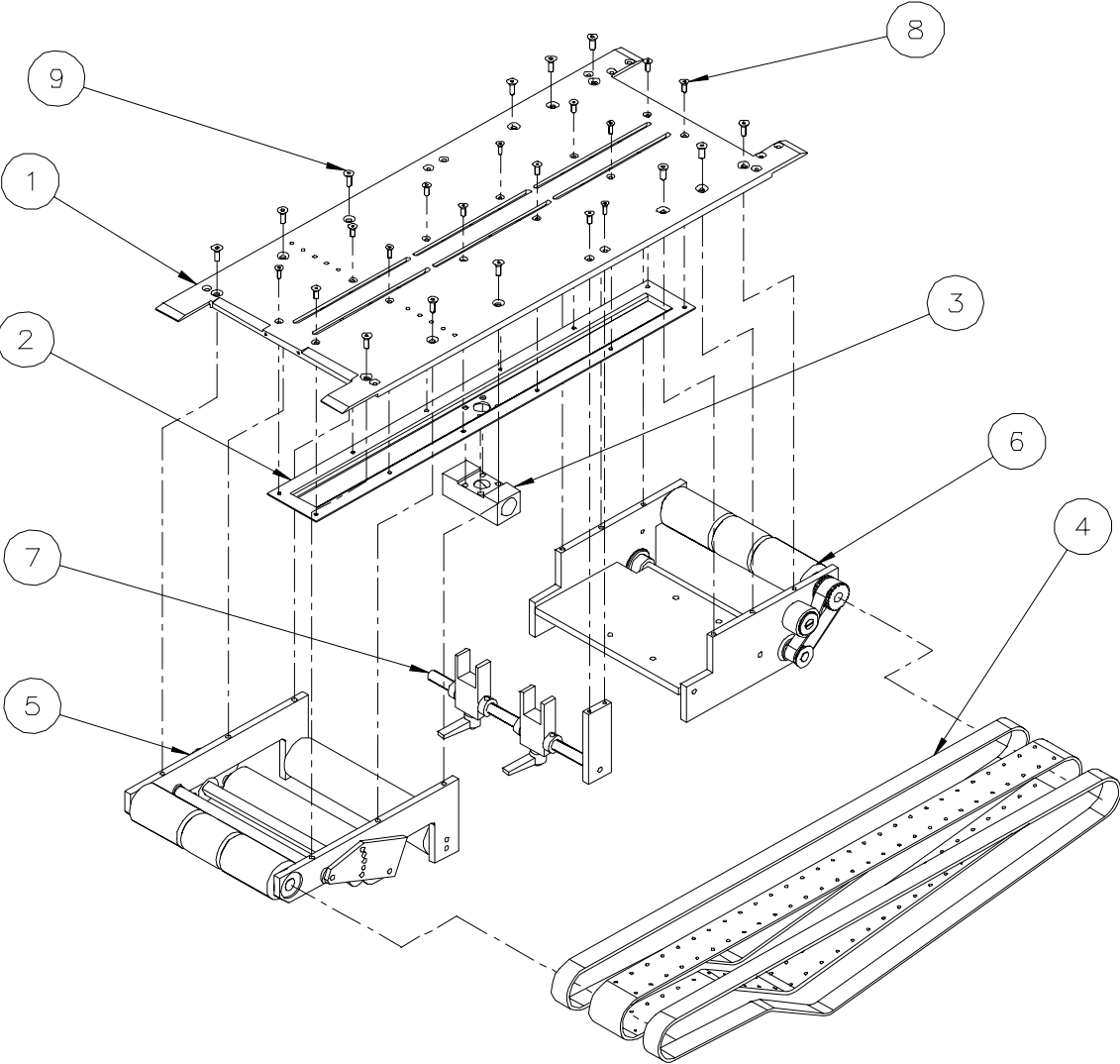
Sure-Feed
Engineering Inc

DRYER BASE SYSTEM (Fig. 3)
CONVEYOR DRIVE ASSEMBLY

ITEM	PART NO.	QTY.	DESCRIPTION
1	16011-078	1	PLATE, DRYER, TOP CENTER (REF. FIG. 2)
2	16013-063	1	VACUUM CHAMBER, DRYER CONVEYER
3	16007-053	1	BLOCK, VACUUM CHAMBER
4	16014-007	1	BELT, SET, SEAMLESS, DRYER
5	SEE FIG. 4	1	ASSEMBLY, IDLER / TENSIONER
6	SEE FIG. 5	1	ASSEMBLY, DRIVE
7	SEE FIG. 6	1	ASSEMBLY, BELT GUIDE
8		14	SCREW, FLAT HD, 10-24 X 5/8
9		12	SCREW, FLAT HD, 1/4-20 X 1/2

Sure-Feed
Engineering Inc

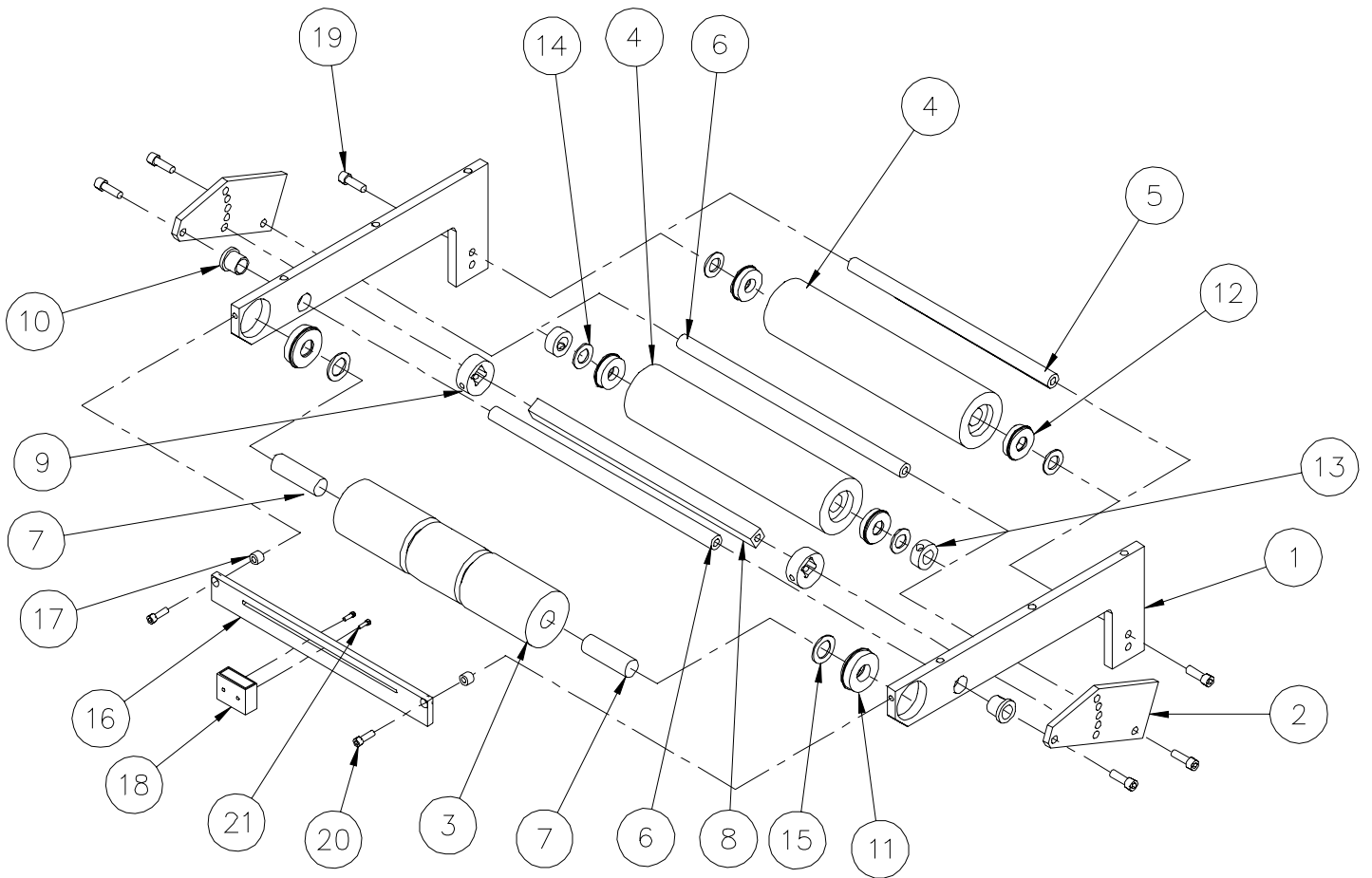
FIG. 3



**DRYER BASE SYSTEM – CONVEYOR DRIVE (Fig. 4)
 IDLER SHAFT / TENSIONER ASSEMBLY**

ITEM	PART NO.	QTY.	DESCRIPTION
1	16007-052	2	BLOCK, BEARING (L-SHAPE)
2	16008-021	2	BAR, IDLER TENSIONER
3	16006-020	1	PULLEY, DRIVE
4	16006-002	2	PULLEY, IDLER
5	16004-046	1	SHAFT, IDLER (SHORT)
6	16004-045	2	SHAFT, IDLER (LONG)
7	16004-028	2	SHAFT, IDLER (STUB)
8	16004-044	1	SHAFT, ECCENTRIC
9	16006-028	2	ROLLER, ECCENTRIC
10	99003-086	2	BUSHING, FL, 1/2 X 5/8 X 1/2
11	99003-063	2	BEARING, SEALED, 5/8 X 1-3/8 (HI TEMP GREASE)
12	99003-047	4	BEARING, SEALED, 1/2 X 1-1/8 (HI TEMP GREASE)
13	99017-004	2	COLLAR, SHAFT, 1/2
14	99003-018	4	WASHER, NYLON, 1/2 X 1/16
15	99003-084	2	WASHER, STEEL, 5/8 X 1/16
16	16008-031	1	BAR, SWITCH MTG.
17	16012-017	1	SPACER, SWITCH MTG.
18	98009-023	1	SENSOR, PHOTOELECTRIC TRIGGER
19		6	SCREW, SKT HEAD, 1/4-20 X 3/4
20		2	SCREW, SKT HEAD, 10-24 X 5/8
21		2	SCREW, BUTTON HEAD, 4-40 X 1/2

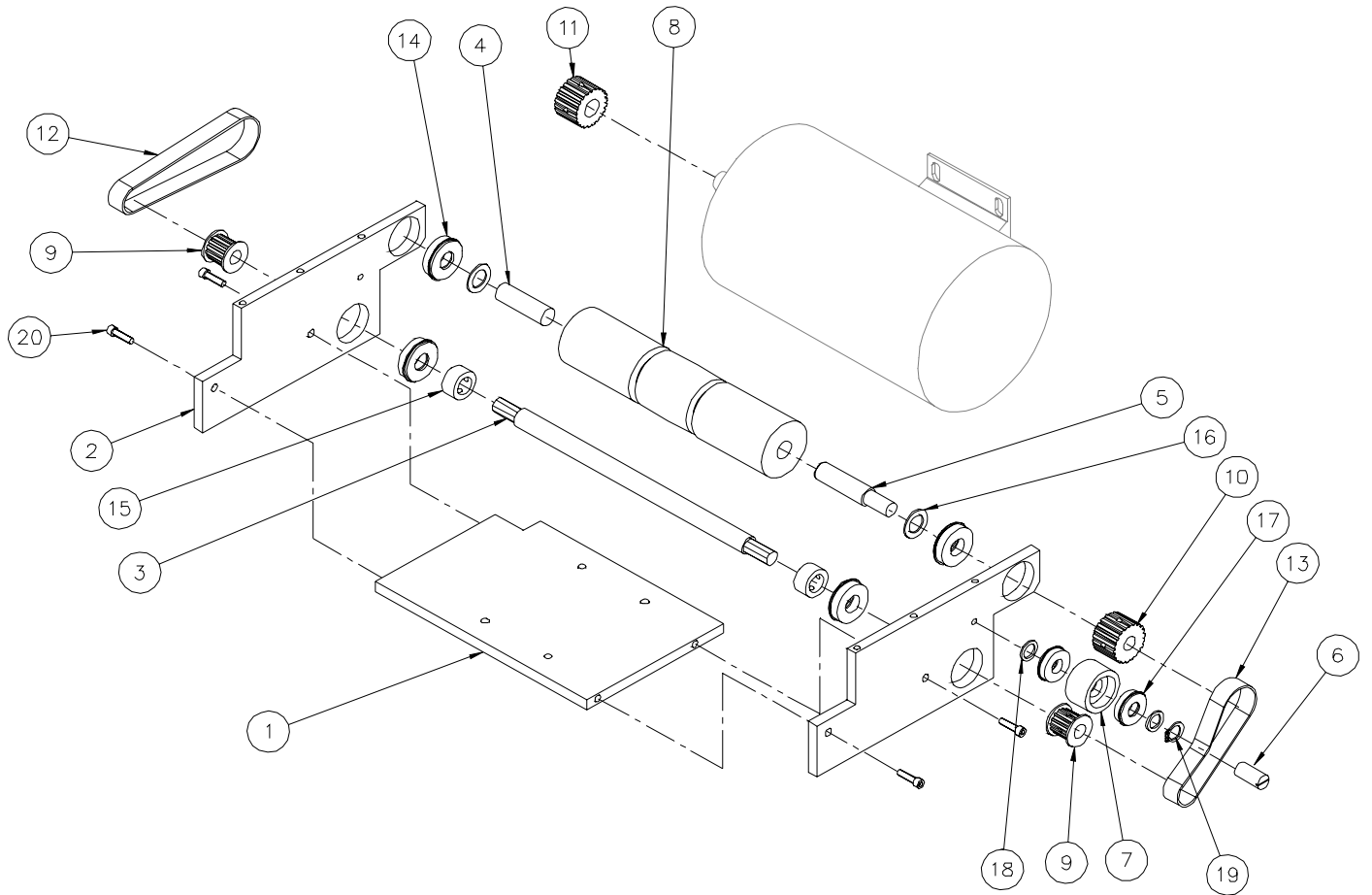
FIG. 4



**DRYER BASE SYSTEM – CONVEYOR DRIVE (Fig. 5)
DRIVE SHAFT ASSEMBLY**

ITEM	PART NO.	QTY.	DESCRIPTION
1	16011-008	1	PLATE, MOTOR MTG.
2	16011-004	2	PLATE, MOTOR MTG SUPPORT
3	16004-030	1	SHAFT, INTERMEDIATE
4	16004-028	1	SHAFT, IDLER, (STUB)
5	16004-027	1	SHAFT, DRIVE (STUB)
6	16004-037	1	SHAFT, TENSIONER
7	16006-026	1	PULLEY, TENSIONER
8	16006-020	1	PULLEY, DRIVE
9	16006-005	2	PULLEY, TIMING, 14XL075, 1/2 BORE
10	16006-006	1	PULLEY, TIMING, 22XL075, 1/2 BORE
11	16006-021	1	PULLEY, TIMING, 22XL075, 5/8 BORE
12	99000-159	1	BELT, TIMING, 150XL075
13	99000-060	1	BELT, TIMING, 100XL075
14	99003-063	4	BEARING, 5/8 X 1-3/8 (HI TEMP GREASE)
15	99017-005	2	COLLAR, SHAFT, 5/8
16	99003-084	4	WASHER, STEEL, 5/8 X 1/16
17	99003-047	2	BEARING, 1/2 X 1-1/8 (HI TEMP GREASE)
18	99003-018	2	WASHER, NYLON, 1/2 X 1/16
19	99022-004	1	SNAP RING, 1/2
20		4	SCREW, SKT HEAD, 10-24 X 3/4

FIG. 5

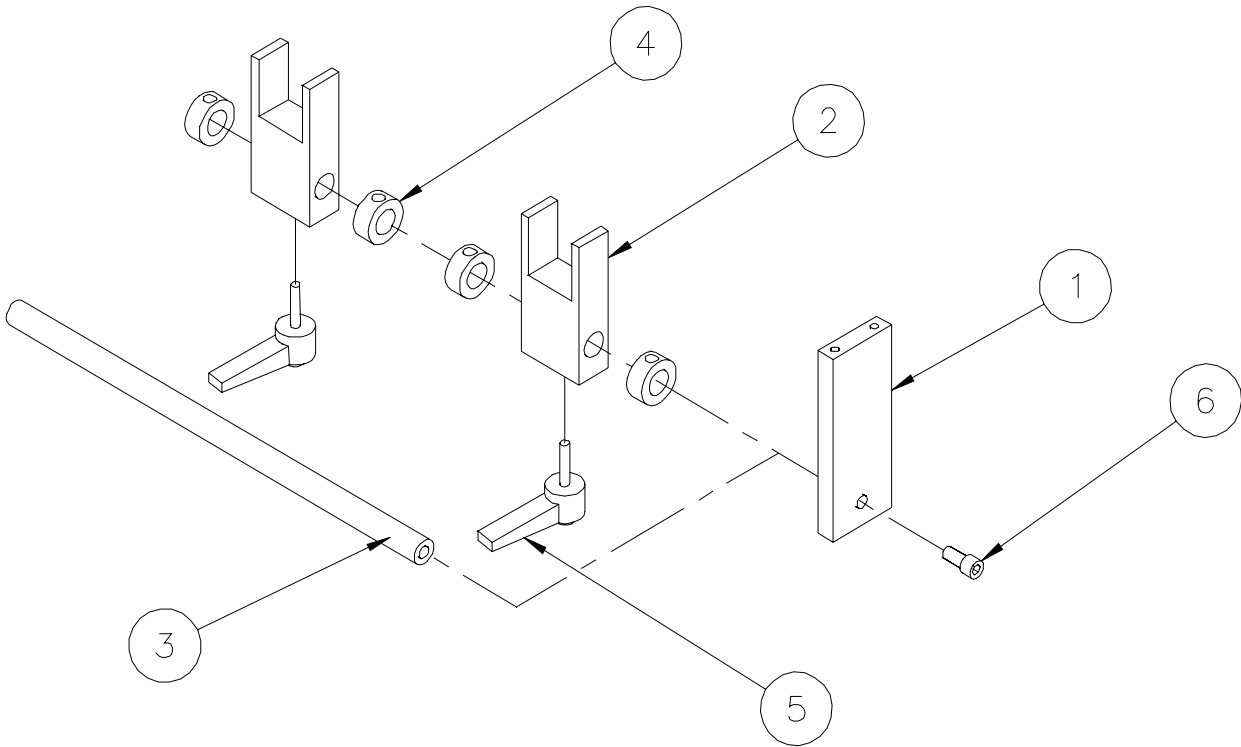


Sure-Feed
Engineering Inc

DRYER BASE SYSTEM – CONVEYOR DRIVE (Fig. 6)
BELT GUIDE ASSEMBLY

ITEM	PART NO.	QTY.	DESCRIPTION
1	16009-002	1	BRACKET, BELT GUIDE SUPPORT
2	16005-003	2	BLOCK, BELT GUIDE, 1" (STEEL)
3	16004-011	1	SHAFT, BELT GUIDE
4	99017-004	4	COLLAR, SHAFT, 1/2"
5	99004-003	2	HANDLE, RACHET, 10-24 X 1/2
6		1	SCREW, SKT HEAD, 1/4-20 X 5/8

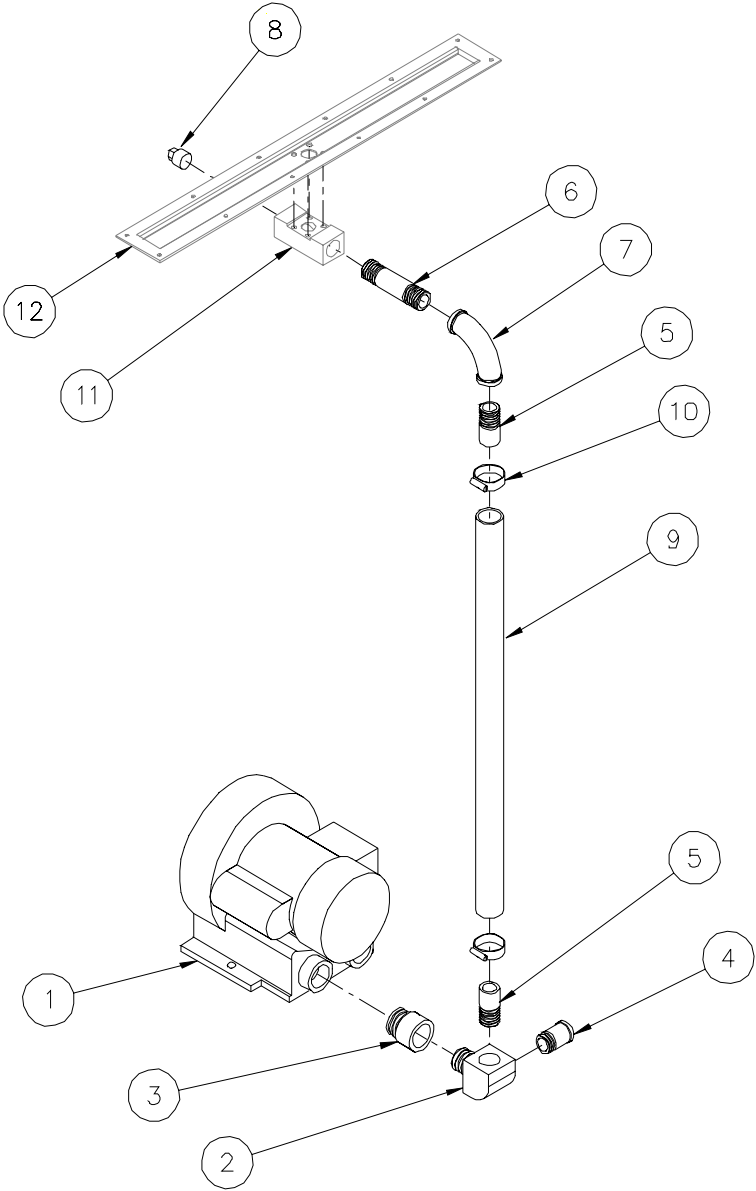
FIG. 6



DRYER BASE SYSTEM (Fig. 7)
VACUUM ASSEMBLY

ITEM	PART NO.	QTY.	DESCRIPTION
1	99028-003	1	BLOWER, VACUUM
2	99028-127	1	FITTING, BRASS ELBOW, 90 DEG, 3/4" NPT MALE X FEMALE
3	99028-101	1	FITTING, BRASS REDUCER, 3/4" NPT FEMALE X 1" NPT MALE
4	99025-024	1	VALVE, VACUUM RELIEF
5	16018-013	2	NIPPLE, BRASS, 3/4" NPT X 2"
6	99028-057	1	NIPPLE, BRASS, 3/4" NPT X 4"
7	99028-058	1	ELBOW, BRASS, 3/4 " NPT FEMALE
8	99028-059	1	PLUG, BRASS, 3/4" NPT
9	99031-006	24 in	HOSE, REINFORCED EDPM, 1" ID
10	99031-007	2	HOSE CLAMP, SST, 1-1/16 X 2
11	16007-053	REF	BLOCK, VACUUM CHAMBER
12	16013-063	REF	VACUUM CHAMBER, DRYER

FIG. 7



**DRYER BASE SYSTEM (Fig. 8)
 ELECTRICAL ENCLOSURE**

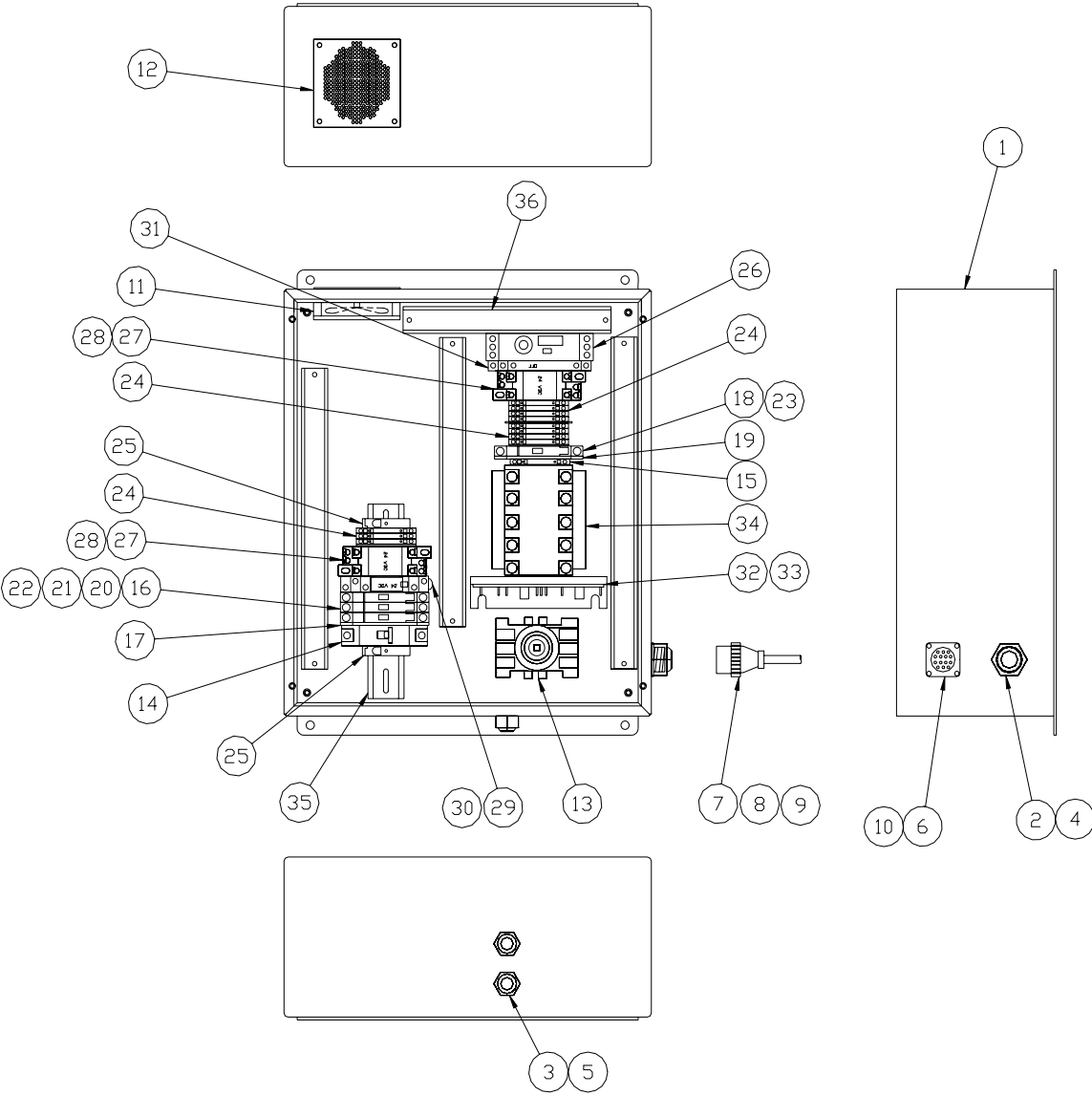
ITEM	PART NO.	QTY.	DESCRIPTION
1	18013-111	1	ELECTRICAL ENCLOSURE
2	98015-002	1	STRAIN RELIEF, 3/4"
3	98015-001	2	STRAIN RELIEF, 1/2"
4	98015-003	1	LOCK NUT, 3/4"
5	98015-004	2	LOCK NUT, 1/2"
6	98016-091	1	RECEPTICAL, SQ FL, 17-14 FEMALE
7	98016-092	1	PLUG, 17-14 MALE
8	98016-005	1	BACKSHELL, PLASTIC, SIZE 17
9	98016-114	14	PIN CONTACTS
10	98016-027	14	SOCKET CONTACTS
11	98020-059	1	FAN, 24 VDC
12	98020-051	1	FAN GAURD
13	98000-022	1	SWITCH ASSEMBLY, POWER DISCONNECT
13A	98000-024	1	SWITCH, DISCONNECT, 3-POLE 40A
13B	98000-025	1	SHAFT, DISCONNECT SWITCH
13C	98000-026	1	SWITCH OPERATOR (RED/ YELLOW)
14	98004-038	1	CIRCUIT BREAKER, 8 AMP, 2-POLE
15	98001-049	1	GROUND TERMINAL, SCREW TYPE
16	98001-011	3	FUSE BLOCK, ENTRELEC
17	98001-046	1	SIDE COVER, FUSE BLOCK
18	98001-012	1	FUSE BLOCK, SPRING TYPE
19	98001-020	1	SIDE COVER, SPRING FUSE
20	98004-033	1	FUSE, 8 AMP, 250V
21	98004-007	1	FUSE, 6 AMP, 250V
22	98004-023	1	FUSE, 2 AMP, 250V

**DRYER BASE SYSTEM (Fig. 8)
 ELECTRICAL ENCLOSURE**

ITEM	PART NO.	QTY.	DESCRIPTION
23	98004-017	1	FUSE, 1 AMP, 250V
24	98001-010	11	TERMINAL BLOCK
25	98001-014	2	END STOP, DIN RAIL
26		1	RELAY, TIME DELAY
27	98002-005	2	SOCKET, RELAY, PRESSURE CLAMP TYPE
28	98002-007	2	RELAY, DPDT, 24 VDC
29	98002-012	1	SOCKET, RELAY, PRESSURE CLAMP TYPE
30	98002-011	1	RELAY, SPST, 24 VDC
31	98013-015	1	OPTO ISOLATOR, OFF
32	98005-007	1	MOTOR CONTROLLER, 115/230 VAC, 90 VDC
33	98006-026	1	POWER RESISTOR, .025 OHM
34	98011-005	1	POWER SUPPLY, 30 WATT
35	98001-022	16 in	DIN RAIL
36	98012-004	45 in	DUCT, WIREWAY W/ COVER, 1" X 1"

Sure-Feed
Engineering Inc

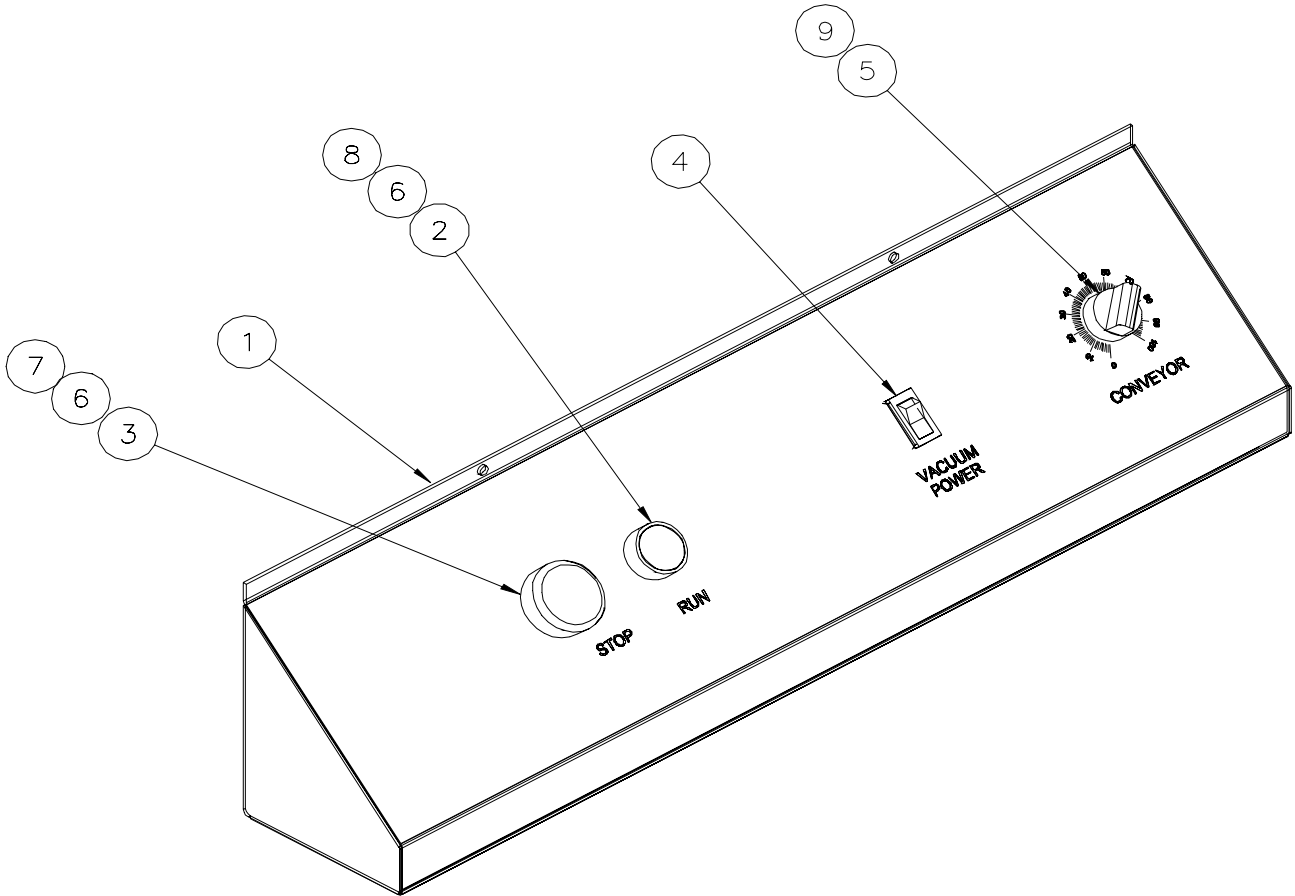
FIG. 8



DRYER BASE SYSTEM (Fig. 9)
ELECTRICAL CONTROL CONSOLE

ITEM	PART NO.	QTY.	DESCRIPTION
1	16013-033	REF	ENCLOSURE, CONTROL CONSOLE
2	98000-030	1	SWITCH, PUSH BUTTON, GREEN ROUND
3	98000-049	1	SWITCH, STOP, BLACK MUSHROOM
4	98000-041	1	SWITCH, POWER, WHITE ROCKER
5	98006-010	1	POT, SPEED CONTROL, 10K
6	98000-027	1	CLIP, SWITCH ASSEMBLY
7	98000-038	1	CONTACT BLOCK, 1 X NC
8	98000-028	1	CONTACT BLOCK, 1 X NO
9	98019-015	1	KNOB, SPEED POT

FIG. 9



**DRYER BASE SYSTEM (Fig. 10)
 ELECTRICAL ASSEMBLY**

ITEM	PART NO.	QTY.	DESCRIPTION
1	98020-059	1	FAN, 24 VDC
2	98020-051	1	FAN GAURD
3	98015-002	1	STRAIN RELIEF, 3/4"
4	98015-003	1	LOCK NUT, 3/4"
5	98003-010	1	PLUG, HUBBEL, 115 VAC
6	98003-034	1	RECEPTICAL, FLANGED INLET, MIDGET TWIST LOCK
7	98003-018	1	PLUG, HUBBEL TWIST LOCK
8	98016-115	1	CONNECTOR, MALE, 3-POS
9	98016-116	1	CONNECTOR, FEMALE, 3-POS
10	98016-056	3	SOCKET CONTACTS
11	98016-057	3	PIN CONTACTS
12	98009-022	1	SENSOR, OMRON

Sure-Feed
Engineering Inc

FIG. 10

