

# ***STANDARD SPEED SORT CONVEYOR***

***Parts Manual***



**SURE-FEED**  
engineering, inc.

3360 Scherer Drive St. Petersburg, FL 33716

PHONE: 727.571.3330 FAX: 727.571.3443 1-800-INSERTER

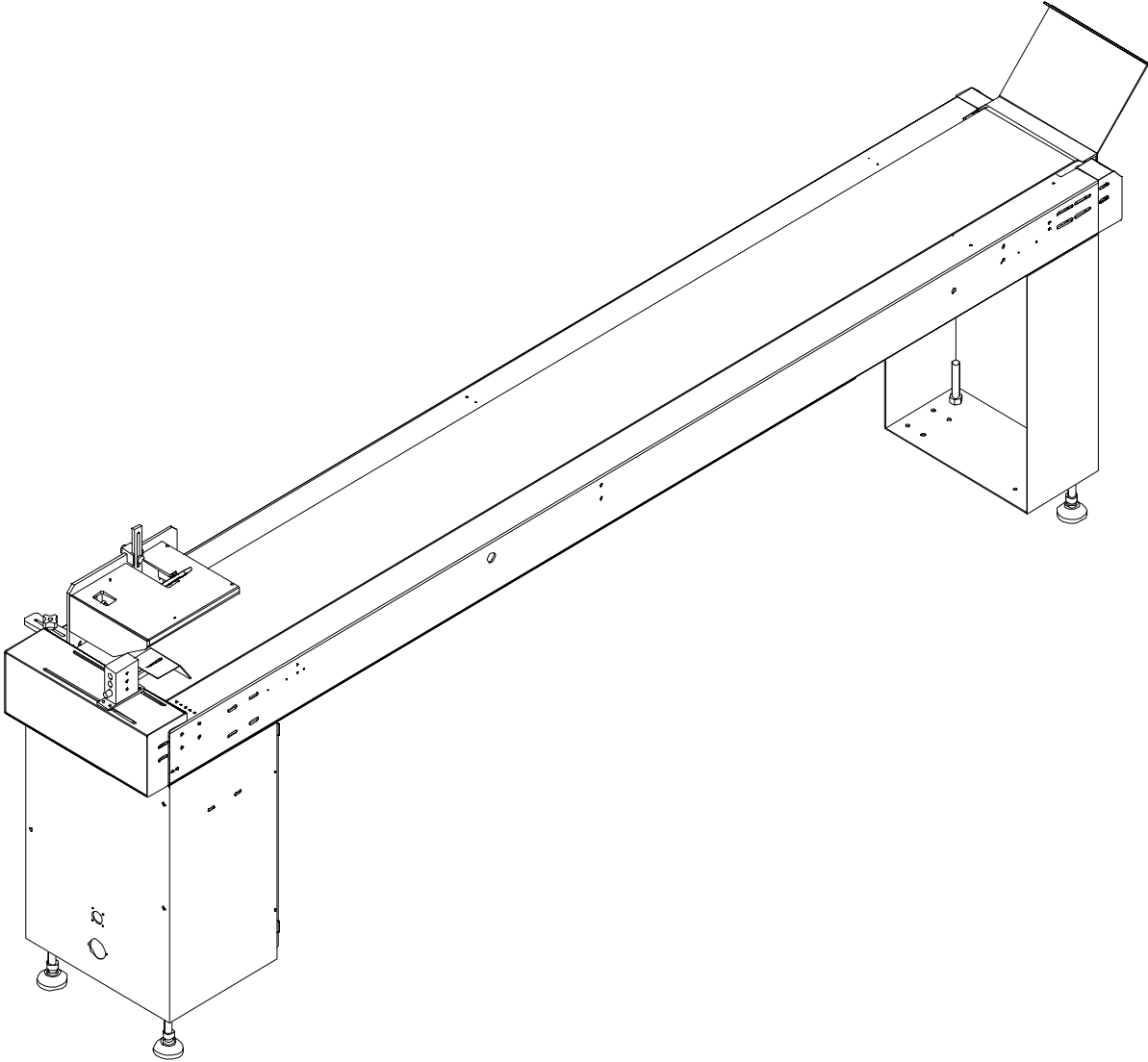
[www.sure-feed.com](http://www.sure-feed.com)

***TABLE OF CONTENTS***

**SPEED SORT CONVEYOR**

SPEED SORT CONVEYOR ASSEMBLY (Fig. 1)..... 3  
DRIVE ASSEMBLY (Fig. 2)..... 5  
IDLER ASSEMBLY (Fig. 3) ..... 7  
SORTER ASSEMBLY (Fig. 4)..... 9  
PNEUMATICS ASSEMBLY (Fig. 5)..... 11  
ELECTRICAL ASSEMBLY (Fig. 6)..... 13

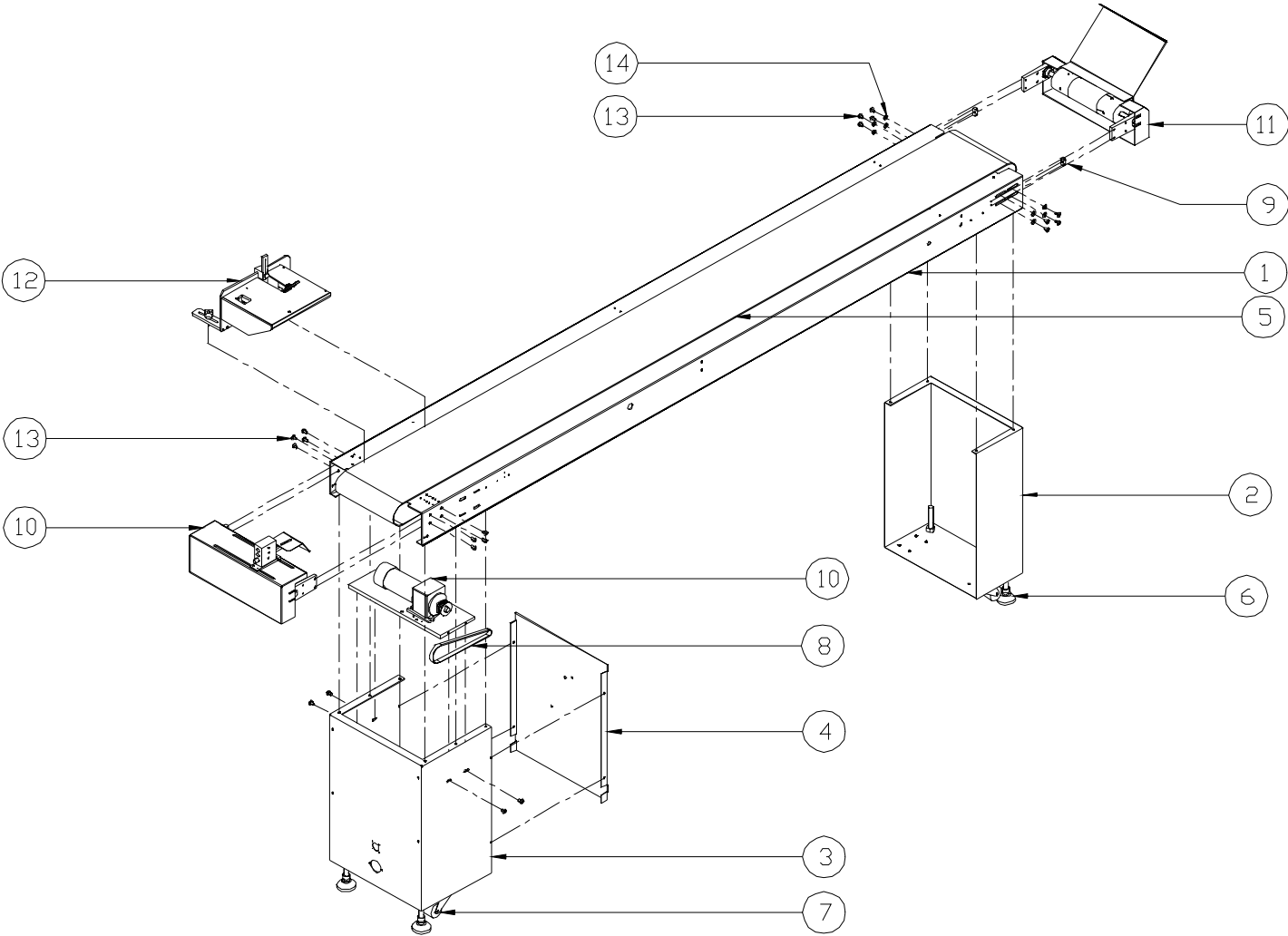
***SPEED SORT CONVEYOR***



**SPEED SORT CONVEYOR ASSEMBLY (Fig. 1)**

<b>ITEM</b>	<b>PART NO.</b>	<b>QTY.</b>	<b>DESCRIPTION</b>
1	12000-007	1	SIDEFAME, SHINGLE CONVEYOR
2	12010-003	1	LEG, CONVEYOR IDLER, 30"
3	12010-004	1	LEG, CONVEYOR DRIVE, 30"
4	12013-024	1	GUARD, CONVEYOR DRIVE LEG
5	99000-117	1	BELT, ENDLESS, 10"W X 18'-1" LONG
6	99010-001	4	FOOT, ADJUSTABLE, 5/8-11
7	99010-002	4	CASTOR, 2" DIAM., DOUBLE WHEEL
8	99000-063	1	BELT, TIMING, 210L050
9	12007-002	2	BLOCK, BEARING ADJUSTING
10	SEE FIG. 2	1	DRIVE ASSEMBLY
11	SEE FIG. 3	1	IDLER ASSEMBLY
12	SEE FIG. 4	1	SPEED SORTER ASSEMBLY
13		20	SCREW, BUT HD, 1/4-20 X 1/2
14		8	WASHER, FLAT, 1/4

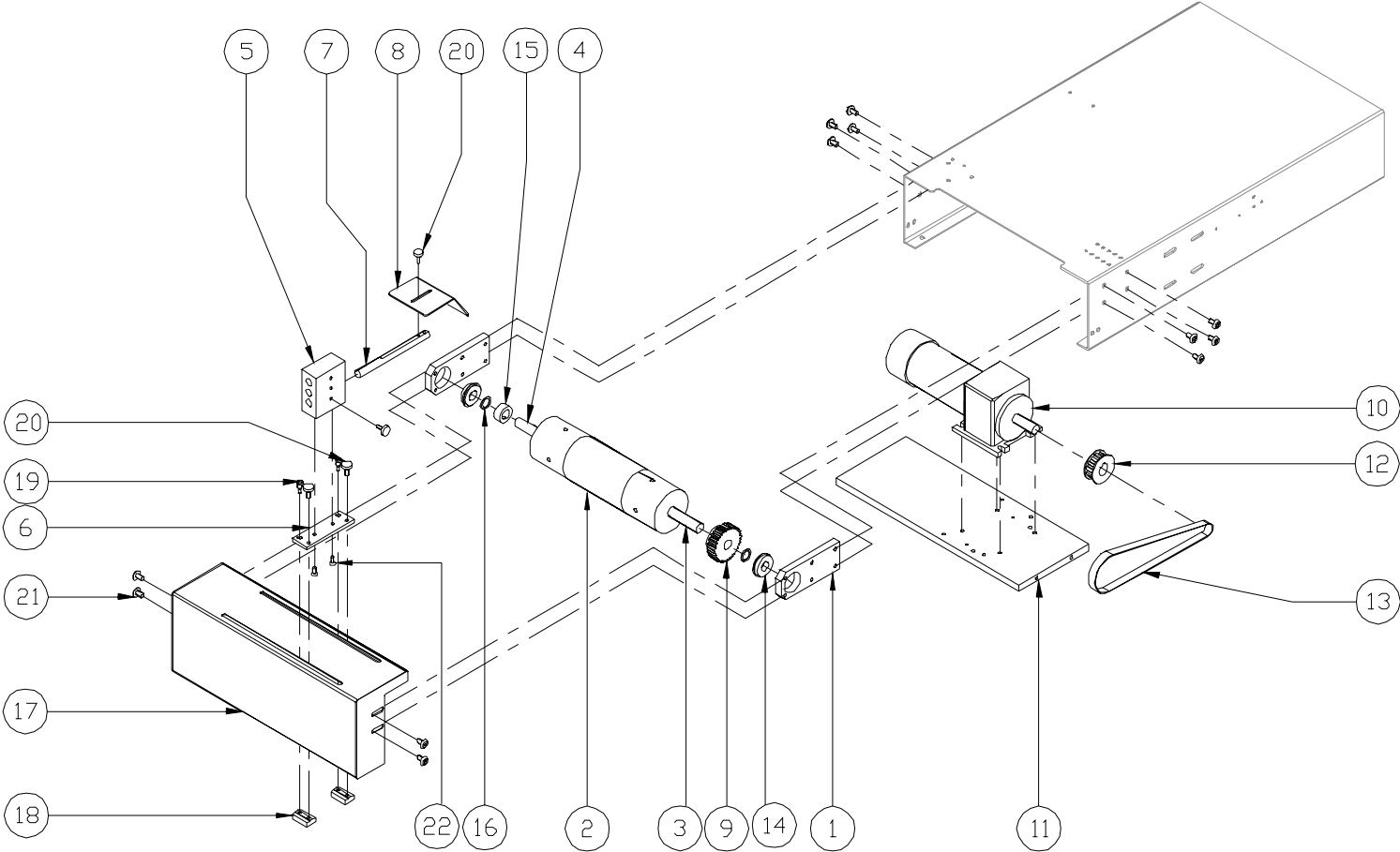
**FIG. 1**



**SPEED SORT CONVEYOR (Fig. 2)  
DRIVE ASSEMBLY**

<b>ITEM</b>	<b>PART NO.</b>	<b>QTY.</b>	<b>DESCRIPTION</b>
1	12007-001	2	BLOCK, BEARING
2	12006-018	1	PULLEY, 10" CROWNED
3	12004-012	1	SHAFT, STUB DRIVE
4	12004-013	1	SHAFT, STUB IDLER
5	12007-028	1	BLOCK, KNOCK DOWN MTG.
6	12008-020	1	BAR, KNOCK DOWN SUPPORT
7	12004-040	1	SHAFT, GUIDE SUPPORT
8	10005-103	1	WEDGE, GUIDE
9	99002-047	1	PULLEY, 20L050, 5/8 BORE
10	99001-014	1	GEAR MOTOR, 1/8 HP, 167 RPM
11	12011-005	1	PLATE, MOTOR MTG.
12	99002-041	1	PULLEY, 14L050, 5/8 BORE
13	99000-063	1	BELT, TIMING, 210L050
14	99003-006	2	BEARING, SEALED, 5/8 X 1-3/8 (W/ SNAP RING)
15	99017-029	1	COLLAR, CALMP ON, 5/8
16	99003-021	2	WASHER, NYLON, 5/8
17	12013-018	1	ENC CAP, DRIVE END W/ SLOTS
18	12007-029	2	TEE NUT, KNOCK DOWN
19	99033-006	2	SHOULDER BOLT, 1/4 X 1/4
20	99004-002	4	KNOB, #10 SCREW
21		4	SCREW, BUTTON HD, 1/4-20 X 1/2
22		2	SCREW, FLAT HD, #10-24 X 3/8

**FIG. 2**

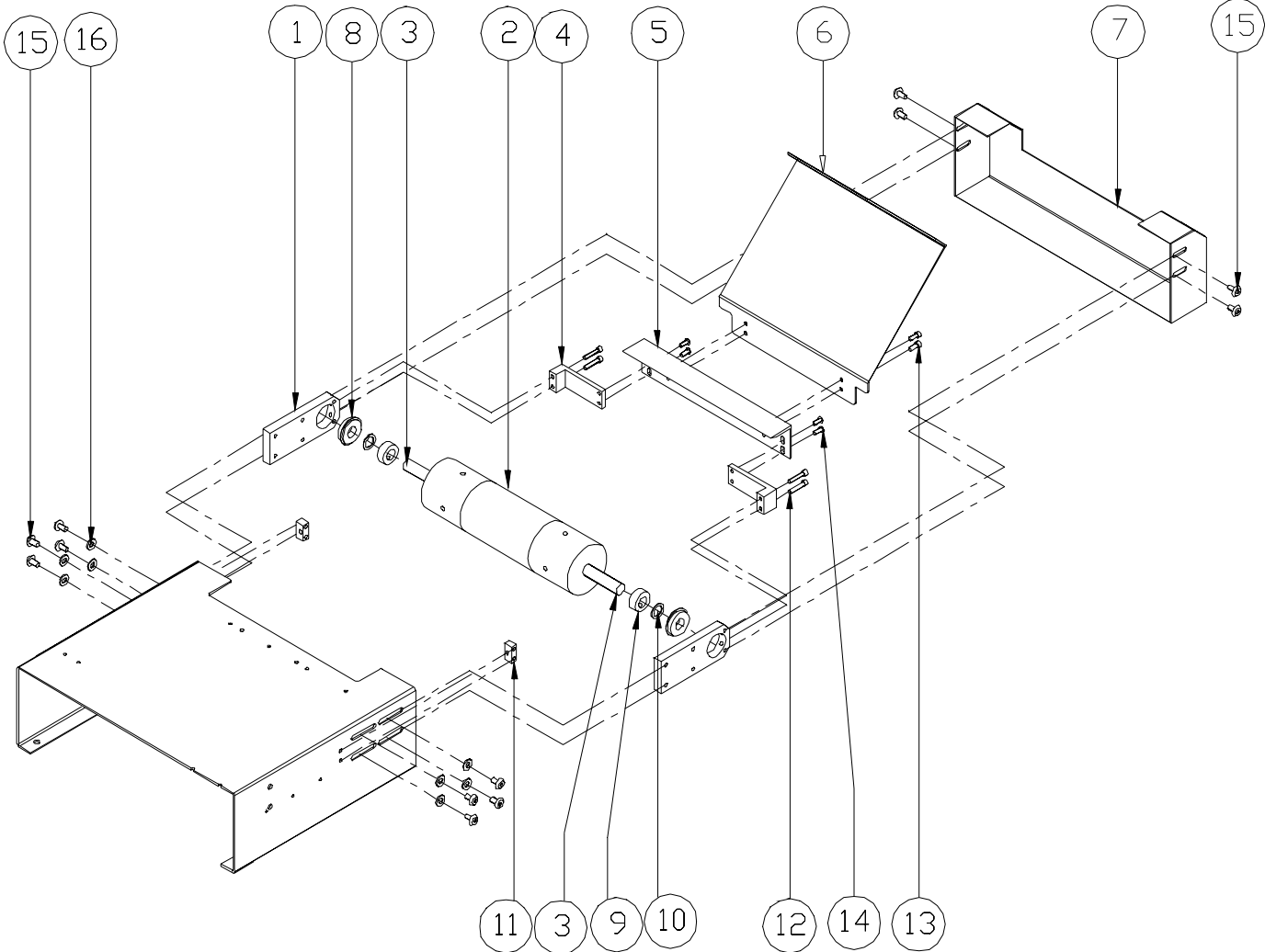


**SPEED SORT CONVEYOR (Fig. 3)  
IDLER ASSEMBLY**

<b>ITEM</b>	<b>PART NO.</b>	<b>QTY.</b>	<b>DESCRIPTION</b>
1	12007-033	2	BLOCK, BEARING MTG.
2	12006-018	1	PULLEY, 10" CROWNED
3	12004-013	2	SHAFT, STUB IDLER
4	12007-032	2	BLOCK, GUIDE MTG.
5	12005-027	1	GUIDE, DISCHARGE TRANSFER
6	12011-035	1	PLATE, ACCUMULATOR
7	12013-021	1	END CAP, IDLER ROLLER
8	99003-006	2	BEARING, 5/8 X 1-3/8, SEALED W/ S.R.
9	99017-029	2	COLLAR, CLAMP ON, 5/8
10	99003-021	2	WASHER, NYLON, 5/8 X 1/16
11	12007-002	2	BLOCK, BEARING ADJ.
12		4	SCREW, SKT HD, #10-24 X 1-1/4
13		4	SCREW, SKT HD, #10-24 X 3/8
14		4	SCREW, BUTTON HD, #10-24 X 3/4
15		12	SCREW, BUTTON HD, 1/4-20 X 1/2
16		12	WASHER, FLAT, 1/4



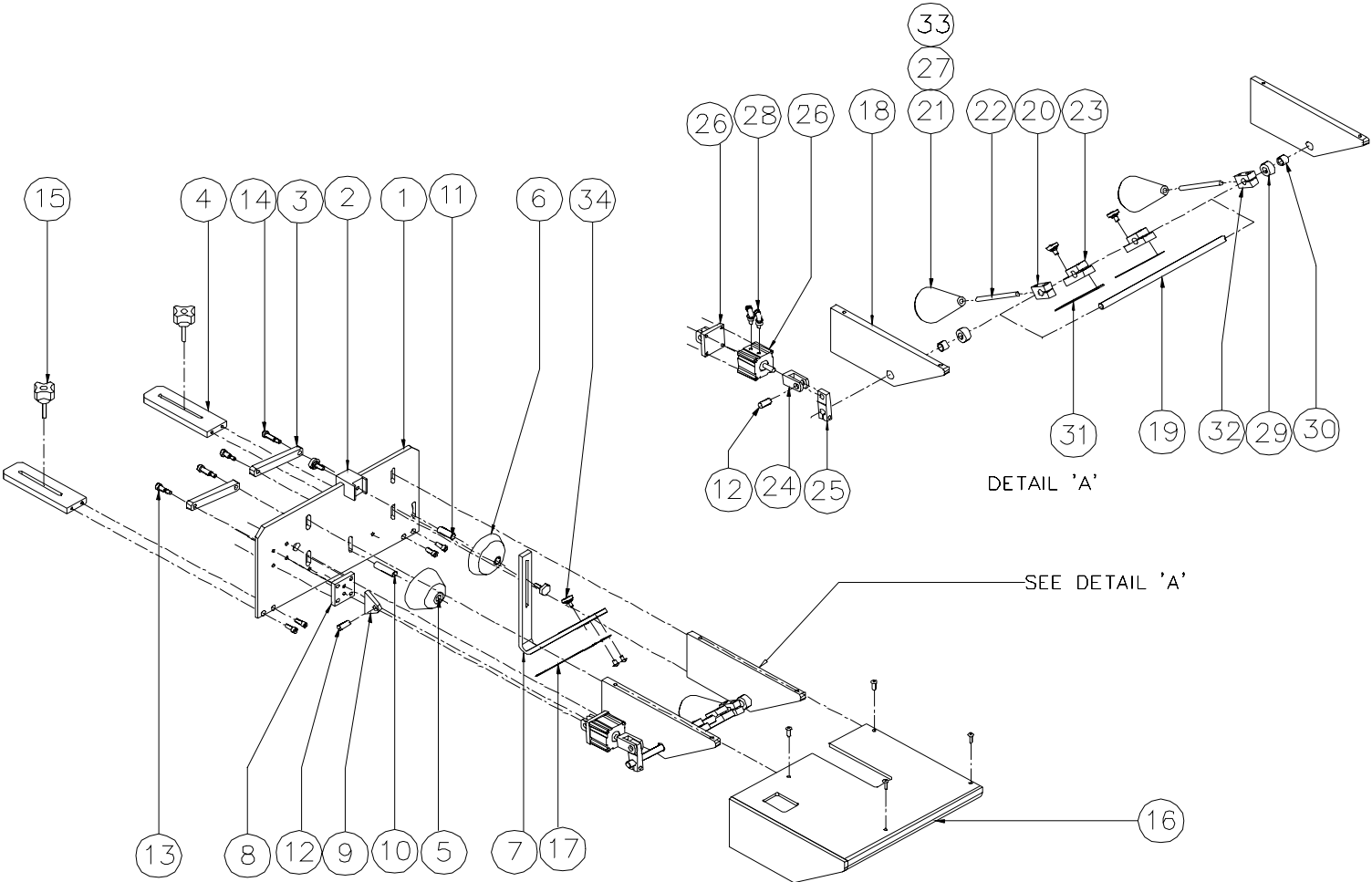
*FIG. 3*



**SPEED SORT CONVEYOR (Fig. 4)  
SORTER ASSEMBLY**

<b>ITEM</b>	<b>PART NO.</b>	<b>QTY.</b>	<b>DESCRIPTION</b>
1	12011-033	1	PLATE, SPEED SORT MTG.
2	12007-007	1	BRACKET, KNOCK DOWN ADJ.
3	12008-021	2	BAR, ROLLER MTG.
4	12007-006	2	BAR, PLATE, ADJ
5	12006-023	1	CONE, STOP (LONG)
6	12006-022	1	CONE, STOP (SHORT)
7	20008-001	1	BAR, KNOCKDOWN SUPPORT
8	12007-031	1	BLOCK, CLEVIS MTG.
9	12007-030	1	BLOCK, CLEVIS
10	12004-034	1	SHAFT, 1-3/8" ROLLER
11	12004-033	1	SHAFDT, 1" ROLLER
12	99014-019	2	PIN, CLEVIS
13	99033-004	2	BOLT, SHOULDER, 1/4 X 3/8
14	99033-002	2	BOLT, SHOULDER, 1/4 X 5/8
15	99004-019	2	KNOB, MALE, #10-24
16	12013-019	1	COVER, SPEED SORT
17	12005-007	1	STRAP, KNOCKDOWN
18	12011-034	2	PLATE, SIDE MTG.
19	12004-032	1	SHAFT, CONE PIVOT
20	12009-009	1	BRACKET, KNOCKDOWN ADJ.
21	12006-021	2	CONE, DISCHARGE
22	12004-030	2	SHAFT, CONE SUPPORT
23	21009-016	2	BRACKET, SPRING STEEL
24	99014-018	2	CLEVIS, DOUBLE ROD
25	12009-011	1	BRACKET, CYLINDER
26	99014-016	1	CYLINDER, COMPACT, 200 mmB X 12mm ST
27	99003-089	2	BUSHING, SLEEVE, 1/4 X 3/8 X 7/8
28	99028-126	2	FITTING, FLO-CONTROL, #10-32 X 1/4 TUBE
29	99017-003	3	COLLAR, SET, 3/8
30	99003-077	2	BUSHING, SLEEVE, 3/8 X 1/2 X 3/8
31	12005-031	2	GUIDE, SPRING STEEL
32	12009-010	1	BRACKET, CONE PIVOT
33	99003-090	2	BUSHING, SLEEVE, 1/4 X 3/8 X 1
34	99004-002	5	THUMBSCREW, #10

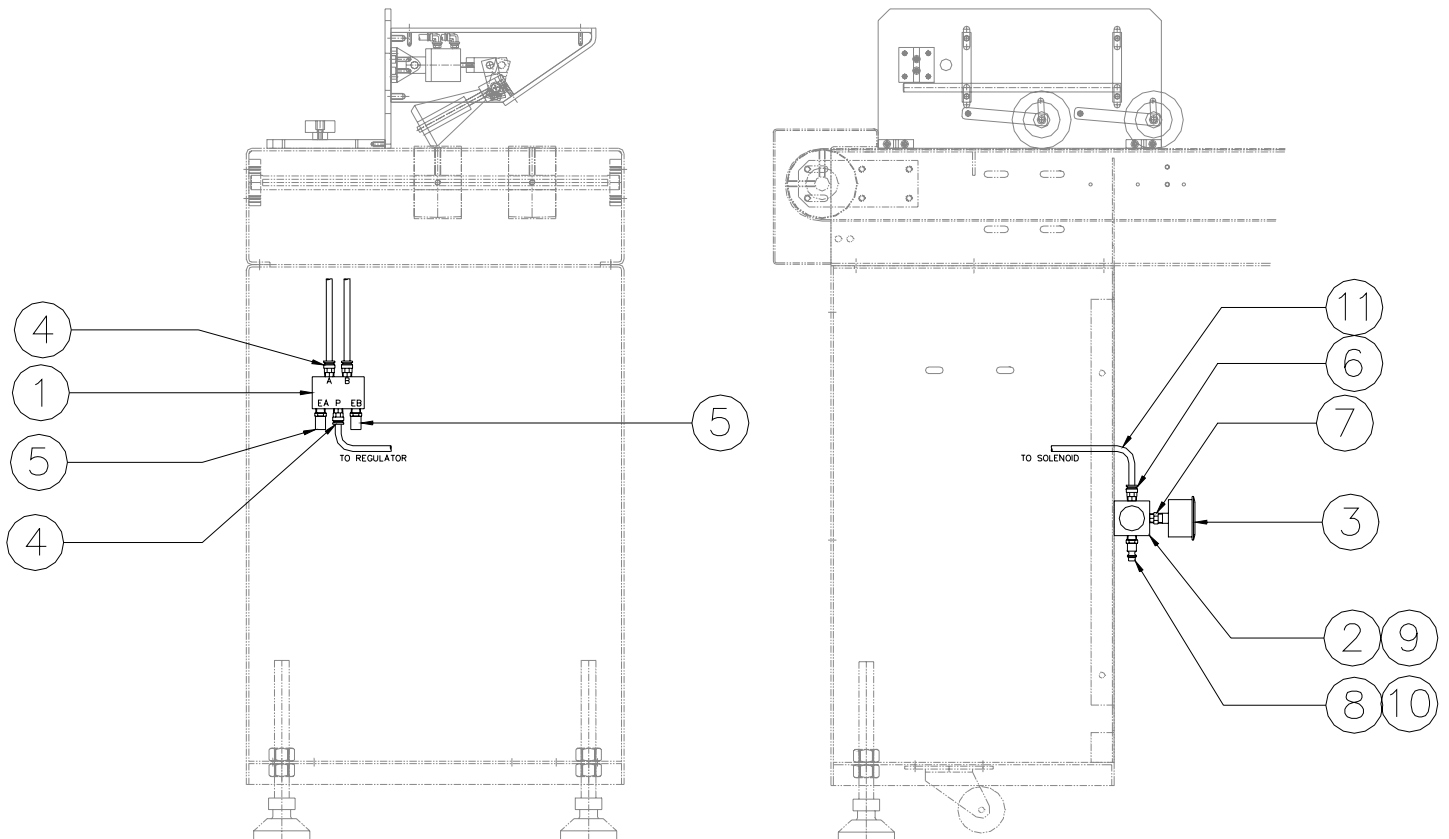
**FIG. 4**



**SPEED SORT CONVEYOR (Fig. 5)  
PNEUMATICS ASSEMBLY**

<b>ITEM</b>	<b>PART NO.</b>	<b>QTY.</b>	<b>DESCRIPTION</b>
1	99025-012	1	SOLENOID, 2-POS, 24V DC
2	99026-015	1	REGULATOR
3	99030-003	1	GAUGE, 0-160 PSI
4	99028-082	3	FITTING, MALE CONNECTOR, 1/4 NPT X 1/4 TUBE
5	99028-006	2	MUFFLER, 1/4 NPT
6	99028-016	1	FITTING, MALE CONNECTOR, 1/8 NPT X 1/4 TUBE
7	99028-120	1	BUSHING, 1/4 NPT MALE X 1/4 NPT FEMALE
8	99028-119	1	COUPLING, QUICK DISCONNECT, 1/4 X 1/4 NPT
9	99026-007	1	BRACKET, REGULATOR MTG.
10	99028-118	1	ADAPTOR, 1/8 NPT MALE X 1/4 NPT FEMALE
11	99031-012	8 ft	HOSE, CLEAR, 1/4

**FIG. 5**



**SPEED SORT CONVEYOR (Fig. 6)  
ELECTRICAL ASSEMBLY**

<b>ITEM</b>	<b>PART NO.</b>	<b>QTY.</b>	<b>DESCRIPTION</b>
1	98016-023	3	CONNECTOR, 2-POS MALE, .093
2	98016-024	3	CONNECTOR, 2-POS FEMALE, .093
3	98015-001	1	STRAIN RELIEF, 1/2"
4	98016-074	1	RECEPTICAL, FLANGED, 3-PIN
5	98006-037	1	SPEED POT, 1 MEG
6	98016-036	1	SPEED POT, 10K
7	98006-021	2	KNOB, SPEED POT
8	98006-004	1	DIAL, SPEED POT
9	98004-001	1	CIRCUIT BREAKER, 2 AMP
10	98005-001	1	MOTOR CONTROLLER, 90V DC
11	98006-002	1	RAW I/O BOARD
12	98001-001	1	TERMINAL STRIP, 10-CONNECTION
13	98008-001	1	TANSFORMER, 24 VAC
14	98016-011	1	RECEPTICAL, SQ FL, 4-POS FEMALE
15	12013-016	1	ENCLOSURE, ELECTRICAL
16	12013-017	1	COVER, ENCLOSURE
17	98016-115	3	CONNECTOR, 3-POS MALE, .093
18	98016-116	3	CONNECTOR, 3-POS FEMALE, .093
19	98009-023	1	SENSOR, PHOTOELECTRIC TRIGGER
20	98016-062	1	CONNECTOR, 6-POS MALE, .093 (NOT SHOWN)
21	98016-063	1	CONNECTOR, 6-POS FEMALE, .093 (NOT SHOWN)
22	98016-036	4	QUICK CONNECT, .250 (NOT SHOWN)

**FIG. 6**

