

# **SE-1200-EI**

# **Envelope Inserter**

# **FEEDER**

## **REPLACE-A-STATION SERIES**

*Model SE-Dynamic Rotation Technology*

# ***Parts Manual***



***SURE-FEED ENGINEERING***

12050 49th STREET NORTH - CLEARWATER, FL. 33762-4301  
PHONE: 727.571.3330 - FAX: 727.571.3443 - TOLL FREE: 1.800.INSERTER  
web: [sure-feed.com](http://sure-feed.com)

## **VERSION HISTORY**

The table below summarizes the history of this document as it is published onto the company website(s). It identifies the version, date of issue and revisions and changes.

VERSION	DATE	CHANGES
1200-EI_PARTS_REV0	1-24-08	ORIGINAL RELEASE
1200-EI_PARTS_REVA	6-19-08	CORRECTED, added shroudless separator
1200-EI-SE_PARTS_REVB	9-29-08	RENAMED & CORRECTED per page notations

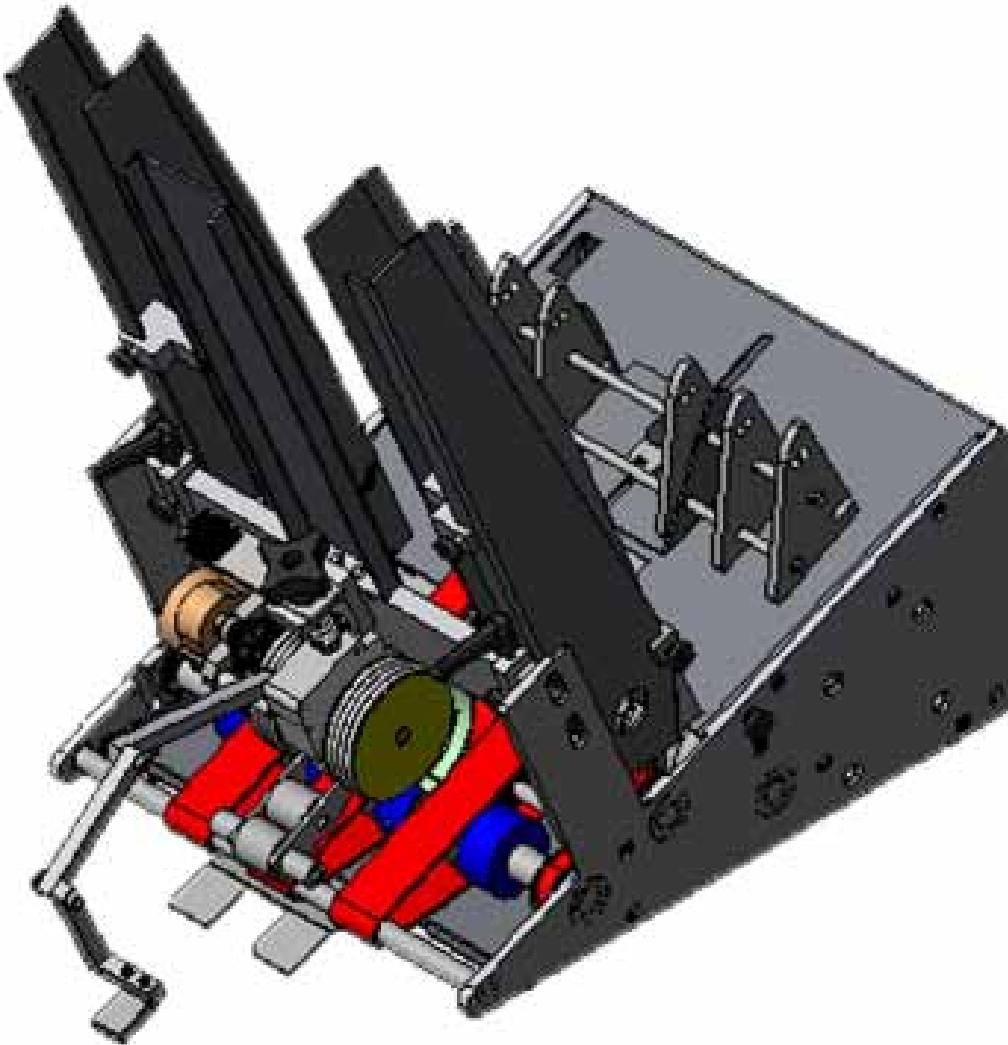
### **REVISION CONVENTIONS-DOCUMENT**

**VERSION:** name of document with revision\_level of entire document- level designates minor changes that do not require revision change

**DATE:** date of issue for copying and publication of document.

**CHANGES:** details of document revision\_level.

# **SE-1200 EI FEEDER**



# TABLE OF CONTENTS

## SE-1200 EI FEEDER

<b>FEEDER ASSEMBLY (FIG. 1, 1a)</b>	4-5, 5a
<b>110V SEPARATOR W/CROSSBAR (FIG. 2, 2rA)</b>	6, 6a
<b>110V SEPARATOR-SHROUDED (FIG. 2A)</b>	7-8
<b>110V SEPARATOR-SHROUDLESS (FIG. 2ArB)</b>	7a-8a
<b>FRONT SHAFT (FIG. 3)</b>	9
<b>NIP ROLLER SHAFT (FIG. 4)</b>	10
<b>MAIN SHAFT (FIG. 5)</b>	11
<b>CLUTCH SHAFT (FIG. 6)</b>	12
<b>IDLER SUPPORT SHAFT (FIG. 7)</b>	13
<b>ELEVATOR SHAFT (FIG. 8)</b>	14
<b>MOTOR (FIG. 9)</b>	15
<b>CHASSIS (FIG. 10)</b>	16-17
<b>SENSOR ARM (FIG. 11)</b>	18
<b>TRAILING ARM (FIG. 12)</b>	19
<b>SIDE GUIDES (FIG. 13)</b>	20
<b>PAPER SLIDE (FIG. 14)</b>	21
<b>KNOCKDOWN (FIG. 15)</b>	22
<b>ELECTRICAL (FIG. 16)</b>	23

**1200 EI FEEDER ASSEMBLY (Fig. 1)  
(10022-047r0)**

<b>ITEM</b>	<b>PART NO.</b>	<b>QTY.</b>	<b>DESCRIPTION</b>
1	SEE FIG. 2	1	ASSY, 110V SEPARATOR W/CROSSBAR (10020-470)
2	SEE FIG. 3	1	ASSEMBLY, FRONT SHAFT (10020-022)
3	SEE FIG. 4	1	ASSEMBLY, NIP ROLLER SHAFT (10020-030)
4	SEE FIG. 5	1	ASSEMBLY, MAIN SHAFT (10020-045)
5	SEE FIG. 6	1	ASSEMBLY, CLUTCH SHAFT (10020-053)
6	SEE FIG. 7	1	ASSEMBLY, IDLER SUPPORT SHAFT (10020-037)
7	SEE FIG. 8	1	ASSEMBLY, ELEVATOR SHAFT (10020-057)
8	SEE FIG. 9	1	ASSEMBLY, MOTOR (10020-061)
9	SEE FIG. 10	1	ASSEMBLY, CHASSIS (10020-070)
10	SEE FIG. 11	1	ASSEMBLY, SENSOR ARM (10020-007)
11	SEE FIG. 12	1	ASSEMBLY, TRAILING ARM (10020-072)
12	SEE FIG. 13	1	ASSEMBLY, SIDE GUIDES (10020-010)
13	SEE FIG. 14	1	ASSEMBLY, PAPER SLIDE (10020-058)
14	17005-002	1	GUIDE, EXTENSION
15	99000-004	3	BELT, RED GUM
16	99000-005	2	BELT, ELEVATOR (RED)
17	99000-001	1	BELT, TIMING, 90XL037
18	99000-003	1	BELT, TIMING, 120XL037
19	99000-002	1	BELT, TIMING, 110XL037
20	-	2	SCREW, SKT HEAD, #10-24 X 3/8
21	-	2	NUT, HEX, #10-24
<b>REF</b>	<b>SEE FIG. 15</b>	<b>1</b>	<b>ASSEMBLY, KNOCKDOWN (10017-001)</b>

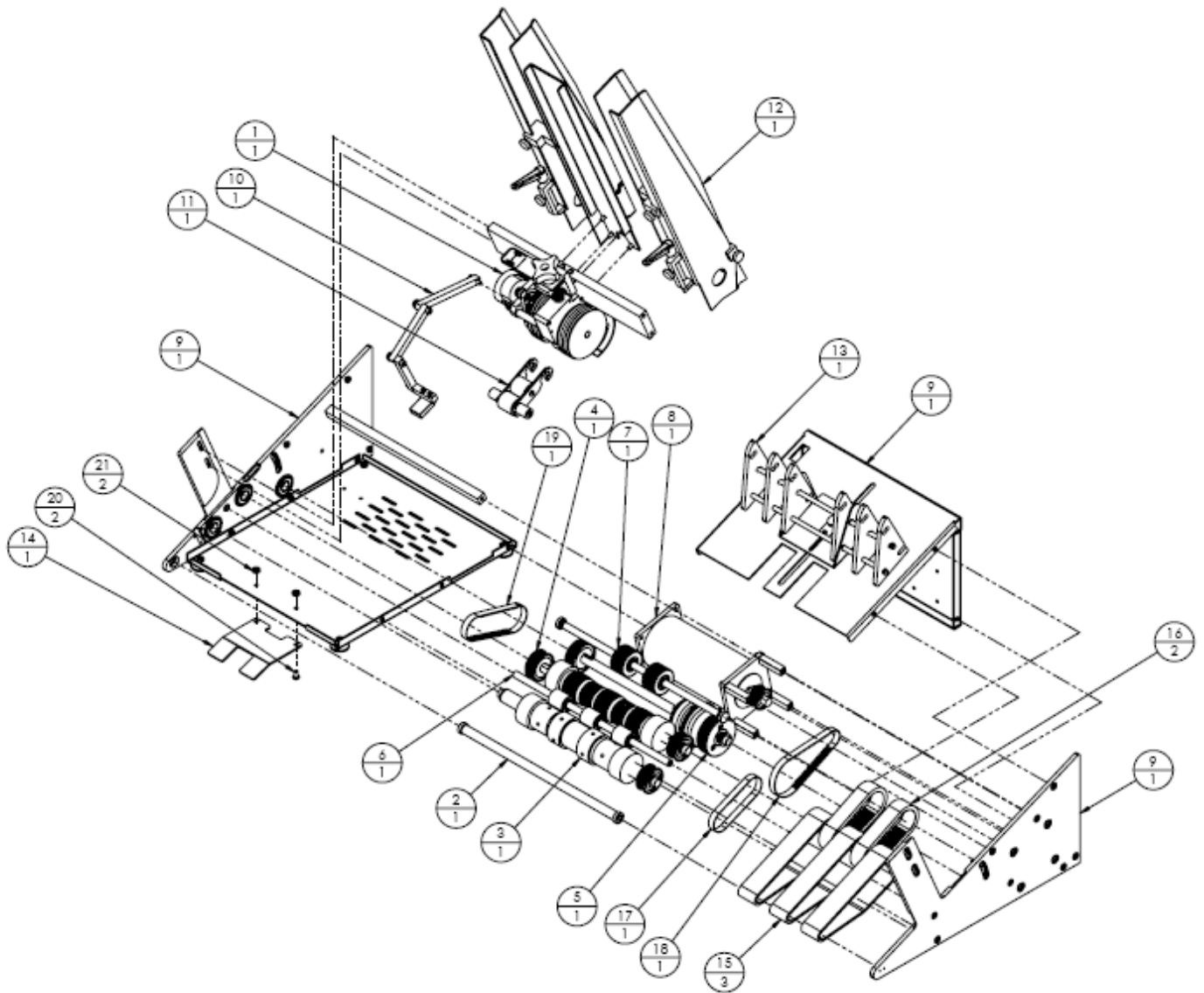
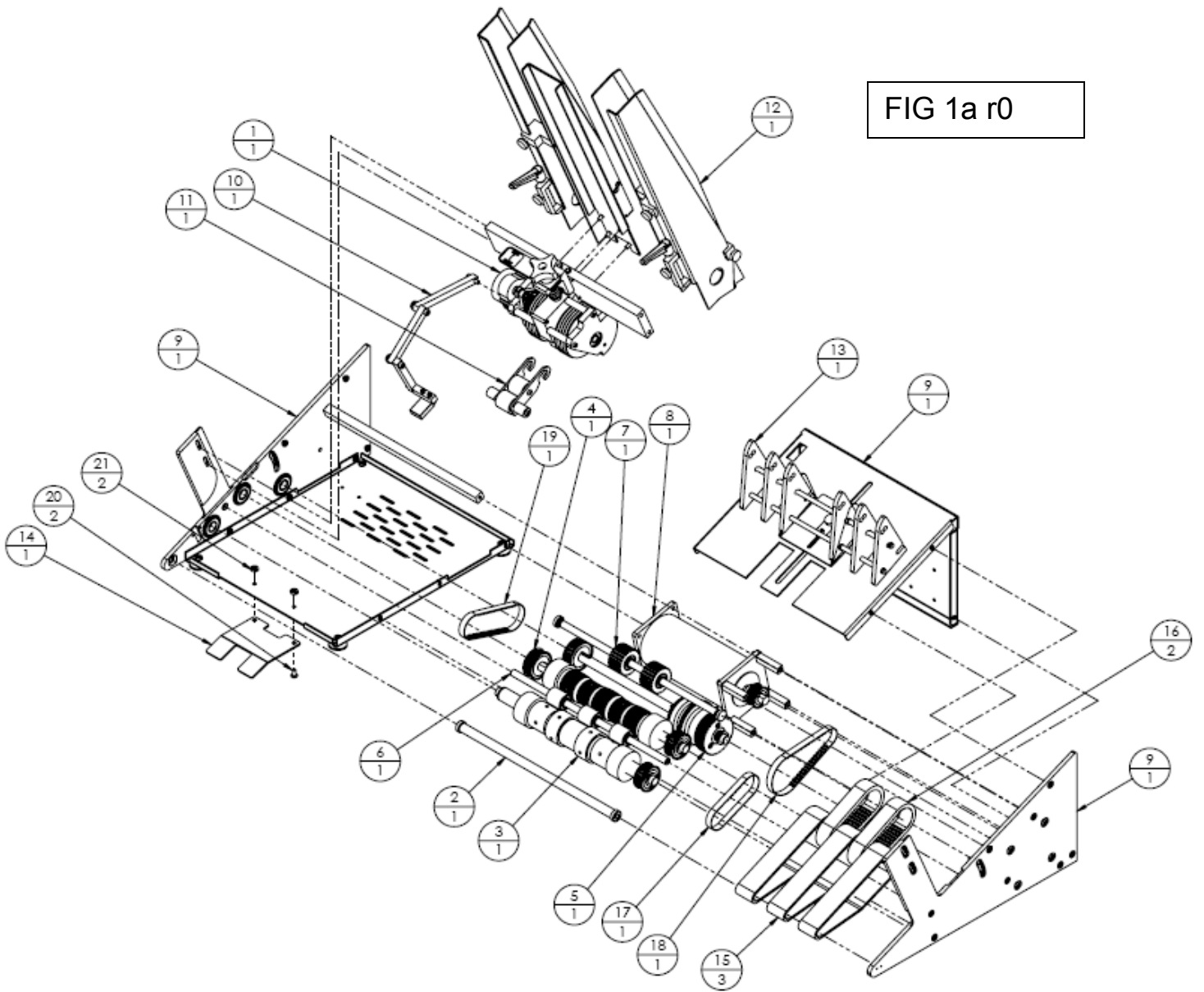


FIG 1 r0

FEEDER WITH SHROUDED SEPARATOR

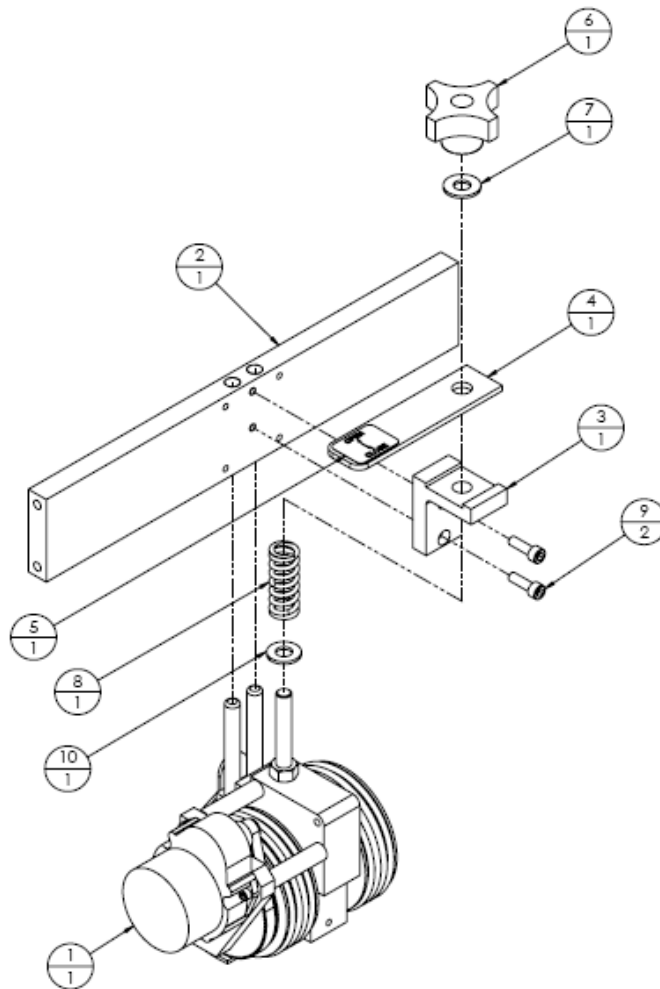


**FEEDER WITH SHROUDLESS SEPARATOR**

**1200 EI FEEDER ASSEMBLY (Fig. 2)  
 110V SEPARATOR W/CROSS BAR (10020-470r0)**

ITEM	PART NO.	QTY.	DESCRIPTION
1	SEE FIG. 2A	REF	ASSEMBLY, SEPARATOR, 110V, CCW (10020-004)
2	10003-003	1	CROSS BAR
3	10007-010	1	BLOCK, SEPARATOR ADJUSTING
4	10008-024	1	BAR, SEPARATOR RELEASE
5	18017-008	1	LABEL, FEEDER SEPARATOR ADJUSTING
6	99004-001	1	KNOB, FEMALE 5/16-24
7	99003-015	1	WASHER, NYLON, 5/16 X 1/16 THK
8	99005-045	1	SPRING, COMPRESSION
9	-	2	SCREW, SKT HD, #10-24 X 5/8
10	-	1	FLAT WASHER, 5/16

NOTE: SEE FIG 2rA FOR SHROUDLESS VERSION



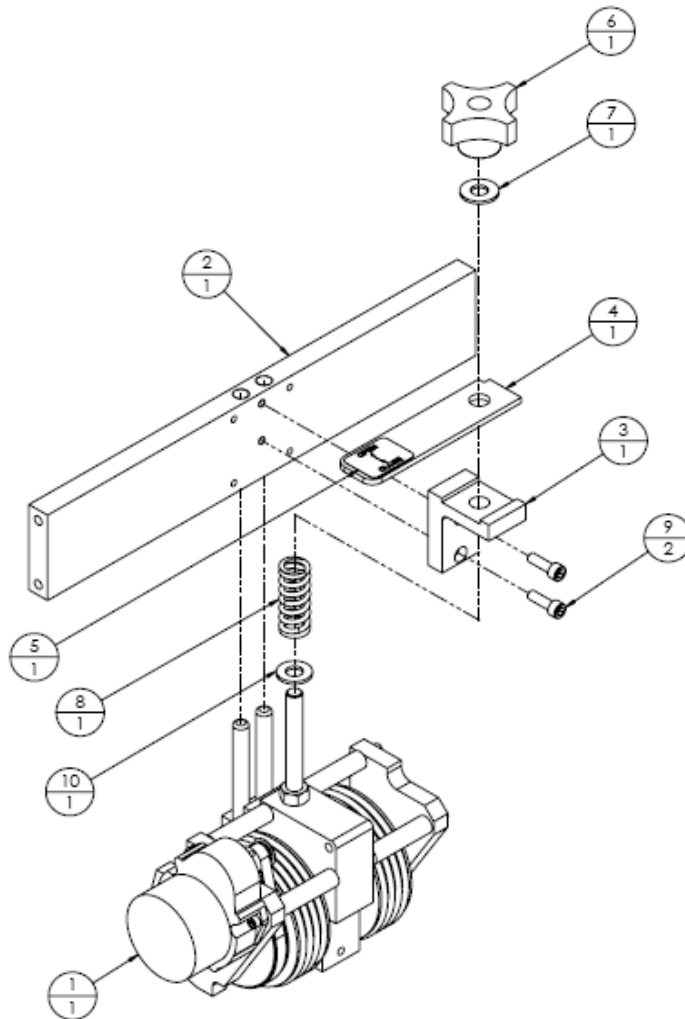


**1200 EI FEEDER ASSEMBLY (Fig. 2rA)  
 110V SEPARATOR W/CROSS BAR (10020-470rA)**

ITEM	PART NO.	QTY.	DESCRIPTION
<sup>b</sup> 1	SEE FIG. 2ArB	REF	ASSY, SEPARATOR, SHROUDLESS 110V, CCW10020-511rA
2	10003-003	1	CROSS BAR
3	10007-010	1	BLOCK, SEPARATOR ADJUSTING
4	10008-024	1	BAR, SEPARATOR RELEASE
5	18017-008	1	LABEL, FEEDER SEPARATOR ADJUSTING
6	99004-001	1	KNOB, FEMALE 5/16-24
7	99003-015	1	WASHER, NYLON, 5/16 X 1/16 THK
8	99005-045	1	SPRING, COMPRESSION
9	-	2	SCREW, SKT HD, #10-24 X 5/8
10	-	1	FLAT WASHER, 5/16

REV A: Item 1 was 10020-004; changed to 10020-511 (5/8/08)

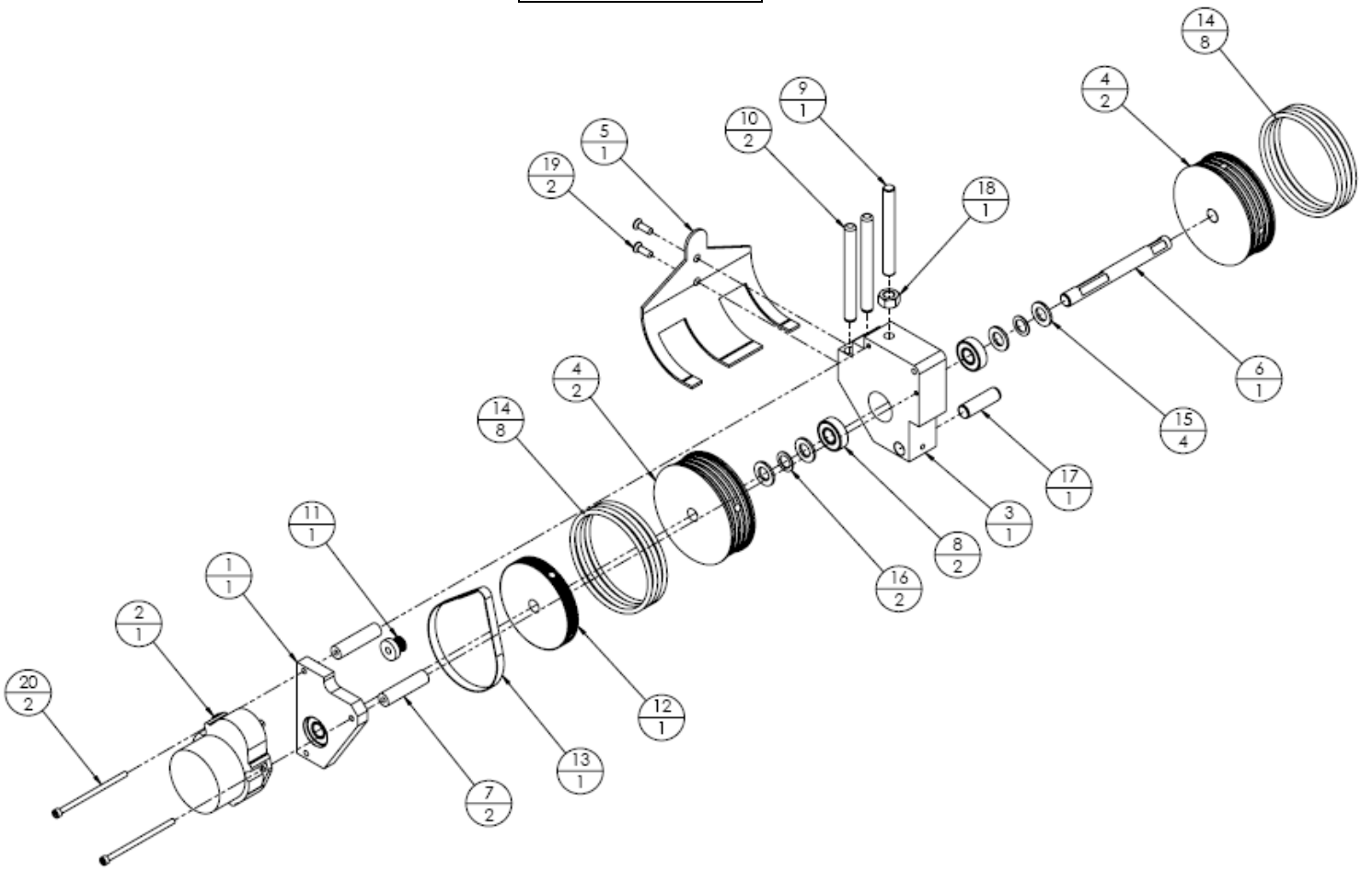
REV B: Item 1 was 10020-511; changed to rev A (9/29/08)



**ASSEMBLY, SEPARATOR, 110V, CCW (10020-004r0) (Fig. 2A)**

ITEM	PART NO.	QTY.	DESCRIPTION
<b>1</b>	<b>10020-313</b>	<b>1</b>	<b>ASSY, MOTOR PLATE MTG, RH</b>
	10011-001	1 EA	PLATE, MOTOR MOUNT
	99003-001	1 EA	BEARING, 3/8 X 7/8, SHIELDED
<b>2</b>	<b>10018-035</b>	<b>1</b>	<b>ASSY, MOTOR SEPARATOR, 110V, CCW, 60 HZ</b>
	99001-001	1 EA	MOTOR, SEPARATOR, 110 VAC, 1/3 RPM
	98020-065	1 EA	CAPACITOR, 0.25 $\mu$ f
	98016-023	1 EA	CONNECTOR, 2-POSITION MALE
3	10007-001	1	BLOCK, SEPARATOR 3" ROLLER
4	10006-001	2	WHEEL, SEPARATOR 3" DIA.
5	10005-003	1	SHROUD, SEPARATOR
6	10004-001	1	SHAFT, SEPARATOR
7	10012-002	2	STANDOFF, SEPARATOR MOTOR
8	99003-001	2	BEARING, 3/8 X 7/8, SHIELDED
9	10004-028	1	STUD, SEPARATOR ADJUSTING
10	99006-002	2	PIN, DOWEL, 5/16 X 3
11	99002-002	1	PULLEY, TIMING, 16MXL025, 3/16B
12	99002-001	1	PULLEY, TIMING, 100MXL025, 3/8B
13	99000-006	1	BELT, TIMING, 115MXL025
14	10014-002	8	O-RING, SEPARATOR 3"
15	99003-017	4	WASHER, NYLON 3/8 X 1/16 THK
16	99003-016	3	WASHER, NYLON 3/8 X 1/32 THK
17	99006-001	1	PIN, DOWEL, 3/8 X 1-1/4
18	-	1	NUT, HEX, 5/16-24
19	-	2	SCREW, FLAT HD, #8-32 X 1/2
20	-	2	SCREW, SKT HD, #6-32 X 2-1/2

FIG 2A r0



FEEDER WITH SHROUDED SEPARATOR

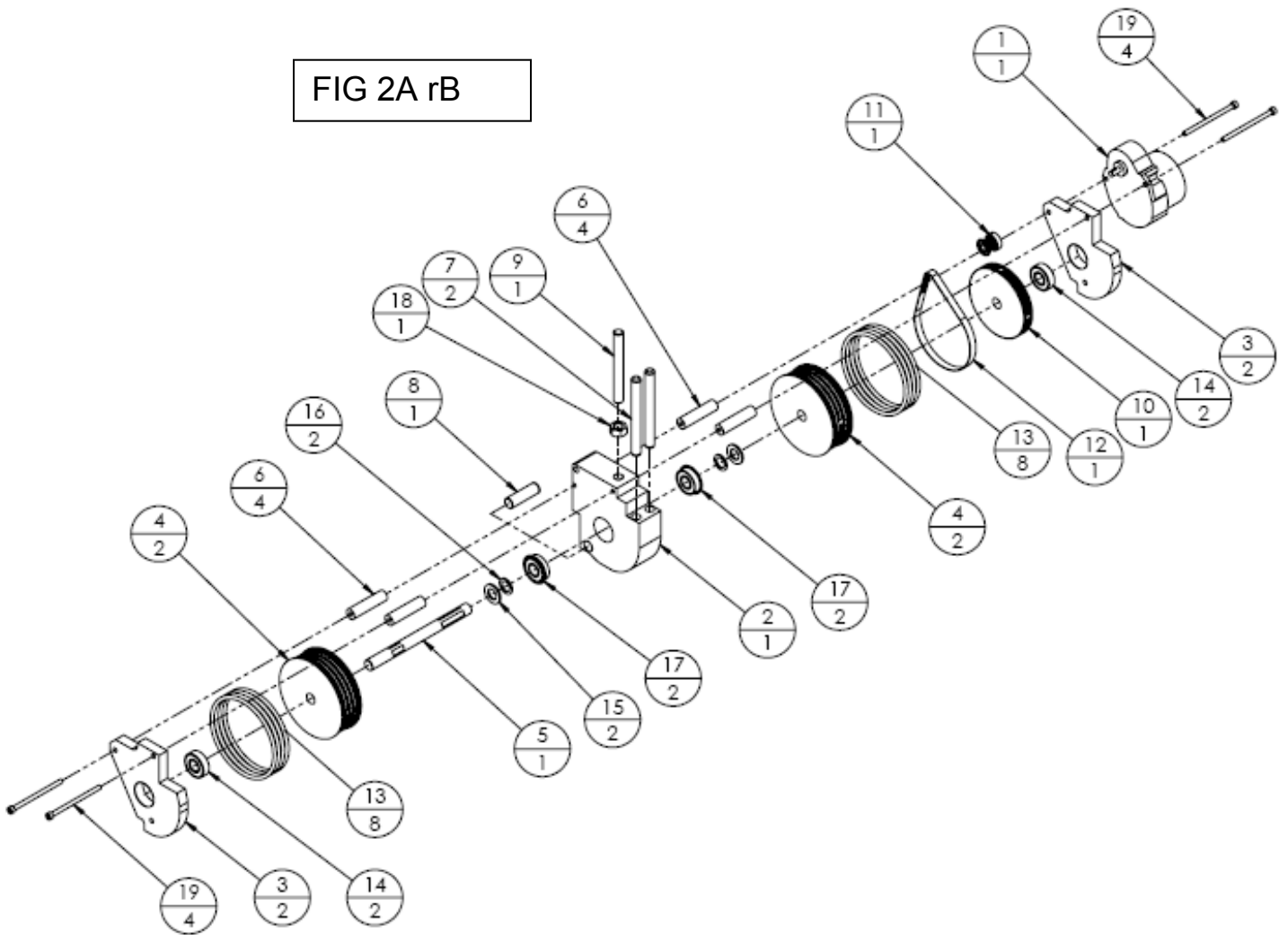
**ASSY, SEPARATOR, SHROUDLESS, 110V, CCW (10020-511rA)<sup>b</sup>**  
**(Fig. 2ArB)<sup>b</sup>**

ITEM	PART NO.	QTY.	DESCRIPTION
1	10018-035	1	ASSY, MOTOR SEPARATOR, 110V, CCW, 60 HZ
	99001-001	1 EA	MOTOR, SEPARATOR, 110 VAC, 1/3 RPM
	98020-065	1 EA	CAPACITOR, 0.25 µf
	98016-023	1 EA	CONNECTOR, 2-POSITION MALE
	98016-057	2	CONTACT, PIN, 24-18 AWG
2	10007-142	1	BLOCK, SEPARATOR (SHROUDLESS)
3	10011-083	2	PLATE, SEPARATOR MOTOR MTG (SHROUDLESS)
4	10006-001	2	WHEEL, SEPARATOR 3" DIA.
5	10004-264	1	SHAFT, SEPARATOR (SHROUDLESS)
6	10012-002	4	STANDOFF, SEPARATOR MOTOR
7	99006-002	2	PIN, DOWEL, 5/16 X 3
8	99006-001	1	PIN, DOWEL, 3/8 X 1-1/4
9	10004-028	1	STUD, SEPARATOR ADJUSTING
10	99002-001	1	PULLEY, TIMING, 100MXL025, 3/8B
11	99002-002	1	PULLEY, TIMING, 16MXL025, 3/16B
12	99000-006	1	BELT, TIMING, 115MXL025
13	10014-002	8	O-RING, SEPARATOR 3"
14	99003-001	2 <sup>b</sup>	BEARING, 3/8 X 7/8, SHIELDED
15	99003-017	2 <sup>b</sup>	WASHER, NYLON 3/8 X 1/16 THK
16	99003-016	2	WASHER, NYLON 3/8 X 1/32 THK
17	99003-020 <sup>b</sup>	2	BEARING, 3/8 X 7/8, SEALED W/ S.R.
18	-	1	NUT, HEX, 5/16-24
19	-	4 <sup>b</sup>	SCREW, SKT HD, #6-32 X 2-1/4

REV A: FIG 2A was changed to 10020-511 (5/8/08)

REV B: Dwg was 10020-511r 0; Figure was FIG 2ArA; Added item 17, changed quantities of items 14, 15 and 19.

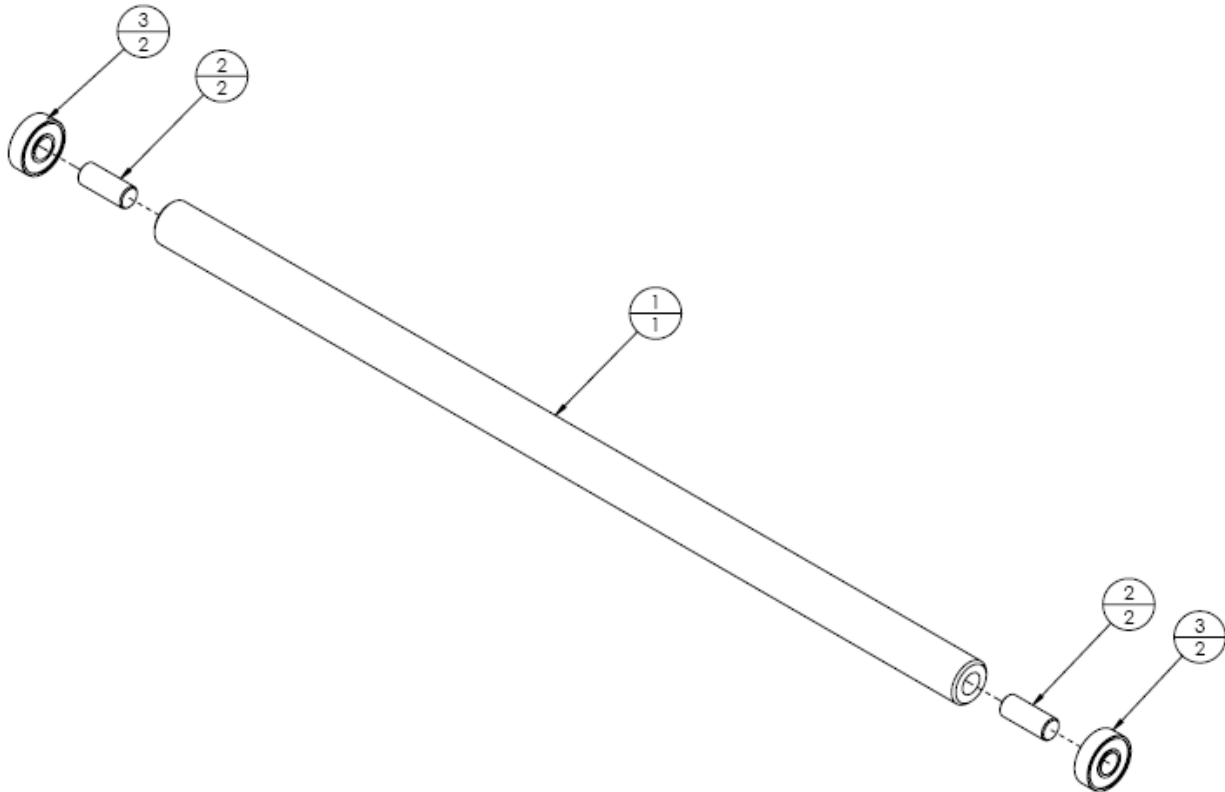
FIG 2A rB



FEEDER WITH SHROUDLESS SEPARATOR

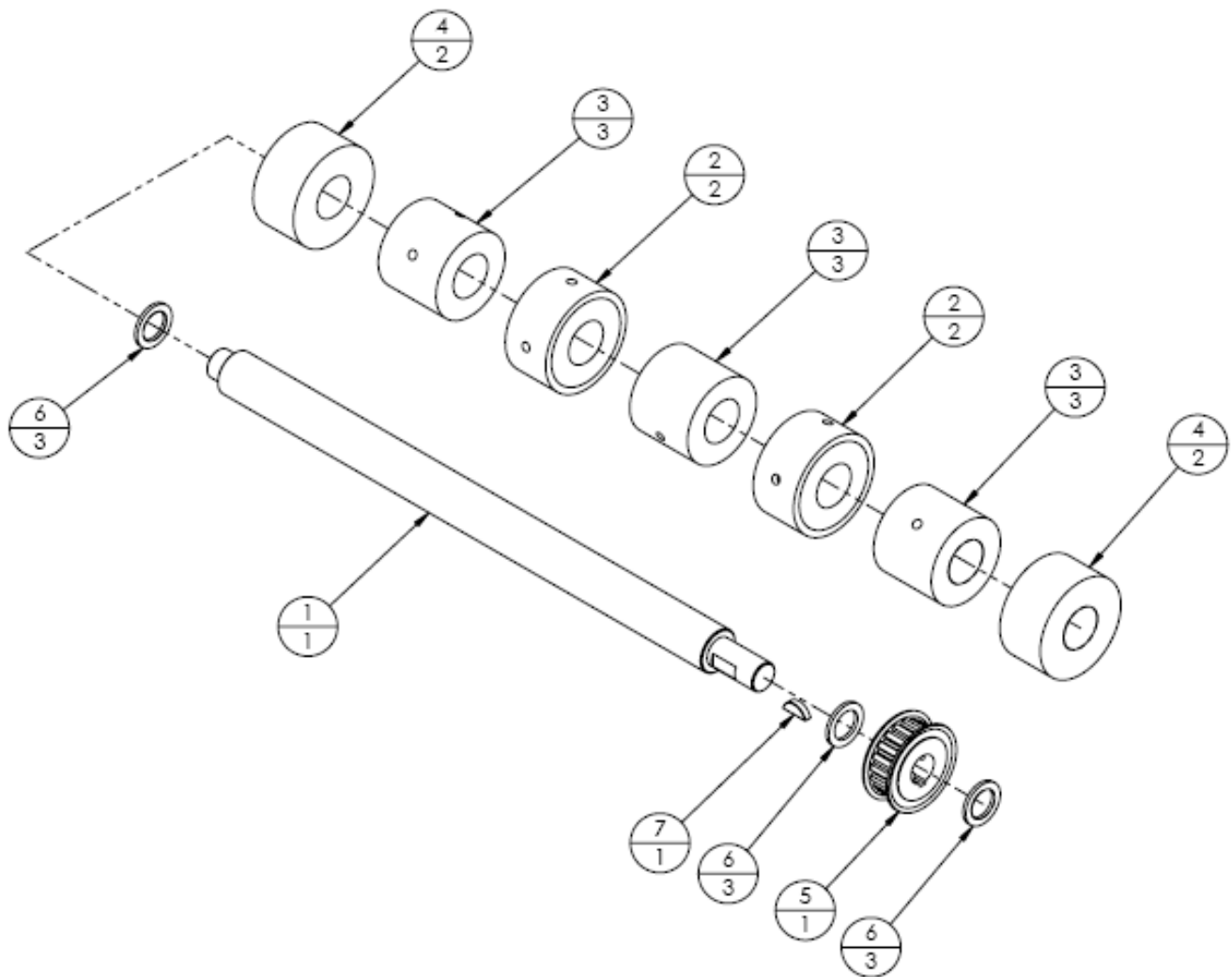
**ASSEMBLY, FRONT SHAFT (10020-022r0) (Fig. 3)**

ITEM	PART NO.	QTY.	DESCRIPTION
1	10004-009	1	SHAFT, FRONT
2	99006-028	2	PIN, DOWEL, 1/4 X 5/8
3	99003-056	2	BEARING, 1/4 X 5/8 SEALED



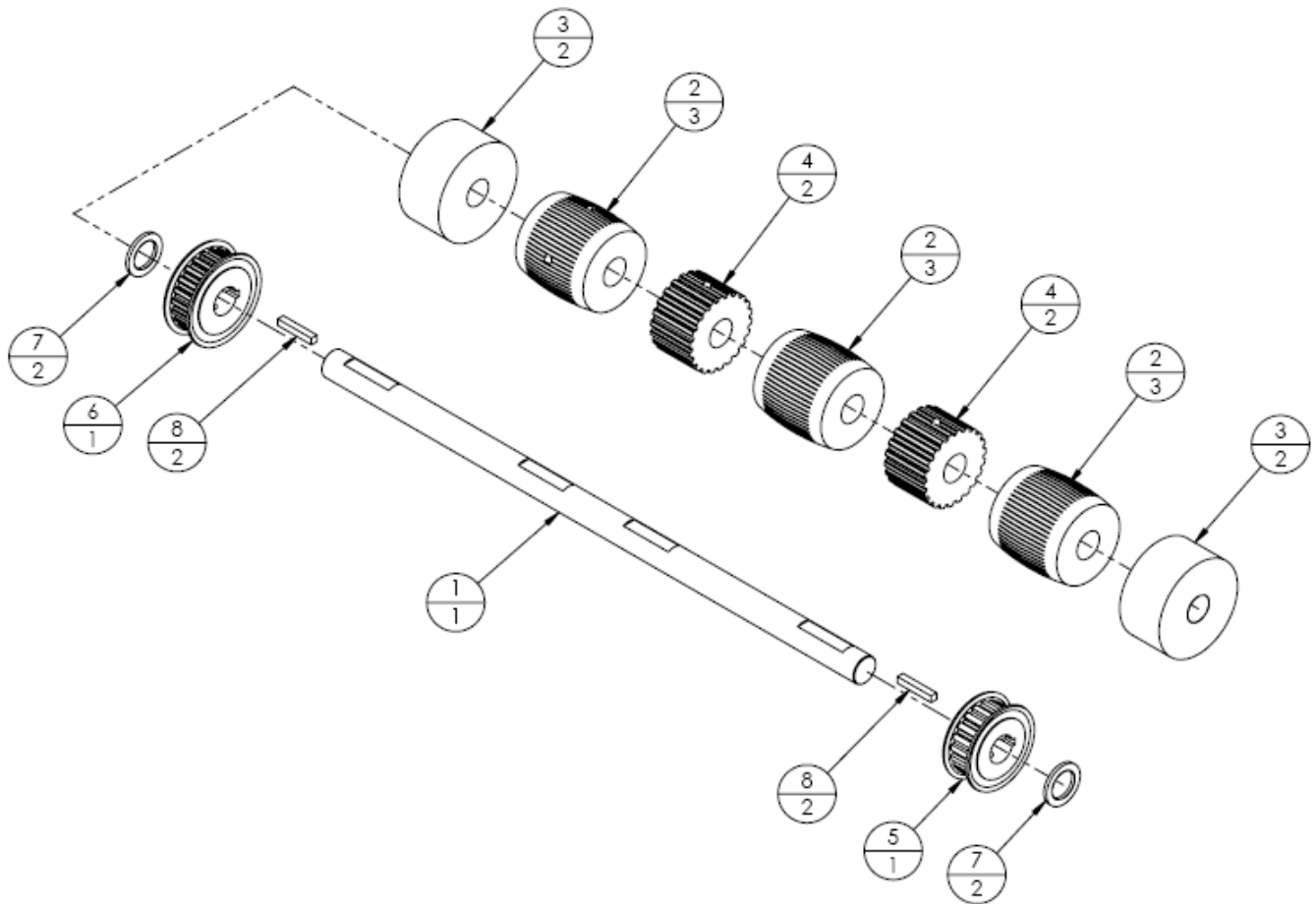
**ASSEMBLY, NIP ROLLER SHAFT (10020-030r0) (Fig. 4)**

ITEM	PART NO.	QTY.	DESCRIPTION
1	10004-123	1	SHAFT, NIP ROLLER-3/4B
2	10006-070	2	ROLLER, NIP, 3/4 B
3	10006-071	3	PULLEY, MATE, 3/4 B
4	10006-069	2	ROLLER, FEEDER, 3/4 B
5	99002-054	1	PULLEY, 20XL037, 1/2B
6	99003-018	3	WASHER, NYLON, 1/2 X 1/16
7	99034-004	1	KEY, WOODRUFF, 1/8 X 1/2



**ASSEMBLY, MAIN SHAFT (10020-045r0) (Fig. 5)**

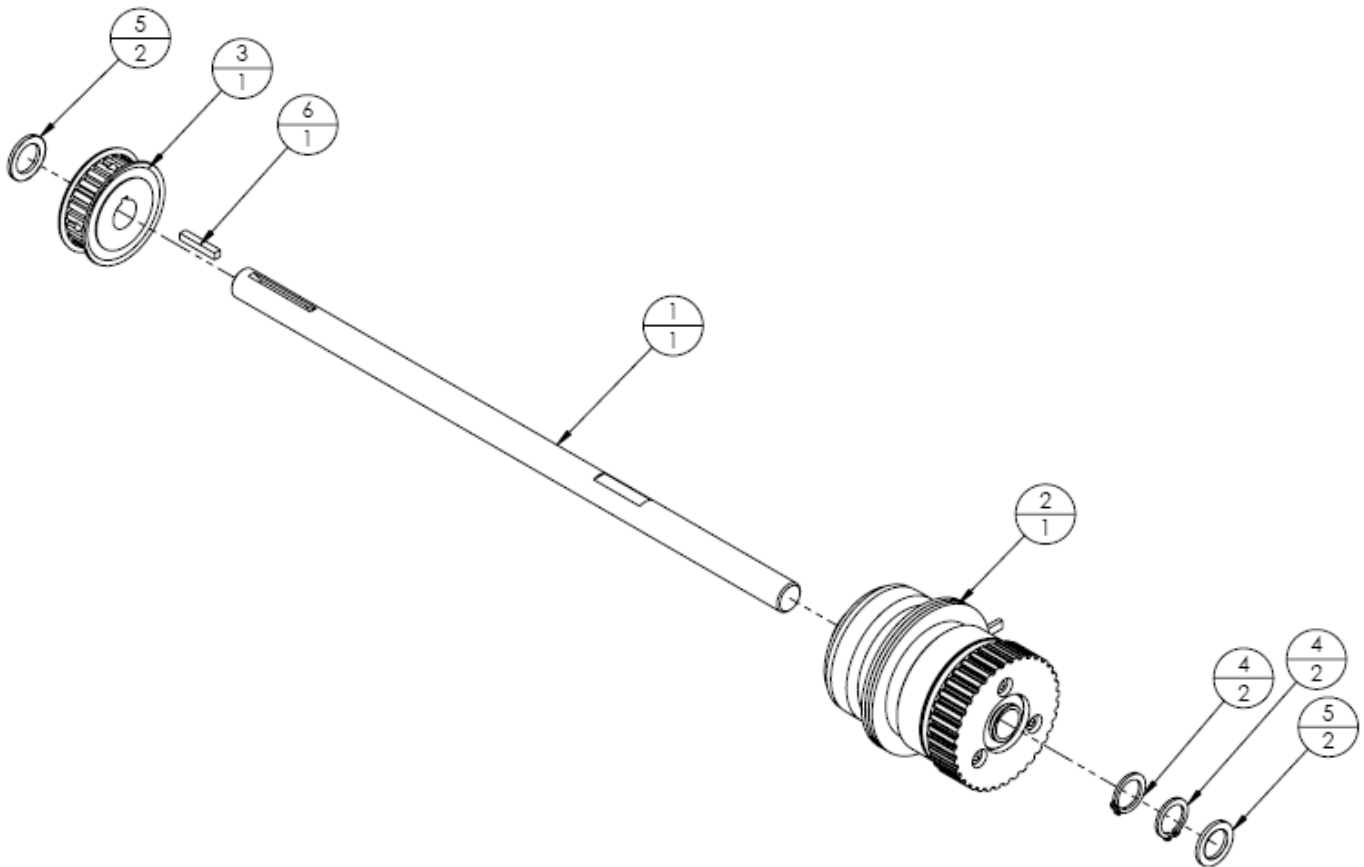
ITEM	PART NO.	QTY.	DESCRIPTION
1	10004-045	1	SHAFT, MAIN DRIVE
2	10006-018	3	PULLEY, CROWNED
3	10006-007	2	ROLLER, FEEDER, 1/2 B
4	10006-021	2	PULLEY, ELEVATOR DRIVE
5	99002-054	1	PULLEY, 20XL037, 1/2B
6	99002-074	1	PULLEY, TIMING, 22XL037, 1/2B W/KEYWAY
7	99003-018	2	WASHER, NYLON, 1/2 X 1/16
8	99034-003	2	KEY, SQUARE, 1/8 X 3/4





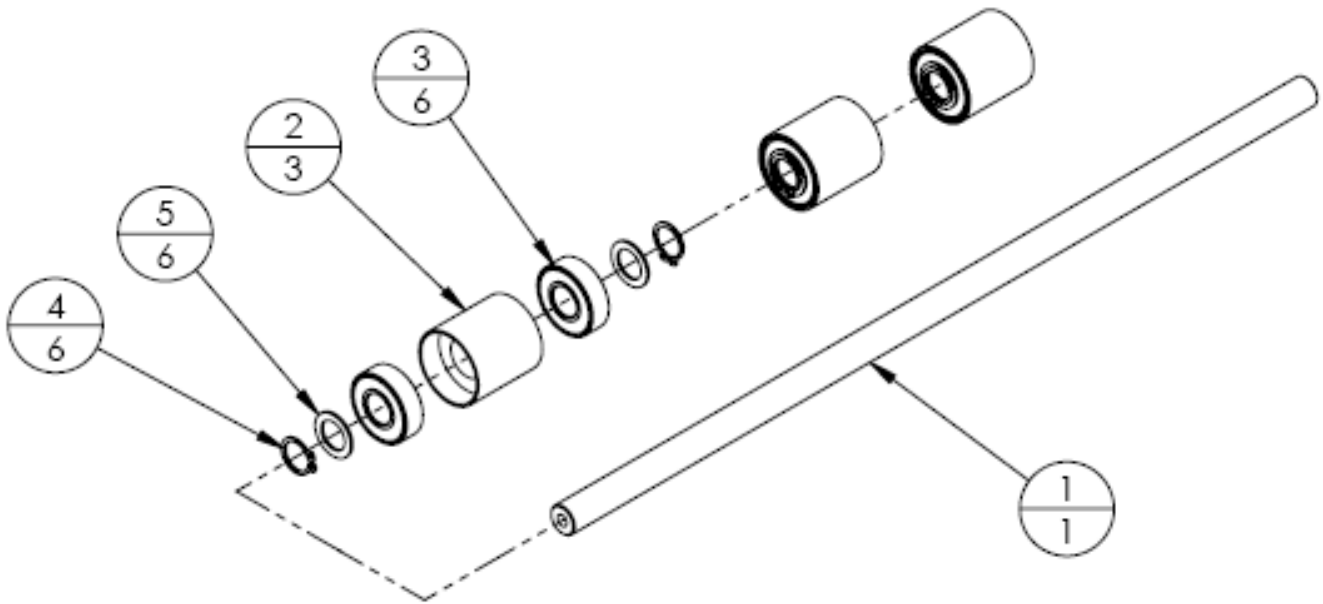
**ASSEMBLY, CLUTCH SHAFT (10020-053r0) (Fig. 6)**

ITEM	PART NO.	QTY.	DESCRIPTION
1	10004-156	1	SHAFT, CLUTCH
2	99008-010	1	CLUTCH, BRAKE, 24V (LENZA)
3	99002-031	1	PULLEY, TIMING, 24XL037, 1/2B
4	99022-004	2	SNAP RING, 1/2
5	99003-018	2	WASHER, NYLON, 1/2 X 1/16
6	99034-003	1	KEY, SQUARE, 1/8 X 3/4



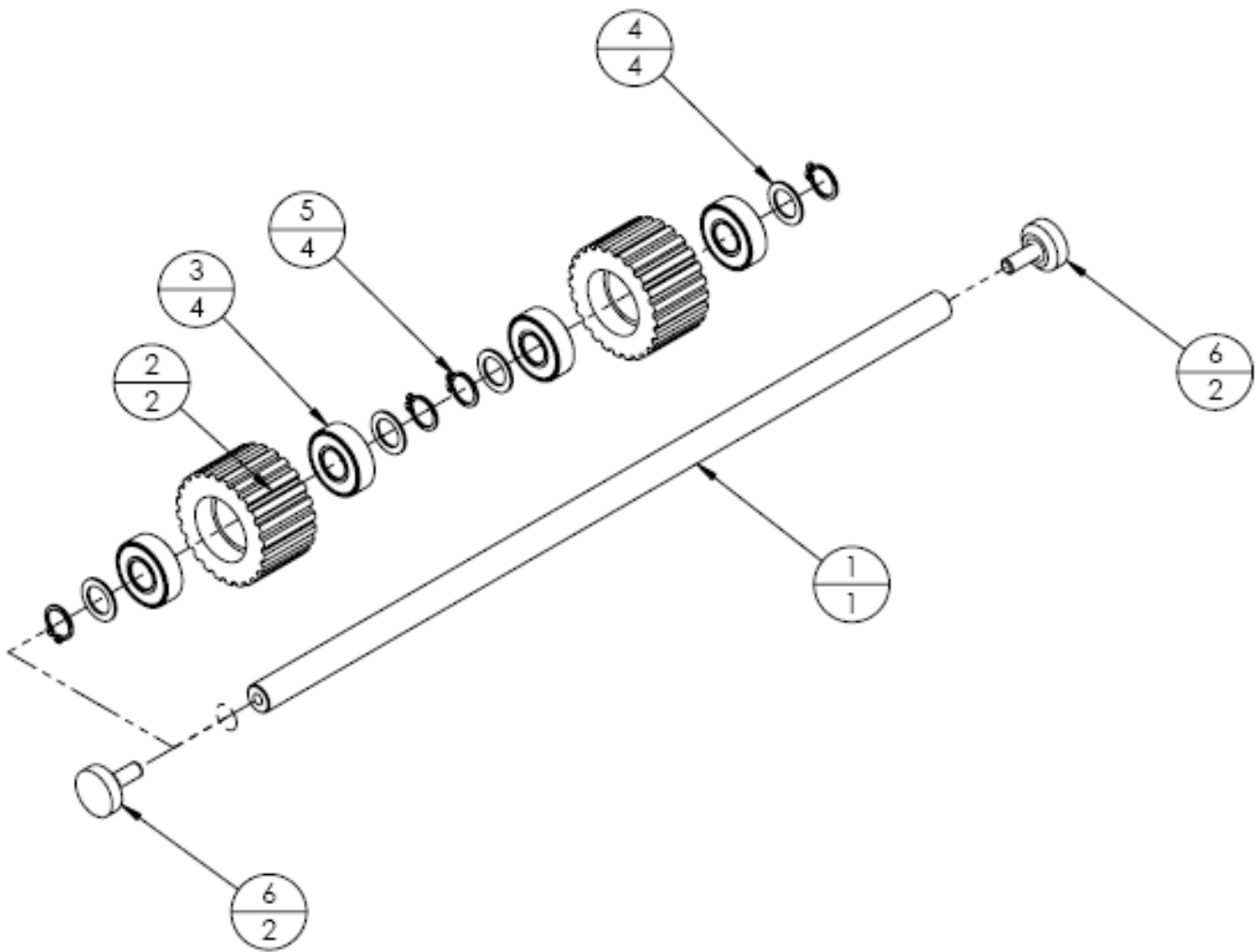
**ASSEMBLY, SUPPORT IDLER SHAFT (10020-037r0) (Fig. 7)**

ITEM	PART NO.	QTY.	DESCRIPTION
1	10004-046	1	SHAFT, SUPPORT IDLER
2	10006-012	3	ROLLER, IDLER
3	99003-001	6	BEARING, SEALED, 3/8 X 7/8
4	99022-003	6	SNAP RING, 3/8
5	99003-016	6	WASHER, NYLON, 3/8 X 1/32



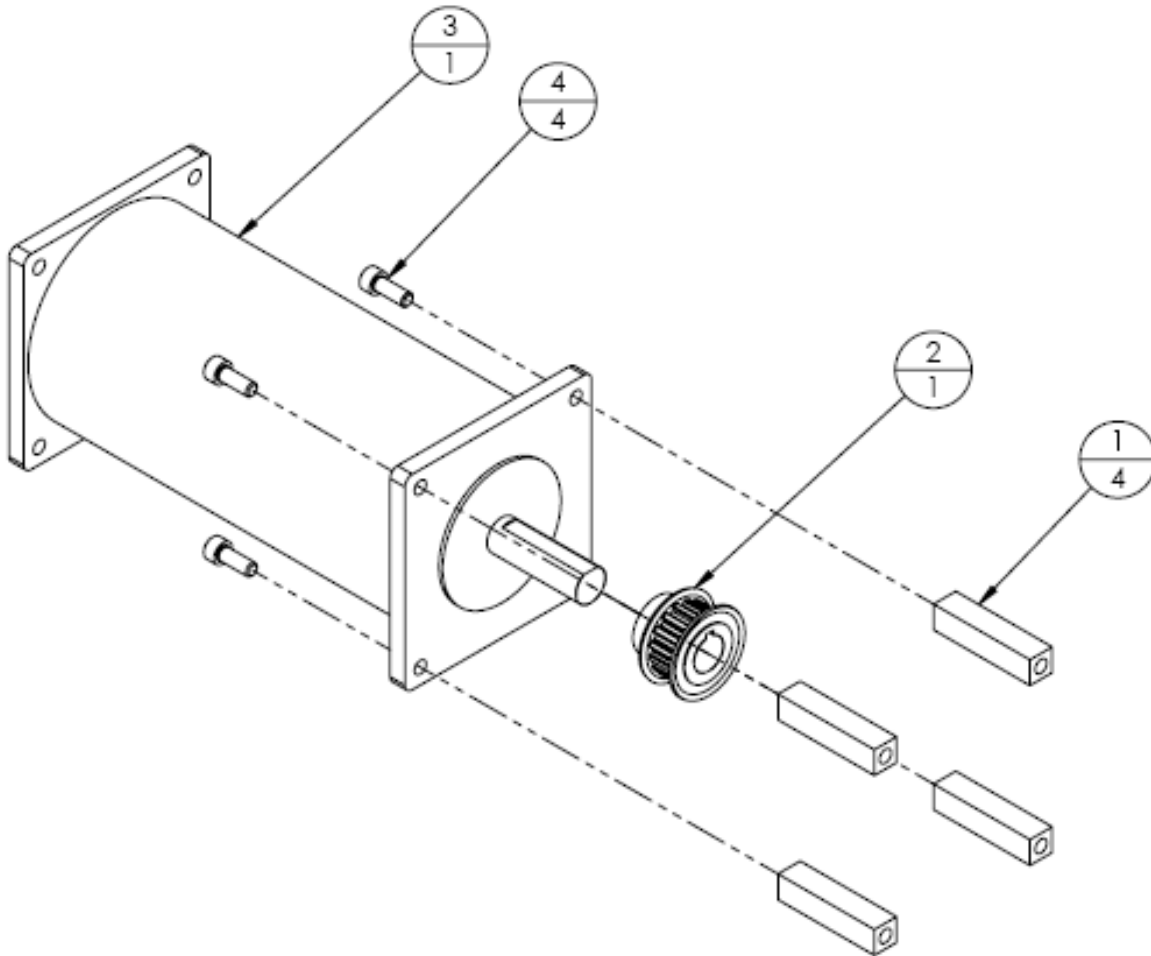
**ASSEMBLY, ELEVATOR SHAFT (10020-057r0) (Fig. 8)**

ITEM	PART NO.	QTY.	DESCRIPTION
1	10004-046	1	SHAFT, SUPPORT IDLER
2	10006-022	2	PULLEY, ELEVATOR IDLER
3	99003-001	4	BEARING, SEALED, 3/8 X 7/8
4	99003-016	4	WASHER, NYLON, 3/8 X 1/32
5	99022-003	4	SNAP RING, 3/8
6	10020-317	2	ASSY, KNOB, #10-24 X 1/2



**ASSEMBLY, MOTOR (10020-061r0) (Fig. 9)**

ITEM	PART NO.	QTY.	DESCRIPTION
1	10012-004	4	STANDOFF, MOTOR
2	99002-007	1	PULLEY, TIMING, 16XL037-1/2B
3	99001-002	1	MOTOR, 1/8 HP, 4Z140
4	-	4	SCREW, SKT HD, #10-24 X 1/2
N/S	98016-021	1	CONNECTOR, 5-POS FEMALE (.093)
N/S	98016-057	2	CONTACT PIN, 18-24 AWG
N/S	98010-092	0.5 FT	WIRE, 16 AWG, GREEN/YELLOW

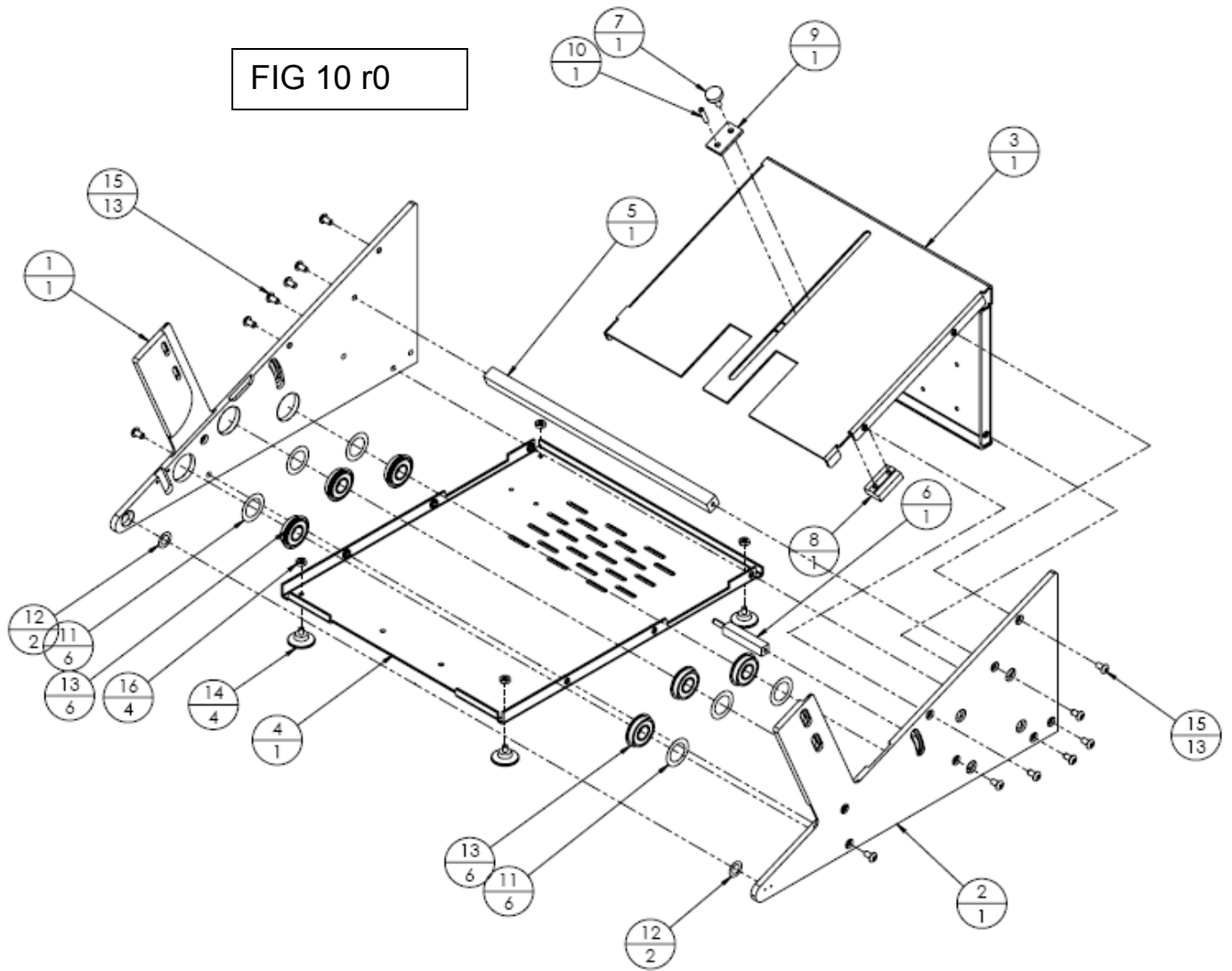


**ASSEMBLY, CHASSIS (10020-070rA) (Fig. 10)**

ITEM	PART NO.	QTY.	DESCRIPTION
1	10000-006	1	SIDE FRAME, RH
2	10000-005	1	SIDE FRAME, LH
3	10001-060 <sup>b</sup>	1	COVER, TOP
4	10002-003	1	BOTTOM COVER
5	10008-003	2	CROSS BRACE
<b>6</b>	<b>10020-447</b>	<b>1</b>	<b>ASSY, CLUTCH STOP</b>
-	10008-006	1 EA	CLUTCH STOP
-	99006-021	1 EA	PIN, ROLL, 3/16 X 1-1/4
7	10020-317	1	ASSY, KNOB, #10-24 X 1/2
8	10007-003	1	NUT, PAPER SLIDE
9	10007-004	1	WASHER, PAPER SLIDE
10	99006-020	1	PIN, ROLL, 5/32 X 3/4
11	99036-003	6	SHIM, BEARING, 3/4 X 1-1/8 X .006
12	99036-005	2	SHIM, ARBOR, 3/8 X 5/8 X .006
13	99003-083	6	BEARING, 1/2 X 1-1/8 SEALED
14	99007-001	4	FOOT, SUCTION, #8-32
15	-	13	SCREW, BUTTON HD, #10-24 X 3/8
16	-	4	HEX NUT, #6-32

REV B: Dwg was rev 0; Item 3 was 10001-005 (9/29/08)

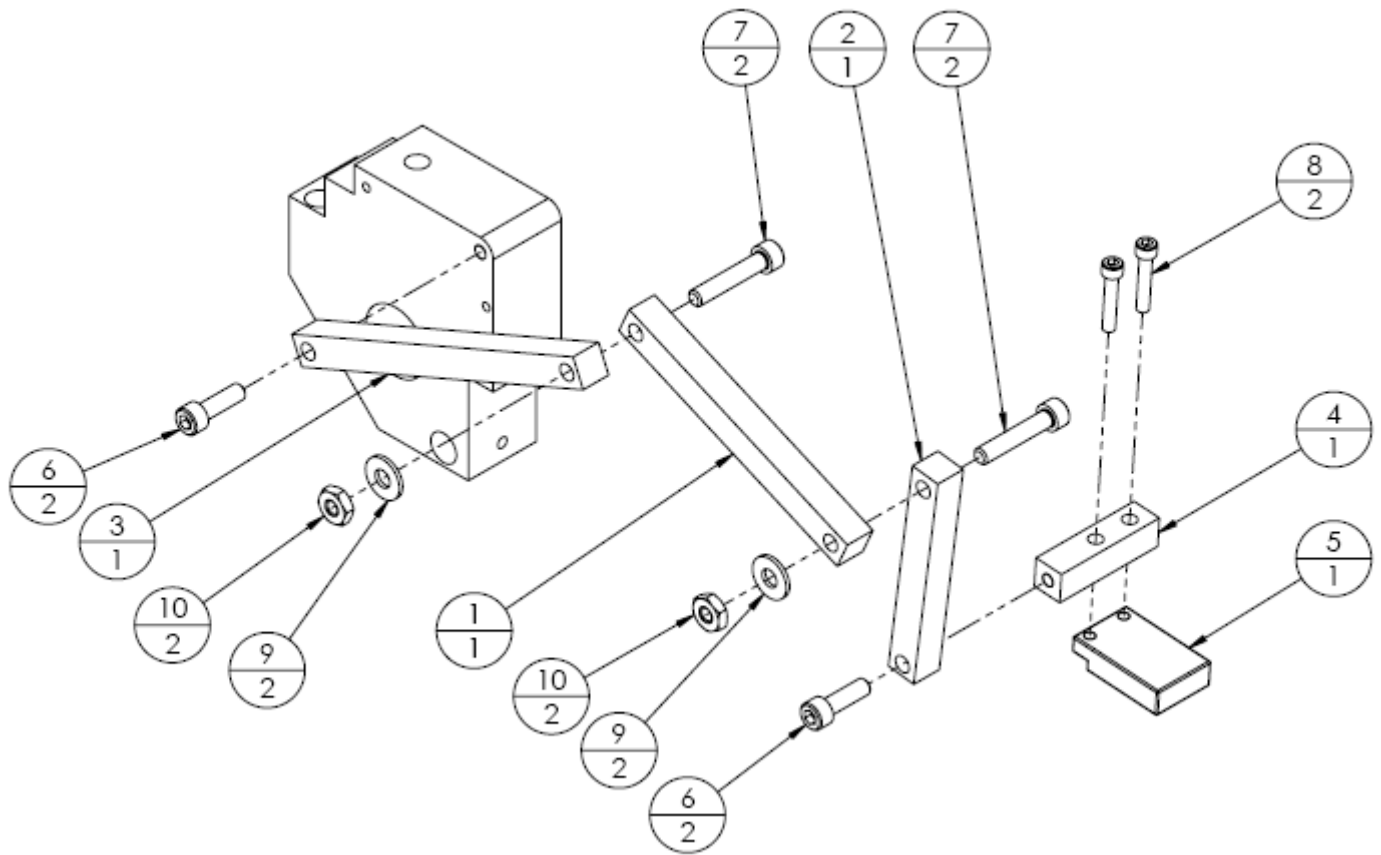
FIG 10 r0



**ASSEMBLY, SENSOR ARM (10020-007r0) (Fig. 11)**

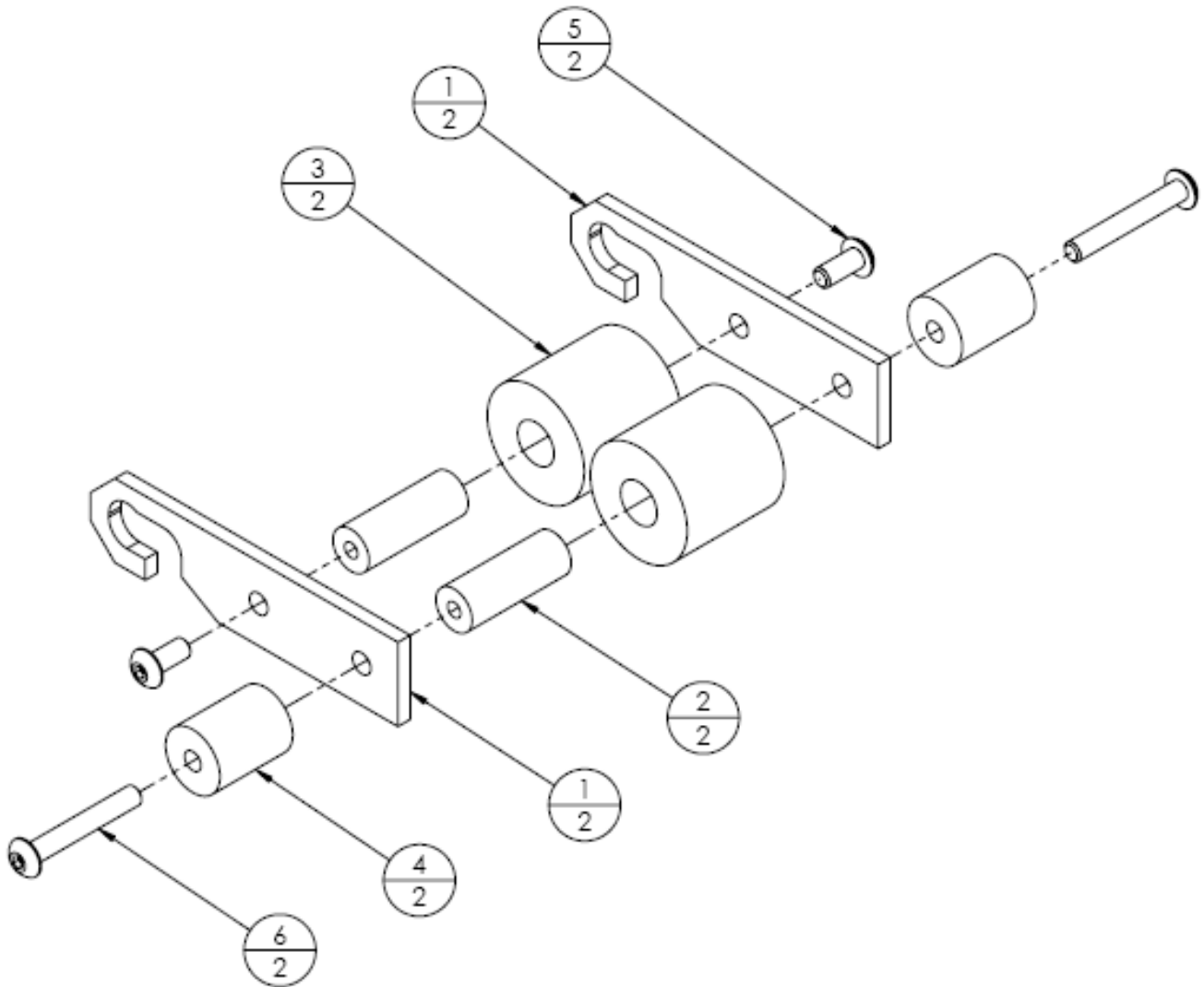
ITEM	PART NO.	QTY.	DESCRIPTION
1	10009-011	1	ARM, SENSOR
2	10009-007	1	ARM, SENSOR
3	10009-008	1	ARM, SENSOR
4	10009-006	1	MOUNT, SENSOR
5	98009-001	1	SENSOR, DIFFUSE RELECTIVE
6	-	2	SCREW, SKT HEAD, #10-24 X 5/8
7	-	2	SCREW, SKT HEAD, #10-24 X 1
8	-	2	SCREW, SKT HEAD, #6-32 X 3/4
9	-	2	FLAT WASHER #10
10	-	2	HEX NUT, #10
N/S	98016-116	1	CONNECTOR, RECEPTACLE, 3 POS
N/S	98016-056	3	CONTACT, SOCKET

NOTE: Actual assembly is mirrored to opposite hand and mounted on other side of block.



**ASSEMBLY, TRAILING ARM (10020-072r0) (Fig. 12)**

ITEM	PART NO.	QTY.	DESCRIPTION
1	10011-002	2	PLATE, ROLLER MTG
2	10012-003	2	SPACER, TONGUE
3	10006-016	2	ROLLER, TONGUE
4	10004-016	2	WEIGHT
5	-	1	SCREW, BUTTON HEAD, #8-32 X 3/8
6	-	1	SCREW, BUTTON HEAD, #8-32 X 1-1/8

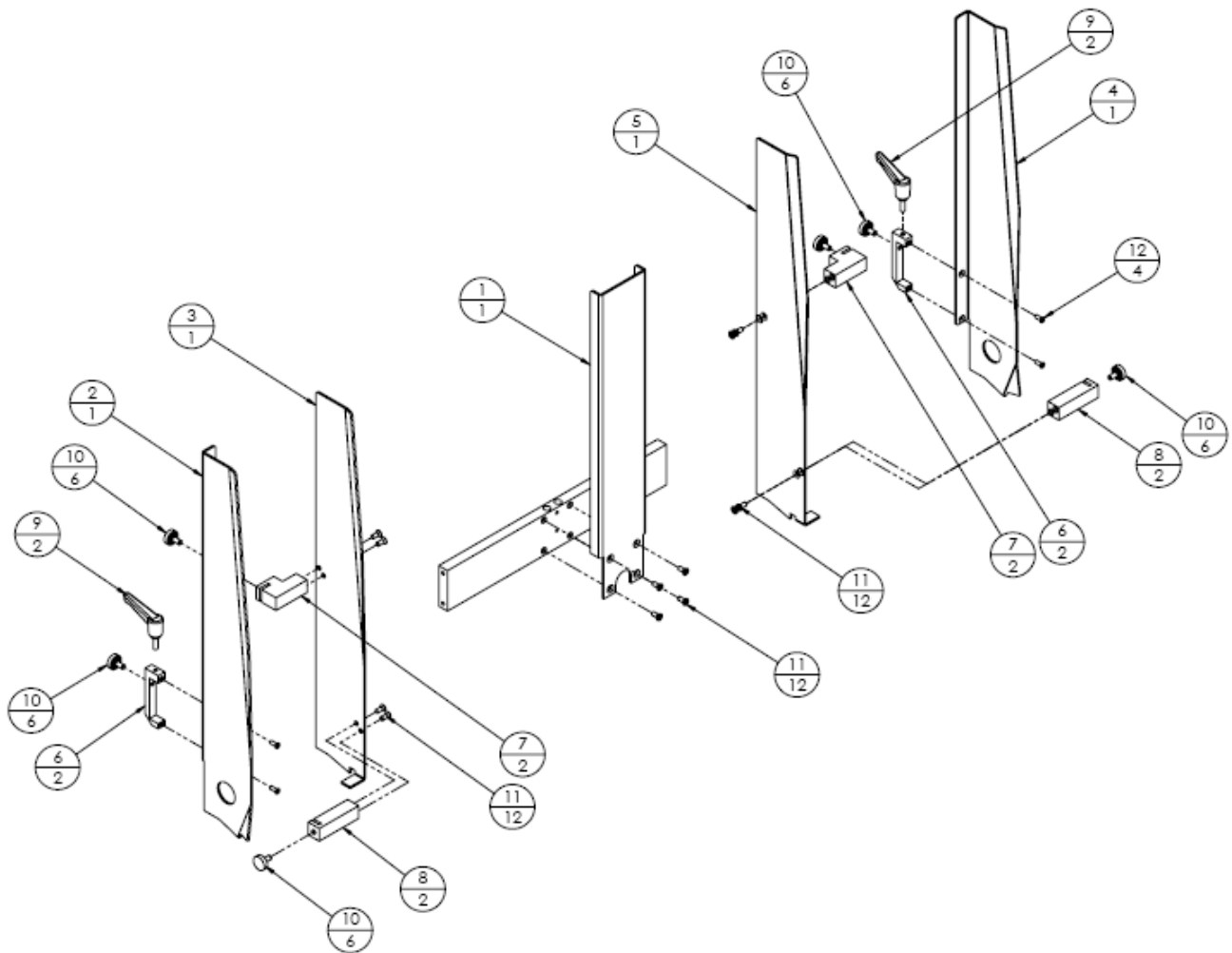




**ASSEMBLY, SIDE GUIDES (10020-010r0) (Fig. 13)**

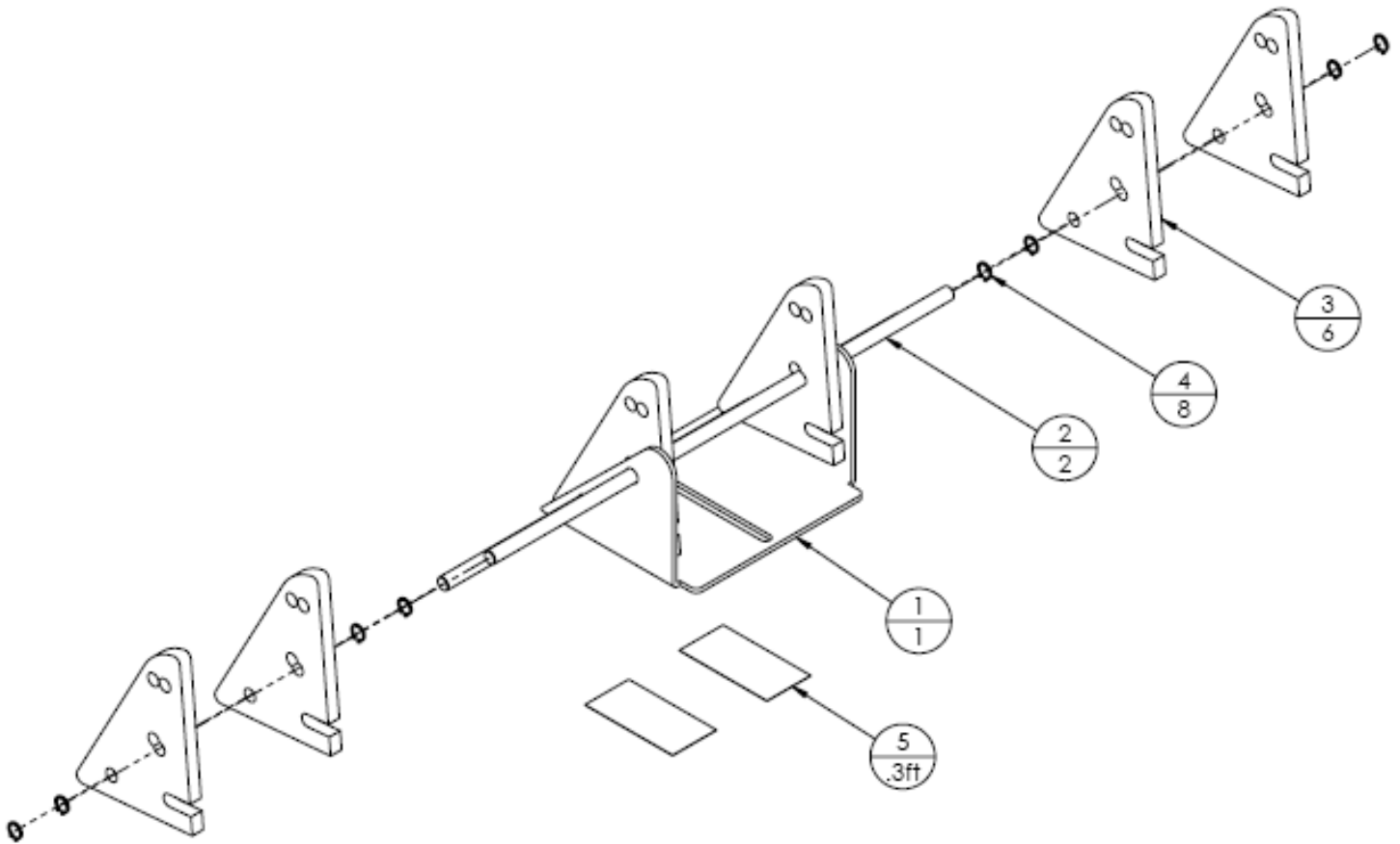
ITEM	PART NO.	QTY.	DESCRIPTION
1	10005-200 <sup>a</sup>	1	GUIDE, FRONT PAPER
2	10005-008	1	SIDE GUIDE, LH
3	10005-015	1	GUIDE BUSINESS, LH TALL
4	10005-009	1	SIDE GUIDE, RH
5	10005-014	1	GUIDE BUSINESS, RH TALL
6	10009-002	2	BRACKET, SIDE GUIDE MTG
7	10007-007	2	CLAMP, BUSINESS GUIDE, UPPER
8	10007-008	2	CLAMP, BUSINESS GUIDE
9	99004-003	2	HANDLE, RATCHET, #10-24 X 5/8
10	10020-316	6	ASSY, KNOB, #10-24 X 3/8
11	-	12	SCREW, FLAT HD, #8-32 X 3/8
12	-	4	SCREW, FLAT HD, #6-32 X 3/8

REV A: Item 1 was changed from 10005-002 to 10005-200 (5/12/08)



**ASSEMBLY, PAPER SLIDE (10020-058r0) (FIG. 14)**

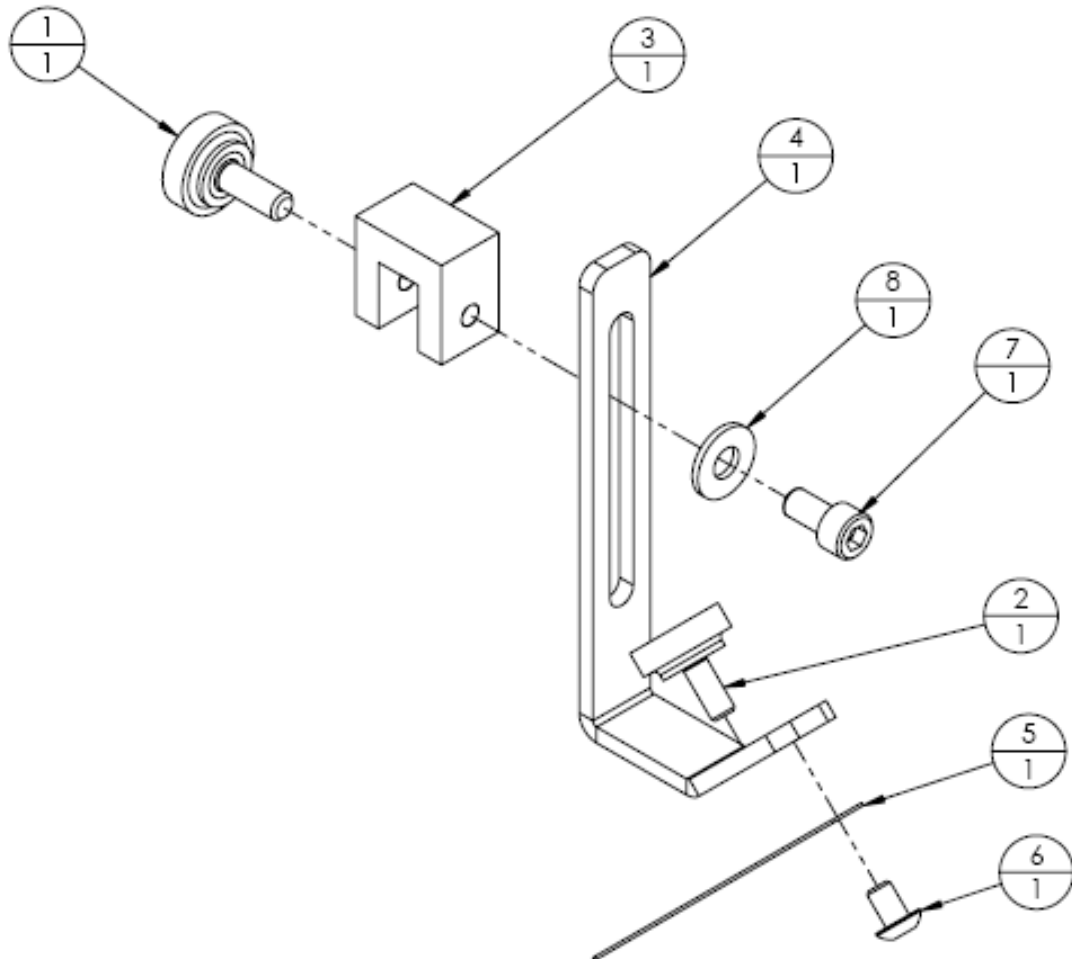
ITEM	PART NO.	QTY.	DESCRIPTION
1	10009-003	1	BRACKET, PAPER SLIDE
2	10004-006	2	SHAFT, PAPER SLIDE
3	10005-016	6	SLIDE, PAPER
4	99022-001	8	SNAP RING, 1/4"
5	99039-009	0.3 FT	ANTI-SKID TAPE, BLACK



**ASSEMBLY, PAPER KNOCKDOWN (10017-001r0) (FIG. 15)**

ITEM	PART NO.	QTY.	DESCRIPTION
1	10020-317	1	ASSY, KNOB, #10-24 X 1/2
2	10020-318	1	ASSY, KNOB, #8-32 X 3/8
3	10007-019	1	BLOCK, KNOCKDOWN
4	10009-021	1	BRACKET, KNOCKDOWN
5	10005-040	1	GUIDE, SPRING STEEL
6	-	1	SCREW, BUTTON HD, #8-32 X 1/4
7	-	1	SCREW, SKT HD, #10-24 X 3/8
8	-	1	FLAT WASHER, #10

QTY (2) REQUIRED PER FEEDER-TO BE MOUNTED ON CUSTOMER EQUIPMENT



**ASSEMBLY, ELECTRICAL (10018-013) (FIG. 16)**

<b>ITEM</b>	<b>PART NO.</b>	<b>QTY.</b>	<b>DESCRIPTION</b>
1	98000-001	1	SWITCH, ROCKER - RED - ILLUM
2	98001-002	1	TERMINAL STRIP 12 CONN. (FEED
3	98004-032	1	CIRCUIT BREAKER 3 AMP (FEEDER)
4	98005-001	1	CONTROLLER, MOTOR 90V DC
5	98003-001	1	RECEPTACLE, POWER CORD
6	98006-021 <sup>a</sup>	1	KNOB, SPEED POT (old # 99004-015)
7	98007-005	1	CORD, POWER, STRAIGHT
8	98023-001	1	I/O BOARD EI SERIES
9	98008-001	1	TRANSFORMER (120V)
10	98006-004	1	DIAL, SPEED POT (KB)
11	98006-037	1	SPEED POT, 1MEGΩ
12	98016-116	1	CONNECTOR, 3- POS FEMALE (.093)
13	98016-021	1	CONNECTOR, 5- POS FEMALE (.093)
14	98016-024	2	CONNECTOR, 2-POS FEMALE (.093)
15	98016-056	12	CONTACT, SOCKET, 24-18 AWG

REV A: Item 6 was changed from 99004-015 to 98006-021 (5/12/08)